



Customer information packet

CUHM3542

.75HP, 1735RPM, 3PH, 60HZ, 56C, 3514M, TEFC, F3

Class - None

Division - Not Applicable

Specifications

Enclosure	TEFC
Frame	56C
Frame Material	Steel
Frequency	60.00 Hz
Motor Letter Type	Three Phase
Output @ Frequency	.750 HP @ 60 HZ
Phase	3
Synchronous Speed @ Frequency	1800 RPM @ 60 HZ
Voltage @ Frequency	460.0 V @ 60 HZ 230.0 V @ 60 HZ
XP Class and Group	None
XP Division	Not Applicable
Agency Approvals	CE CSA UR
Ambient Temperature	40 °C
Auxillary Box	No Auxillary Box
Auxillary Box Lead Termination	None
Base Indicator	Rigid
Bearing Grease Type	Polyrex EM (-20F +300F)
Blower	None
Current @ Voltage	2.400 A @ 230.0 V 2.500 A @ 208.0 V 1.200 A @ 460.0 V
Design Code	B
Drip Cover	No Drip Cover
Duty Rating	CONT
Efficiency @ 100% Load	77.0 %
Electrically Isolated Bearing	Not Electrically Isolated
Feedback Device	NO FEEDBACK
Front Face Code	Standard
Front Shaft Indicator	None

Part detail

Revision	P
Type	AC
Mech. spec.	35X046
Base	
Status	PRD/A
Elec. spec.	35WGN906
Layout	35LYX046
Eff. date	12-02-2020
CD Diagram	CD0005
Poles	04
Leads	9#18
Proprietary	False
Created date	04-30-2013

Heater Indicator	No Heater
High Voltage Full Load Amps	1.2 a
Insulation Class	F
Inverter Code	Not Inverter
KVA Code	K
Lifting Lugs	No Lifting Lugs
Locked Bearing Indicator	Locked Bearing
Motor Lead Exit	Ko Box
Motor Lead Quantity/Wire Size	9 @ 18 AWG
Motor Lead Termination	Flying Leads
Motor Standards	NEMA
Motor Type	3514M
Mounting Arrangement	F3
Number of Poles	4
Overall Length	12.23 IN
Power Factor	75
Product Family	General Purpose
Pulley End Bearing Type	Ball
Pulley Face Code	C-Face
Pulley Shaft Indicator	Standard
Rodent Screen	None
RoHS Status	ROHS COMPLIANT
Service Factor	1.15
Shaft Diameter	0.875 IN
Shaft Extension Location	Pulley End
Shaft Ground Indicator	No Shaft Grounding
Shaft Rotation	Reversible
Shaft Slinger Indicator	No Slinger
Speed	1735 rpm
Speed Code	Single Speed
Starting Method	Direct on line
Thermal Device - Bearing	None
Thermal Device - Winding	None
Vibration Sensor Indicator	No Vibration Sensor

Winding Thermal 1

None

Winding Thermal 2

None

Nameplate

NP1372L										
CAT.NO.	CUHM3542									
SPEC.	35X046N906G1									
HP	.75/.56KW IP44 IC411									
VOLTS	230/460 15KG									
AMP	2.4/1.2									
RPM	1735 1/MIN									
FRAME	56C		HZ	60		PH	3			
SER.F.	1.15	CODE	K	DES	B	CL	F			
NEMA-NOM-EFF	77	PF	75							
RATING	40C AMB-CONT									
CC		USABLE AT 208V						2.5		
DE	6205	ODE	6203							
ENCL	TEFC	SN								
	IE2-76.7(75%)72.5(50%)									

AC Induction Motor Performance Data

Record # 57229

Typical performance - not guaranteed values

Winding: 35WGN906-R002		Type: 3514M		Enclosure: TEFC	
Nameplate Data			460 V, 60 Hz: High Voltage Connection		
Rated Output (HP)	.75	Full Load Torque	2.27 LB-FT		
Volts	230/460	Start Configuration	direct on line		
Full Load Amps	2.4/1.2	Breakdown Torque	8.76 LB-FT		
R.P.M.	1735	Pull-up Torque	5.17 LB-FT		
Hz	60 Phase	3	Locked-rotor Torque	5.75 LB-FT	
NEMA Design Code	B KVA Code	K	Starting Current	8.22 A	
Service Factor (S.F.)		1.15	No-load Current	0.806 A	
NEMA Nom. Eff.	77 Power Factor	75	Line-line Res. @ 25°C	28.2 Ω	
Rating - Duty	40C AMB-CONT		Temp. Rise @ Rated Load	37°C	
S.F. Amps			Temp. Rise @ S.F. Load	43°C	
			Locked-rotor Power Factor	70.6	
			Rotor inertia	0.0827 LB-FT ²	

Load Characteristics 460 V, 60 Hz, 0.75 HP

% of Rated Load	25	50	75	100	125	150	S.F.
Power Factor	35	54	67	77	83	87	80
Efficiency	60.3	72.5	76.7	78.4	77.8	76.4	77.7
Speed	1787	1772	1759	1740	1723	1705	1728
Line amperes	0.828	0.906	1.01	1.17	1.36	1.57	1.3

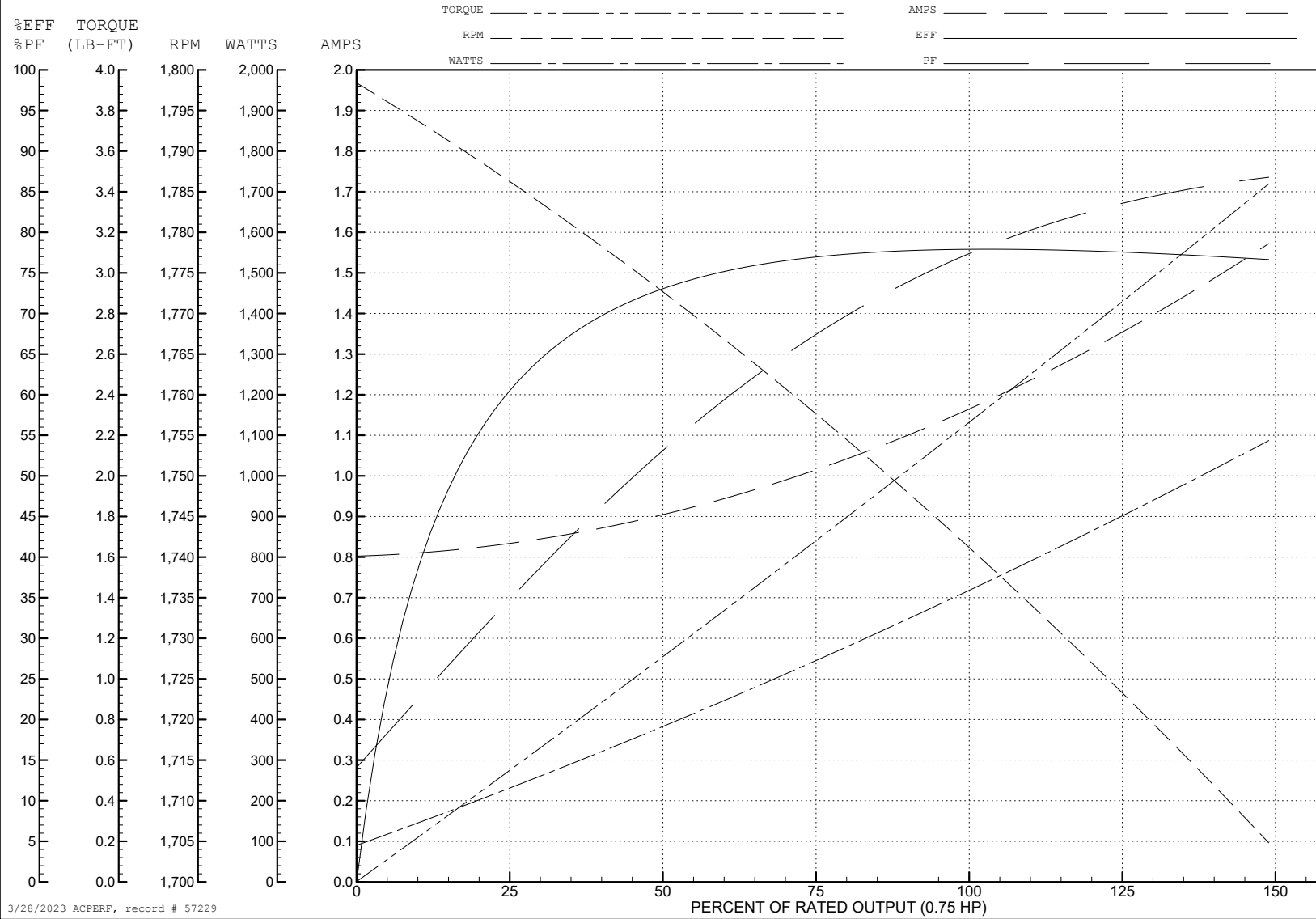
ABB Motors and Mechanical Inc.

WINDING # 35WGN906

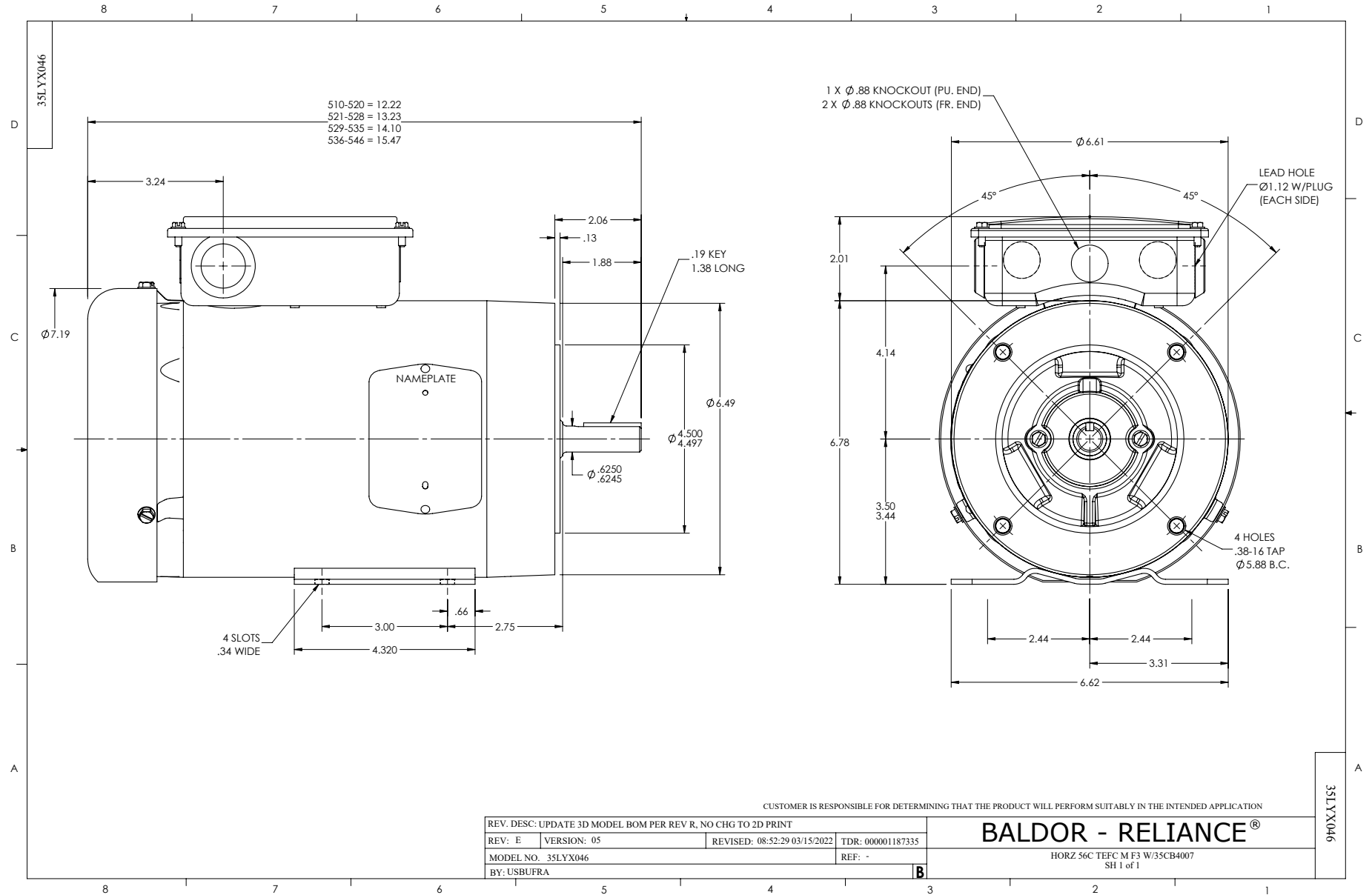
Typical performance - not guaranteed values.

0.75 HP 3 PH 60 HZ 1735 RPM 460 V 3514M

TORQUES (LB-FT): PO=8.76 PU=5.17 LR=5.75 LRA=8.22



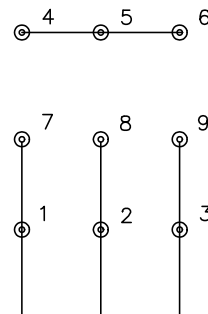
3/28/2023 ACPERF, record # 57229



CD0005

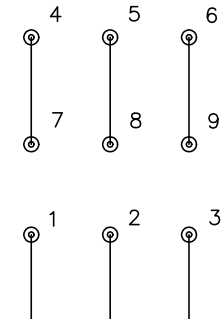


LOW VOLTAGE
(2Y)



LINE

HIGH VOLTAGE
(1Y)



LINE

NOTES:

1. INTERCHANGE ANY TWO LINE LEADS TO REVERSE ROTATION.
2. OPTIONAL THERMOSTATS ARE PROVIDED WHEN SPECIFIED.
3. ACTUAL NUMBER OF INTERNAL PARALLEL CIRCUITS MAY BE A MULTIPLE OF THOSE SHOWN ABOVE.
4. LEAD COLORS ARE OPTIONAL. LEADS MUST ALWAYS BE NUMBERED AS SHOWN.

CD0005

REV. DESC: REVISE TO SHOW OPTIONAL COLORS			
REV. LTR: E	BY: JLP	REVISED: 01/19/99 10:15	TDR: 0171435
S00000		FILE: AAA00005140	MDL: -
		MTL: -	

BALDOR ELECTRIC Co.

3PH, DV, 9 LEADS