

BALDOR • RELIANCE

Customer information packet

P36G3411

50HP, 1180RPM, 3PH, 60HZ, 365T, 1456M, TEAO, F1

Class -

Division - Not Applicable

Specifications

Enclosure	TEAO
Frame	365T
Frame Material	Iron
Frequency	60.00 Hz
Haz Area Division	Not Applicable
Motor Letter Type	Three Phase
Output @ Frequency	50.000 HP @ 60 HZ
Phase	3
Synchronous Speed @ Frequency	1200 RPM @ 60 HZ
Voltage @ Frequency	460.0 V @ 60 HZ 230.0 V @ 60 HZ
Agency Approvals	CSA EEV
Ambient Temperature	40 °C
Auxiliary Box	NO AUXILLARY BOX
Base Indicator	Rigid
Bearing Grease Type	Polyrex EM (-20F +300F)
Current @ Voltage	123.000 A @ 230.0 V 61.900 A @ 460.0 V
Design Code	B
Drip Cover	No Drip Cover
Duty Rating	CONT
Efficiency @ 100% Load	93.6 %
Feedback Device	NO FEEDBACK
Heater Indicator	No Heater
High Voltage Full Load Amps	61.9 a
Insulation Class	F
Inverter Code	Not Inverter
KVA Code	G
Lifting Lugs	Standard Lifting Lugs
Motor Lead Quantity/Wire Size	3 @ 4 AWG
Motor Standards	NEMA
Motor Type	A36052M

Part detail

Revision	F
Type	AC
Mech. spec.	
Base	
Status	INA/A
Elec. spec.	A36WG0756
Layout	611741-694
Eff. date	09-30-2015
CD Diagram	416820-002
Poles	06
Leads	3#4,6#6
Proprietary	False
Created date	10-19-2010

Mounting Arrangement	F1
Number of Poles	6
Overall Length	29.70 IN
Power Factor	81
Pulley End Bearing Type	Ball
Pulley Face Code	Standard
Service Factor	1.15
Shaft Diameter	0.000 IN
Shaft Ground Indicator	No Shaft Grounding
Shaft Rotation	Reversible
Shaft Slinger Indicator	No Slinger
Speed	1180 rpm
Speed Code	Single Speed
Starting Method	Direct on line
Thermal Device - Bearing	None
Thermal Device - Winding	None

Nameplate

000613007EV										
CAT NO			SPEC NO.		P36G3411					
HP	50	AMPS	123/61.9		VOLTS	230/460		DESIGN	B	
FRAME	365T	RPM	1180	HZ	60	C AMB	40	SF	1.15	
D.E. BRG.	65BC03JGG30A		PH	3	DUTY	CONT		INSUL.CLASS	F	
O.D.E. BRG.	65BC03JGG30A		TYPE	P		ENCL	TEAO	CODE	G	
D.E.BRG.DATA	6313		POWER FACTOR		81		NEMA NOM EFFICIENCY		93.6	
O.D.E.BRG.DATA	6313		MAX CORR KVAR		14.0		GUARANTEED EFFICIENCY		93.0	
3/4 LOAD EFF.	94.1		NEMA NOM/CSA QUOTED EFF							
SER.NO.			MOTOR WEIGHT		842					

000901002AAA

SUIT FOR 208 V @ 133 AMPS
500 MIN FPM @ RATED HP AND SF

611741-694

DUTY MASTER ALTERNATING CURRENT MOTORS

ENCLOSURE: TOTALLY ENCLOSED SQUIRREL-CAGE INDUCTION

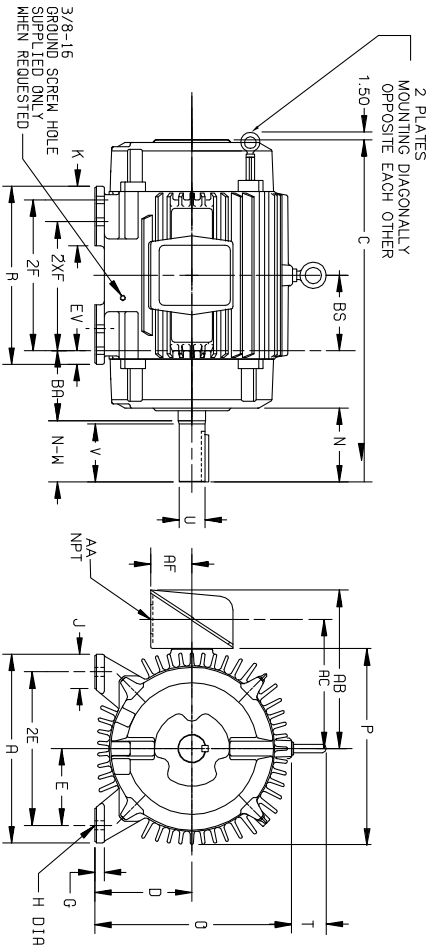
COOLING: NON-VENTILATED

MOUNTING: FOOT

FRAMES 364T THRU 365TS

CAST IRON CONSTRUCTION

WITH VERTICAL LIFTING



DIMENSIONS ARE IN INCHES

FRAME	A	D(2)	E	G	H	J	K	O	P	T	CAST IRON TERMINAL BOX			
(1)											AA	AB	AC	AF
364T-365TS	17.00	9.00	7.00	.88	.69	2.75	3.88	18.50	19.00	2.94	2.50	18.00	13.81	4.12

FRAME SIZE	C	BS	B	ZF	(4)				SHAFT AND KEY				WEIGHT (5)
					ZXF	N	N-W(6)	U(3)	V	SO.	LGTH.	WGT.	
364T	29.70	6.12	15.00	---	11.25	6.25	5.88	2.375	5.62	.625	4.25	8.10	
364TS	27.58	6.12	15.00	---	11.25	4.12	3.75	1.875	3.50	.500	2.00	8.05	
365T	29.70	6.12	15.00	12.25	---	6.25	5.88	2.375	5.62	.625	4.25	8.35	
365TS	27.58	6.12	15.00	12.25	---	4.12	3.75	1.875	3.50	.500	2.00	8.30	

- (1) SPECIAL DIMENSIONS APPLYING TO THIS ORDER ON THIS LINE:
CONDUIT BOX LOCATED ON OPPOSITE SIDE WHEN F-2-W-1, W-4-W-5-W-7, OR C-1 MOUNTING IS SPECIFIED.
- (2) "D" VARIES --- +.00, -.06.
IF MOUNTING CLEARANCE DETAILS ARE REQUIRED, CONSULT FACTORY.
- (3) "U" VARIES --- +.000, -.001.
MAXIMUM PERMISSIBLE SHAFT RUNOUT WHEN MEASURED .003 T.I.R. 1.825 DIA.
- (4) ALL FRAMES HAVE EIGHT MOUNTING HOLES FOR DUAL MOUNTING.
- (5) MOTOR WEIGHTS MAY VARY BY 15% DEPENDING UPON RATING.
- (6) "N-W" VARIES +.00, -.25.
- (7) OPTIONAL AUXILIARY CONDUIT BOX SUPPLIED ONLY WHEN SPECIFIED.

FRAME _____ TYPE _____ CERTIFIED FOR _____ RPM _____ PH _____ HZ _____ VOLTS _____
 ORDER _____ ITEM _____ HP _____ APPROVED BY _____ DATE _____
 SALES ORDER _____

699-1471116

BALDOR

DIM SHT TENV XT FT 360T WITH VERTICAL LIFTING

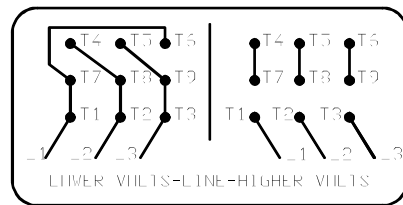
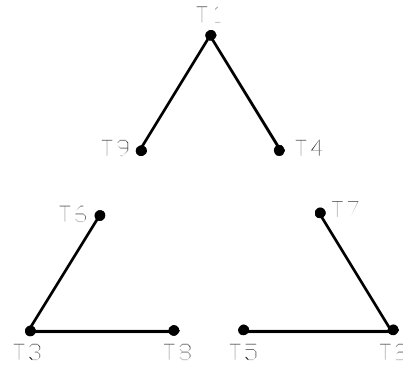
SH 1 of 1

CUSTOMER IS RESPONSIBLE FOR DETERMINING THAT BALDOR'S PRODUCT WILL PERFORM SUITABLY IN THE INTENDED APPLICATION.

REV. DESC: CHG CBOX "AA" DIMENSION TO 2-1/2"	VERSION: 01	TDR: 00000717435
REV. LTR: A	REVISED: 09:52:24 10/19/2011	BY: RAGGDM
FILE: \RAG\00008\959		
MTL: -		

416820-002

A-C MOTOR
 CONNECTION DIAGRAM
 STANDARD 9 LEAD DELTA-CONNECTED



(N.P. 1575-B)

416820-002

REV. DESC: FONT CHANGE FOR PDF SEARCHABLE		
REV. LTR: A	VERSION: 01	TDR: 000001009382
FILE: \MGA\00000\661	REVISED: 02:46:19 02/13/2020	BY: MGHMTT
MTL: -	© □	

BALDOR - RELIANCE®

CONN DIAG - STANDARD 9 LEAD, DELTA-CONNECTED

SH 1 of 1