

ABB BALDOR RELIANCE III

Customer information packet

CTM3774T

10 AIR OVERHP, 1760RPM, 3PH, 60HZ, 215T, 0736

Class - None

Division - Not Applicable

Specifications

| | |
|---------------------------------------|--|
| Enclosure | TEAO |
| Frame | 215T |
| Frame Material | Iron |
| Frequency | 60.00 Hz |
| Haz Area Class and Group | None |
| Haz Area Division | Not Applicable |
| Motor Letter Type | Three Phase |
| Output @ Frequency | 10.000 HP @ 60 HZ |
| Phase | 3 |
| Synchronous Speed @ Frequency | 1800 RPM @ 60 HZ |
| Voltage @ Frequency | 208.0 V @ 60 HZ 230.0 V @ 60 HZ 460.0 V @ 60 HZ |
| Agency Approvals | CSA UR |
| Ambient Temperature | 40 °C |
| Auxiliary Box | NO AUXILLARY BOX |
| Auxiliary Box Lead Termination | None |
| Base Indicator | Rigid |
| Bearing Grease Type | Polyrex EM (-20F +300F) |
| Blower | None |
| Current @ Voltage | 27.700 A @ 208.0 V 27.000 A @ 230.0 V 13.500 A @ 460.0 V |
| Design Code | B |
| Drip Cover | No Drip Cover |
| Duty Rating | CONT |
| Efficiency @ 100% Load | 89.5 % |
| Electrically Isolated Bearing | Not Electrically Isolated |
| Feedback Device | NO FEEDBACK |
| Front Shaft Indicator | None |
| Heater Indicator | No Heater |

Part Detail

| | |
|---------------------|------------|
| Revision | B |
| Type | AC |
| Mech. spec. | 07N391 |
| Base | |
| Status | PRD/A |
| Elec. spec. | 07WGT574 |
| Layout | 07LYN391 |
| Eff. date | 06-06-2024 |
| CD Diagram | CD0005 |
| Poles | 04 |
| Leads | 9#14 |
| Proprietary | False |
| Created date | 03-17-2023 |

| | |
|-------------------------------|------------------------------|
| High Voltage Full Load Amps | 13.5 a |
| Insulation Class | F |
| Inverter Code | Not Inverter |
| KVA Code | J |
| Lifting Lugs | Vertical Lifting Lugs |
| Locked Bearing Indicator | Locked Bearing |
| Motor Lead Quantity/Wire Size | 9 @ 14 AWG |
| Motor Lead Termination | Flying Leads |
| Motor Standards | NEMA |
| Motor Type | 0736M |
| Mounting Arrangement | F1 |
| Number of Poles | 4 |
| Overall Length | 19.54 IN |
| Power Factor | 77 |
| Product Family | Chemical Processing (Not DC) |
| Pulley End Bearing Type | Sealed Bearing |
| Pulley Face Code | Standard |
| Pulley Shaft Indicator | Tapped & Key |
| Rodent Screen | None |
| Service Factor | 1.15 |
| Shaft Diameter | 1.375 IN |
| Shaft Ground Indicator | No Shaft Grounding |
| Shaft Rotation | Reversible |
| Shaft Slinger Indicator | Shaft Slinger |
| Speed | 1760 rpm |
| Speed Code | Single Speed |
| Starting Method | Direct on line |
| Thermal Device - Bearing | None |
| Thermal Device - Winding | None |
| Vibration Sensor Indicator | No Vibration Sensor |
| Winding Thermal 1 | None |
| Winding Thermal 2 | None |

Nameplate

| NP2134 | |
|---------------------|---|
| CAT.NO. | CTM3774T |
| SPEC. | 07N391T574G1 |
| HP | 10 AIR OVER |
| VOLTS | 208-230/460 |
| AMP | 27.7-27/13.5 |
| RPM | 1760 |
| FRAME | 215T HZ 60 PH 3 |
| SER.F. | 1.15 CODE J DES B CL F |
| NEMA-NOM-EFF | 89.5 PF 77 |
| RATING | 40C AMB-CONT |
| CC | |
| DE | 6307 ODE 6206 |
| ENCL | TEAO SN |
| | 1700 FPM 170 CFM |

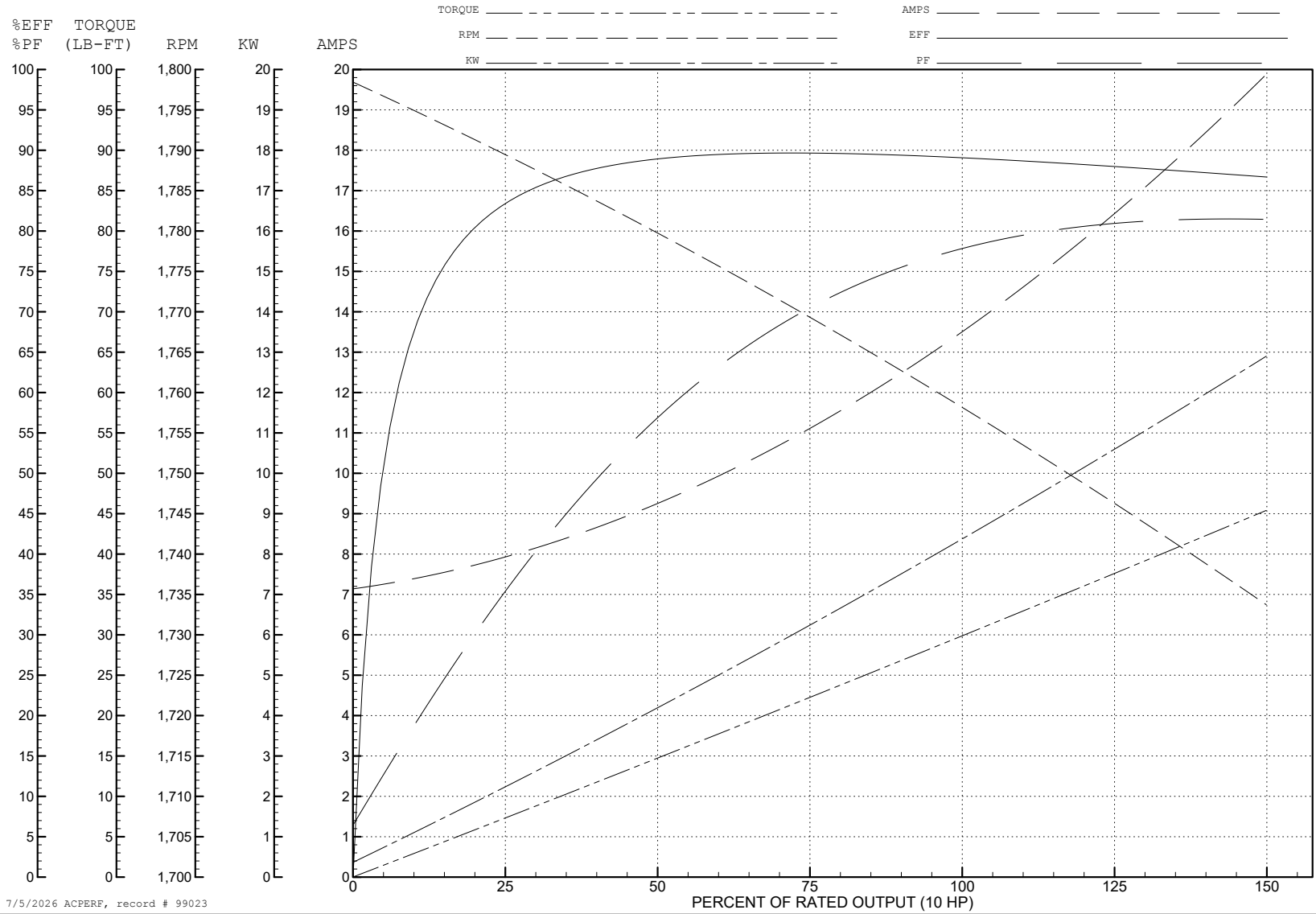
ABB Motors and Mechanical Inc.

WINDING # 07WGT574

Typical performance - not guaranteed values.

10 HP 3 PH 60 HZ 1760 RPM 460 V 0736M

TORQUES (LB-FT): PO=121 PU=48.8 LR=68.3 LRA=90.4



7/5/2026 ACPERF, record # 99023

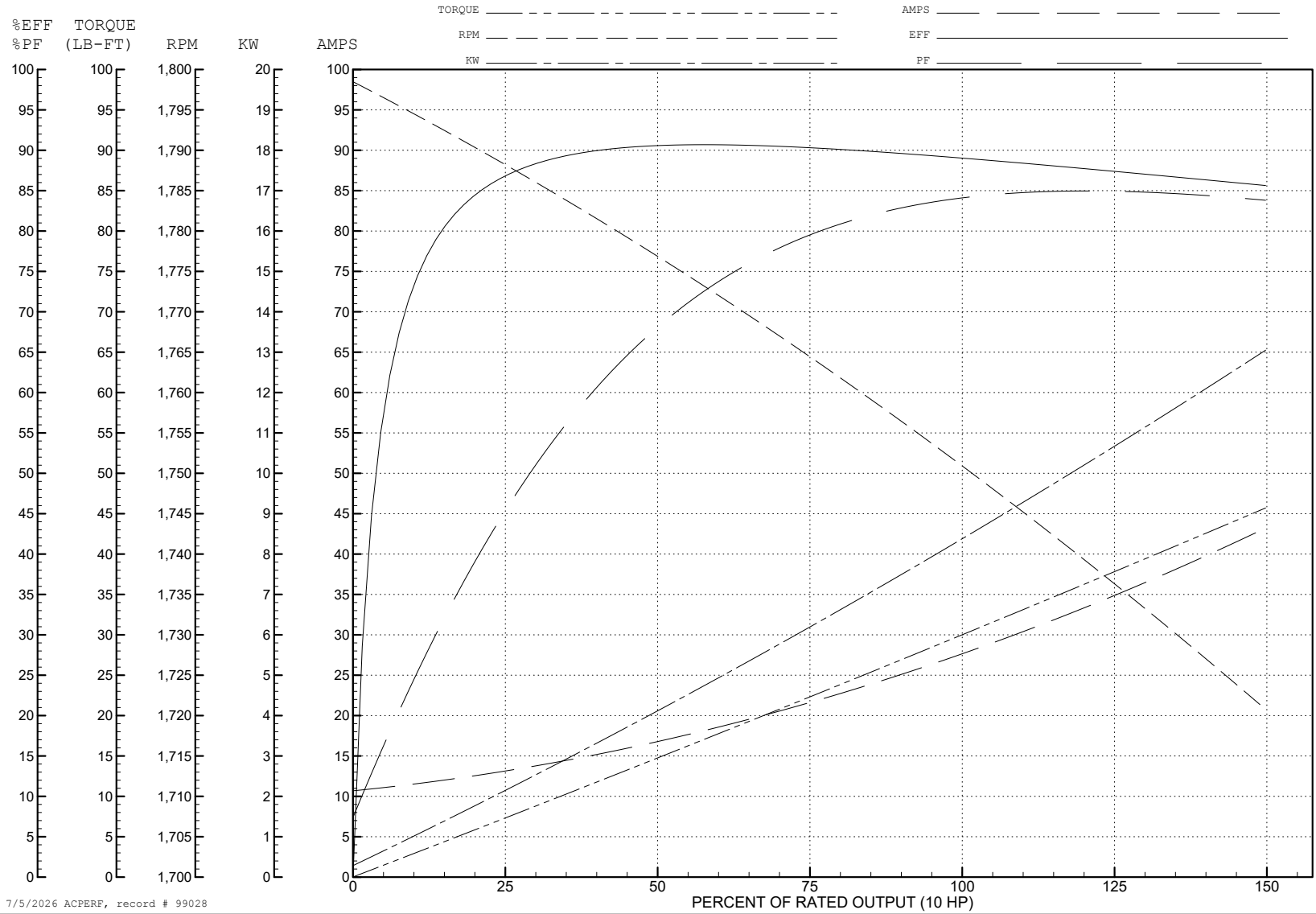
ABB Motors and Mechanical Inc.

WINDING # 07WGT574

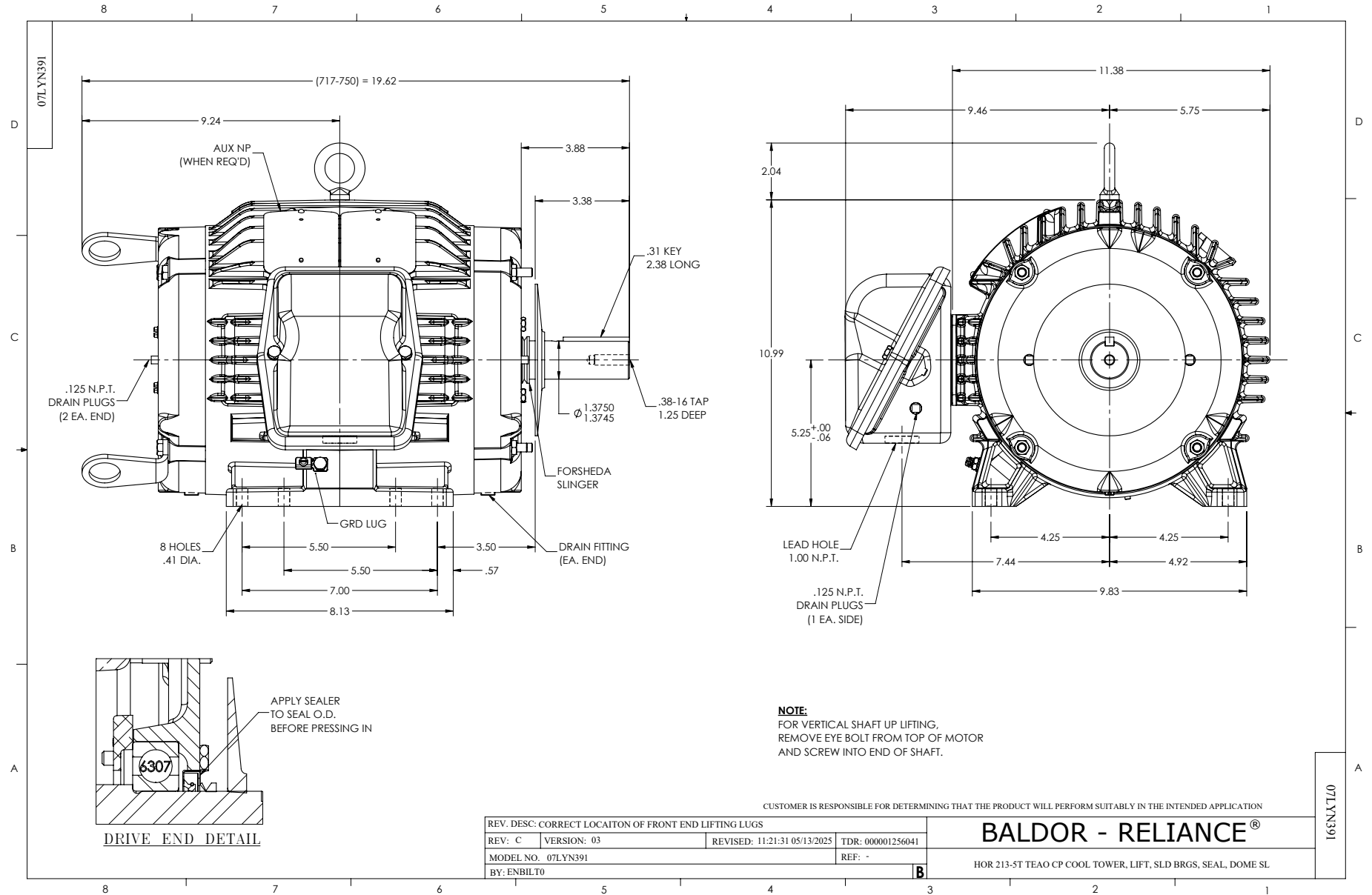
10 HP 3 PH 60 HZ 1760 RPM 208 V 0736M

Typical performance - not guaranteed values.

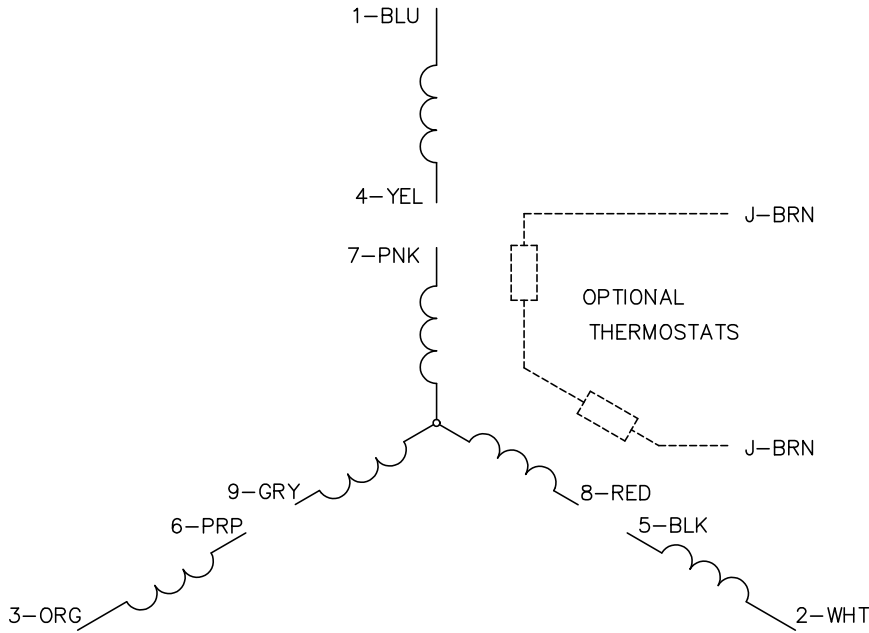
TORQUES (LB-FT): PO=97.2 PU=38 LR=53.2 LRA=159



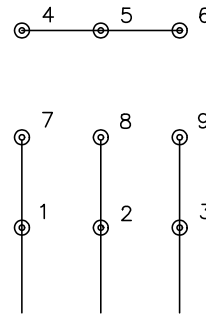
7/5/2026 ACPERF, record # 99028



CD0005

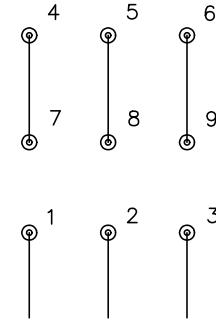


LOW VOLTAGE
(2Y)



LINE

HIGH VOLTAGE
(1Y)



LINE

NOTES:

1. INTERCHANGE ANY TWO LINE LEADS TO REVERSE ROTATION.
2. OPTIONAL THERMOSTATS ARE PROVIDED WHEN SPECIFIED.
3. ACTUAL NUMBER OF INTERNAL PARALLEL CIRCUITS MAY BE A MULTIPLE OF THOSE SHOWN ABOVE.
4. LEAD COLORS ARE OPTIONAL. LEADS MUST ALWAYS BE NUMBERED AS SHOWN.

CD0005

REV. DESC: REVISE TO SHOW OPTIONAL COLORS

REV. LTR: E BY: JLP REVISED: 01/19/99 10:15 TDR: 0171435

500000

FILE: AAA00005140

MDL: -

MTL: -

BALDOR ELECTRIC Co.

3PH, DV, 9 LEADS