



Customer information packet

CTM3665T

5HP, 1750RPM, 3PH, 60HZ, 184T, 0634M, TEAO, F1

Class - None

Division - Not Applicable

Specifications

Enclosure	TEAO
Frame	184T
Frame Material	Iron
Frequency	60.00 Hz
Haz Area Class and Group	None
Haz Area Division	Not Applicable
Motor Letter Type	Three Phase
Output @ Frequency	5.000 HP @ 60 HZ
Phase	3
Synchronous Speed @ Frequency	1800 RPM @ 60 HZ
Voltage @ Frequency	460.0 V @ 60 HZ 230.0 V @ 60 HZ 208.0 V @ 60 HZ
Agency Approvals	C UR US
Ambient Temperature	40 °C
Auxillary Box	No Auxillary Box
Auxillary Box Lead Termination	None
Base Indicator	Rigid
Bearing Grease Type	Polyrex EM (-20F +300F)
Blower	None
Current @ Voltage	7.200 A @ 460.0 V 14.600 A @ 208.0 V 14.400 A @ 230.0 V
Design Code	B
Drip Cover	No Drip Cover
Duty Rating	CONT
Efficiency @ 100% Load	87.5 %
Electrically Isolated Bearing	Not Electrically Isolated
Feedback Device	NO FEEDBACK
Front Shaft Indicator	None
Heater Indicator	No Heater
High Voltage Full Load Amps	7.2 a

Part detail

Revision	A
Type	AC
Mech. spec.	06K700
Base	
Status	PRD/A
Elec. spec.	06WGY807
Layout	06LYK700
Eff. date	06-06-2024
CD Diagram	CD0005
Poles	04
Leads	9#16
Proprietary	False
Created date	10-19-2023

Insulation Class	F
Inverter Code	Not Inverter
KVA Code	J
Lifting Lugs	Vertical Lifting Lugs
Locked Bearing Indicator	Locked Bearing
Motor Lead Quantity/Wire Size	9 @ 16 AWG
Motor Lead Termination	Flying Leads
Motor Standards	NEMA
Motor Type	0634M
Mounting Arrangement	F1
Number of Poles	4
Overall Length	13.68 IN
Power Factor	75
Product Family	Chemical Processing (Not DC)
Pulley End Bearing Type	Sealed Bearing
Pulley Face Code	Standard
Pulley Shaft Indicator	Tapped & Key
Rodent Screen	None
RoHS Status	ROHS COMPLIANT
Service Factor	1.15
Shaft Diameter	1.125 IN
Shaft Ground Indicator	No Shaft Grounding
Shaft Rotation	Reversible
Shaft Slinger Indicator	Shaft Slinger
Speed	1750 rpm
Speed Code	Single Speed
Starting Method	Direct on line
Thermal Device - Bearing	None
Thermal Device - Winding	None
Vibration Sensor Indicator	No Vibration Sensor
Winding Thermal 1	None
Winding Thermal 2	None

Nameplate

NP1258							
CAT.NO.	CTM3665T						
SPEC.	06K700Y807H1						
HP	5						
VOLTS	208-230/460						
AMP	14.6-14.4/7.2						
RPM	1750						
FRAME	184T	HZ	60	PH	3		
SER.F.	1.15	CODE	J	DES	B	CL	F
NEMA-NOM-EFF	87.5	PF	75				
RATING	40C AMB-CONT						
CC							
DE	6206	ODE	6205				
ENCL	TEAO	SN					
	1650 FPM AT 100CFM						

AC Induction Motor Performance Data

Record # 102149

Typical performance - not guaranteed values

Winding: 06WGY807-R001		Type: 0634M		Enclosure: TEAO	
Nameplate Data			460 V, 60 Hz: High Voltage Connection		
Rated Output (HP)	5	Full Load Torque	15.24 LB-FT		
Volts	208-230/460	Start Configuration	direct on line		
Full Load Amps	14.6-14.4/7.2	Breakdown Torque	47.7 LB-FT		
R.P.M.	1750	Pull-up Torque	31 LB-FT		
Hz	60 Phase	Locked-rotor Torque	34.9 LB-FT		
NEMA Design Code	B KVA Code	Starting Current	46 A		
Service Factor (S.F.)	1.15	No-load Current	3.88 A		
NEMA Nom. Eff.	87.5 Power Factor	Line-line Res. @ 25°C	2.83 Ω		
Rating - Duty	40C AMB-CONT	Temp. Rise @ Rated Load	58°C		
S.F. Amps		Temp. Rise @ S.F. Load	69°C		
		Locked-rotor Power Factor	44.1		
		Rotor inertia	0.317 lb-ft ²		

Load Characteristics 460 V, 60 Hz, 5 HP

% of Rated Load	25	50	75	100	125	150	S.F.
Power Factor	36	56	69	75	80	82	77
Efficiency	81.2	87	88.2	87.5	86.4	84.6	87.3
Speed	1787	1775	1761	1746	1729	1710	1737
Line amperes	4.17	4.9	5.87	7.19	8.57	10.21	7.96

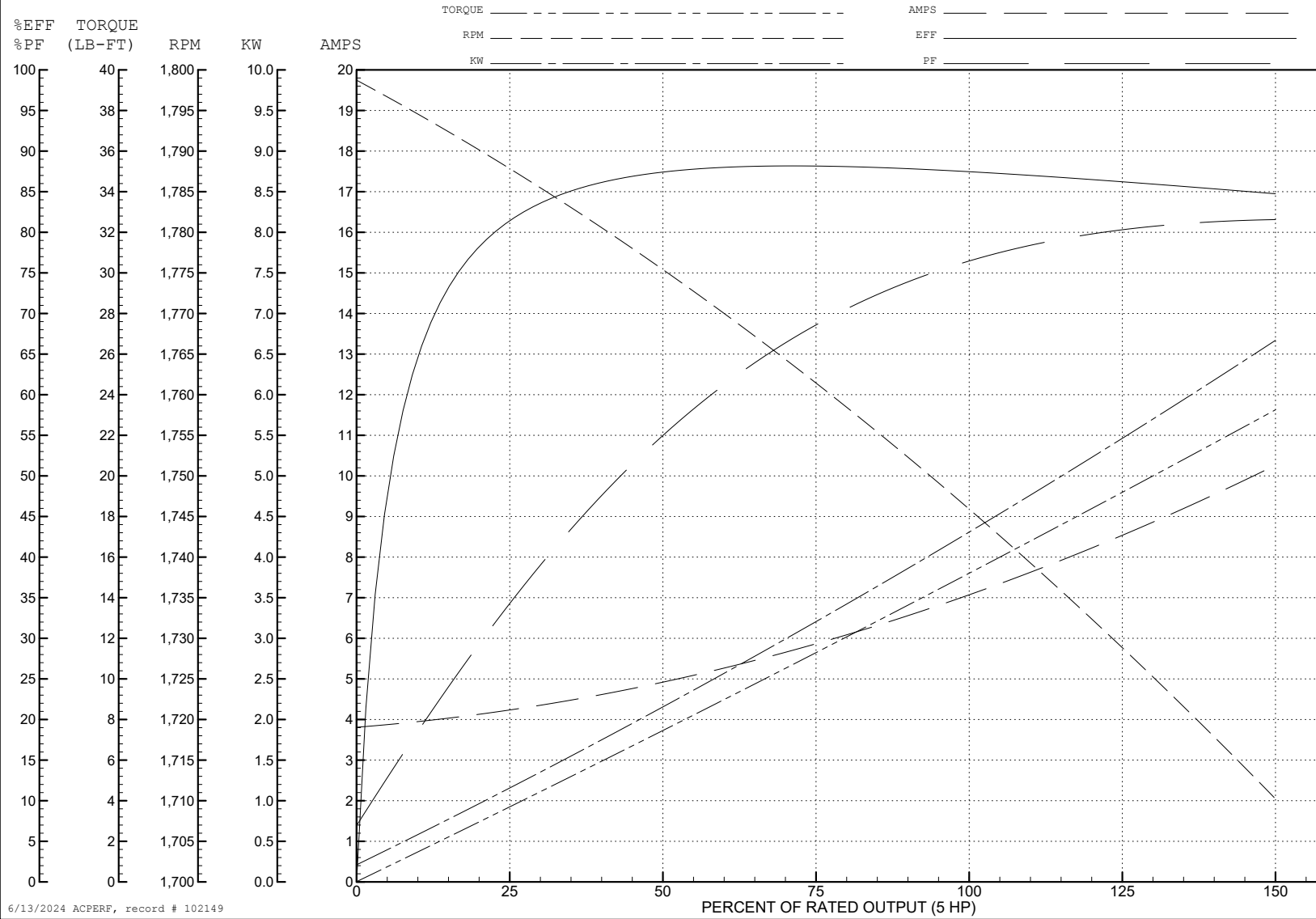
ABB Motors and Mechanical Inc.

WINDING # 06WGY807

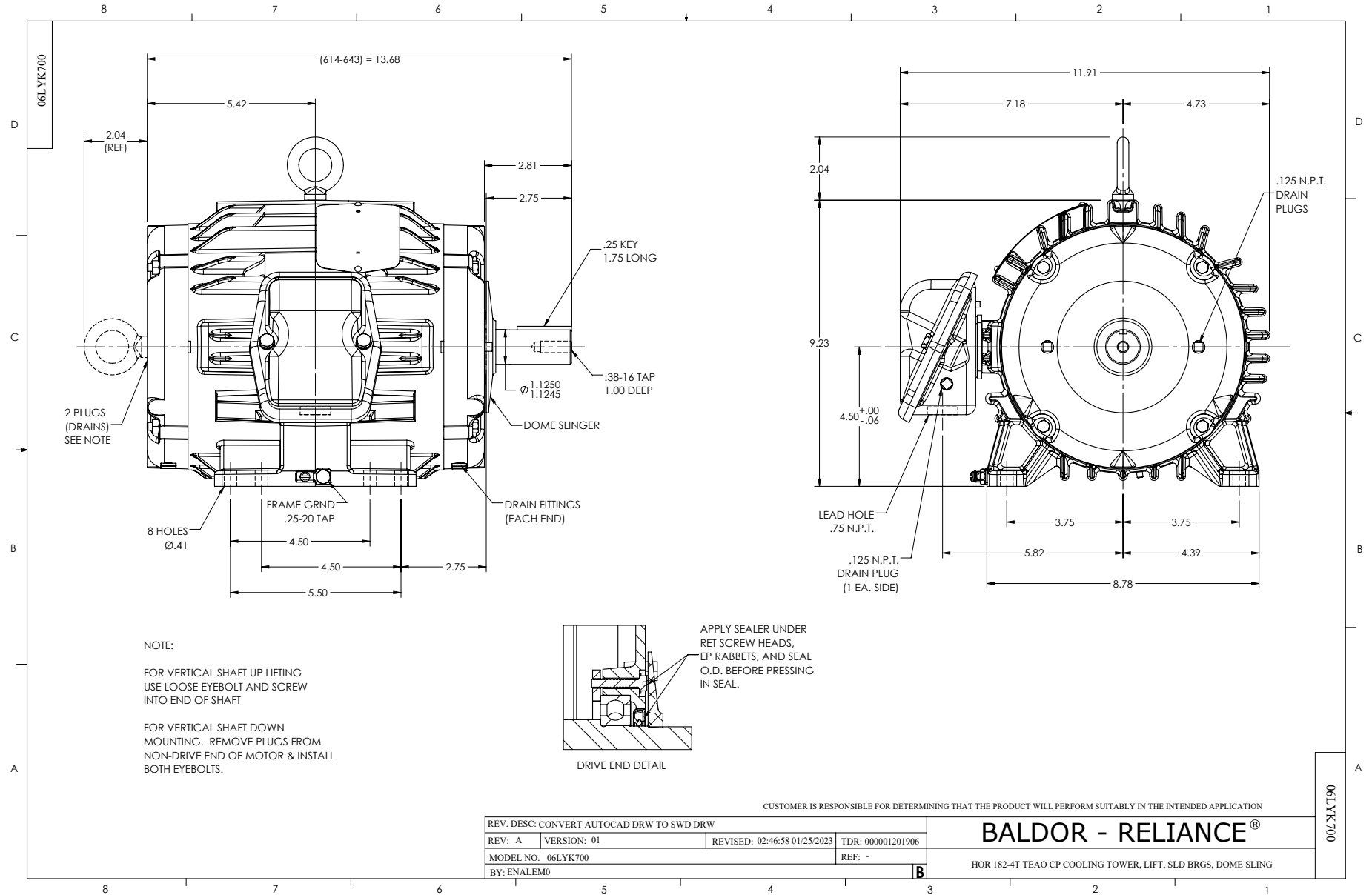
Typical performance - not guaranteed values.

5 HP 3 PH 60 HZ 1750 RPM 460 V 0634M

TORQUES (LB-FT): PO=47.7 PU=31 LR=34.9 LRA=46



6/13/2024 ACPERF, record # 102149



CD0005



LOW VOLTAGE
(2Y)



LINE

HIGH VOLTAGE
(1Y)



LINE

NOTES:

1. INTERCHANGE ANY TWO LINE LEADS TO REVERSE ROTATION.
2. OPTIONAL THERMOSTATS ARE PROVIDED WHEN SPECIFIED.
3. ACTUAL NUMBER OF INTERNAL PARALLEL CIRCUITS MAY BE A MULTIPLE OF THOSE SHOWN ABOVE.
4. LEAD COLORS ARE OPTIONAL. LEADS MUST ALWAYS BE NUMBERED AS SHOWN.

CD0005

REV. DESC: REVISE TO SHOW OPTIONAL COLORS			
REV. LTR: E	BY: JLP	REVISED: 01/19/99 10:15	TDR: 0171435
S00000		FILE: AAA00005140	MDL: -
		MTL: -	

BALDOR ELECTRIC Co.

3PH, DV, 9 LEADS