

ABB BALDOR RELIANCE III

Customer information packet

CTM2332T

10 AIR OVERHP, 1175RPM, 3PH, 60HZ, 256T, 0946

Class - None

Division - Not Applicable

Specifications

Enclosure	TEAO
Frame	256T
Frame Material	Iron
Frequency	60.00 Hz
Haz Area Class and Group	None
Haz Area Division	Not Applicable
Motor Letter Type	Three Phase
Output @ Frequency	10.000 HP @ 60 HZ
Phase	3
Synchronous Speed @ Frequency	1200 RPM @ 60 HZ
Voltage @ Frequency	230.0 V @ 60 HZ 460.0 V @ 60 HZ
Agency Approvals	CSA UR
Ambient Temperature	40 °C
Auxiliary Box	NO AUXILLARY BOX
Auxiliary Box Lead Termination	None
Base Indicator	Rigid
Bearing Grease Type	Polyrex EM (-20F +300F)
Blower	None
Current @ Voltage	37.000 A @ 208.0 V 28.800 A @ 230.0 V 14.400 A @ 460.0 V
Design Code	B
Drip Cover	No Drip Cover
Duty Rating	CONT
Efficiency @ 100% Load	89.5 %
Electrically Isolated Bearing	Not Electrically Isolated
Feedback Device	NO FEEDBACK
Front Face Code	Standard
Front Shaft Indicator	None
Heater Indicator	No Heater

Part Detail

Revision	U
Type	AC
Mech. spec.	09L877
Base	
Status	PRD/A
Elec. spec.	09WGX829
Layout	09LYL877
Eff. date	11-14-2023
CD Diagram	CD0005
Poles	06
Leads	9#12
Proprietary	False
Created date	08-14-2015

High Voltage Full Load Amps	14.4 a
Insulation Class	F
Inverter Code	Not Inverter
KVA Code	H
Lifting Lugs	Vertical Lifting Lugs
Locked Bearing Indicator	Locked Bearing
Motor Lead Exit	Ko Box
Motor Lead Quantity/Wire Size	9 @ 12 AWG
Motor Lead Termination	Flying Leads
Motor Standards	NEMA
Motor Type	0946M
Mounting Arrangement	F1
Number of Poles	6
Overall Length	23.00 IN
Power Factor	73
Product Family	Chemical Processing (Not DC)
Pulley End Bearing Type	Sealed Bearing
Pulley Face Code	Standard
Pulley Shaft Indicator	Standard
Rodent Screen	None
Service Factor	1.15
Shaft Diameter	1.625 IN
Shaft Extension Location	Pulley End
Shaft Ground Indicator	No Shaft Grounding
Shaft Rotation	Reversible
Shaft Slinger Indicator	Shaft Slinger
Speed	1175 rpm
Speed Code	Single Speed
Starting Method	Direct on line
Thermal Device - Bearing	None
Thermal Device - Winding	None
Vibration Sensor Indicator	No Vibration Sensor
Winding Thermal 1	None
Winding Thermal 2	None

Nameplate

NP1258	
CAT.NO.	CTM2332T
SPEC.	09L877X829H2
HP	10 AIR OVER
VOLTS	230/460
AMP	28.8/14.4
RPM	1175
FRAME	256T HZ 60 PH 3
SER.F.	1.15 CODE H DES B CL F
NEMA-NOM-EFF	89.5 PF 73
RATING	40C AMB-CONT
CC	
DE	6309 ODE 6208
ENCL	TEAO SN
	1800 FPM @ 250CFM

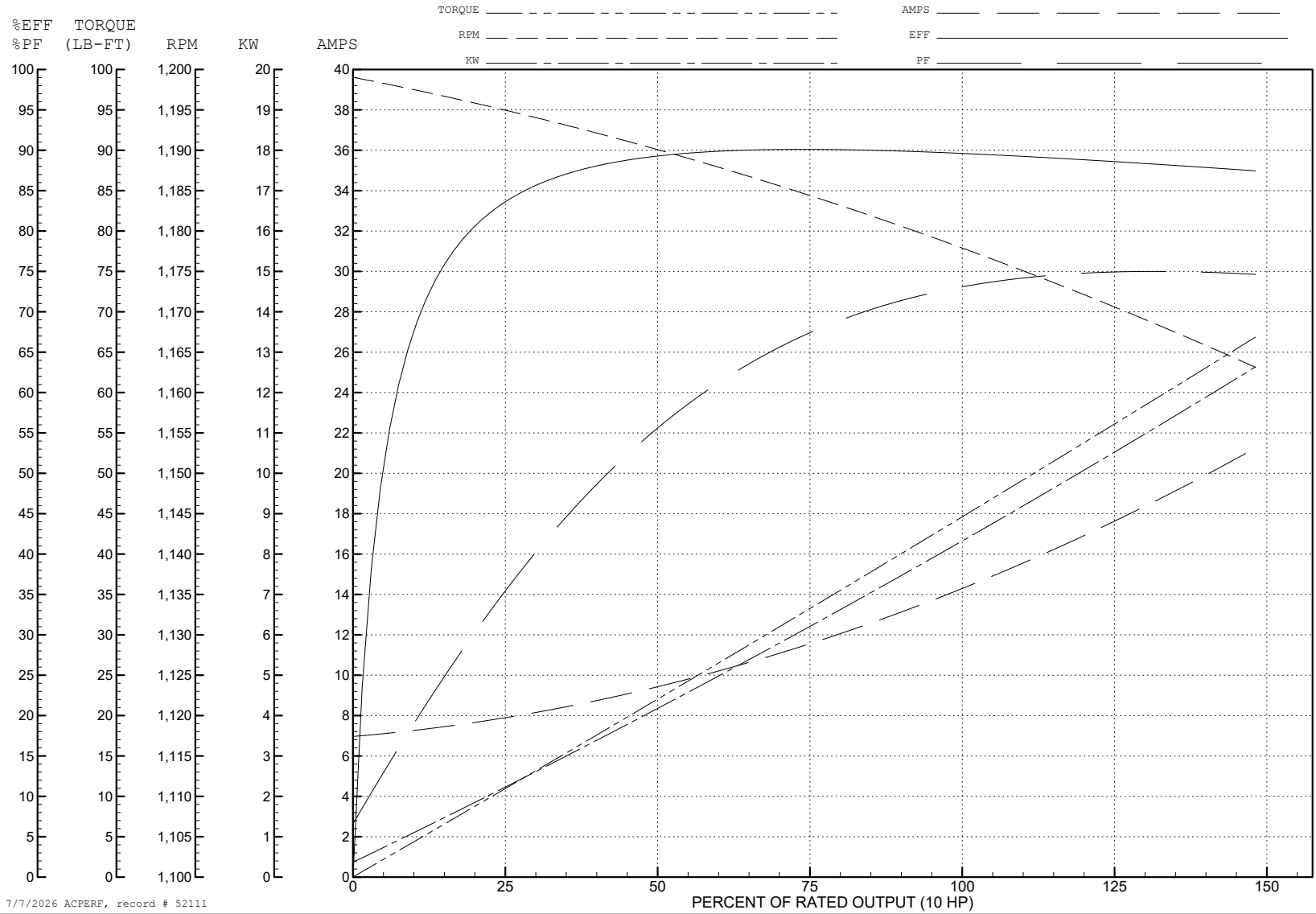
ABB Motors and Mechanical Inc.

WINDING # 09WGX829

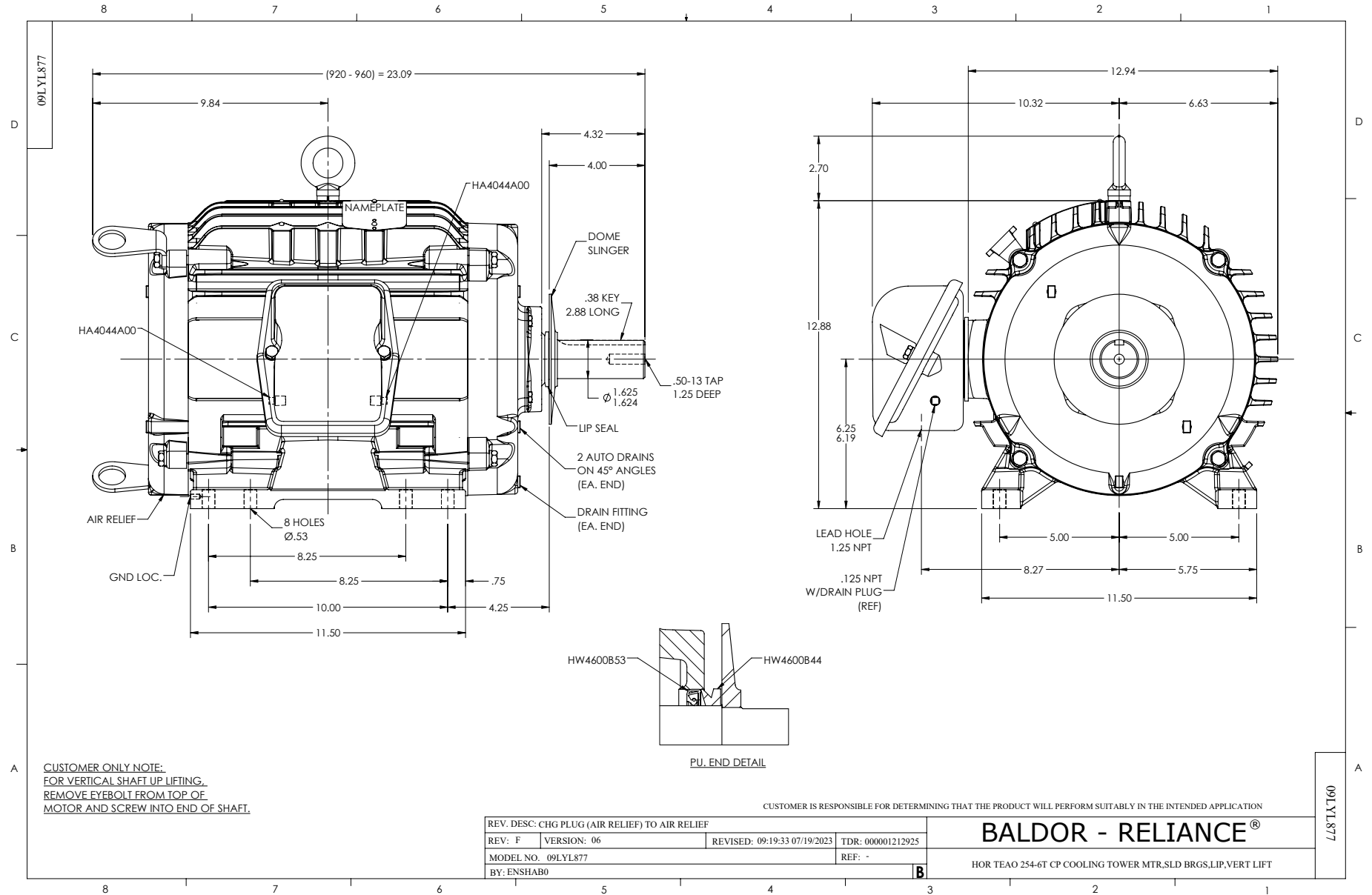
Typical performance - not guaranteed values.

10 HP 3 PH 60 HZ 1175 RPM 460 V 0946M

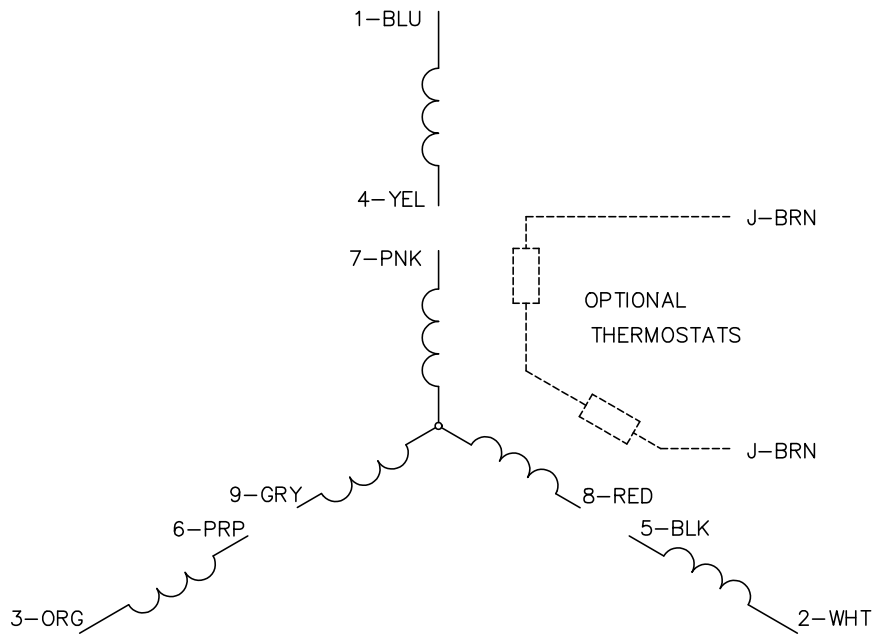
TORQUES (LB-FT): PO=139 PU=53.5 LR=76.4 LRA=86.1



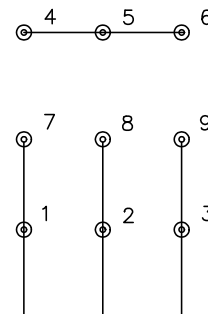
7/7/2026 ACPERF, record # 52111



CD0005



LOW VOLTAGE
(2Y)



LINE

HIGH VOLTAGE
(1Y)



LINE

NOTES:

1. INTERCHANGE ANY TWO LINE LEADS TO REVERSE ROTATION.
2. OPTIONAL THERMOSTATS ARE PROVIDED WHEN SPECIFIED.
3. ACTUAL NUMBER OF INTERNAL PARALLEL CIRCUITS MAY BE A MULTIPLE OF THOSE SHOWN ABOVE.
4. LEAD COLORS ARE OPTIONAL. LEADS MUST ALWAYS BE NUMBERED AS SHOWN.

CD0005

REV. DESC: REVISE TO SHOW OPTIONAL COLORS			
REV. LTR: E	BY: JLP	REVISED: 01/19/99 10:15	TDR: 0171435
S00000		FILE: AAA00005140	MDL: -
		MTL: -	

BALDOR ELECTRIC Co.

3PH, DV, 9 LEADS