

ABB BALDOR RELIANCE III

Customer information packet

CTM2276T

7.5HP, 1160RPM, 3PH, 60HZ, 254T, 0756M, TEAO, F

Class - None

Division - Not Applicable

Specifications

Enclosure	TEAO
Frame	254T
Frame Material	Iron
Frequency	60.00 Hz
Haz Area Class and Group	None
Haz Area Division	Not Applicable
Motor Letter Type	Three Phase
Output @ Frequency	7.500 HP @ 60 HZ
Phase	3
Synchronous Speed @ Frequency	1200 RPM @ 60 HZ
Voltage @ Frequency	460.0 V @ 60 HZ 230.0 V @ 60 HZ 208.0 V @ 60 HZ
Agency Approvals	CSA UR
Ambient Temperature	40 °C
Auxiliary Box	NO AUXILLARY BOX
Auxiliary Box Lead Termination	None
Base Indicator	Rigid
Bearing Grease Type	Polyrex EM (-20F +300F)
Blower	None
Current @ Voltage	24.000 A @ 208.0 V 21.800 A @ 230.0 V 10.900 A @ 460.0 V
Design Code	A
Drip Cover	No Drip Cover
Duty Rating	CONT
Efficiency @ 100% Load	89.5 %
Electrically Isolated Bearing	Not Electrically Isolated
Feedback Device	NO FEEDBACK
Front Face Code	Standard
Front Shaft Indicator	None

Part Detail

Revision	G
Type	AC
Mech. spec.	07N393
Base	
Status	PRD/A
Elec. spec.	07WGX825
Layout	07LYN393
Eff. date	08-17-2023
CD Diagram	CD0005
Poles	06
Leads	9#14
Proprietary	False
Created date	08-14-2015

Heater Indicator	No Heater
High Voltage Full Load Amps	10.9 a
Insulation Class	F
Inverter Code	Not Inverter
KVA Code	K
Lifting Lugs	Vertical Lifting Lugs
Locked Bearing Indicator	Locked Bearing
Motor Lead Exit	Ko Box
Motor Lead Quantity/Wire Size	9 @ 14 AWG
Motor Lead Termination	Flying Leads
Motor Standards	NEMA
Motor Type	0756M
Mounting Arrangement	F1
Number of Poles	6
Overall Length	22.16 IN
Power Factor	72
Product Family	Chemical Processing (Not DC)
Pulley End Bearing Type	Sealed Bearing
Pulley Face Code	Standard
Pulley Shaft Indicator	Tapped & Key
Rodent Screen	None
Service Factor	1.15
Shaft Diameter	1.625 IN
Shaft Extension Location	Pulley End
Shaft Ground Indicator	No Shaft Grounding
Shaft Rotation	Reversible
Shaft Slinger Indicator	Shaft Slinger
Speed	1160 rpm
Speed Code	Single Speed
Starting Method	Direct on line
Thermal Device - Bearing	None
Thermal Device - Winding	None
Vibration Sensor Indicator	No Vibration Sensor
Winding Thermal 1	None

Winding Thermal 2

None

Nameplate

NP1258									
CAT.NO.	CTM2276T								
SPEC.	07N393X825H1								
HP	7.5								
VOLTS	208-230/460								
AMP	24-21.8/10.9								
RPM	1160								
FRAME	254T	HZ	60	PH	3				
SER.F.	1.15	CODE	K	DES	A	CL	F		
NEMA-NOM-EFF	89.5	PF	72						
RATING	40C AMB-CONT								
CC									
DE	6309	ODE	6206						
ENCL	TEAO	SN							
	1275 FPM 170 CFM								

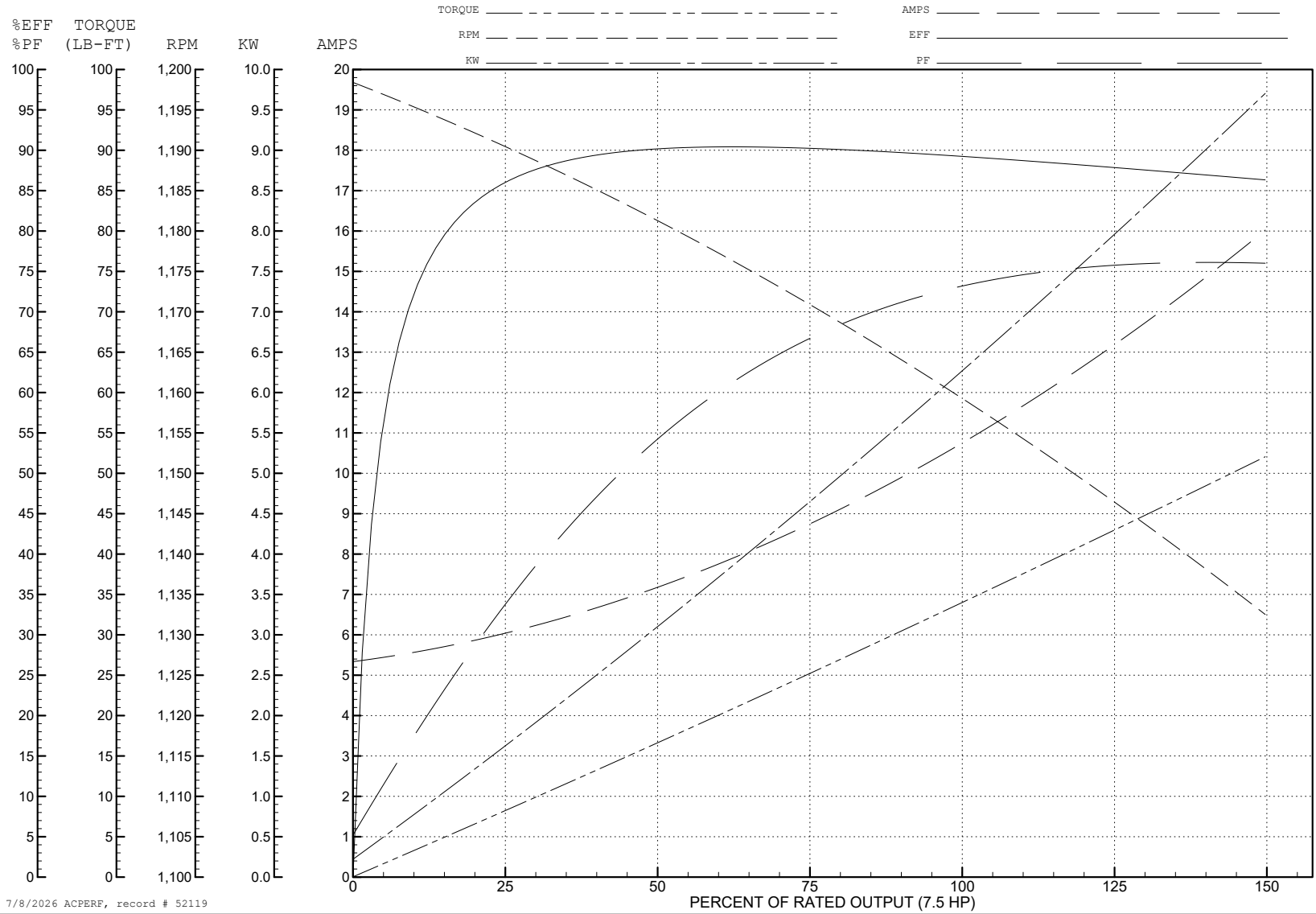
ABB Motors and Mechanical Inc.

WINDING # 07WGX825

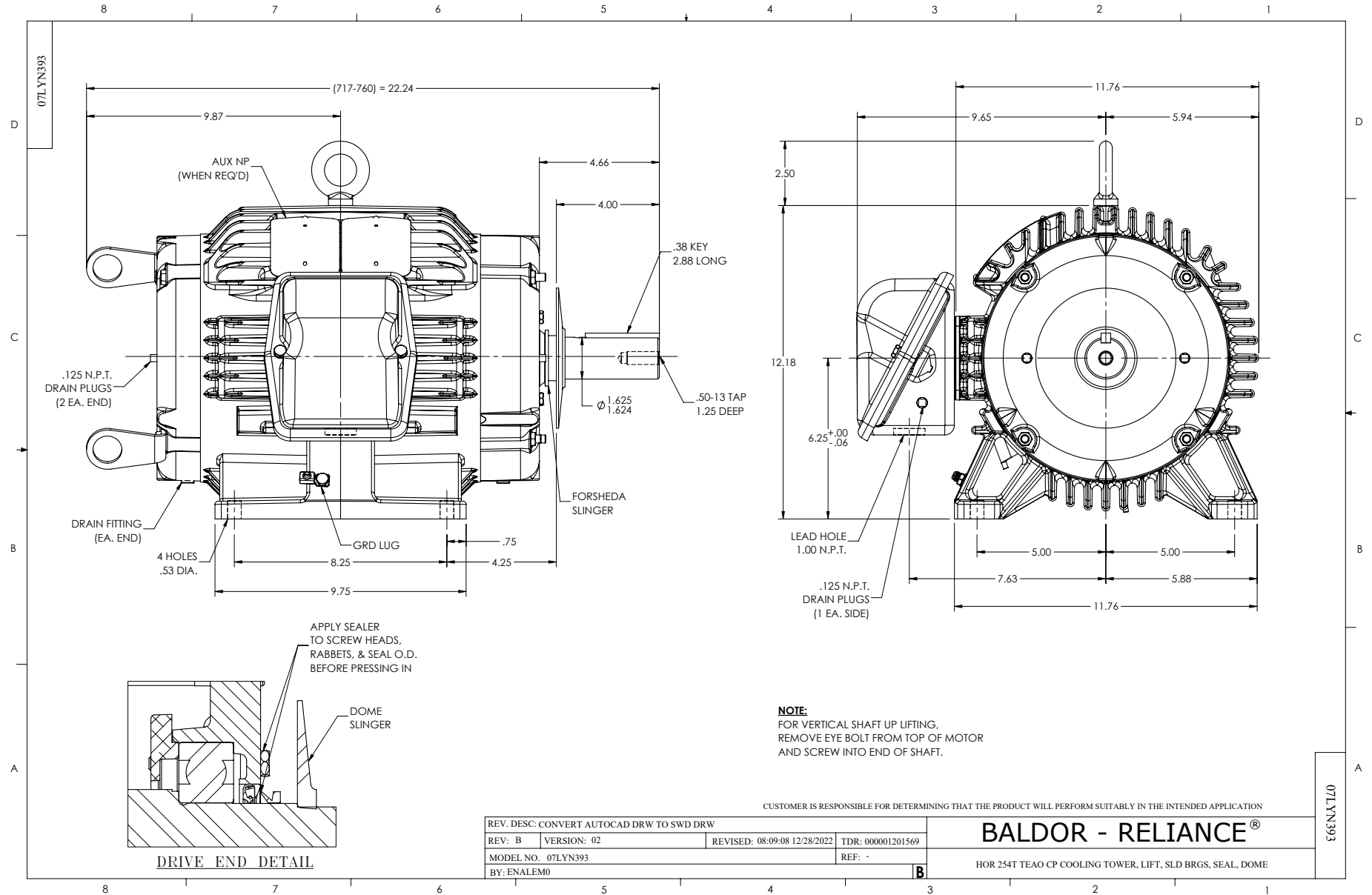
Typical performance - not guaranteed values.

7.5 HP 3 PH 60 HZ 1160 RPM 460 V 0756M

TORQUES (LB-FT): PO=151 PU=76 LR=99.6 LRA=82.4



7/8/2026 ACPERF, record # 52119



CD0005



LOW VOLTAGE
(2Y)



LINE

HIGH VOLTAGE
(1Y)



LINE

NOTES:

1. INTERCHANGE ANY TWO LINE LEADS TO REVERSE ROTATION.
2. OPTIONAL THERMOSTATS ARE PROVIDED WHEN SPECIFIED.
3. ACTUAL NUMBER OF INTERNAL PARALLEL CIRCUITS MAY BE A MULTIPLE OF THOSE SHOWN ABOVE.
4. LEAD COLORS ARE OPTIONAL. LEADS MUST ALWAYS BE NUMBERED AS SHOWN.

CD0005

REV. DESC: REVISE TO SHOW OPTIONAL COLORS

REV. LTR: E BY: JLP REVISED: 01/19/99 10:15 TDR: 0171435

500000

FILE: AAA00005140

MDL: -

MTL: -

BALDOR ELECTRIC Co.

3PH, DV, 9 LEADS