

ABB BALDOR RELIANCE III

Customer information packet

CTM1767T

60HP, 1775RPM, 3PH, 60HZ, 364T, TEFC, FOOT,

Class - None

Division - Not Applicable

Specifications

Enclosure	TEFC
Frame	364T
Frame Material	Iron
Frequency	60.00 Hz
Haz Area Class and Group	None
Haz Area Division	Not Applicable
Motor Letter Type	Three Phase
Output @ Frequency	15.000 HP @ 60 HZ 60.000 HP @ 60 HZ
Phase	3
Synchronous Speed @ Frequency	900 RPM @ 60 HZ
Voltage @ Frequency	460.0 V @ 60 HZ
Agency Approvals	CCSA US
Ambient Temperature	40 °C
Auxiliary Box	NO AUXILLARY BOX
Base Indicator	Rigid
Bearing Grease Type	Polyrex EM (-20F +300F)
Current @ Voltage	69.600 A @ 460.0 V
Design Code	B
Drip Cover	No Drip Cover
Duty Rating	CONT
Efficiency @ 100% Load	93.0 %
Feedback Device	NO FEEDBACK
Heater Indicator	No Heater
High Voltage Full Load Amps	24.1 a
Insulation Class	F
Inverter Code	Not Inverter
KVA Code	H
Lifting Lugs	Standard Lifting Lugs
Motor Lead Quantity/Wire Size	3 @ 4 AWG
Motor Standards	NEMA
Motor Type	A36052M

Part Detail

Revision	L
Type	AC
Mech. spec.	
Base	
Status	PRD/A
Elec. spec.	A36WG0808
Layout	617438-427
Eff. date	09-27-2023
CD Diagram	416820-007
Poles	04/08
Leads	3#4,3#8
Proprietary	False
Created date	10-19-2010

Mounting Arrangement	F1
Number of Poles	4
	8
Overall Length	33.44 IN
Pulley End Bearing Type	Ball
Pulley Face Code	Standard
Service Factor	1.15
Shaft Ground Indicator	No Shaft Grounding
Shaft Rotation	Reversible
Shaft Slinger Indicator	Shaft Slinger
Speed	1775 rpm
	885 rpm
Speed Code	2S-1W-VT
Starting Method	Direct on line
Thermal Device - Bearing	None
Thermal Device - Winding	None

Nameplate

NP2295L										
SPEC NO.	P36G6574		CAT.NO.	CTM1767T		FRAME	364T			
HP	RPM	VOLTS	AMPS		HZ	TYPE	PM			
60	1775	460	69.6		60	SF	1.15			
15	885	460	24.1		60	INSUL.CLASS	F			
DRIVE END BEARING	65BC03JPP30A		DUTY	CONT		AMB	40			
OPP D.E. BEARING	65BC03JPP30A		ENCL	TEFC		DESIGN	B			
SER.NO.			CODE	H	PHASE	3				
HIGH SPEED EFF: NOM=93.0, GUAR					=92.4					
COOLING TOWER; IP-55 CONSTR					CAT:CTM1767T		MOTOR WEIGHT			

REL. S.O.	FRAME	HP	TYPE	PHASE/HERTZ	RPM	VOLTS
	364T	60/15	PM	3/60	1775/885	460

AMPS	DUTY	AMB °C/ INSUL.	S.F.	NEMA DESIGN	CODE LETTER	ENCL.
69.6/24.1	CONT	40/F	1.15	B	H	TEFC

E/S	ROTOR	TEST S.O.	TEST DATE	STATOR RES. @25 °C OHMS (BETWEEN LINES)
591538	418141-31-TE	---	---	.132/.529

PERFORMANCE

LOAD	HP	AMPERES	RPM	% POWER FACTOR	% EFFICIENCY
NO LOAD	0/ 0	25.9/ 15.5	1800/ 900	5.73/ 4.11	0/ 0
1/4	15.0/ 3.76	30.6/ 16.1	1795/ 897	51.4/ 26.1	89.6/ 83.6
2/4	30.0/ 7.51	41.3/ 17.9	1789/ 894	73.0/ 44.1	93.0/ 89.1
3/4	45.0/ 11.2	54.5/ 20.6	1784/ 891	82.7/ 56.7	93.6/ 90.1
4/4	60.0/ 15.0	69.6/ 24.1	1777/ 888	86.6/ 65.0	93.3/ 89.8
5/4	74.9/ 18.8	85.9/ 28.2	1771/ 884	88.2/ 70.0	92.6/ 89.0

SPEED TORQUE

	RPM	TORQUE % FULL LOAD	TORQUE LB.-FT.	AMPERES
LOCKED ROTOR	0/ 0	180/ 149	319/ 132	522/ 115
PULL UP	700/ 150	149/ 135	264/ 120	490/ 110
BREAKDOWN	1668/ 840	283/ 215	501/ 190	298/ 69.0
FULL LOAD	1777/ 888	100/ 100	177/ 88.7	69.6/ 24.1

AMPERES SHOWN FOR 460. VOLT CONNECTION. IF OTHER VOLTAGE CONNECTIONS ARE AVAILABLE, THE AMPERES WILL VARY INVERSELY WITH THE RATED VOLTAGE

REMARKS: TYPICAL DATA
 XE MOTOR-TYPICAL DATA-NEMA NOM. EFF. 93.0 PCT.
 ONE WINDING- VARIABLE TORQUE



DR. BY J. J. HARRISON
 CK. BY G. R. WEBB
 APP. BY W. L. SMITH
 DATE 06/06/02

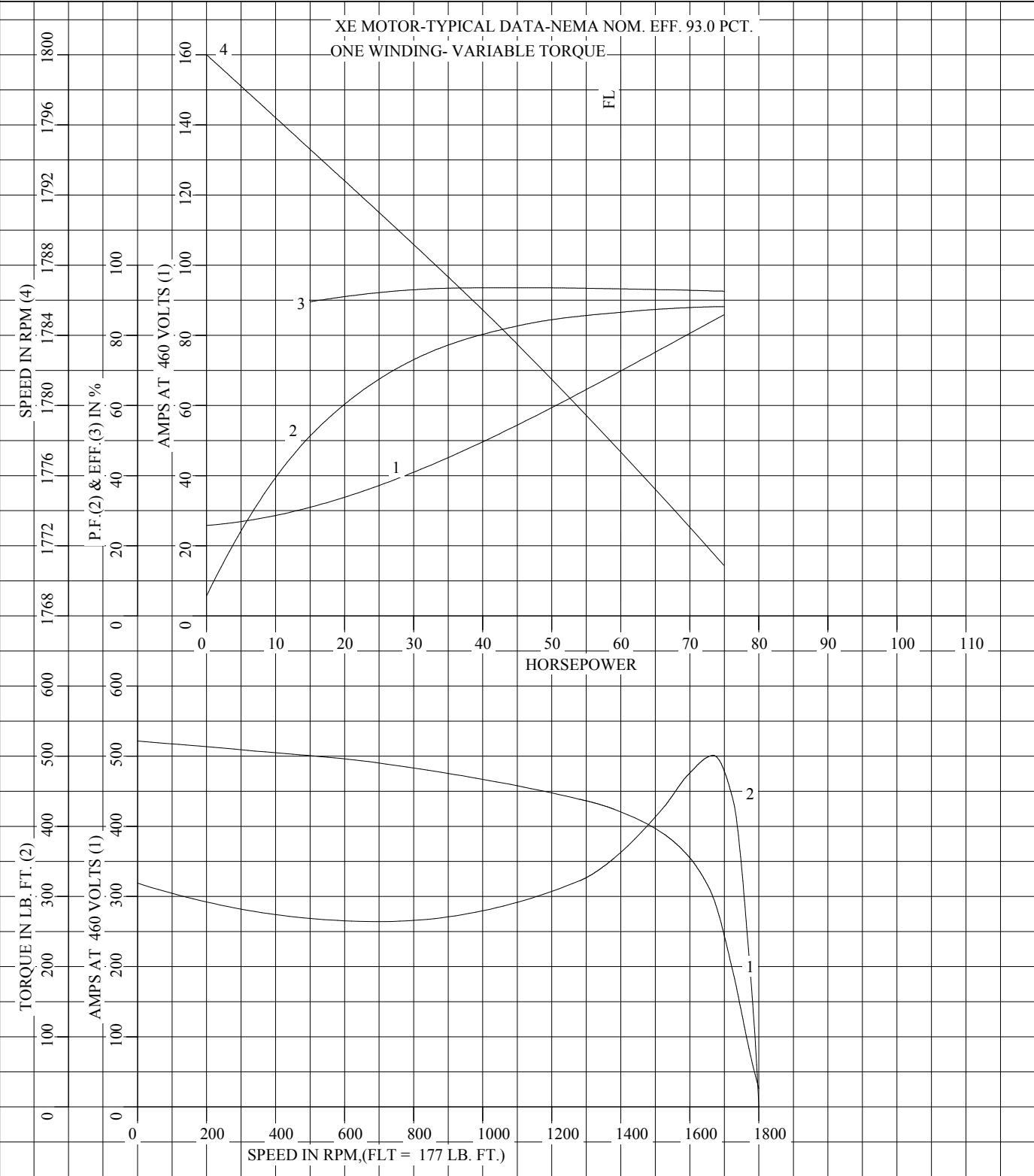
**A-C MOTOR
 PERFORMANCE A36WG0808-R001
 DATA** ISSUE DATE 01/07/11

FRAME 364T
HP 60/15
TYPE PM
PHASE/HERTZ 3/60

VOLTS 460
AMPS 69.6/24.1
DUTY CONT
AMB °C/INSUL 40/F

NEMA DESIGN B
CODE LETTER H
ENCLOSURE TEFC
E/S 591538

TEST S.O. TYPICAL DATA
TEST DATE ---
STATOR RES. @ 25 °C .132/.529
OHMS (BETWEEN LINES)



AMPERES SHOWN FOR 460 VOLT CONNECTION, IF OTHER VOLTAGE CONNECTIONS ARE AVAILABLE, THE AMPERES WILL VARY INVERSELY WITH THE RATED VOLTAGE.



DR. BY J.J.HARRISON
CK. BY G.R.WEBB
APP. BY W.L.SMITH
DATE 06/06/02

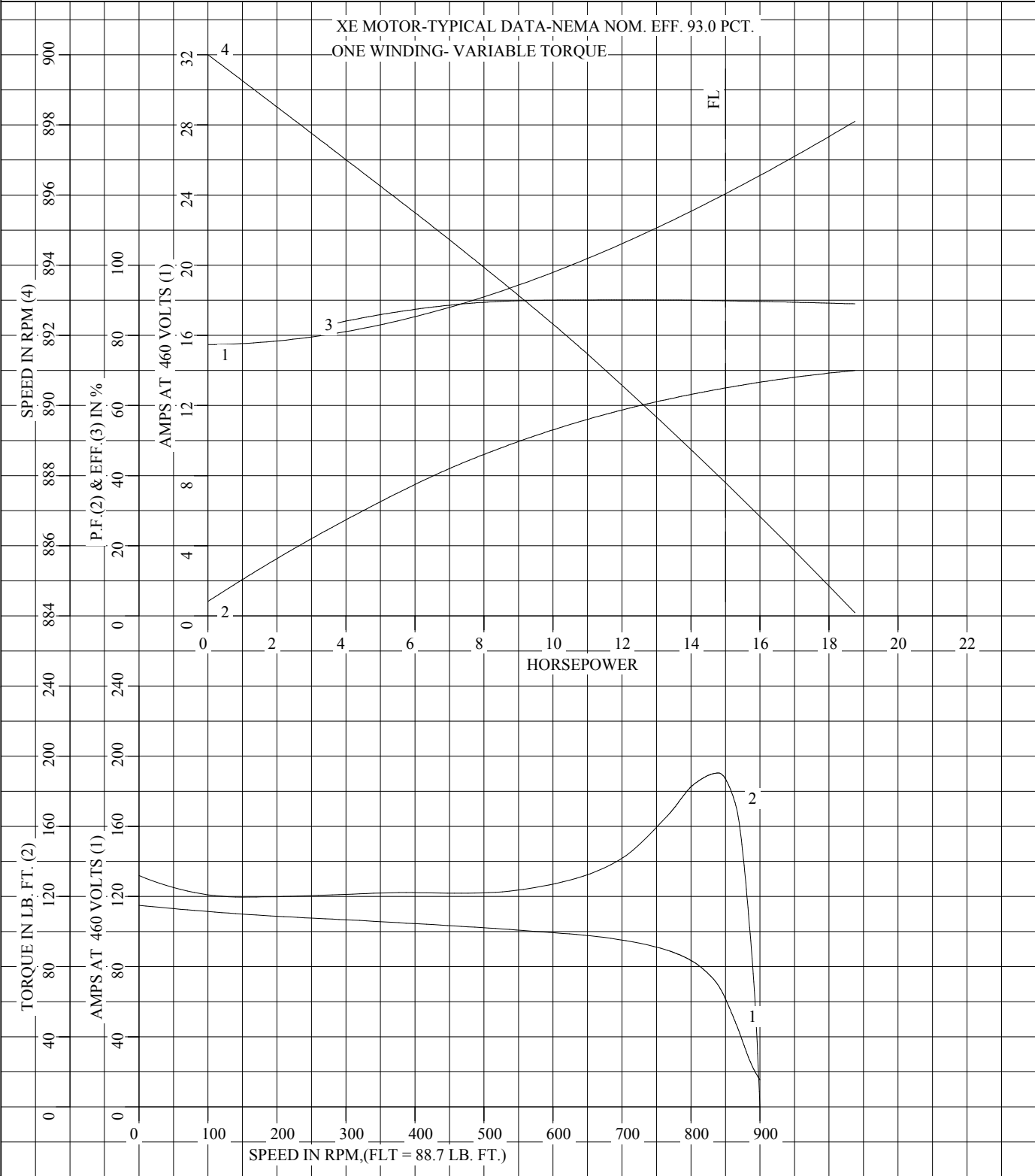
**A-C MOTOR
PERFORMANCE
CURVES** A36WG0808-R001
SH 1 OF 2
ISSUE DATE 01/07/11

FRAME 364T
HP 60/15
TYPE PM
PHASE/HERTZ 3/60

VOLTS 460
AMPS 69.6/24.1
DUTY CONT
AMB °C/INSUL 40/F

NEMA DESIGN B
CODE LETTER H
ENCLOSURE TEFC
E/S 591538

TEST S.O. TYPICAL DATA
TEST DATE ---
STATOR RES. @ 25 °C .132/.529
OHMS (BETWEEN LINES)



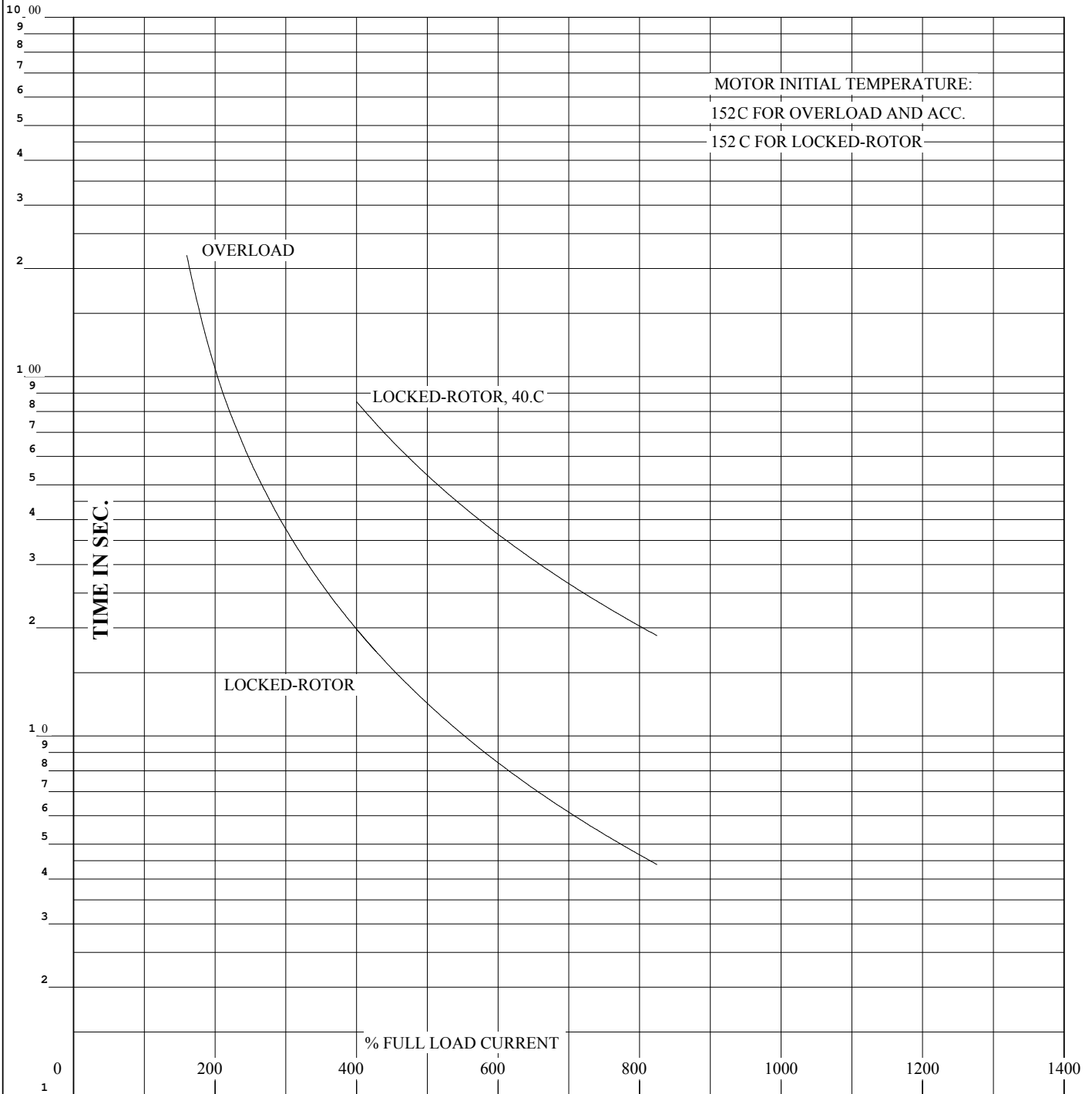
AMPERES SHOWN FOR 460 VOLT CONNECTION, IF OTHER VOLTAGE CONNECTIONS ARE AVAILABLE, THE AMPERES WILL VARY INVERSELY WITH THE RATED VOLTAGE.



DR. BY J.J.HARRISON
CK. BY G.R.WEBB
APP. BY W.L.SMITH
DATE 06/06/02

**A-C MOTOR
PERFORMANCE
CURVES** A36WG0808-R001
SH 2 OF 2
ISSUE DATE 01/07/11

REL. S.O.	RPM 1775/885	S.F. 1.15	ROTOR 418141-31-TE
FRAME 364T	VOLTS 460	NEMA DESIGN B	TEST S.O. TYPICAL DATA
HP 60/15	AMPS 69.6/24.1	CODE LETTER H	TEST DATE ---
TYPE PM	DUTY CONT	ENCLOSURE TEFC	STATOR RES. @ 25 °C .132/.529
PHASE/HERTZ 3/60	AMB °C/INSUL 40/F	E/S 591538	OHMS (BETWEEN LINES)



THERMAL LIMIT CURVE - HIGH SPEED RATING

REMARKS: XE MOTOR-TYPICAL DATA-NEMA NOM. EFF. 93.0 PCT.
ONE WINDING- VARIABLE TORQUE

AMPERES SHOWN FOR 460 VOLT CONNECTION, IF OTHER VOLTAGE CONNECTIONS ARE AVAILABLE, THE AMPERES WILL VARY INVERSELY WITH THE RATED VOLTAGE.



DR. BY	J.J.HARRISON
CK. BY	G.R.WEBB
APP. BY	W.L.SMITH
DATE	06/06/02

**A-C MOTOR
PERFORMANCE
CURVES**

A36WG0808-R001

ISSUE DATE SH 1 OF 2
01/07/11

REL. S.O.

RPM 1775/885

S.F. 1.15

ROTOR 418141-31-TE

FRAME 364T

VOLTS 460

NEMA DESIGN B

TEST S.O. TYPICAL DATA

HP 60/15

AMPS 69.6/24.1

CODE LETTER H

TEST DATE ---

TYPE PM

DUTY CONT

ENCLOSURE TEFC

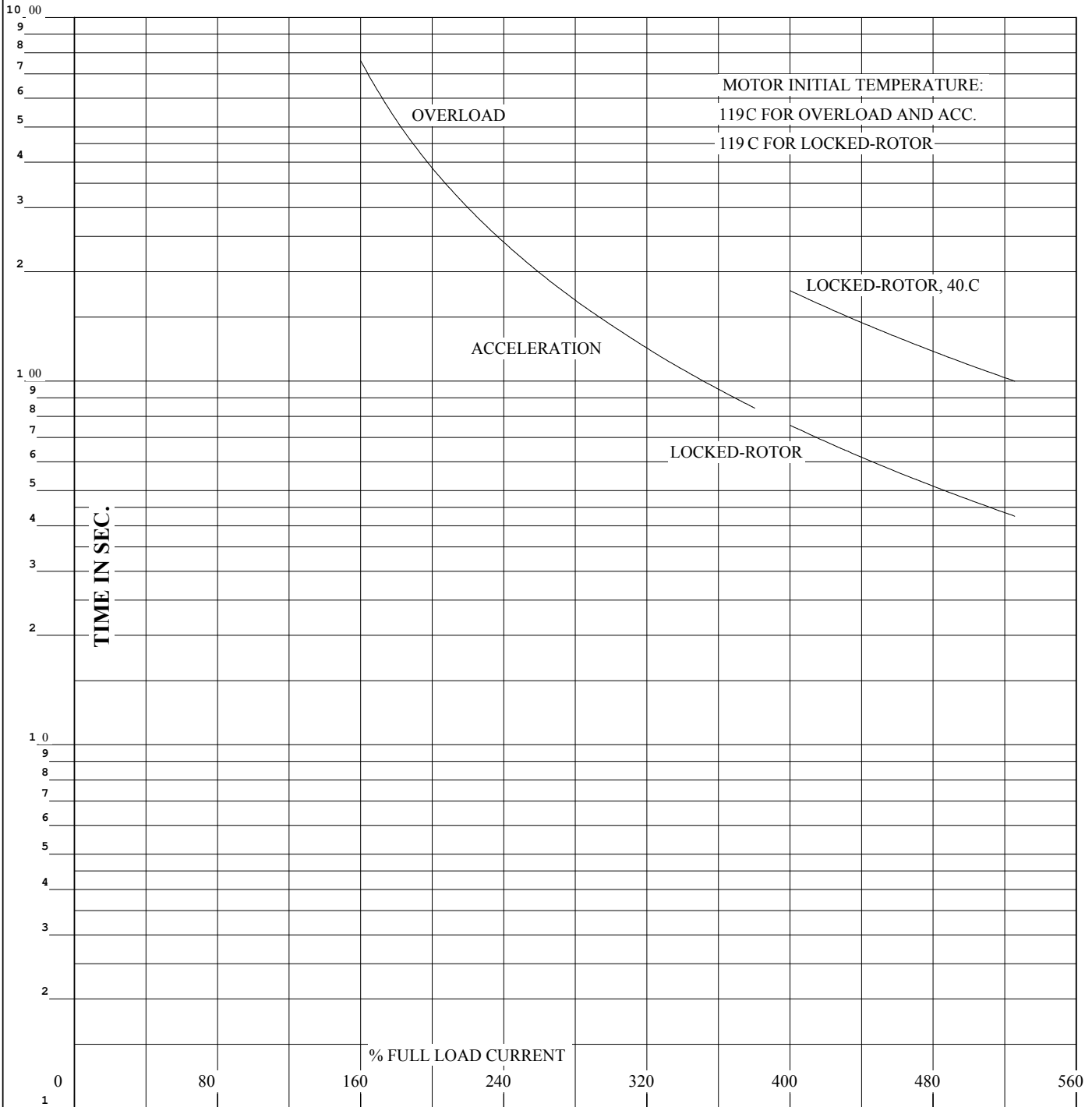
STATOR RES. @ 25 °C .132/.529

PHASE/HERTZ 3/60

AMB °C/INSUL 40/F

E/S 591538

OHMS (BETWEEN LINES)



THERMAL LIMIT CURVE - LOW SPEED RATING

REMARKS: XE MOTOR-TYPICAL DATA-NEMA NOM. EFF. 93.0 PCT.
ONE WINDING- VARIABLE TORQUE

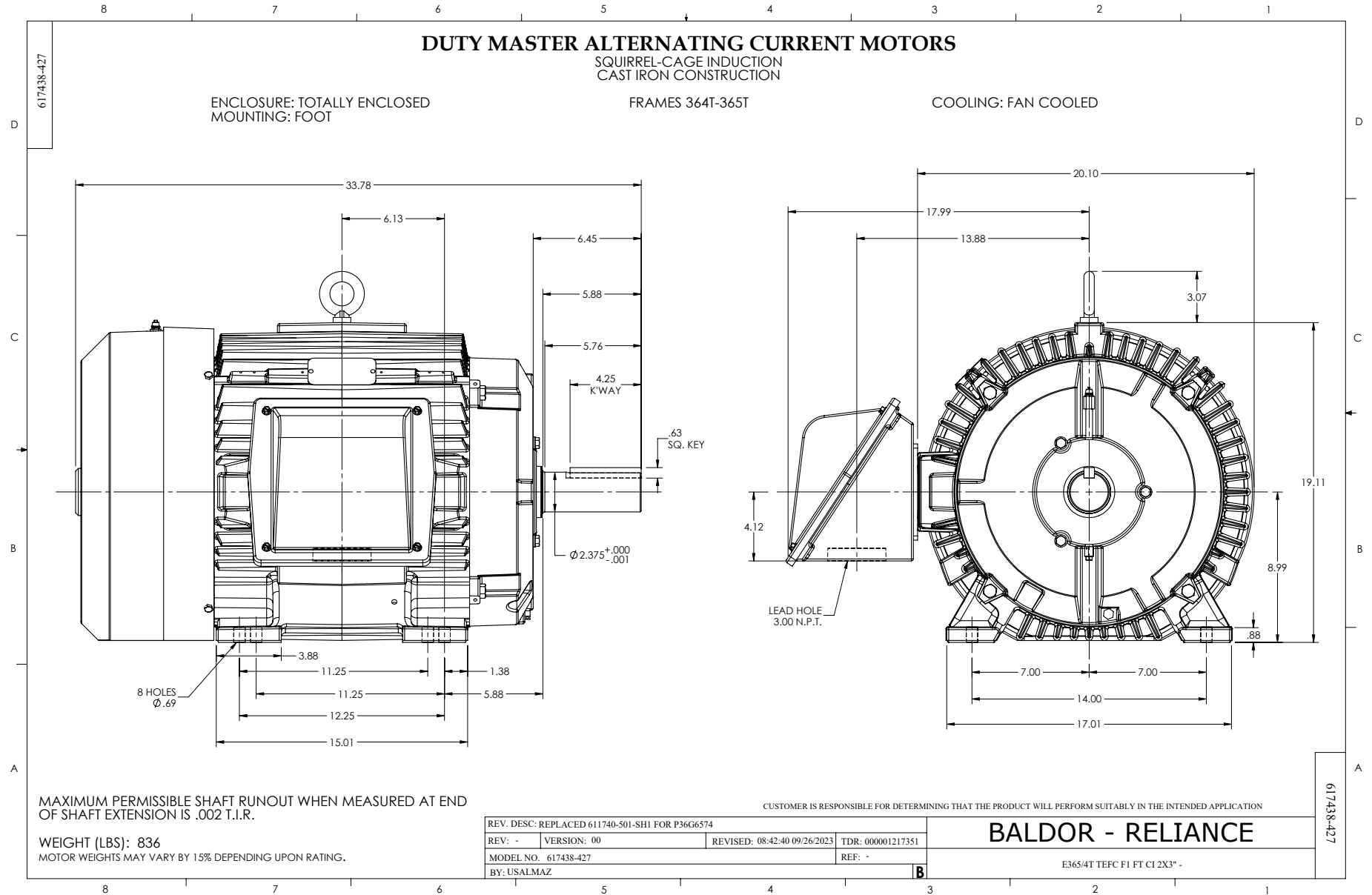
AMPERES SHOWN FOR 460 VOLT CONNECTION, IF OTHER VOLTAGE CONNECTIONS ARE AVAILABLE, THE AMPERES WILL VARY INVERSELY WITH THE RATED VOLTAGE.



DR. BY J.J.HARRISON
CK. BY G.R.WEBB
APP. BY W.L.SMITH
DATE 06/06/02

**A-C MOTOR
PERFORMANCE
CURVES**

A36WG0808-R001
ISSUE DATE SH 2 OF 2
01/07/11

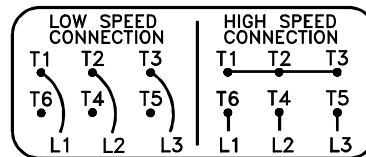
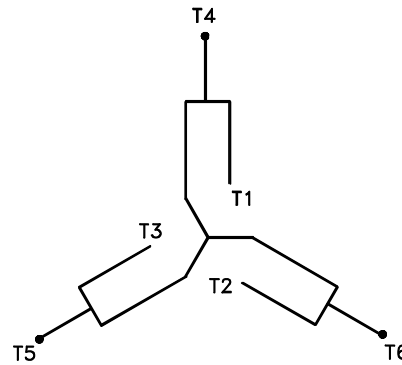


MAXIMUM PERMISSIBLE SHAFT RUNOUT WHEN MEASURED AT END OF SHAFT EXTENSION IS .002 T.I.R.

WEIGHT (LBS): 836
MOTOR WEIGHTS MAY VARY BY 15% DEPENDING UPON RATING.

416820-007

**A-C MOTOR
CONNECTION DIAGRAM**
SINGLE WINDING MULTI-SPEEDS VARIABLE TORQUE



(N. P. 1634-DE)

416820-007

REV. DESC: LOADED TO BUS, C/R 335225		
REV. LTR: -	VERSION: 00	TDR: 000000538207
FILE: \MGA\00000\663	REVISED: 10:52:22 04/30/2010	
MTL: -	BY: RAGRA	

BALDOR

CONN DIAG - SINGLE WINDING - MULTI-SPEEDS - VARIABLE TORQUE
SH 1 of 1