

DUTY MASTER ALTERNATING CURRENT MOTORS

SQUIRREL-CAGE INDUCTION
CAST IRON CONSTRUCTION

ENCLOSURE: TOTALLY ENCLOSED
MOUNTING: FOOT

FRAMES 364T-365T

COOLING: FAN COOLED

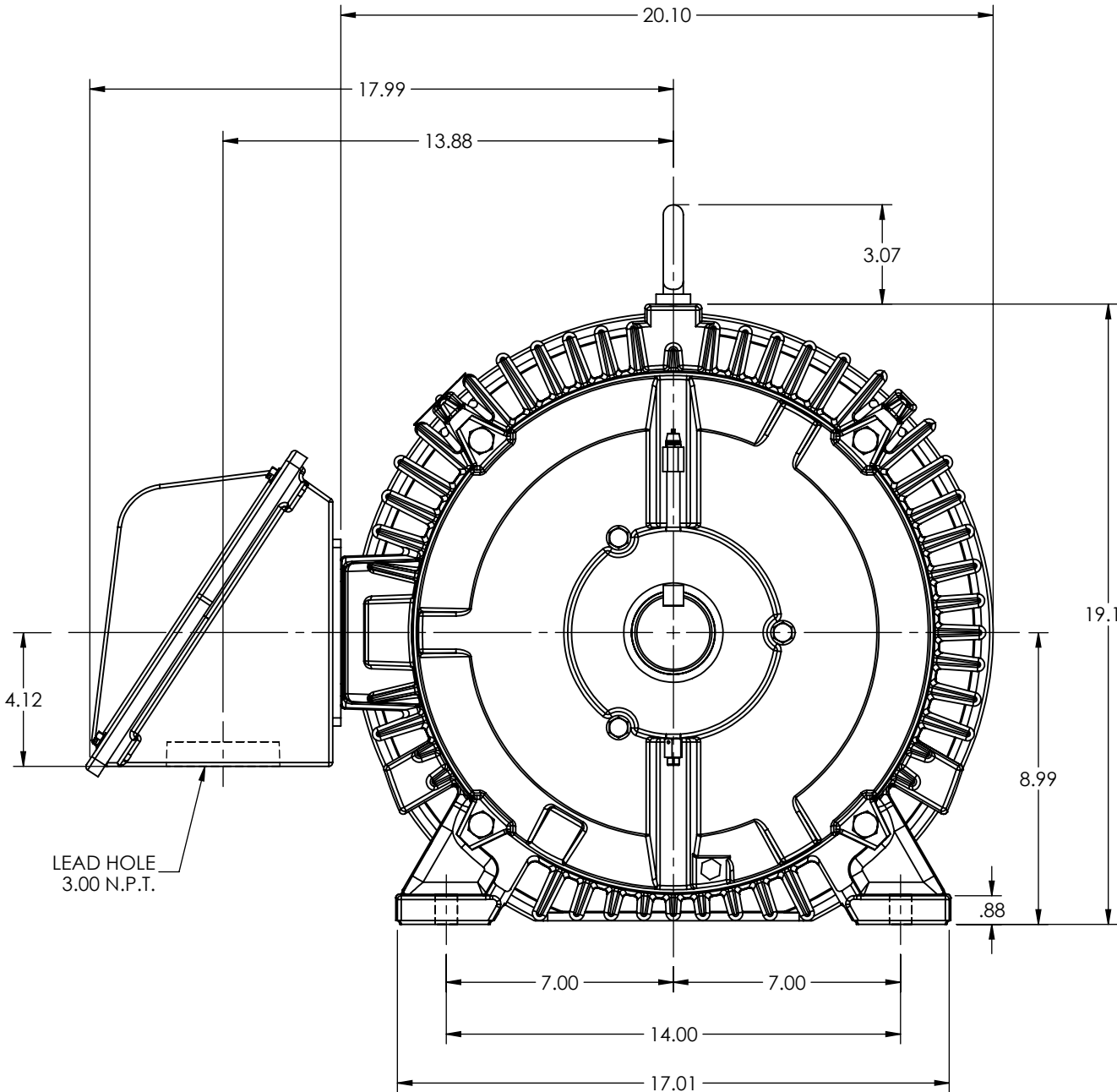
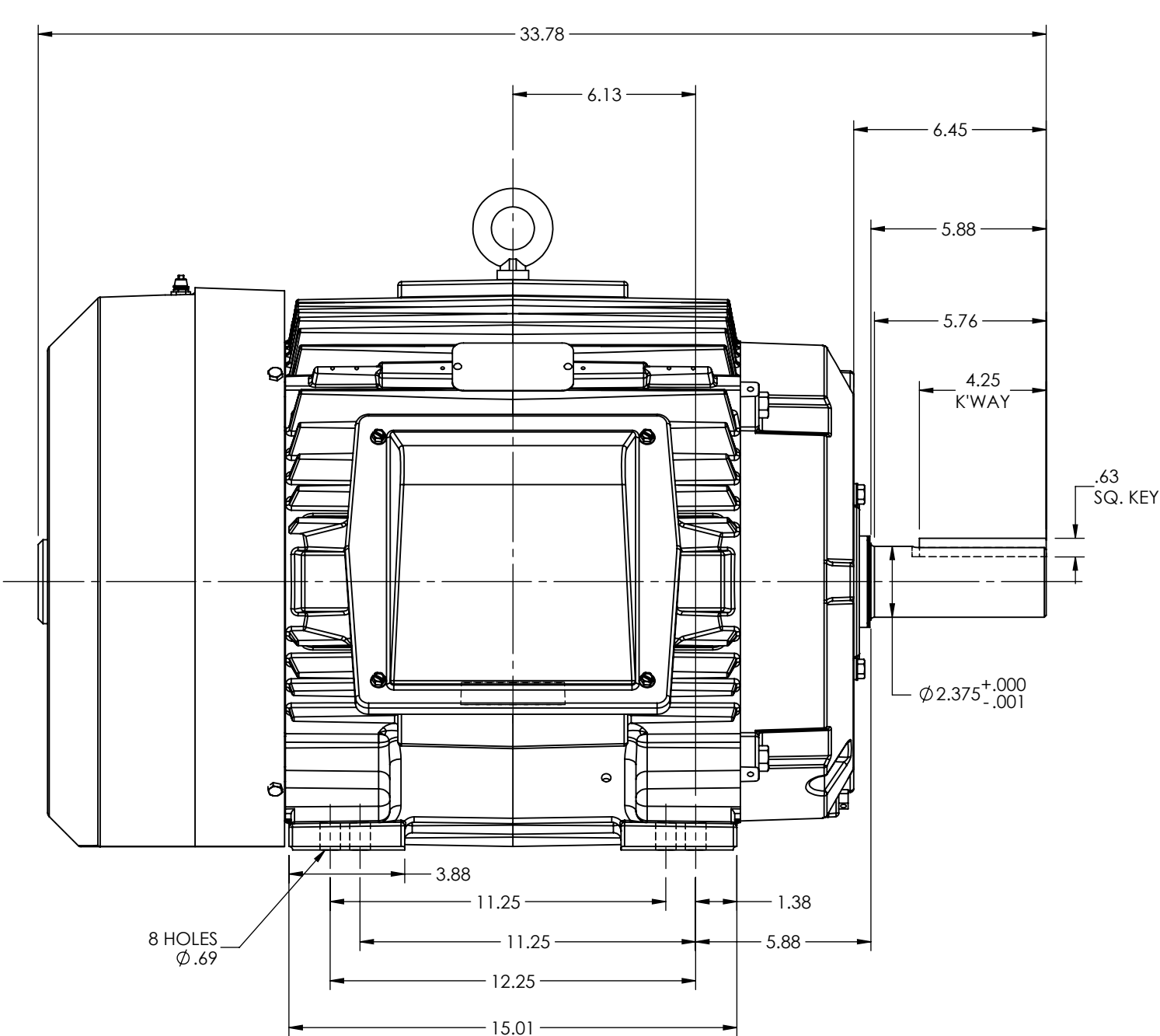
617438-427

D

C

B

A



D

C

B

A

MAXIMUM PERMISSIBLE SHAFT RUNOUT WHEN MEASURED AT END
OF SHAFT EXTENSION IS .002 T.I.R.

WEIGHT (LBS): 836
MOTOR WEIGHTS MAY VARY BY 15% DEPENDING UPON RATING.

CUSTOMER IS RESPONSIBLE FOR DETERMINING THAT THE PRODUCT WILL PERFORM SUITABLY IN THE INTENDED APPLICATION

REV. DESC: REPLACED 611740-501-SH1 FOR P36G6574			
REV: -	VERSION: 00	REVISED: 08:42:40 09/26/2023	TDR: 000001217351
MODEL NO. 617438-427			REF: -
BY: USALMAZ			B

BALDOR - RELIANCE

E365/4T TEFC F1 FT CI 2X3" -

617438-427