

BALDOR • RELIANCE

Customer information packet

CTM1765T

40/10HP, 1775/885RPM, 3PH, 60HZ, 324T, TEFC

Class - None

Division - Not Applicable

Specifications

Enclosure	TEFC
Frame	324T
Frame Material	Iron
Frequency	60.00 Hz
Haz Area Class and Group	None
Haz Area Division	Not Applicable
Motor Letter Type	Three Phase
Output @ Frequency	10.000 HP @ 60 HZ 40.000 HP @ 60 HZ
Phase	3
Synchronous Speed @ Frequency	1800 RPM @ 60 HZ
Voltage @ Frequency	460.0 V @ 60 HZ
Agency Approvals	CSA EEV CSA UR
Ambient Temperature	40 °C
Auxillary Box	No Auxillary Box
Auxillary Box Lead Termination	None
Base Indicator	Rigid
Bearing Grease Type	Polyrex EM (-20F +300F)
Blower	None
Current @ Voltage	48.000 A @ 460.0 V
Design Code	A
Drip Cover	No Drip Cover
Duty Rating	CONT
Electrically Isolated Bearing	Not Electrically Isolated
Feedback Device	NO FEEDBACK
Front Face Code	Standard
Front Shaft Indicator	None
Heater Indicator	No Heater
High Voltage Full Load Amps	18.6 a
Insulation Class	F

Part detail

Revision	V
Type	AC
Mech. spec.	12F707
Base	
Status	PRD/A
Elec. spec.	12WGW968
Layout	12LYF707
Eff. date	09-08-2023
CD Diagram	CD0032
Poles	04/08
Leads	6#8
Proprietary	False
Created date	10-29-2009

Inverter Code	Not Inverter
KVA Code	H
Lifting Lugs	Standard Lifting Lugs
Locked Bearing Indicator	Locked Bearing
Motor Lead Exit	Ko Box
Motor Lead Quantity/Wire Size	6 @ 8 AWG
Motor Lead Termination	Flying Leads
Motor Standards	NEMA
Motor Type	1262M
Mounting Arrangement	F1
Number of Poles	4 8
Overall Length	30.28 IN
Product Family	Super-E Chemical Processing
Pulley End Bearing Type	Ball
Pulley Face Code	Standard
Pulley Shaft Indicator	Standard
Rodent Screen	None
Service Factor	1.15
Shaft Diameter	2.125 IN
Shaft Extension Location	Pulley End
Shaft Ground Indicator	No Shaft Grounding
Shaft Rotation	Reversible
Shaft Slinger Indicator	Shaft Slinger
Speed	1760 rpm 870 rpm
Speed Code	2S-1W-VT
Starting Method	Direct on line
Thermal Device - Bearing	NONE (OLD)
Thermal Device - Winding	None
Vibration Sensor Indicator	No Vibration Sensor
Winding Thermal 1	None
Winding Thermal 2	None

Nameplate

NP2178							
CAT.NO.	CTM1765T						
SPEC.	12F707W968						
HP	40/10						
VOLTS	460						
AMP	48/18.6						
RPM	1760/870						
FRAME	324T	HZ	60	PH	3		
SER.F.	1.15	CODE	H	DES	A	CL	F
NEMA-NOM-EFF		PF					
RATING	40C AMB-CONT						
CC							
DE	6312	ODE	6312				
ENCL	TEFC	SN					

AC Induction Motor Performance Data

Record # 3275

Typical performance - not guaranteed values

Winding: 12WGW968-R001		Type: 1262M		Enclosure: TEFC	
Nameplate Data			460 V, 60 Hz: High Speed Connection		
Rated Output (HP)	40/10	Full Load Torque	119 LB-FT		
Volts	460	Start Configuration	direct on line		
Full Load Amps	48/18.6	Breakdown Torque	382 LB-FT		
R.P.M.	1760/870	Pull-up Torque	147 LB-FT		
Hz	60 Phase	3	Locked-rotor Torque	196 LB-FT	
NEMA Design Code	B KVA Code	H	Starting Current	337 A	
Service Factor (S.F.)		1.15	No-load Current	16.2 A	
NEMA Nom. Eff.	0 Power Factor	0	Line-line Res. @ 25°C	0.178 Ω	
Rating - Duty		40C AMB-CONT	Temp. Rise @ Rated Load	61°C	
S.F. Amps			Temp. Rise @ S.F. Load	69°C	

Load Characteristics 460 V, 60 Hz, 40 HP

% of Rated Load	25	50	75	100	125	150	S.F.
Power Factor	58	76	83	86	87	87	87
Efficiency	80	87.8	90.3	91.1	91.3	90.8	91.2
Speed	1795	1788	1784	1779	1775	1769	1777
Line amperes	20.6	28.5	37.9	48.2	59.4	71.3	54.9

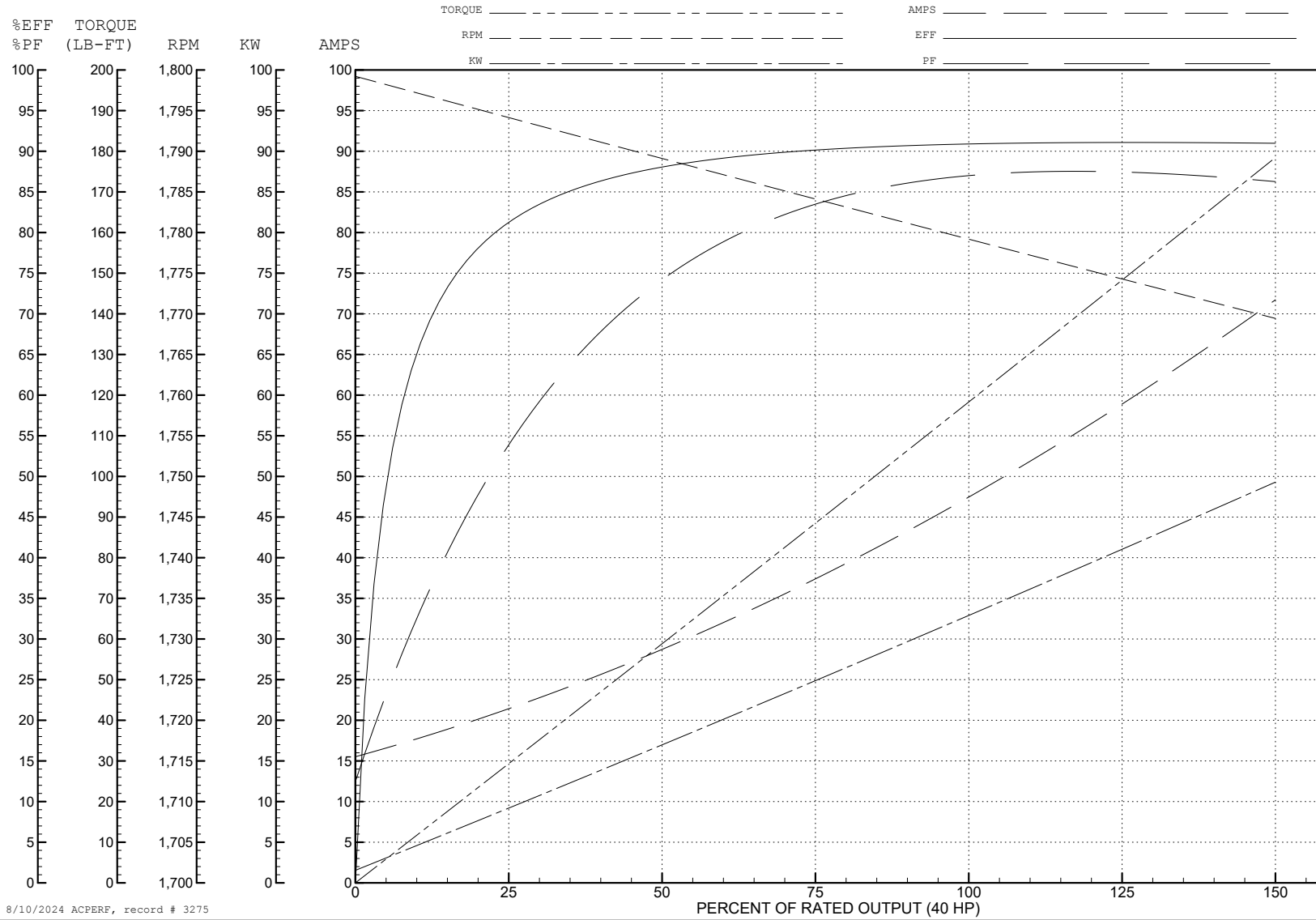
ABB Motors and Mechanical Inc.

WINDING # 12WGW968

Typical performance - not guaranteed values.

40 HP 3 PH 60 HZ 1779 RPM 460 V 1262M

TORQUES (LB-FT): PO=382 PU=147 LR=196 LRA=337



8/10/2024 ACPERF, record # 3275

AC Induction Motor Performance Data

Record # 3276

Typical performance - not guaranteed values

Winding: 12WGW968-R001		Type: 1262M	Enclosure: TEFC		
Nameplate Data			460 V, 60 Hz: Low Speed Connection		
Rated Output (HP)	40/10	Full Load Torque	60 LB-FT		
Volts	460	Start Configuration	direct on line		
Full Load Amps	48/18.6	Breakdown Torque	169 LB-FT		
R.P.M.	1760/870	Pull-up Torque	61 LB-FT		
Hz	60 Phase	3	Locked-rotor Torque	71 LB-FT	
NEMA Design Code	B	KVA Code	H	Starting Current	79 A
Service Factor (S.F.)	1.15		No-load Current	12.2 A	
NEMA Nom. Eff.	0	Power Factor	0	Line-line Res. @ 25°C	0.682 Ω
Rating - Duty	40C AMB-CONT		Temp. Rise @ Rated Load	37°C	
S.F. Amps			Temp. Rise @ S.F. Load	42°C	

Load Characteristics 460 V, 60 Hz, 10 HP

% of Rated Load	25	50	75	100	125	150	S.F.
Power Factor	26	40	51	58	63	65	61
Efficiency	72.4	82.8	86.5	87.7	88.1	87.7	87.9
Speed	896	894	891	889	886	882	887
Line amperes	12.9	14.3	16.2	18.6	21.5	24.8	20.34

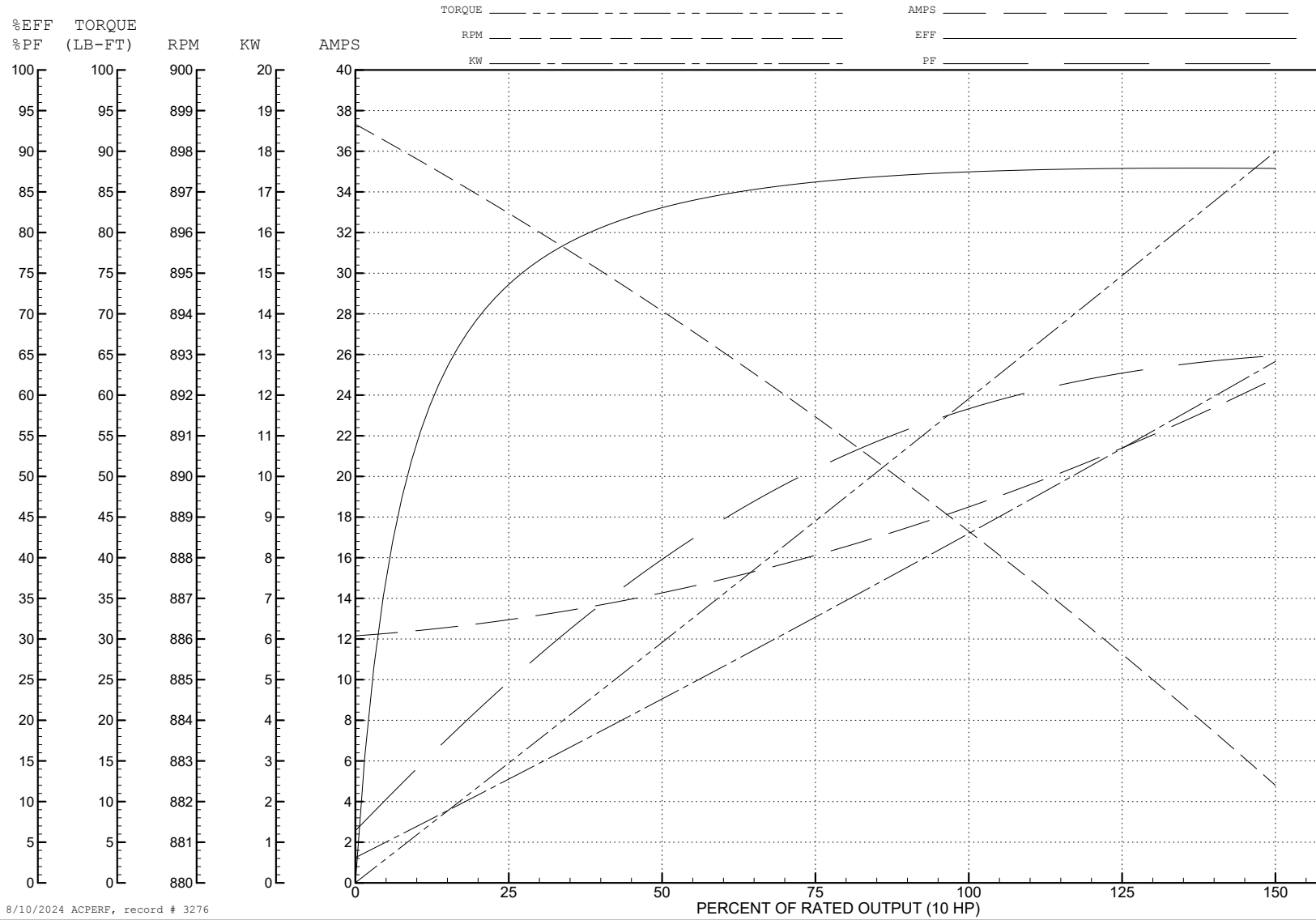
ABB Motors and Mechanical Inc.

WINDING # 12WGW968

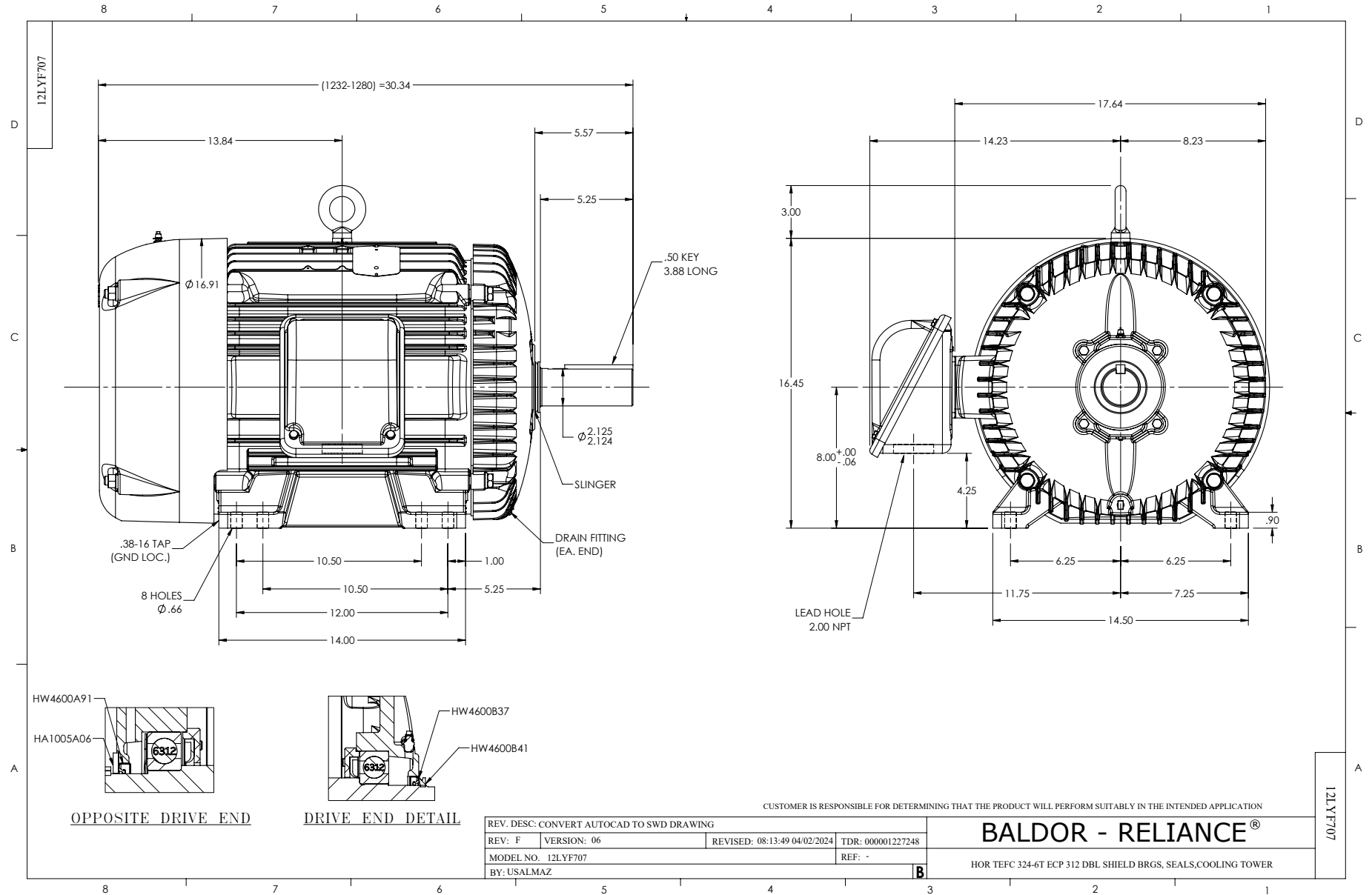
10 HP 3 PH 60 HZ 889 RPM 460 V 1262M

Typical performance - not guaranteed values.

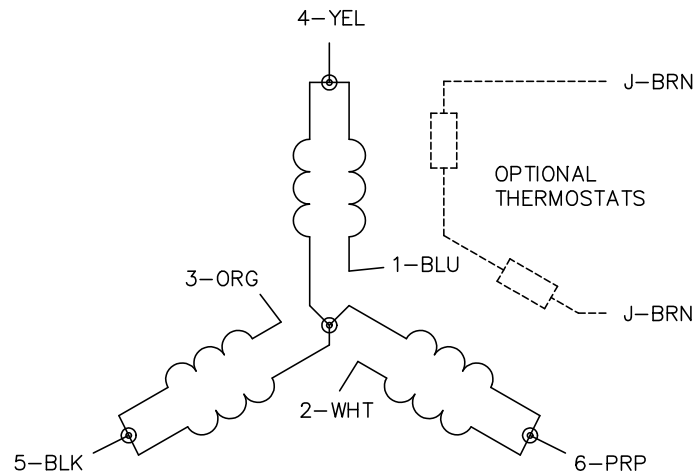
TORQUES (LB-FT): PO=169 PU=61 LR=71 LRA=79



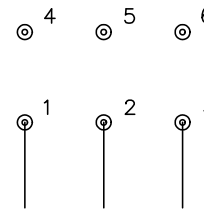
8/10/2024 ACPERF, record # 3276



CD0032

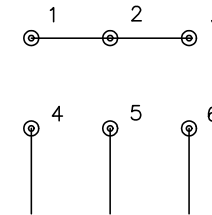


LOW SPEED
(1Y)



LINE

HIGH SPEED
(2Y)



LINE

NOTES:

1. INTERCHANGE ANY TWO LINE LEADS TO REVERSE ROTATION.
2. OPTIONAL THERMOSTATS ARE PROVIDED WHEN SPECIFIED.
3. ACTUAL NUMBER OF INTERNAL PARALLEL CIRCUITS MAY BE A MULTIPLE OF THOSE SHOWN ABOVE.
4. LEAD COLORS ARE OPTIONAL. LEADS MUST ALWAYS BE NUMBERED AS SHOWN.

REV. DESC: REVISE TO SHOW OPTIONAL COLORS			
REV. LTR: E	BY: JLP	REVISED: 01/22/99 8:27	TDR: 0171435
CD0032		FILE: AAA00005145	MDL: -
		MTL: -	

BALDOR ELECTRIC Co.

3PH, SV, 6 LEADS, 2-SPEED 1-WINDING VARIABLE TORQUE

CD0032