

ABB BALDOR RELIANCE III

Customer information packet

CTM1762T

20HP, 1770RPM, 3PH, 60HZ, 256T, TEFC, FOOT,

Class - None

Division - Not Applicable

Specifications

Enclosure	TEFC
Frame	256T
Frame Material	Iron
Frequency	60.00 Hz
Haz Area Class and Group	None
Haz Area Division	Not Applicable
Motor Letter Type	Three Phase
Output @ Frequency	5.000 HP @ 60 HZ 20.000 HP @ 60 HZ
Phase	3
Synchronous Speed @ Frequency	1800 RPM @ 60 HZ
Voltage @ Frequency	460.0 V @ 60 HZ
Agency Approvals	UR CSA
Ambient Temperature	40 °C
Auxiliary Box	NO AUXILLARY BOX
Auxiliary Box Lead Termination	None
Base Indicator	Rigid
Bearing Grease Type	Polyrex EM (-20F +300F)
Blower	None
Current @ Voltage	23.600 A @ 460.0 V
Design Code	B
Drip Cover	No Drip Cover
Duty Rating	CONT
Electrically Isolated Bearing	Not Electrically Isolated
Feedback Device	NO FEEDBACK
Front Face Code	Standard
Front Shaft Indicator	None
Heater Indicator	No Heater
High Voltage Full Load Amps	9.3 a
Insulation Class	F
Inverter Code	Not Inverter

Part Detail

Revision	U
Type	AC
Mech. spec.	09J957
Base	
Status	PRD/A
Elec. spec.	09WGX186
Layout	09LYJ957
Eff. date	09-16-2025
CD Diagram	CD0032
Poles	04/08
Leads	6#12
Proprietary	False
Created date	08-15-2014

KVA Code	H
Lifting Lugs	Standard Lifting Lugs
Locked Bearing Indicator	Locked Bearing
Motor Lead Exit	Ko Box
Motor Lead Quantity/Wire Size	6 @ 12 AWG
Motor Lead Termination	Flying Leads
Motor Standards	NEMA
Motor Type	0944M
Mounting Arrangement	F1
Number of Poles	4 8
Overall Length	24.78 IN
Product Family	Chemical Processing (Not DC)
Pulley End Bearing Type	Ball
Pulley Face Code	Standard
Pulley Shaft Indicator	Standard
Rodent Screen	None
Service Factor	1.15
Shaft Diameter	1.625 IN
Shaft Extension Location	Pulley End
Shaft Ground Indicator	No Shaft Grounding
Shaft Rotation	Reversible
Shaft Slinger Indicator	Shaft Slinger
Speed	1760 rpm 875 rpm
Speed Code	2S-1W-VT
Starting Method	Direct on line
Thermal Device - Bearing	None
Thermal Device - Winding	None
Vibration Sensor Indicator	No Vibration Sensor
Winding Thermal 1	None
Winding Thermal 2	None

Nameplate

NP1258									
CAT.NO.	CTM1762T								
SPEC.	09J957X186G1								
HP	20/5								
VOLTS	460								
AMP	23.6/9.3								
RPM	1760/875								
FRAME	256T	HZ	60	PH	3				
SER.F.	1.15	CODE	H	DES	B	CL	F		
NEMA-NOM-EFF		PF							
RATING	40C AMB-CONT								
CC									
DE	6309	ODE	6309						
ENCL	TEFC	SN							

NP0090	
FRONT	6309
PULLEY	6309
LUBRICATE WITH	
GREASE	POLYREX EM

ABB Motors and Mechanical Inc.

WINDING # 09WGX186

Typical performance - not guaranteed values.

20 HP 3 PH 60 HZ 1762 RPM 460 V 0944M

TORQUES (LB-FT): PO=183 PU=69 LR=101 LRA=160

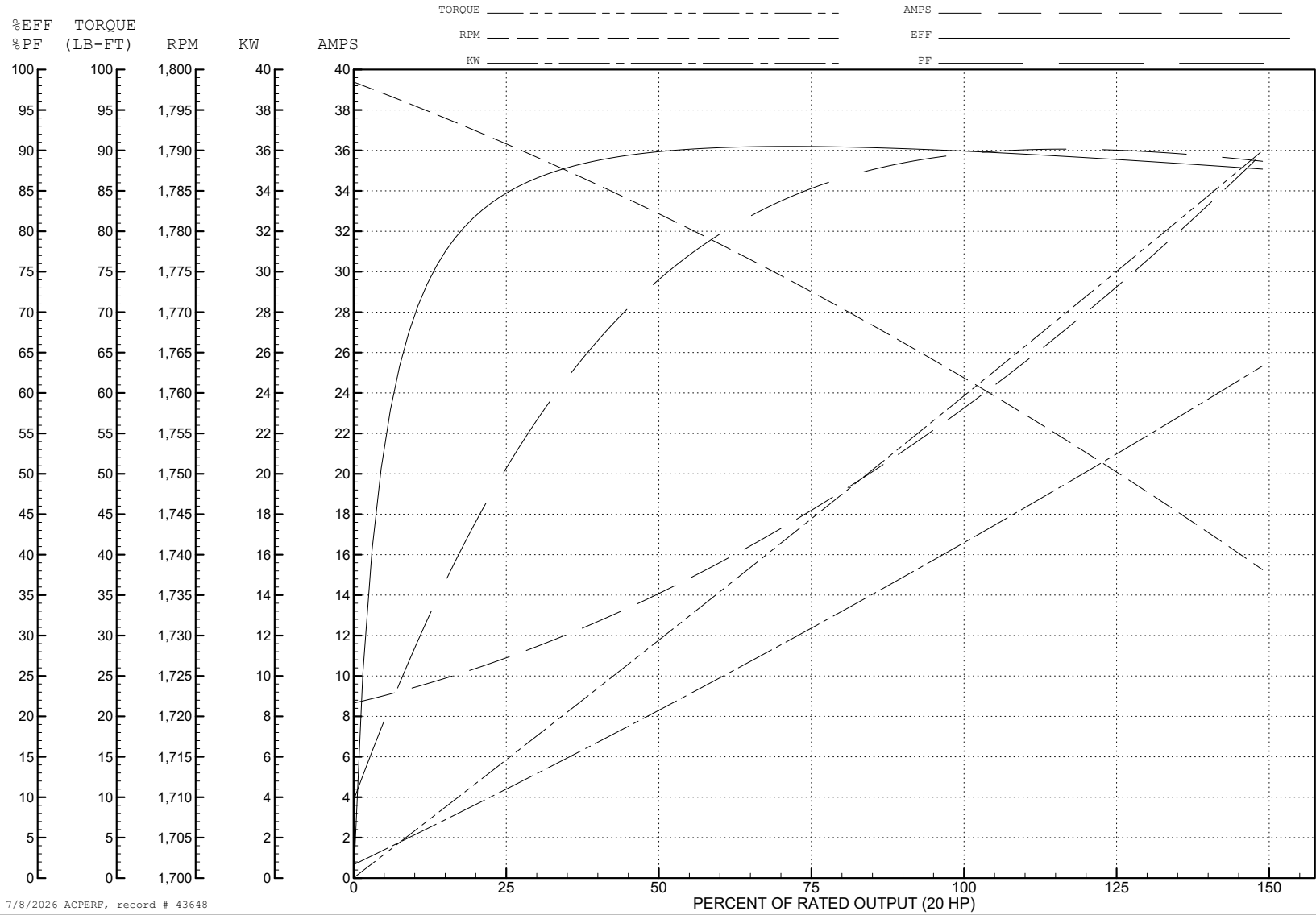


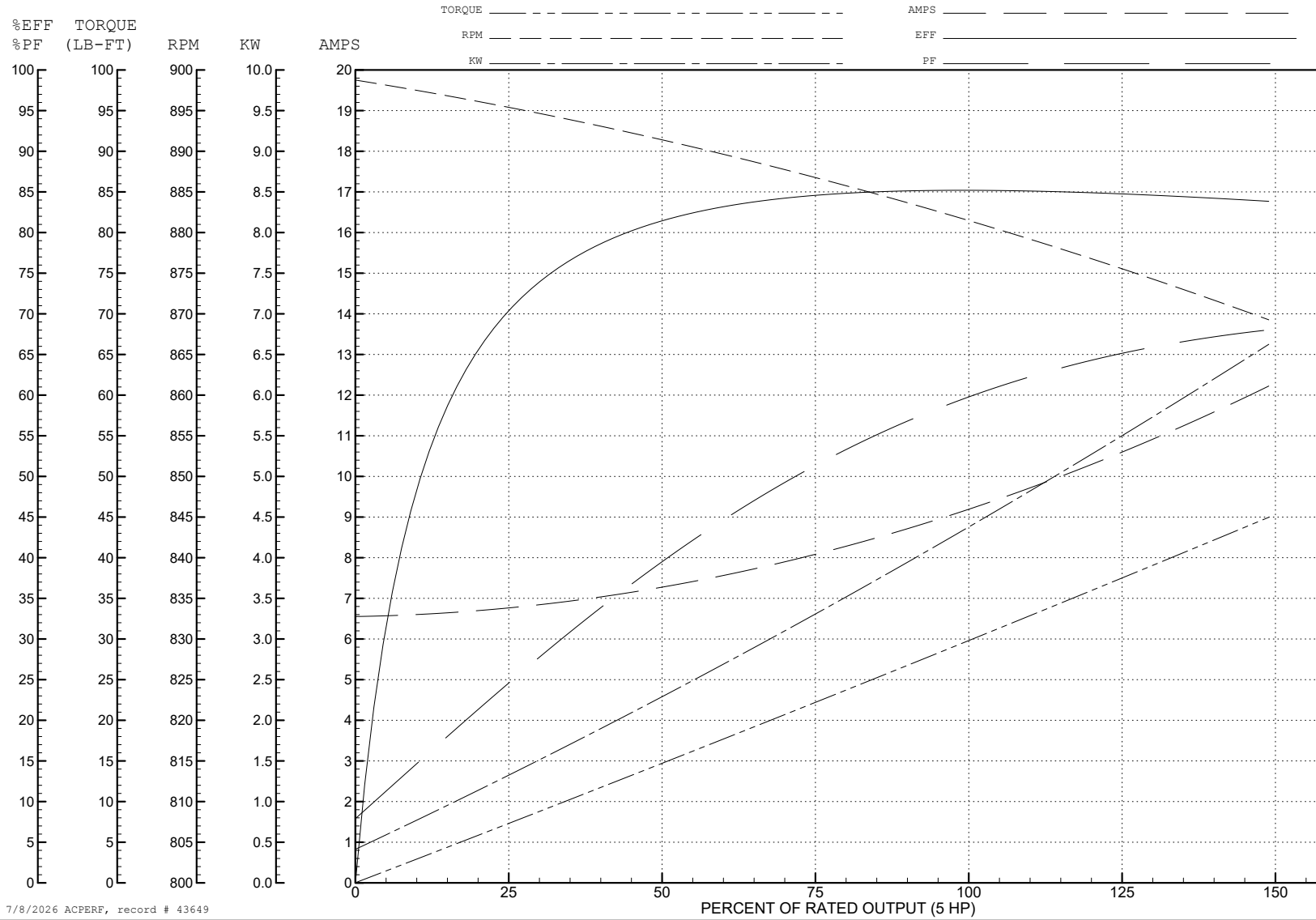
ABB Motors and Mechanical Inc.

WINDING # 09WGX186

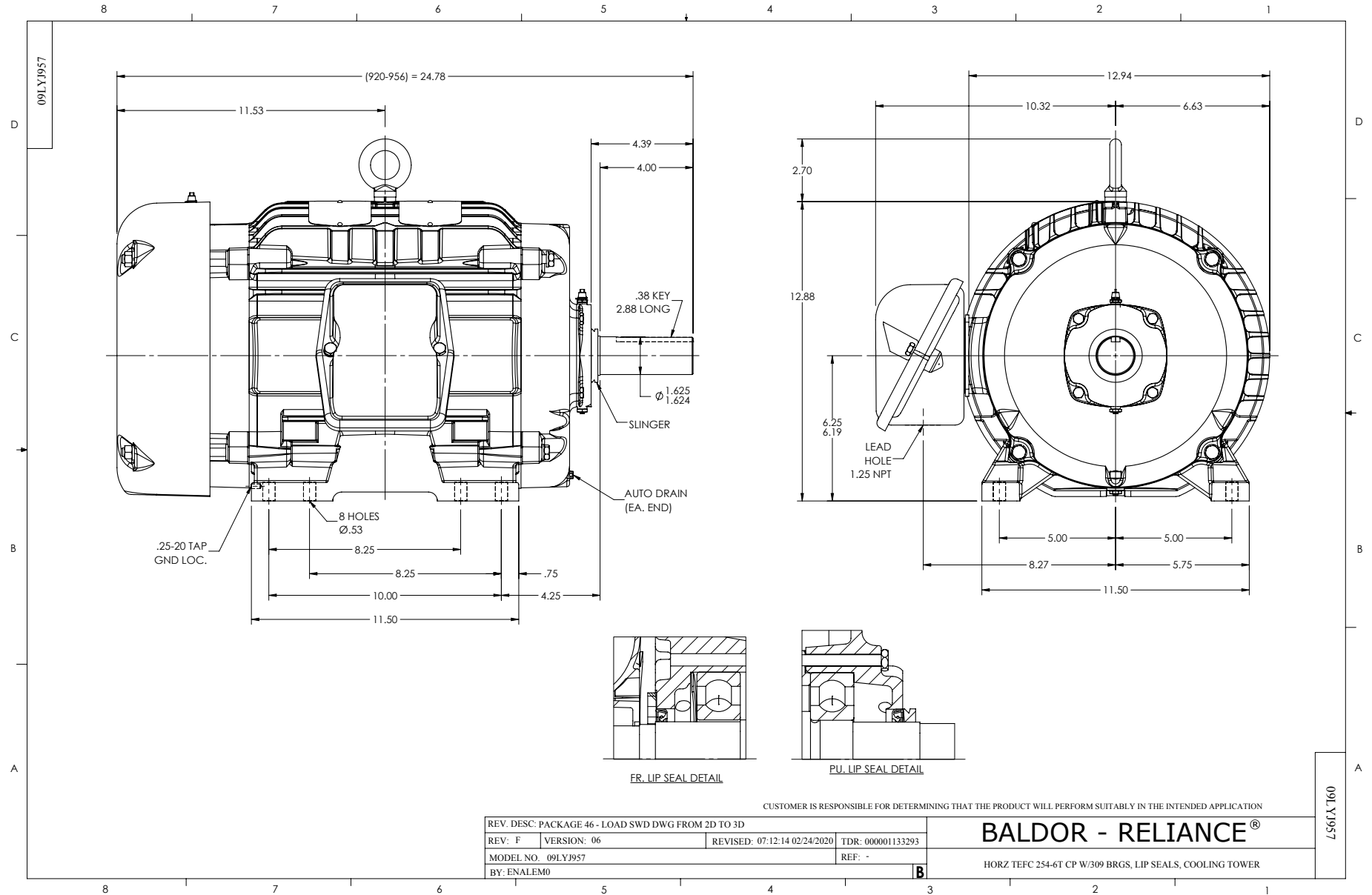
Typical performance - not guaranteed values.

5 HP 3 PH 60 HZ 881 RPM 460 V 0944M

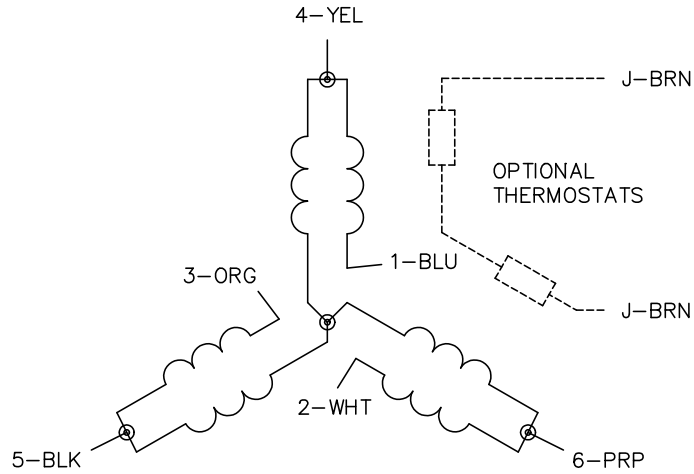
TORQUES (LB-FT): PO=70 PU=30 LR=40 LRA=45



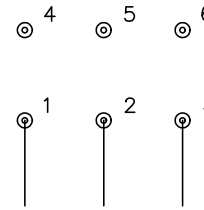
7/8/2026 ACPERF, record # 43649



CD0032

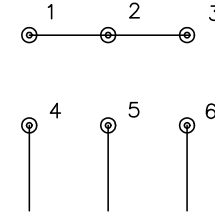


LOW SPEED
(1Y)



LINE

HIGH SPEED
(2Y)



LINE

NOTES:

1. INTERCHANGE ANY TWO LINE LEADS TO REVERSE ROTATION.
2. OPTIONAL THERMOSTATS ARE PROVIDED WHEN SPECIFIED.
3. ACTUAL NUMBER OF INTERNAL PARALLEL CIRCUITS MAY BE A MULTIPLE OF THOSE SHOWN ABOVE.
4. LEAD COLORS ARE OPTIONAL. LEADS MUST ALWAYS BE NUMBERED AS SHOWN.

CD0032

REV. DESC: REVISE TO SHOW OPTIONAL COLORS

REV. LTR: E

BY: JLP

REVISED: 01/22/99 8:27

TDR: 0171435

CD0032

FILE: AAA00005145

MDL: -

MTL: -

BALDOR ELECTRIC Co.

3PH, SV, 6 LEADS, 2-SPEED 1-WINDING VARIABLE TORQUE