

BALDOR • RELIANCE

Customer information packet

CTM1760T

10/2.5HP, 1760/875RPM, 3PH, 60HZ, 0748M, N

Class - None

Division - Not Applicable

Specifications

Enclosure	TEFC
Frame	213T
Frame Material	Iron
Frequency	60.00 Hz
Haz Area Class and Group	None
Haz Area Division	Not Applicable
Motor Letter Type	Three Phase
Output @ Frequency	2.500 HP @ 60 HZ 10.000 HP @ 60 HZ
Phase	3
Synchronous Speed @ Frequency	900 RPM @ 60 HZ
Voltage @ Frequency	460.0 V @ 60 HZ
Agency Approvals	UR CSA
Ambient Temperature	40 °C
Auxillary Box	No Auxillary Box
Auxillary Box Lead Termination	None
Base Indicator	Rigid
Bearing Grease Type	Polyrex EM (-20F +300F)
Blower	None
Current @ Voltage	12.800 A @ 460.0 V
Design Code	B
Drip Cover	No Drip Cover
Duty Rating	CONT
Electrically Isolated Bearing	Not Electrically Isolated
Feedback Device	NO FEEDBACK
Front Shaft Indicator	None
Heater Indicator	No Heater
High Voltage Full Load Amps	4.8 a
Insulation Class	F
Inverter Code	Not Inverter
KVA Code	K

Part detail

Revision	A
Type	AC
Mech. spec.	07N044
Base	
Status	PRD/A
Elec. spec.	07WGZ112
Layout	07LYN044
Eff. date	03-19-2024
CD Diagram	CD0032
Poles	04/08
Leads	6#14
Proprietary	False
Created date	12-14-2020

Lifting Lugs	Standard Lifting Lugs
Locked Bearing Indicator	No Locked Bearing
Motor Lead Quantity/Wire Size	6 @ 14 AWG
Motor Lead Termination	Flying Leads
Motor Standards	NEMA
Motor Type	0748M
Mounting Arrangement	F1
Number of Poles	4 8
Overall Length	19.32 IN
Product Family	Chemical Processing (Not DC)
Pulley End Bearing Type	Ball
Pulley Face Code	Standard
Pulley Shaft Indicator	Standard
Rodent Screen	None
Service Factor	1.15
Shaft Diameter	1.375 IN
Shaft Ground Indicator	No Shaft Grounding
Shaft Rotation	Reversible
Shaft Slinger Indicator	Shaft Slinger
Speed	1760 rpm 875 rpm
Speed Code	2S-1W-VT
Starting Method	Direct on line
Thermal Device - Bearing	None
Thermal Device - Winding	None
Vibration Sensor Indicator	No Vibration Sensor
Winding Thermal 1	None
Winding Thermal 2	None

Nameplate

NP2134									
CAT.NO.	CTM1760T								
SPEC.	07N044Z112G1								
HP	10/2.5								
VOLTS	460								
AMP	12.8/4.8								
RPM	1760/875								
FRAME	213T	HZ	60	PH	3				
SER.F.	1.15	CODE	K	DES	B	CL	F		
NEMA-NOM-EFF		PF							
RATING	40C AMB-CONT								
CC									
DE	6307	ODE	6206						
ENCL	TEFC	SN							
	SFA 14.7/5.4								

AC Induction Motor Performance Data

Record # 85819

Preliminary Data Sheet

Winding: 07WGZ112-R001		Type: 0748M	Enclosure: TEFC
Nameplate Data		460 V, 60 Hz: High Speed Connection	
Rated Output (HP)	10/2.5	Full Load Torque	29.87 LB-FT
Volts	460	Start Configuration	direct on line
Full Load Amps	12.8/4.8	Breakdown Torque	104 LB-FT
R.P.M.	1760/875	Pull-up Torque	40.34 LB-FT
Hz	60 Phase 3	Locked-rotor Torque	91.1 LB-FT
NEMA Design Code	B KVA Code K	Starting Current	108 A
Service Factor (S.F.)	1.15	No-load Current	4.74 A
NEMA Nom. Eff.	0 Power Factor 0	Line-line Res. @ 25°C	1.17 Ω
Rating - Duty	40C AMB-CONT	Temp. Rise @ Rated Load	85°C
S.F. Amps	14.7/5.4	Temp. Rise @ S.F. Load	104°C
		Locked-rotor Power Factor	46
		Rotor inertia	1.19 lb-ft ²

Load Characteristics 460 V, 60 Hz, 10 HP

% of Rated Load	25	50	75	100	125	150	S.F.
Power Factor	48	70	78	83	84	84	84
Efficiency	85.4	89.4	89.4	88.1	86.3	83.9	87
Speed	1791	1781	1771	1759	1747	1731	1752
Line amperes	5.56	7.51	9.89	12.83	16.03	19.93	14.8

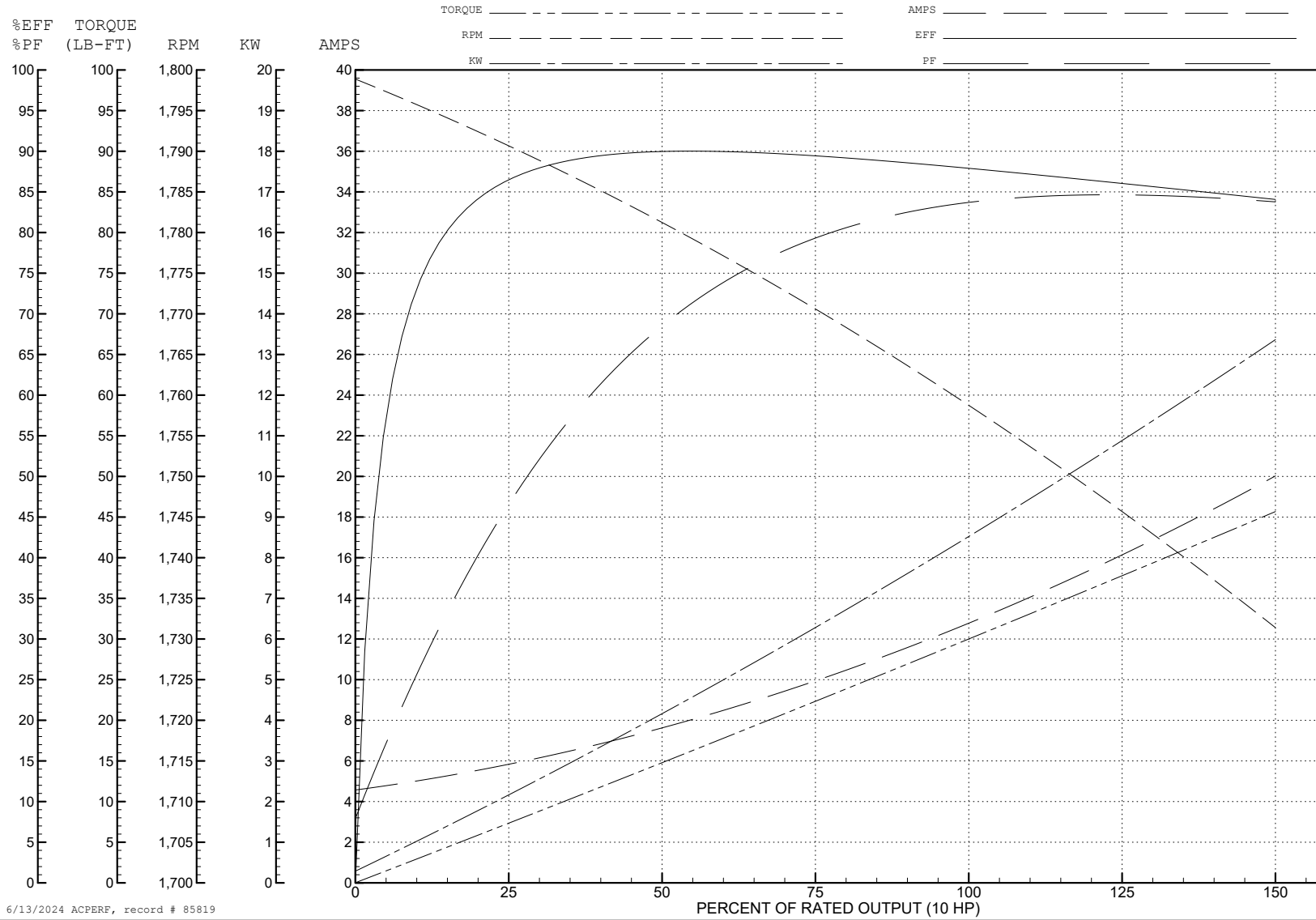
ABB Motors and Mechanical Inc.

WINDING # 07WGZ112

Typical performance - not guaranteed values.

10 HP 3 PH 60 HZ 1759 RPM 460 V 0748M

TORQUES (LB-FT): PO=104 PU=40.34 LR=91.1 LRA=108



6/13/2024 ACPERF, record # 85819

AC Induction Motor Performance Data

Record # 85820

Preliminary Data Sheet

Winding: 07WGZ112-R001		Type: 0748M	Enclosure: TEFC
Nameplate Data		460 V, 60 Hz: Low Speed Connection	
Rated Output (HP)	10/2.5	Full Load Torque	14.9 LB-FT
Volts	460	Start Configuration	direct on line
Full Load Amps	12.8/4.8	Breakdown Torque	36.1 LB-FT
R.P.M.	1760/875	Pull-up Torque	17.3 LB-FT
Hz	60 Phase 3	Locked-rotor Torque	27.1 LB-FT
NEMA Design Code	B KVA Code K	Starting Current	18.6 A
Service Factor (S.F.)	1.15	No-load Current	3.36 A
NEMA Nom. Eff.	0 Power Factor 0	Line-line Res. @ 25°C	4.68 Ω
Rating - Duty	40C AMB-CONT	Temp. Rise @ Rated Load	43°C
S.F. Amps	14.7/5.4	Temp. Rise @ S.F. Load	51°C
		Locked-rotor Power Factor	46
		Rotor inertia	1.19 lb-ft ²

Load Characteristics 460 V, 60 Hz, 2.5 HP

% of Rated Load	25	50	75	100	125	150	S.F.
Power Factor	23	38	50	59	65	68	63
Efficiency	74	83.1	85.9	86.7	86.5	85.7	86.6
Speed	895.4	891.1	886.4	881.4	875.7	869.1	878
Line amperes	3.45	3.69	4.07	4.59	5.22	5.99	4.97

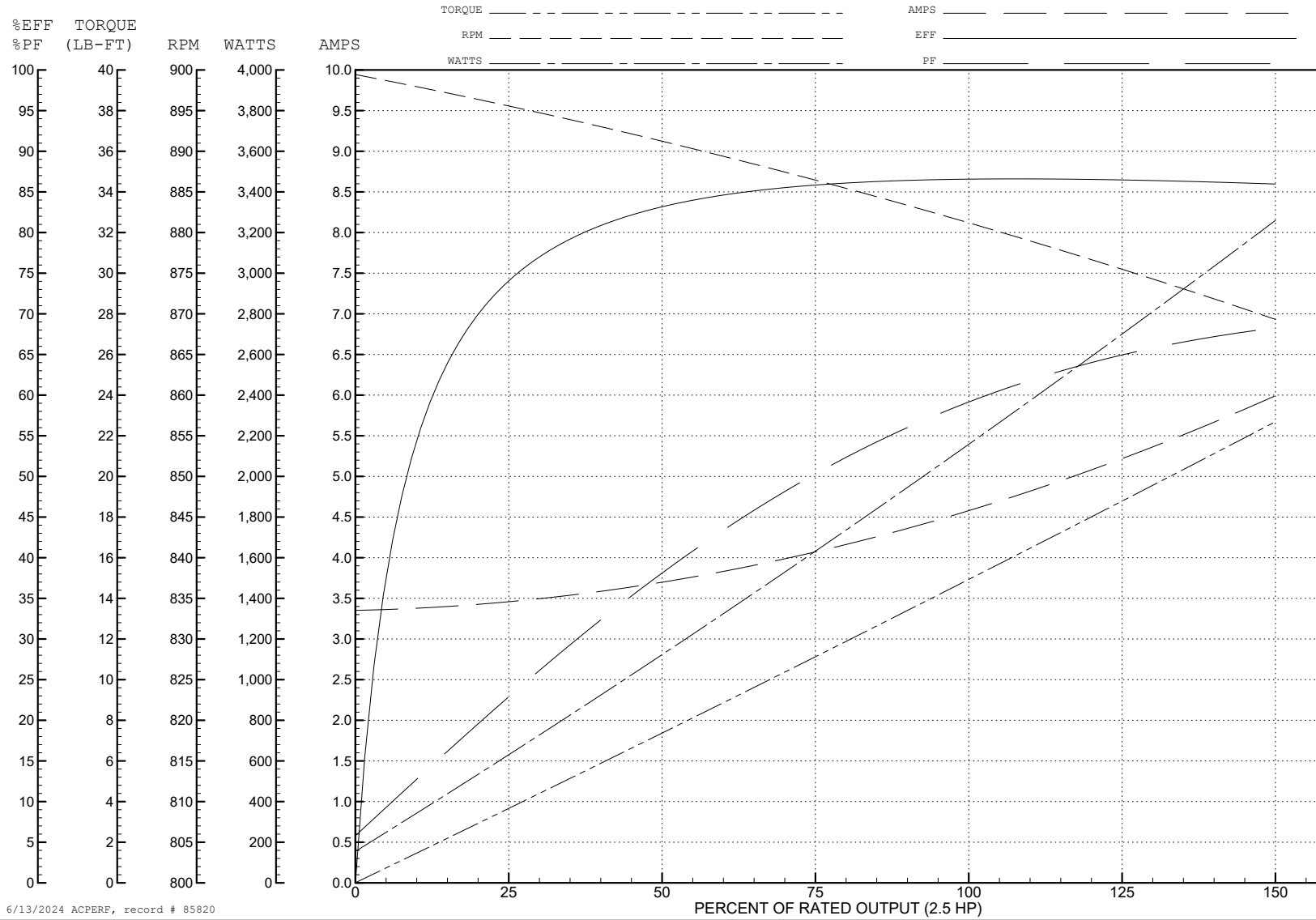
ABB Motors and Mechanical Inc.

WINDING # 07WGZ112

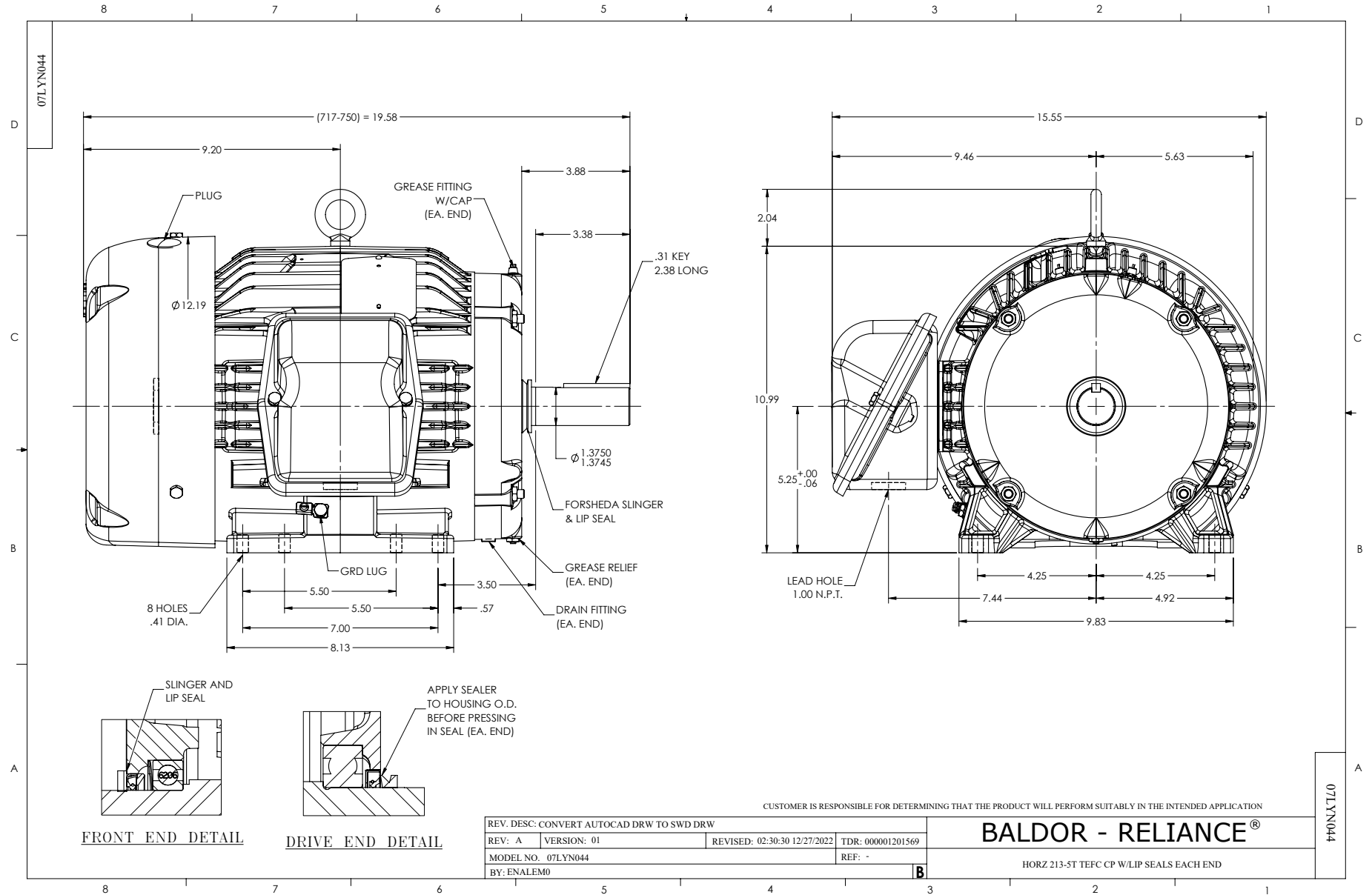
Typical performance - not guaranteed values.

2.5 HP 3 PH 60 HZ 881.4 RPM 460 V 0748M

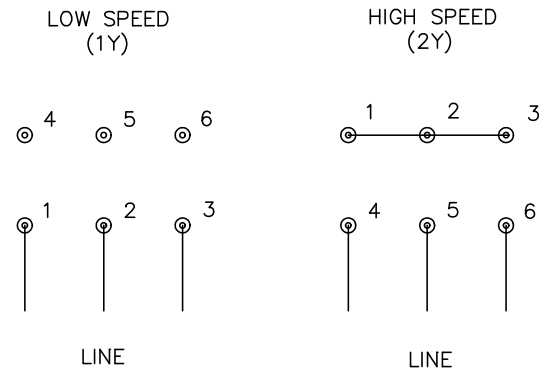
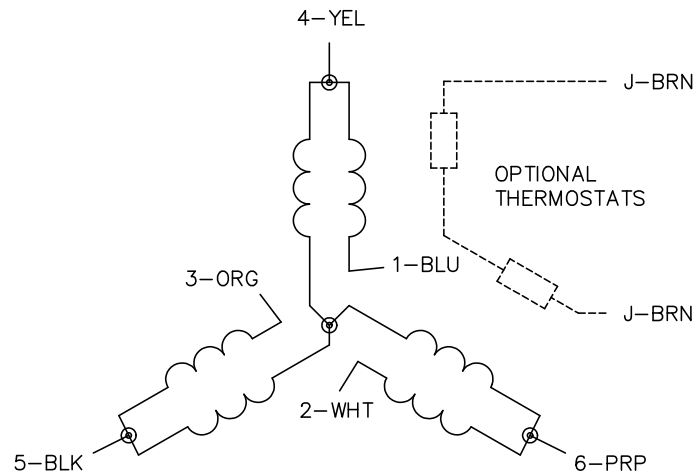
TORQUES (LB-FT): PO=36.1 PU=17.3 LR=27.1 LRA=18.6



6/13/2024 ACPERF, record # 85820



CD0032



NOTES:

1. INTERCHANGE ANY TWO LINE LEADS TO REVERSE ROTATION.
2. OPTIONAL THERMOSTATS ARE PROVIDED WHEN SPECIFIED.
3. ACTUAL NUMBER OF INTERNAL PARALLEL CIRCUITS MAY BE A MULTIPLE OF THOSE SHOWN ABOVE.
4. LEAD COLORS ARE OPTIONAL. LEADS MUST ALWAYS BE NUMBERED AS SHOWN.

CD0032

REV. DESC: REVISE TO SHOW OPTIONAL COLORS			
REV. LTR: E	BY: JLP	REVISED: 01/22/99 8:27	TDR: 0171435
CD0032		FILE: AAA00005145	MDL: -
		MTL: -	

BALDOR ELECTRIC Co.

3PH, SV, 6 LEADS, 2-SPEED 1-WINDING VARIABLE TORQUE