



Customer information packet

CSWDM3537

.5HP, 3450RPM, 3PH, 60HZ, 56C, 3512M, TENV, F1

Class - None

Division - Not Applicable

Specifications

Enclosure	TENV
Frame	56C
Frame Material	Stainless Steel
Frequency	60.00 Hz
Haz Area Class and Group	None
Haz Area Division	Not Applicable
Motor Letter Type	Three Phase
Output @ Frequency	.500 HP @ 60 HZ
Phase	3
Synchronous Speed @ Frequency	3600 RPM @ 60 HZ
Voltage @ Frequency	460.0 V @ 60 HZ 230.0 V @ 60 HZ 208.0 V @ 60 HZ
Agency Approvals	CSA UR
Ambient Temperature	40 °C
Auxillary Box	No Auxillary Box
Auxillary Box Lead Termination	None
Base Indicator	Rigid
Bearing Grease Type	Polyrex EM (-20F +300F)
Blower	None
Current @ Voltage	1.900 A @ 208.0 V 1.800 A @ 230.0 V .900 A @ 460.0 V
Design Code	B
Drip Cover	No Drip Cover
Duty Rating	CONT
Efficiency @ 100% Load	70.0 %
Electrically Isolated Bearing	Not Electrically Isolated
Feedback Device	NO FEEDBACK
Front Face Code	Standard
Front Shaft Indicator	None

Part detail

Revision	R
Type	AC
Mech. spec.	35S630
Base	
Status	PRD/A
Elec. spec.	35WG1706
Layout	35LYS630
Eff. date	09-11-2023
CD Diagram	CD0005
Poles	02
Leads	9#18
Proprietary	False
Created date	02-19-2010

Heater Indicator	No Heater
High Voltage Full Load Amps	0.9 a
Insulation Class	F
Inverter Code	Not Inverter
KVA Code	L
Lifting Lugs	No Lifting Lugs
Locked Bearing Indicator	Locked Bearing
Motor Lead Exit	Ko Box
Motor Lead Quantity/Wire Size	9 @ 18 AWG
Motor Lead Termination	Flying Leads
Motor Standards	NEMA
Motor Type	3512M
Mounting Arrangement	F1
Number of Poles	2
Overall Length	11.06 IN
Power Factor	76
Product Family	Wash Down Paint Free
Pulley End Bearing Type	Sealed Bearing
Pulley Face Code	C-Face
Pulley Shaft Indicator	Standard
Rodent Screen	None
RoHS Status	ROHS COMPLIANT
Service Factor	1.00
Shaft Diameter	0.625 IN
Shaft Extension Location	Pulley End
Shaft Ground Indicator	No Shaft Grounding
Shaft Rotation	Reversible
Shaft Slinger Indicator	No Slinger
Speed	3450 rpm
Speed Code	Single Speed
Starting Method	Direct on line
Thermal Device - Bearing	None
Thermal Device - Winding	None
Vibration Sensor Indicator	No Vibration Sensor

Winding Thermal 1	None
Winding Thermal 2	None

Nameplate

NP1496L									
CAT.NO.	CSWDM3537								
SPEC.	35S630-1706G1								
HP	.5								
VOLTS	208-230/460								
AMP	1.9-1.8/.9								
RPM	3450								
FRAME	56C		HZ	60		PH	3		
SER.F.	1.00	CODE	L	DES	B	CLASS	F		
NEMA-NOM-EFF	70	PF	76						
RATING	40C AMB-CONT								
CC									
DE	6205		ODE	6203					
ENCL	TENV	SN							

AC Induction Motor Performance Data

Record # 20962

Typical performance - not guaranteed values

Winding: 35WG1706-R008		Type: 3512M	Enclosure: TENV	
Nameplate Data			460 V, 60 Hz: High Voltage Connection	
Rated Output (HP)	.5	Full Load Torque	0.752 LB-FT	
Volts	208-230/460	Start Configuration	direct on line	
Full Load Amps	1.9-1.8/.9	Breakdown Torque	3.06 LB-FT	
R.P.M.	3450	Pull-up Torque	2.14 LB-FT	
Hz	60 Phase	Locked-rotor Torque	2.44 LB-FT	
NEMA Design Code	B KVA Code	Starting Current	5.71 A	
Service Factor (S.F.)	1	No-load Current	0.525 A	
NEMA Nom. Eff.	70 Power Factor	Line-line Res. @ 25°C	37.8 Ω	
Rating - Duty	40C AMB-CONT	Temp. Rise @ Rated Load	63°C	
		Locked-rotor Power Factor	72.9	
		Rotor inertia	0.0332 LB-FT ²	

Load Characteristics 460 V, 60 Hz, 0.5 HP

% of Rated Load	25	50	75	100	125	150
Power Factor	48	62	72	79	83	86
Efficiency	43.9	59.7	67.1	70.5	72.1	72.5
Speed	3557	3530	3502	3471	3438	3402
Line amperes	0.565	0.636	0.727	0.839	0.961	1.1

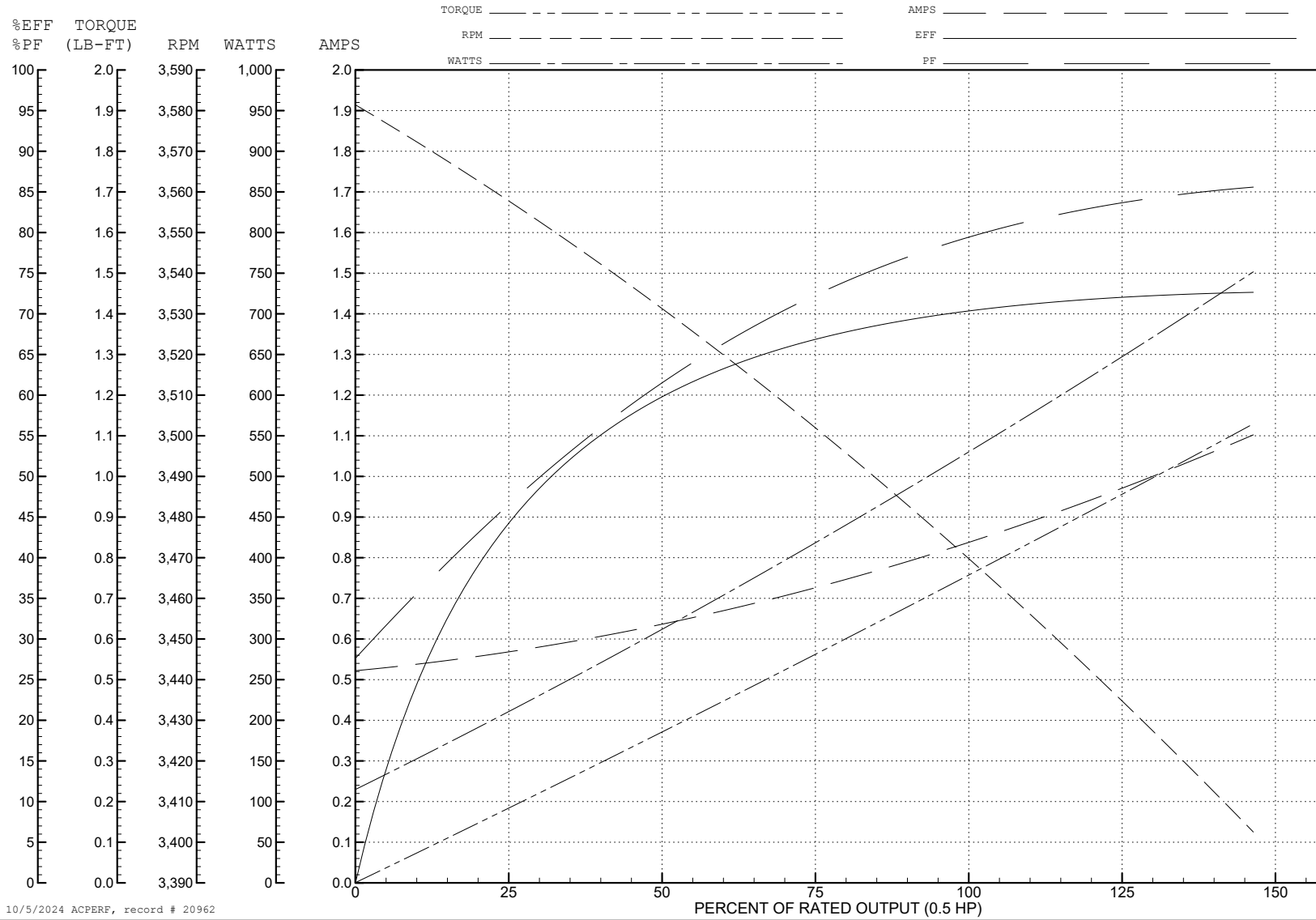
ABB Motors and Mechanical Inc.

WINDING # 35WG1706

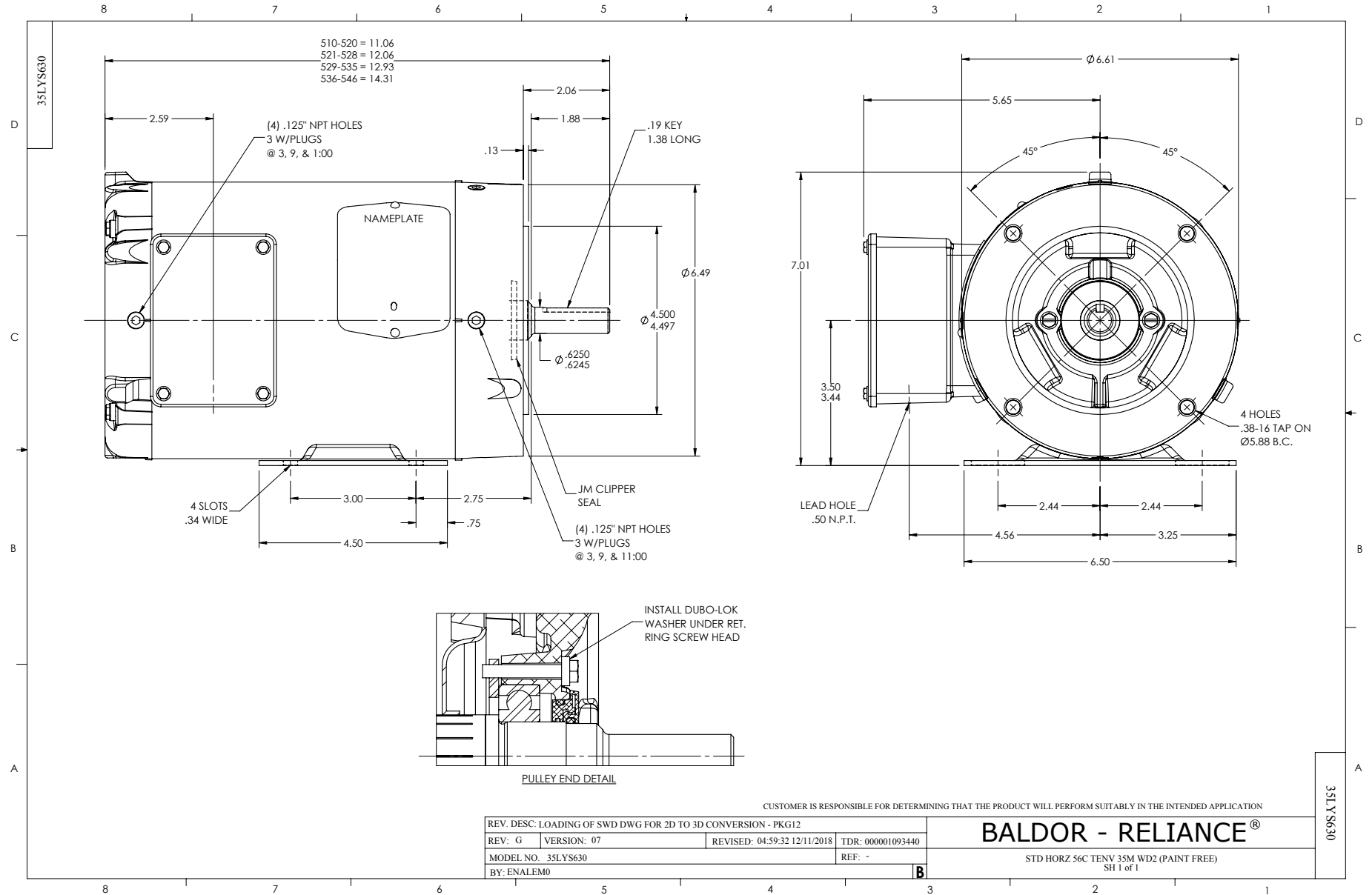
0.5 HP 3 PH 60 HZ 3450 RPM 460 V 3512M

Typical performance - not guaranteed values.

TORQUES (LB-FT): PO=3.06 PU=2.14 LR=2.44 LRA=5.71



10/5/2024 ACPERF, record # 20962



CD0005

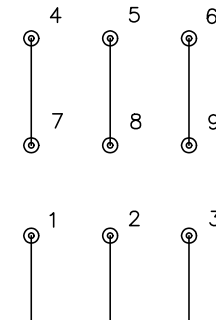


LOW VOLTAGE
(2Y)



LINE

HIGH VOLTAGE
(1Y)



LINE

NOTES:

1. INTERCHANGE ANY TWO LINE LEADS TO REVERSE ROTATION.
2. OPTIONAL THERMOSTATS ARE PROVIDED WHEN SPECIFIED.
3. ACTUAL NUMBER OF INTERNAL PARALLEL CIRCUITS MAY BE A MULTIPLE OF THOSE SHOWN ABOVE.
4. LEAD COLORS ARE OPTIONAL. LEADS MUST ALWAYS BE NUMBERED AS SHOWN.

REV. DESC: REVISE TO SHOW OPTIONAL COLORS			
REV. LTR: E	BY: JLP	REVISED: 01/19/99 10:15	TDR: 0171435
S00000		FILE: AAA00005140	MDL: -
		MTL: -	

BALDOR ELECTRIC Co.

3PH, DV, 9 LEADS

CD0005