

ABB BALDOR RELIANCE III

Customer information packet

CSSWDM3543-H

.75HP, 1170RPM, 3PH, 60HZ, 56HC, 3530M, TENV, F

Class - None

Division - Not Applicable

Specifications

Enclosure	TENV
Frame	56HC
Frame Material	Stainless Steel
Frequency	60.00 Hz
Haz Area Class and Group	None
Haz Area Division	Not Applicable
Motor Letter Type	Three Phase
Output @ Frequency	.750 HP @ 60 HZ
Phase	3
Synchronous Speed @ Frequency	1200 RPM @ 60 HZ
Voltage @ Frequency	230.0 V @ 60 HZ 460.0 V @ 60 HZ
Agency Approvals	NEMA PREMIUM NEMA_PREMIUM UR CSA EEV
Ambient Temperature	40 °C
Auxiliary Box	NO AUXILLARY BOX
Auxiliary Box Lead Termination	None
Base Indicator	Rigid
Bearing Grease Type	Polyrex EM (-20F +300F)
Blower	None
Current @ Voltage	1.350 A @ 460.0 V 2.700 A @ 230.0 V
Design Code	B
Drip Cover	No Drip Cover
Duty Rating	CONT
Efficiency @ 100% Load	82.5 %
Electrically Isolated Bearing	Not Electrically Isolated
Feedback Device	NO FEEDBACK
Front Shaft Indicator	None
Heater Indicator	No Heater

Part Detail

Revision	A
Type	AC
Mech. spec.	35E6083
Base	
Status	PRD/A
Elec. spec.	35WGG528
Layout	35LYE6083
Eff. date	06-14-2024
CD Diagram	CD0005
Poles	06
Leads	9#18
Proprietary	False
Created date	02-21-2023

High Voltage Full Load Amps	1.4 a
Insulation Class	F
Inverter Code	Inverter Ready
KVA Code	L
Lifting Lugs	No Lifting Lugs
Locked Bearing Indicator	Locked Bearing
Motor Lead Quantity/Wire Size	9 @ 18 AWG
Motor Lead Termination	Flying Leads
Motor Standards	NEMA
Motor Type	3530M
Mounting Arrangement	F1
Number of Poles	6
Overall Length	12.85 IN
Power Factor	61
Product Family	Wash Down All Stainless Steel
Pulley End Bearing Type	Sealed Bearing
Pulley Face Code	C-Face
Pulley Shaft Indicator	Standard
Rodent Screen	None
Service Factor	1.25
Shaft Diameter	0.625 IN
Shaft Ground Indicator	No Shaft Grounding
Shaft Rotation	Reversible
Shaft Slinger Indicator	No Slinger
Speed	1170 rpm
Speed Code	Single Speed
Starting Method	Direct on line
Thermal Device - Bearing	None
Thermal Device - Winding	None
Vibration Sensor Indicator	No Vibration Sensor
Winding Thermal 1	None
Winding Thermal 2	None

Nameplate

NP1953A01									
CAT.NO.	CSSWDM3543-H								
SPEC.	35E6083G528G1								
HP	.75								
VOLTS	230/460								
AMP	2.7/1.35								
RPM	1170								
FRAME	56HC		HZ	60		PH	3		
SER.F.	1.25	CODE	L	DES	B	CLASS	F		
NEMA-NOM-EFF	82.5	PF	61						
RATING	40C AMB-CONT								
CC									
DE	6205	ODE	6203						
ENCL	TENV	SN							
	SFA 3.5/1.75								

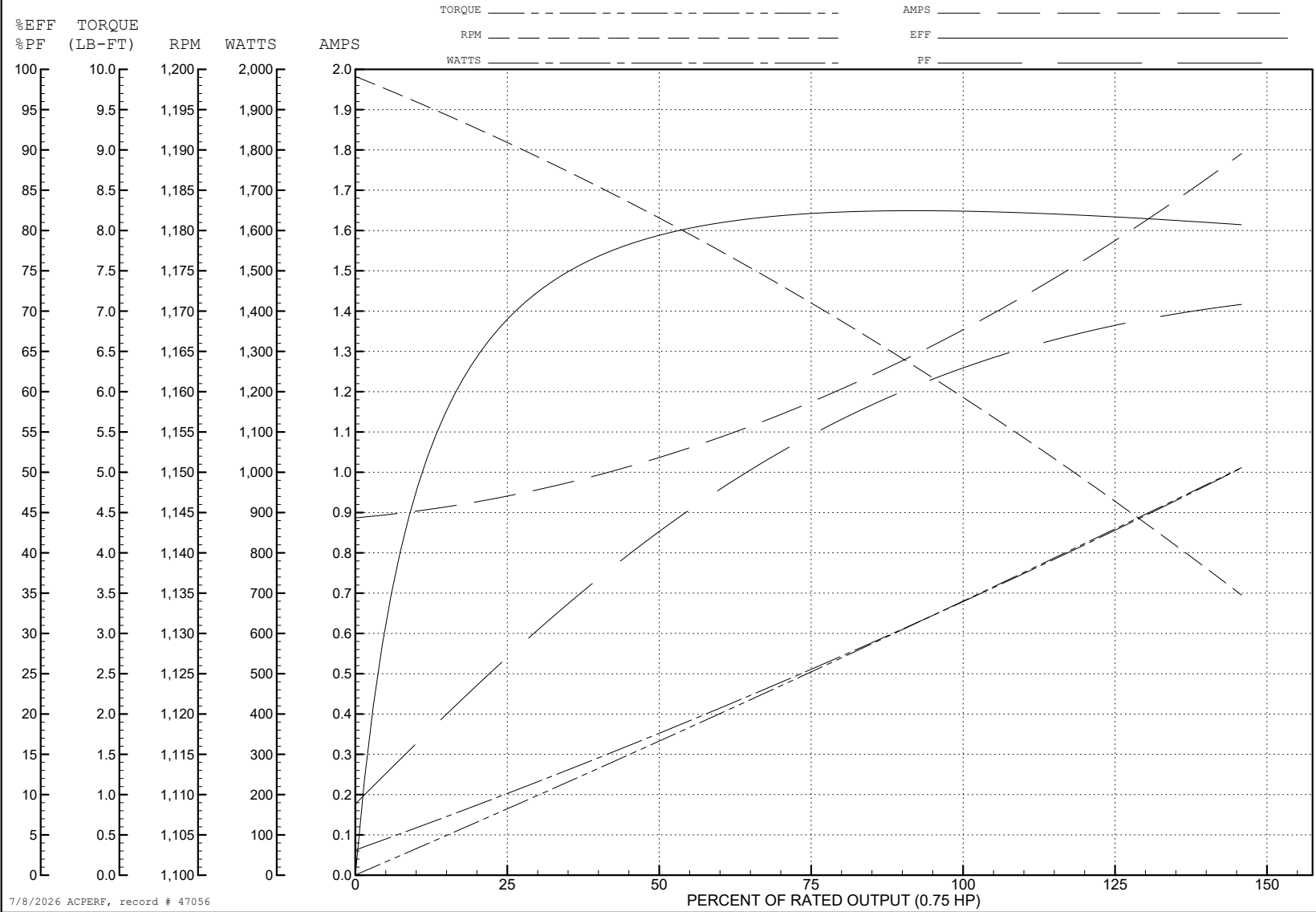
ABB Motors and Mechanical Inc.

WINDING # 35WGQ175

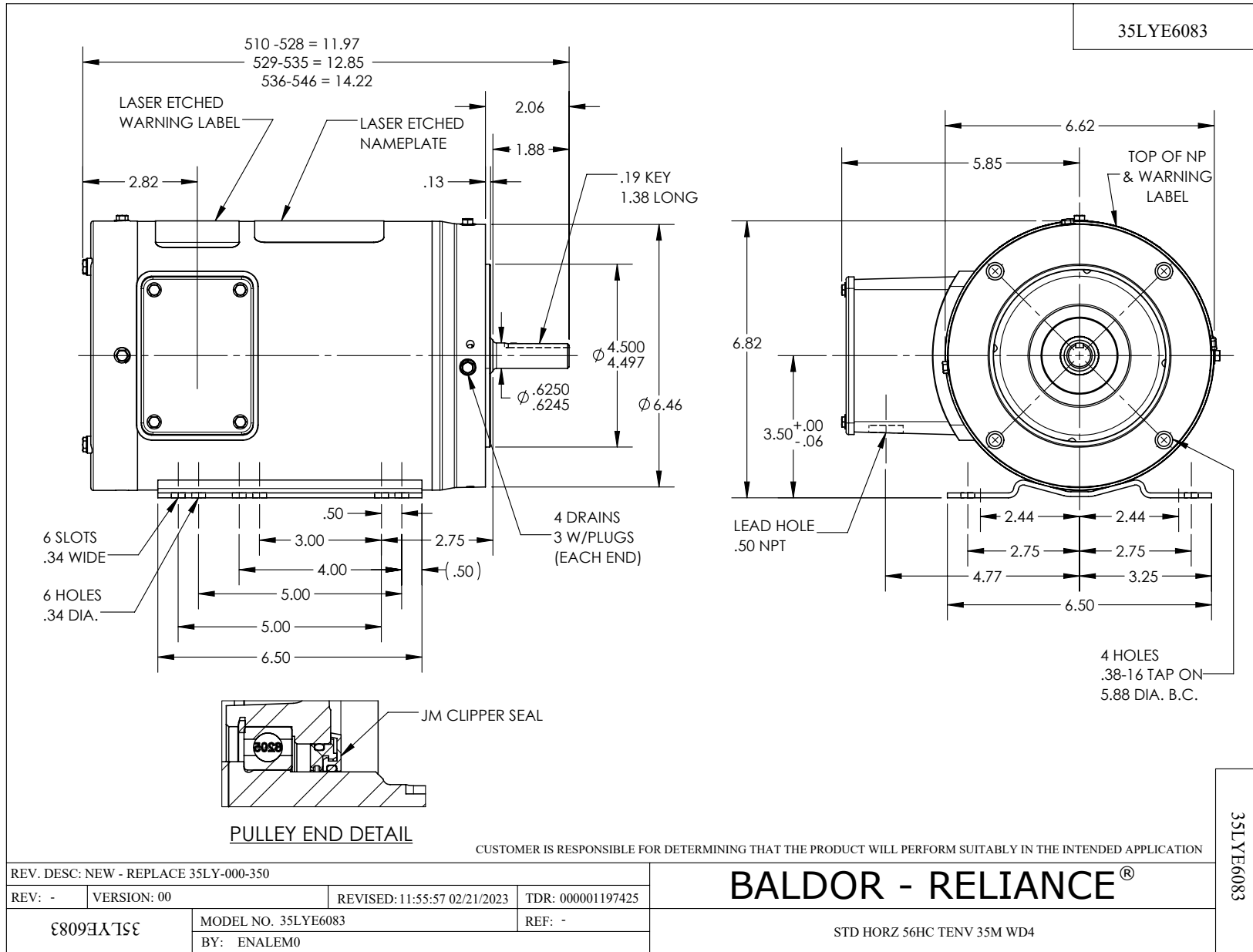
0.75 HP 3 PH 60 HZ 1150 RPM 460 V 3524M

Typical performance - not guaranteed values.

TORQUES (LB-FT): PO=10.4 PU=7.82 LR=8.56 LRA=7.44



7/8/2026 ACPERF, record # 47056



CD0005



LOW VOLTAGE
(2Y)



LINE

HIGH VOLTAGE
(1Y)



LINE

NOTES:

1. INTERCHANGE ANY TWO LINE LEADS TO REVERSE ROTATION.
2. OPTIONAL THERMOSTATS ARE PROVIDED WHEN SPECIFIED.
3. ACTUAL NUMBER OF INTERNAL PARALLEL CIRCUITS MAY BE A MULTIPLE OF THOSE SHOWN ABOVE.
4. LEAD COLORS ARE OPTIONAL. LEADS MUST ALWAYS BE NUMBERED AS SHOWN.

CD0005

REV. DESC: REVISE TO SHOW OPTIONAL COLORS

REV. LTR: E BY: JLP REVISED: 01/19/99 10:15 TDR: 0171435

500000

FILE: AAA00005140

MDL: -

MTL: -

BALDOR ELECTRIC Co.

3PH, DV, 9 LEADS