

BALDOR • RELIANCE

Customer information packet

CSSWDM3534

.33HP, 1755RPM, 3PH, 60HZ, 56C, 3512M, TENV, F1

Class - None

Division - Not Applicable

Specifications

Enclosure	TENV
Frame	56C
Frame Material	Stainless Steel
Frequency	60.00 Hz
Motor Letter Type	Three Phase
Output @ Frequency	.330 HP @ 60 HZ
Phase	3
Synchronous Speed @ Frequency	1800 RPM @ 60 HZ
Voltage @ Frequency	460.0 V @ 60 HZ 230.0 V @ 60 HZ 208.0 V @ 60 HZ
XP Class and Group	None
XP Division	Not Applicable
Agency Approvals	CSA UR
Ambient Temperature	40 °C
Auxillary Box	No Auxillary Box
Auxillary Box Lead Termination	None
Base Indicator	Rigid
Bearing Grease Type	Polyrex EM (-20F +300F)
Blower	None
Current @ Voltage	1.300 A @ 230.0 V 1.300 A @ 208.0 V .650 A @ 460.0 V
Design Code	B
Drip Cover	No Drip Cover
Duty Rating	CONT
Efficiency @ 100% Load	75.5 %
Electrically Isolated Bearing	Not Electrically Isolated
Feedback Device	NO FEEDBACK
Front Face Code	Standard
Front Shaft Indicator	None

Part detail

Revision	P
Type	AC
Mech. spec.	35V814
Base	
Status	PRD/A
Elec. spec.	35WGL029
Layout	35LYV814
Eff. date	02-19-2024
CD Diagram	CD0005
Poles	04
Leads	9#18
Proprietary	False
Created date	12-18-2013

Heater Indicator	No Heater
High Voltage Full Load Amps	0.7 a
Insulation Class	F
Inverter Code	Not Inverter
KVA Code	P
Lifting Lugs	No Lifting Lugs
Locked Bearing Indicator	Locked Bearing
Motor Lead Exit	Ko Box
Motor Lead Quantity/Wire Size	9 @ 18 AWG
Motor Lead Termination	Flying Leads
Motor Standards	NEMA
Motor Type	3512M
Mounting Arrangement	F1
Number of Poles	4
Overall Length	11.09 IN
Power Factor	61
Product Family	Wash Down All Stainless Steel
Pulley End Bearing Type	Sealed Bearing
Pulley Face Code	C-Face
Pulley Shaft Indicator	Standard
Rodent Screen	None
Service Factor	1.25
Shaft Diameter	0.625 IN
Shaft Extension Location	Pulley End
Shaft Ground Indicator	No Shaft Grounding
Shaft Rotation	Reversible
Shaft Slinger Indicator	No Slinger
Speed	1755 rpm
Speed Code	Single Speed
Starting Method	Direct on line
Thermal Device - Bearing	None
Thermal Device - Winding	None
Vibration Sensor Indicator	No Vibration Sensor
Winding Thermal 1	None

Winding Thermal 2

None

Nameplate**NP1951A01**

CAT.NO.	CSSWDM3534						
SPEC.	35V814L029G1						
HP	.33						
VOLTS	208-230/460						
AMP	1.3/.65						
RPM	1755						
FRAME	56C		HZ	60		PH	3
SER.F.	1.25	CODE	P	DES	B	CLASS	F
NEMA-NOM-EFF	75.5	PF	61				
RATING	40C AMB-CONT						
CC							
DE	6205	ODE	6203				
ENCL	TENV	SN					
	SFA 1.4/.7						
	20:1CT 20:1VT						

AC Induction Motor Performance Data

Record # 44202

Typical performance - not guaranteed values

Winding: 35WGL029-R001			Type: 3512M			Enclosure: TENV		
Nameplate Data				460 V, 60 Hz: High Voltage Connection				
Rated Output (HP)			.33	Full Load Torque	0.971 LB-FT			
Volts			208-230/460	Start Configuration	direct on line			
Full Load Amps			1.3/.65	Breakdown Torque	5.35 LB-FT			
R.P.M.			1755	Pull-up Torque	3.65 LB-FT			
Hz	60 Phase		3	Locked-rotor Torque	4.15 LB-FT			
NEMA Design Code	B	KVA Code	P	Starting Current	5.24 A			
Service Factor (S.F.)			1.25	No-load Current	0.51 A			
NEMA Nom. Eff.	75.5	Power Factor	61	Line-line Res. @ 25°C	42.4 Ω			
Rating - Duty			40C AMB-CONT	Temp. Rise @ Rated Load	42°C			
S.F. Amps			1.4/.7	Temp. Rise @ S.F. Load	49°C			
				Locked-rotor Power Factor	77			
				Rotor inertia	0.0709 LB-FT ²			

Load Characteristics 460 V, 60 Hz, 0.33 HP

% of Rated Load	25	50	75	100	125	150	S.F.
Power Factor	26	40	52	61	68	74	68
Efficiency	50.9	66.6	73.7	76.2	77.6	77.4	77.6
Speed	1791	1780	1769	1755	1740	1725	1740
Line amperes	0.52	0.54	0.59	0.65	0.71	0.8	0.71

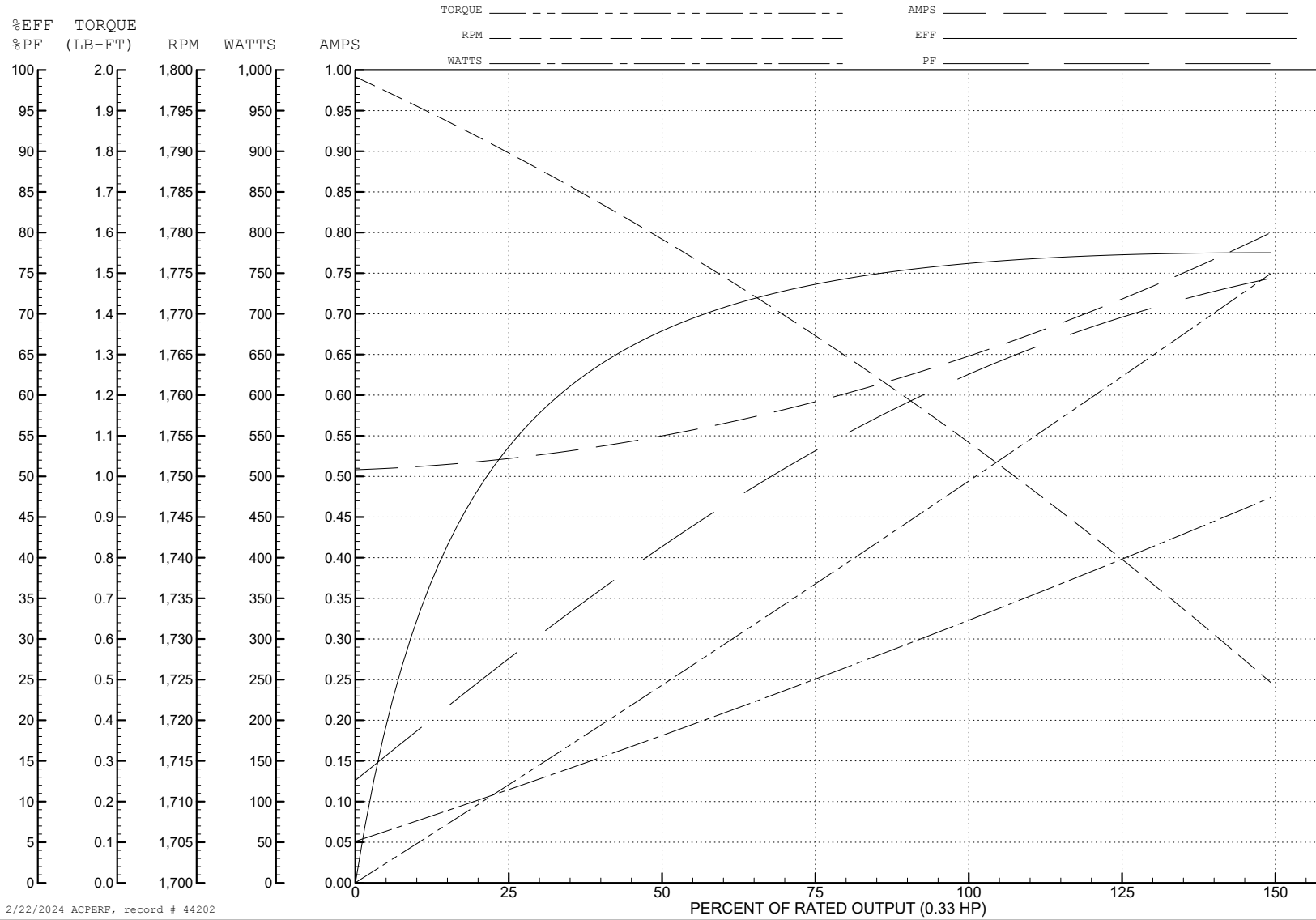
ABB Motors and Mechanical Inc.

WINDING # 35WGL029

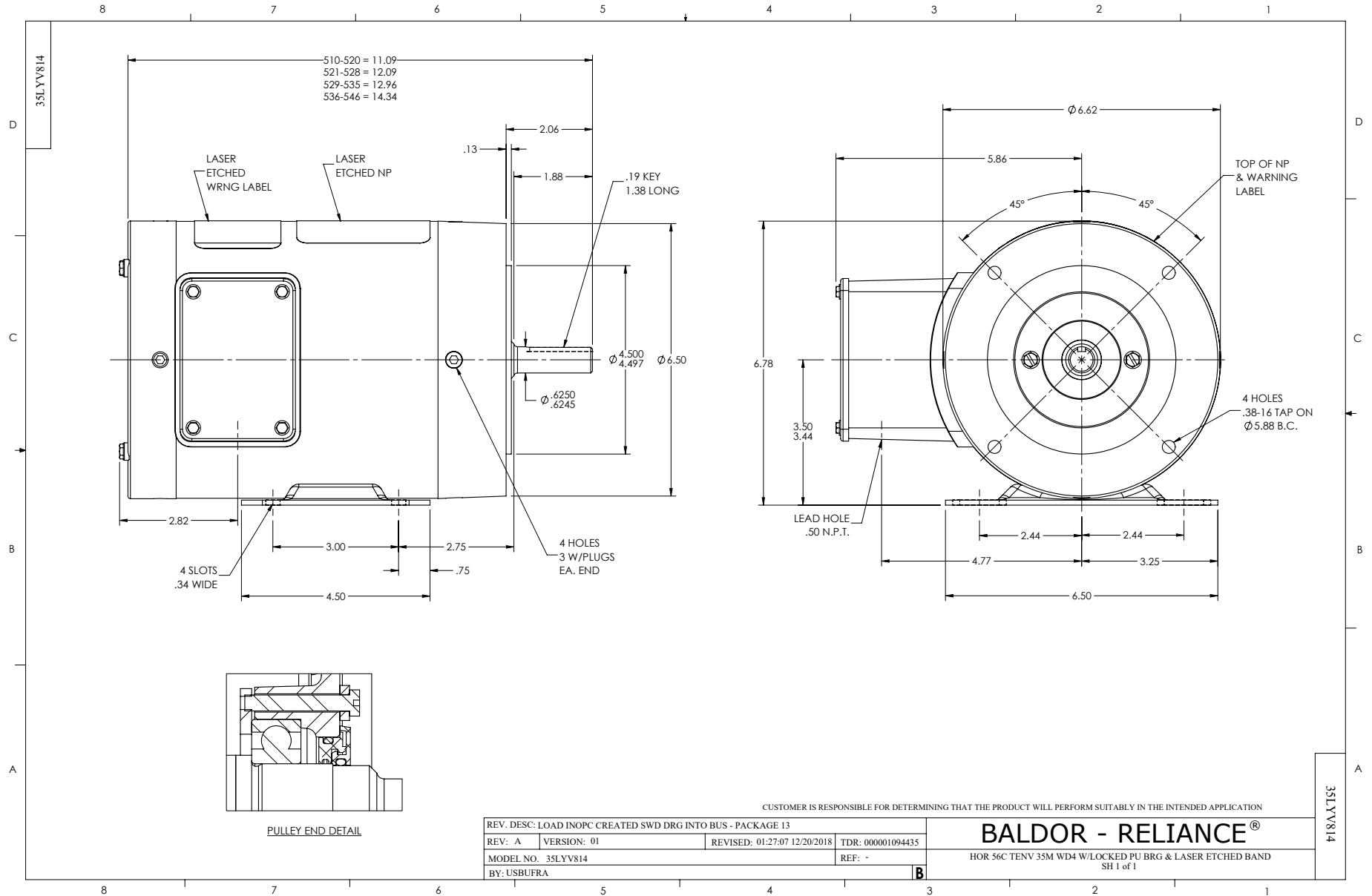
0.33 HP 3 PH 60 HZ 1755 RPM 460 V 3512M

Typical performance - not guaranteed values.

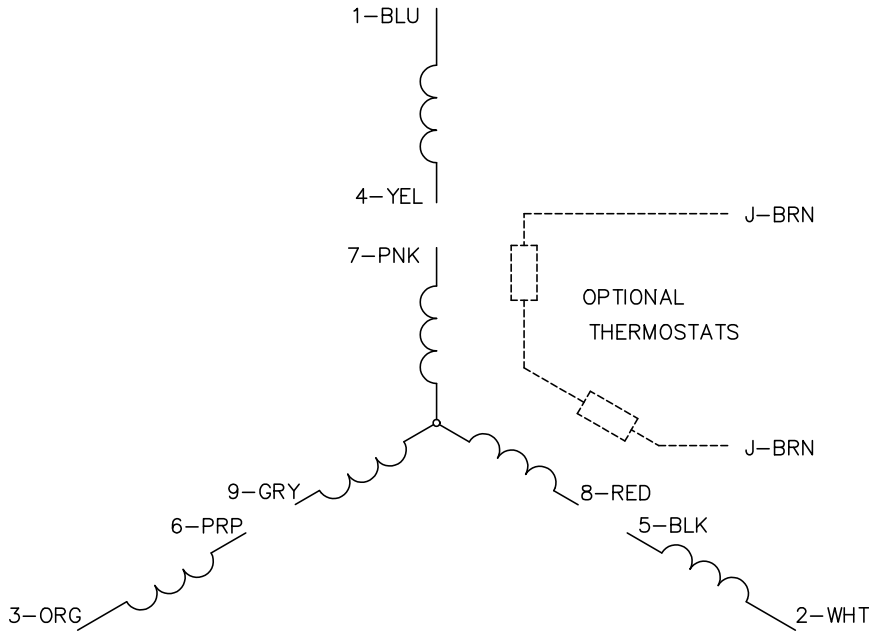
TORQUES (LB-FT): PO=5.35 PU=3.65 LR=4.15 LRA=5.24



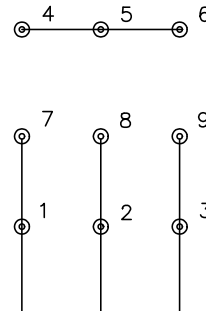
2/22/2024 ACPERF, record # 44202



CD0005

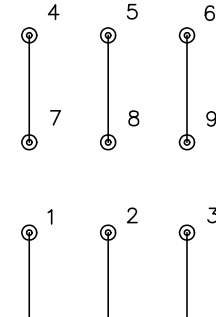


LOW VOLTAGE
(2Y)



LINE

HIGH VOLTAGE
(1Y)



LINE

NOTES:

1. INTERCHANGE ANY TWO LINE LEADS TO REVERSE ROTATION.
2. OPTIONAL THERMOSTATS ARE PROVIDED WHEN SPECIFIED.
3. ACTUAL NUMBER OF INTERNAL PARALLEL CIRCUITS MAY BE A MULTIPLE OF THOSE SHOWN ABOVE.
4. LEAD COLORS ARE OPTIONAL. LEADS MUST ALWAYS BE NUMBERED AS SHOWN.

CD0005

REV. DESC: REVISE TO SHOW OPTIONAL COLORS

REV. LTR: E BY: JLP REVISED: 01/19/99 10:15 TDR: 0171435

500000

FILE: AAA00005140

MDL: -

MTL: -

BALDOR ELECTRIC Co.

3PH, DV, 9 LEADS