



---

# Customer information packet

## CSPM4410T-4

125HP, 1790RPM, 3PH, 60HZ, 444TC, A4480M, TEFC

Class - CLI GP A,B,C,D; CLII GP F,G

Division - Division II

## Specifications

|                               |                                       |
|-------------------------------|---------------------------------------|
| Enclosure                     | TEFC                                  |
| Frame                         | 444TC                                 |
| Frame Material                | Cast Iron                             |
| Frequency                     | 60.00 Hz                              |
| Haz Area Class and Group      | CLI GP A,B,C,D; CLII GP F,G           |
| Haz Area Division             | Division II                           |
| Motor Letter Type             | Three Phase                           |
| Output @ Frequency            | 125.000 HP @ 60 HZ                    |
| Phase                         | 3                                     |
| Synchronous Speed @ Frequency | 1800 RPM @ 60 HZ                      |
| Voltage @ Frequency           | 460.0 V @ 60 HZ                       |
| Agency Approvals              | CCSAUSEEV<br>CURUSEEV<br>NEMA_PREMIUM |
| Ambient Temperature           | 40 °C                                 |
| Auxillary Box                 | No Auxillary Box                      |
| Base Indicator                | Rigid                                 |
| Bearing Grease Type           | Polyrex EM (-20F +300F)               |
| Current @ Voltage             | 142.000 A @ 460.0 V                   |
| Design Code                   | A                                     |
| Drip Cover                    | No Drip Cover                         |
| Duty Rating                   | CONT                                  |
| Efficiency @ 100% Load        | 96.2 %                                |
| Feedback Device               | NO FEEDBACK                           |
| Heater Indicator              | No Heater                             |
| High Voltage Full Load Amps   | 142.0 a                               |
| Insulation Class              | F                                     |
| Inverter Code                 | Inverter Duty                         |
| KVA Code                      | H                                     |
| Lifting Lugs                  | Standard Lifting Lugs                 |
| Max Speed                     | 2700 rpm                              |
| Motor Lead Quantity/Wire Size | 3 @ 2 AWG                             |

## Part detail

|              |            |
|--------------|------------|
| Revision     | -          |
| Type         | AC         |
| Mech. spec.  |            |
| Base         |            |
| Status       | PRD/A      |
| Elec. spec.  | A44WG6731  |
| Layout       | 617435-162 |
| Eff. date    | 01-03-2025 |
| CD Diagram   | 416820-036 |
| Poles        | 04         |
| Leads        | 3#2        |
| Proprietary  | False      |
| Created date | 12-10-2024 |

|                                 |                    |
|---------------------------------|--------------------|
| <b>Motor Standards</b>          | NEMA               |
| <b>Motor Type</b>               | A4480M             |
| <b>Mounting Arrangement</b>     | F1                 |
| <b>Number of Poles</b>          | 4                  |
| <b>Overall Length</b>           | 44.96 IN           |
| <b>Power Factor</b>             | 86                 |
| <b>Product Family</b>           | General Industrial |
| <b>Pulley End Bearing Type</b>  | Ball               |
| <b>Pulley Face Code</b>         | C-Face             |
| <b>Service Factor</b>           | 1.15               |
| <b>Shaft Diameter</b>           | 3.375 IN           |
| <b>Shaft Ground Indicator</b>   | No Shaft Grounding |
| <b>Shaft Rotation</b>           | Reversible         |
| <b>Shaft Slinger Indicator</b>  | Shaft Slinger      |
| <b>Speed</b>                    | 1790 rpm           |
| <b>Speed Code</b>               | Single Speed       |
| <b>Starting Method</b>          | Direct on line     |
| <b>Thermal Device - Bearing</b> | None               |
| <b>Thermal Device - Winding</b> | None               |

**Nameplate**

---

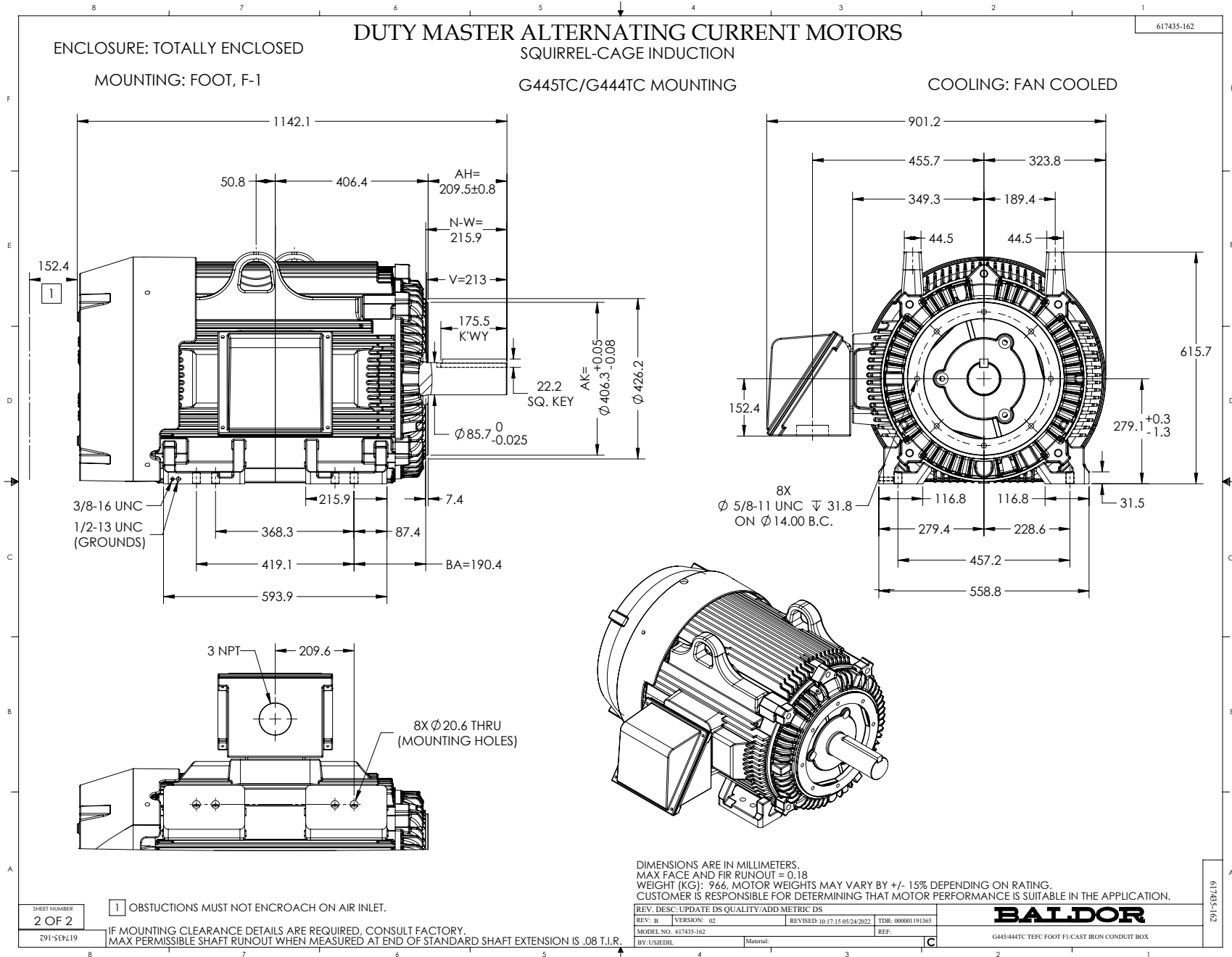
|                  |
|------------------|
| <b>NP2496L</b>   |
| MOBIL POLYREX EM |

---

**NP4562L**

|                         |                  |                                |               |                                |              |                               |                |                        |     |
|-------------------------|------------------|--------------------------------|---------------|--------------------------------|--------------|-------------------------------|----------------|------------------------|-----|
| <b>CAT NO</b>           | CSPM4410T-4      | <b>SPEC NO.</b>                | A44-5015-6731 |                                | <b>I.P.</b>  | 55                            |                |                        |     |
| <b>HP</b>               | 125              | <b>AMPS</b>                    | 142           | <b>VOLTS</b>                   | 460          | <b>DESIGN</b>                 | A              |                        |     |
| <b>FRAME SIZE</b>       | 444TC            | <b>RPM</b>                     | 1790          | <b>MAX RPM</b>                 | 2700         | <b>HZ</b>                     | 60             | <b>AMB</b>             | 40  |
| <b>D.E. BRG.</b>        | 90BC03J30X       | <b>PH.3</b>                    | 3             | <b>DUTY</b>                    | CONT         | <b>INSUL.CLASS</b>            | F              |                        |     |
| <b>O.D.E. BRG.</b>      | 90BC03J30X       | <b>TYPE P</b>                  |               | <b>ENCL</b>                    | TEFC         | <b>SF</b>                     | 1.15           | <b>CODE</b>            | H   |
| <b>POWER FACTOR</b>     | 86               | <b>MAX CORR KVAR</b>           | 25.8          | <b>NEMA NOM EFFICIENCY</b>     | 96.2         | <b>MOTOR WEIGHT</b>           | 9999           | <b>LBS</b>             |     |
| <b>CL.I,DIV 2,GRP:</b>  | A,B,C,D          | <b>T.CODE</b>                  | T3C           | <b>CL.1,ZONE 2,GRP:</b>        |              | <b>IIA,IIB,IIC</b>            | T= 160         | <b>INVERTER T.CODE</b> | T3  |
| <b>CL.II,DIV 2,GRP:</b> | F,G              | <b>T.CODE</b>                  | T3C           | <b>CL II ZONE 22 GRPS IIIB</b> |              | <b>T=</b>                     | 160            | <b>INVERTER T.CODE</b> | T3C |
| <b>ID LOGO</b>          | <b>INV TYPE:</b> | <b>VPWM</b>                    | <b>CT</b> 30  | <b>TO</b> 60                   | <b>VT</b> 3  | <b>TO</b> 60                  | <b>CHP</b> 60  | <b>TO</b> 90           |     |
| <b>ID LOGO</b>          | 1.0 SF VPWM      | <b>WK2</b>                     | 52.8          | <b>LBFT2</b>                   | <b>SL HZ</b> | 0.41                          | <b>MAG CUR</b> | 44.3                   |     |
| <b>SER.NO.</b>          |                  | <b>MEETS INTENT OF IEEE-45</b> |               |                                |              | <b>FOR WEATHER PROTECTION</b> |                |                        |     |





416820-036

A-C MOTOR  
CONNECTION DIAGRAM  
STANDARD 3 LEAD CONNECTED



(N.P. 1575-BA)

416820-036

|                                      |                                |                   |
|--------------------------------------|--------------------------------|-------------------|
| REV. DESC: LOADED TO BUS, C/R 335225 |                                |                   |
| REV. LTR: -                          | VERSION: 00                    | TDR: 000000538207 |
| FILE: \MGA\00000\682                 | REVISED: 11: 54: 06 04/30/2010 |                   |
| MTL: -                               | BY: RAGRA                      |                   |

**BALDOR**

CONN DIAG - STANDARD 3 LEAD  
SH 1 of 1