



Customer information packet

CSPM4407T-4

200HP, 1790RPM, 3PH, 60HZ, 449TC, A44124M, TEF

Class - CLI GP A,B,C,D

Division - Division II

Specifications

Enclosure	TEFC
Frame	449TC
Frame Material	Cast Iron
Frequency	60.00 Hz
Haz Area Class and Group	CLI GP A,B,C,D
Haz Area Division	Division II
Motor Letter Type	Three Phase
Output @ Frequency	200.000 HP @ 60 HZ
Phase	3
Synchronous Speed @ Frequency	1800 RPM @ 60 HZ
Voltage @ Frequency	460.0 V @ 60 HZ
Agency Approvals	CURUSEEV CCSAUSEEV NEMA_PREMIUM
Ambient Temperature	40 °C
Auxillary Box	No Auxillary Box
Base Indicator	Rigid
Bearing Grease Type	Polyrex EM (-20F +300F)
Current @ Voltage	227.000 A @ 460.0 V
Design Code	A
Duty Rating	CONT
Efficiency @ 100% Load	96.5 %
Feedback Device	NO FEEDBACK
Heater Indicator	No Heater
High Voltage Full Load Amps	227.0 a
Insulation Class	F
Inverter Code	Inverter Duty
KVA Code	J
Lifting Lugs	Standard Lifting Lugs
Max Speed	2700 rpm
Motor Lead Quantity/Wire Size	6 @ 2/0 AWG
Motor Standards	NEMA

Part detail

Revision	-
Type	AC
Mech. spec.	
Base	
Status	PRD/A
Elec. spec.	A44WG6734
Layout	617435-296
Eff. date	12-26-2024
CD Diagram	416820-036
Poles	04
Leads	3#2/0 (02 per group)
Proprietary	False
Created date	12-10-2024

Motor Type	A44124M
Mounting Arrangement	F1
Number of Poles	4
Overall Length	53.47 IN
Power Factor	85
Product Family	General Industrial
Pulley End Bearing Type	Ball
Pulley Face Code	C-Face
Service Factor	1.15
Shaft Diameter	3.375 IN
Shaft Ground Indicator	No Shaft Grounding
Shaft Rotation	Reversible
Shaft Slinger Indicator	Shaft Slinger
Speed	1790 rpm
Speed Code	Single Speed
Starting Method	Direct on line
Thermal Device - Bearing	None
Thermal Device - Winding	None

Nameplate

NP4562L

CAT NO	CSPM4407T-4	SPEC NO.	A44-5001-6734		I.P.	55	
HP	200	AMPS	224	VOLTS	460	DESIGN	A
FRAME SIZE	449TC	RPM	1790	MAX RPM	2700	HZ	60
D.E. BRG.	90BC03J30X	PH.3	3	DUTY	CONT	INSUL.CLASS	F
O.D.E. BRG.	90BC03J30X	TYPE P		ENCL	TEFC	SF	1.15
POWER FACTOR	87	MAX CORR KVAR	37	NEMA NOM EFFICIENCY	96.5	MOTOR WEIGHT	3198
CL.I,DIV 2,GRP:	A,B,C,D	T.CODE	T3	CL.1,ZONE 2,GRP:	IIA,IIB,IIC	T=	200
CL.II,DIV 2,GRP:	F,G	T.CODE	T3C	CL II ZONE 22 GRPS IIIB	T=	160	INVERTER T.CODE
ID LOGO	INV TYPE:	VPWM	CT 30	TO	60	VT	3
ID LOGO	1.0 SF VPWM	WK2	81.8	LBFT2	SL HZ	0.3	MAG CUR
SER.NO.		MEETS INTENT OF IEEE-45			FOR WEATHER PROTECTION		

NP2496L

MOBIL POLYREX EM

DUTY MASTER ALTERNATING CURRENT MOTORS
SQUIRREL-CAGE INDUCTION

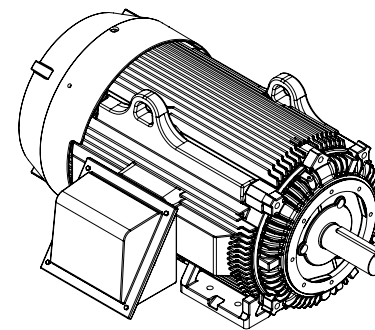
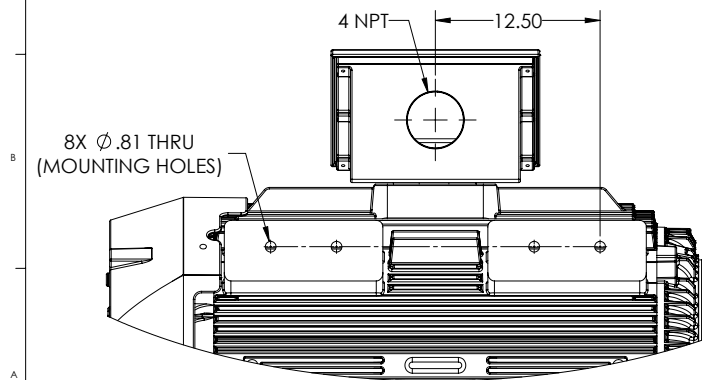
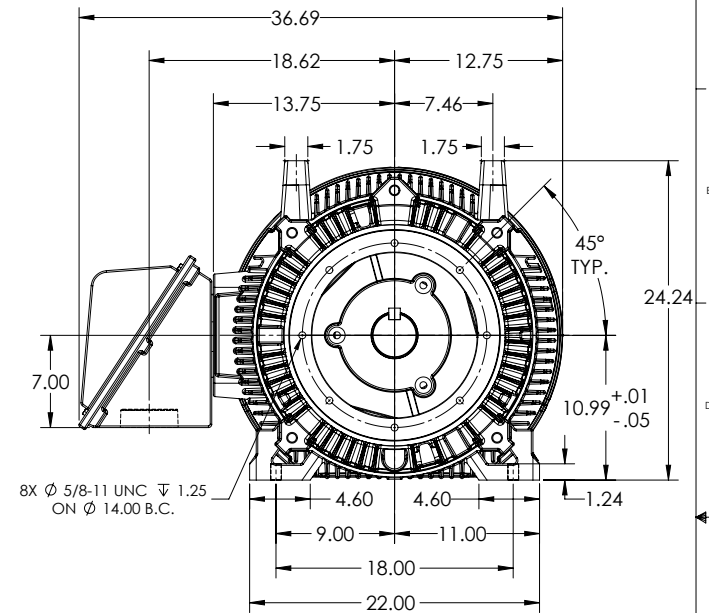
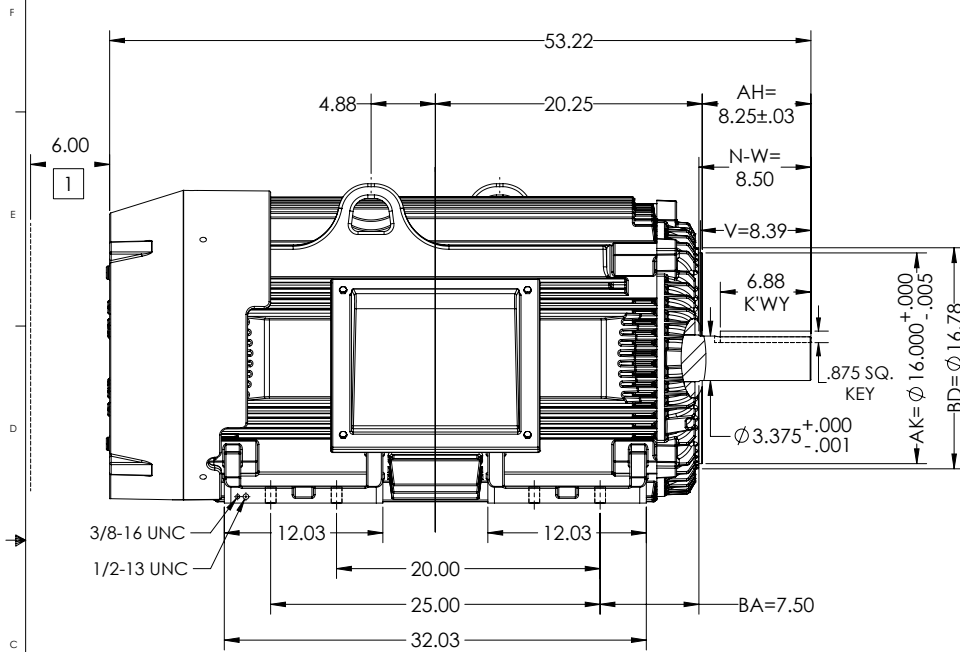
617435-296

ENCLOSURE: TOTALLY ENCLOSED

MOUNTING: FOOT, F1, C-FACE

G449TC/G447TC FRAME MOUNTING HOLES

COOLING: FAN COOLED



SHEET NUMBER
1 OF 1
96C-557219

1 OBSTRUCTION MUST NOT ENCR OACH ON AIR INLET.

IF MOUNTING CLEARANCE DETAILS ARE REQUIRED, CONSULT FACTORY.
MAX PERMISSIBLE SHAFT RUNOUT WHEN MEASURED AT END OF STANDARD SHAFT EXTENSION IS .003" T.I.R.

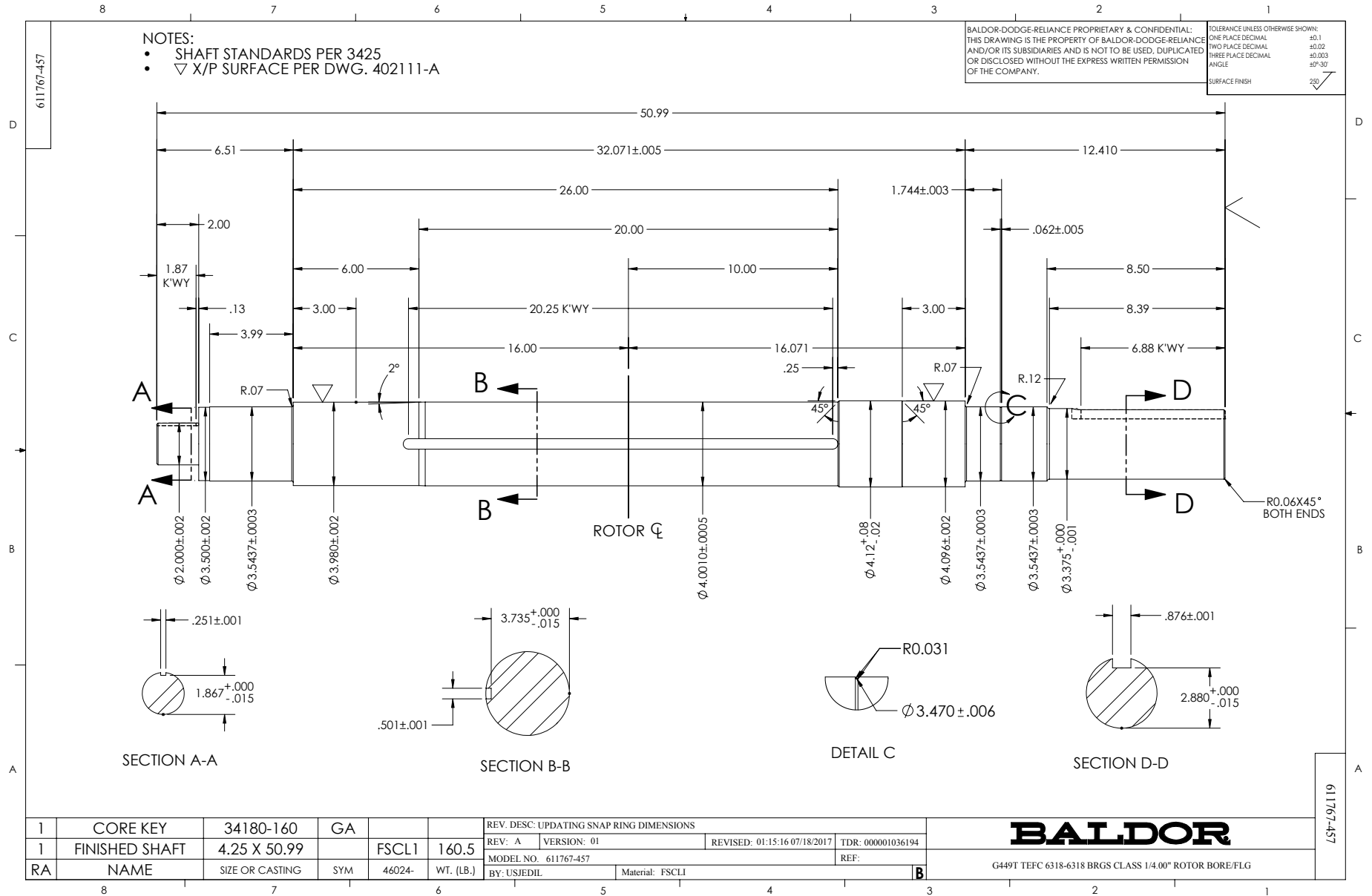
DIMENSIONS ARE IN INCHES.
FACE RUNOUT & ECCENTRICITY= .007 MAX. T.I.R.
WEIGHT (LBS): 3080. MOTOR WEIGHTS MAY VARY BY 15% DEPENDING ON RATING.
CUSTOMER IS RESPONSIBLE FOR DETERMINING THAT MOTOR PERFORMANCE IS SUITABLE IN THE APPLICATION.

REV. DESC. UPDATE DS QUALITY			
REV: A	VERSION: 01	REVISED: 02-02-22 06/28/2017	TDR: 000001030263
MODEL NO. 617435-296			
BY: USJEDH			

BALDOR

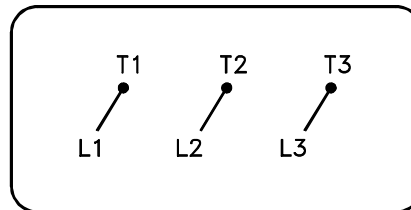
G449TC/447TC TEFC F1 FOOTED CAST IRON CONDUIT BOX

617435-296



416820-036

A-C MOTOR
CONNECTION DIAGRAM
STANDARD 3 LEAD CONNECTED



(N.P. 1575-BA)

416820-036

REV. DESC: LOADED TO BUS, C/R 335225		
REV. LTR: -	VERSION: 00	TDR: 000000538207
FILE: \MGA\00000\682	REVISED: 11:54:06 04/30/2010	
MTL: -	BY: RAGRA	

BALDOR

CONN DIAG - STANDARD 3 LEAD
SH 1 of 1