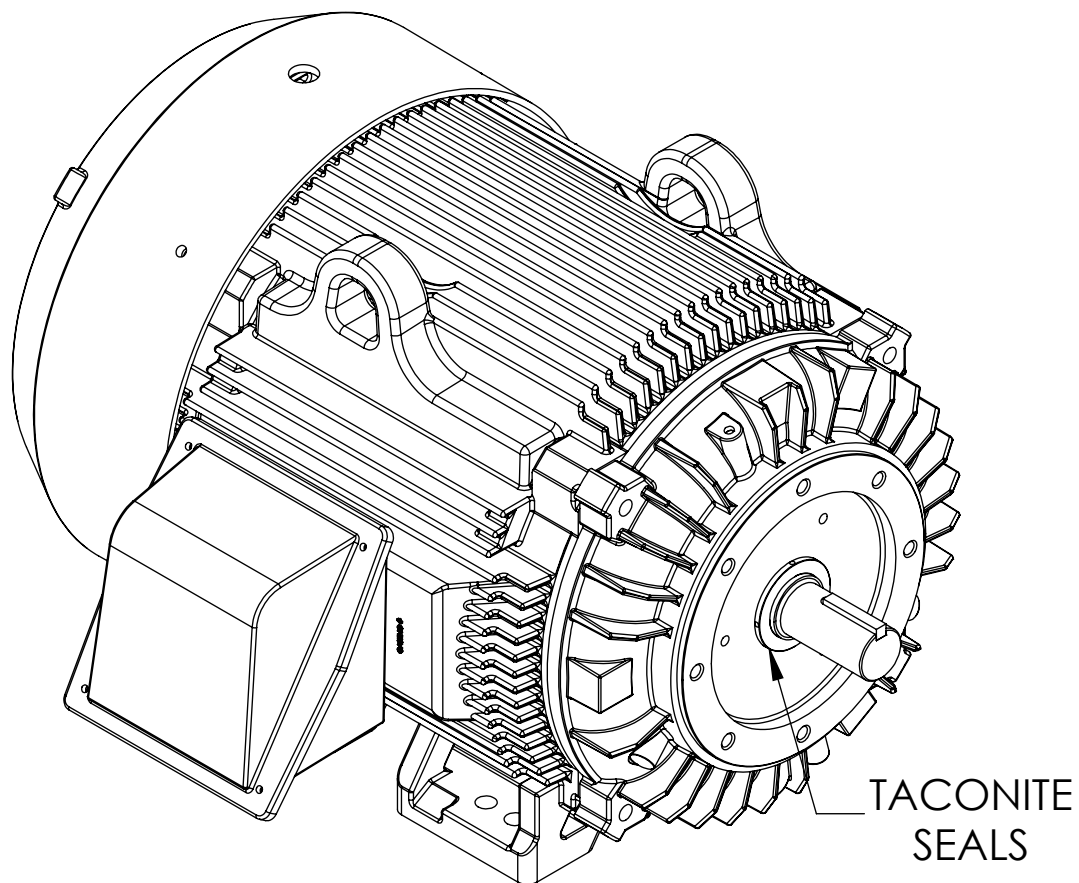
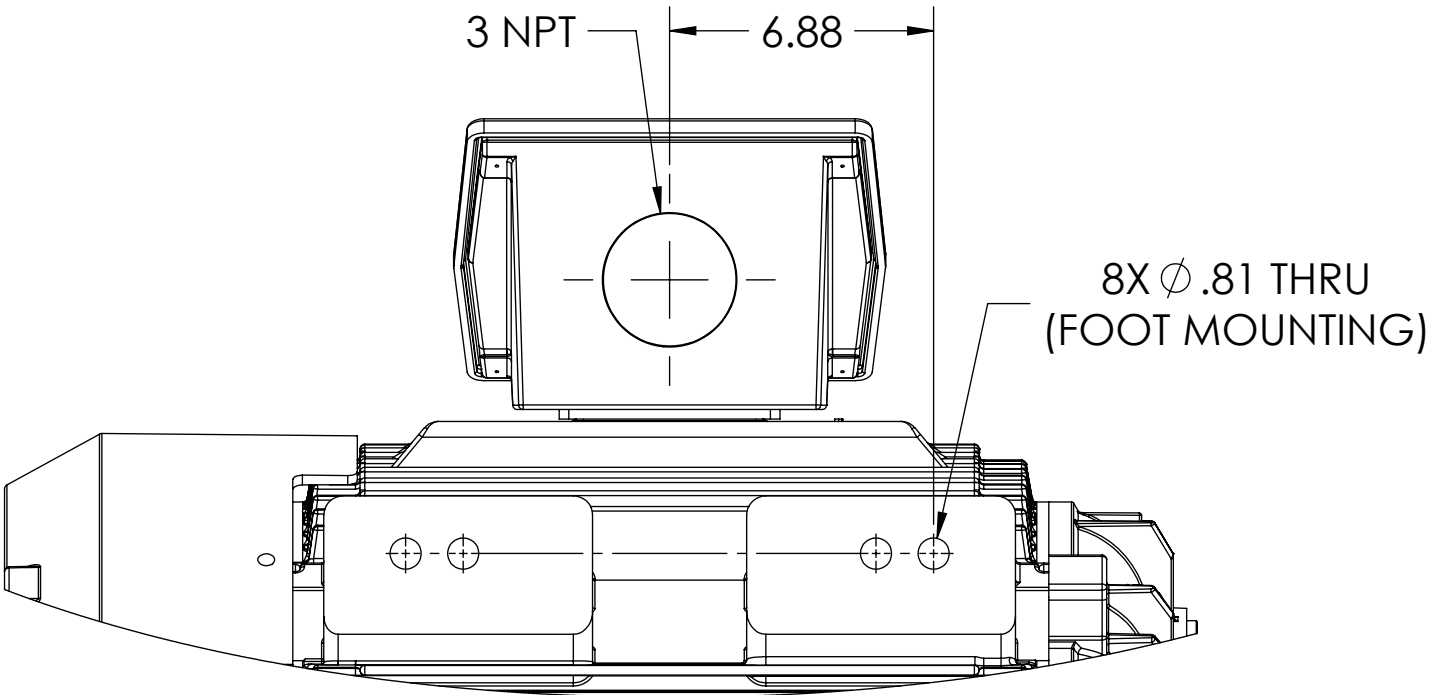
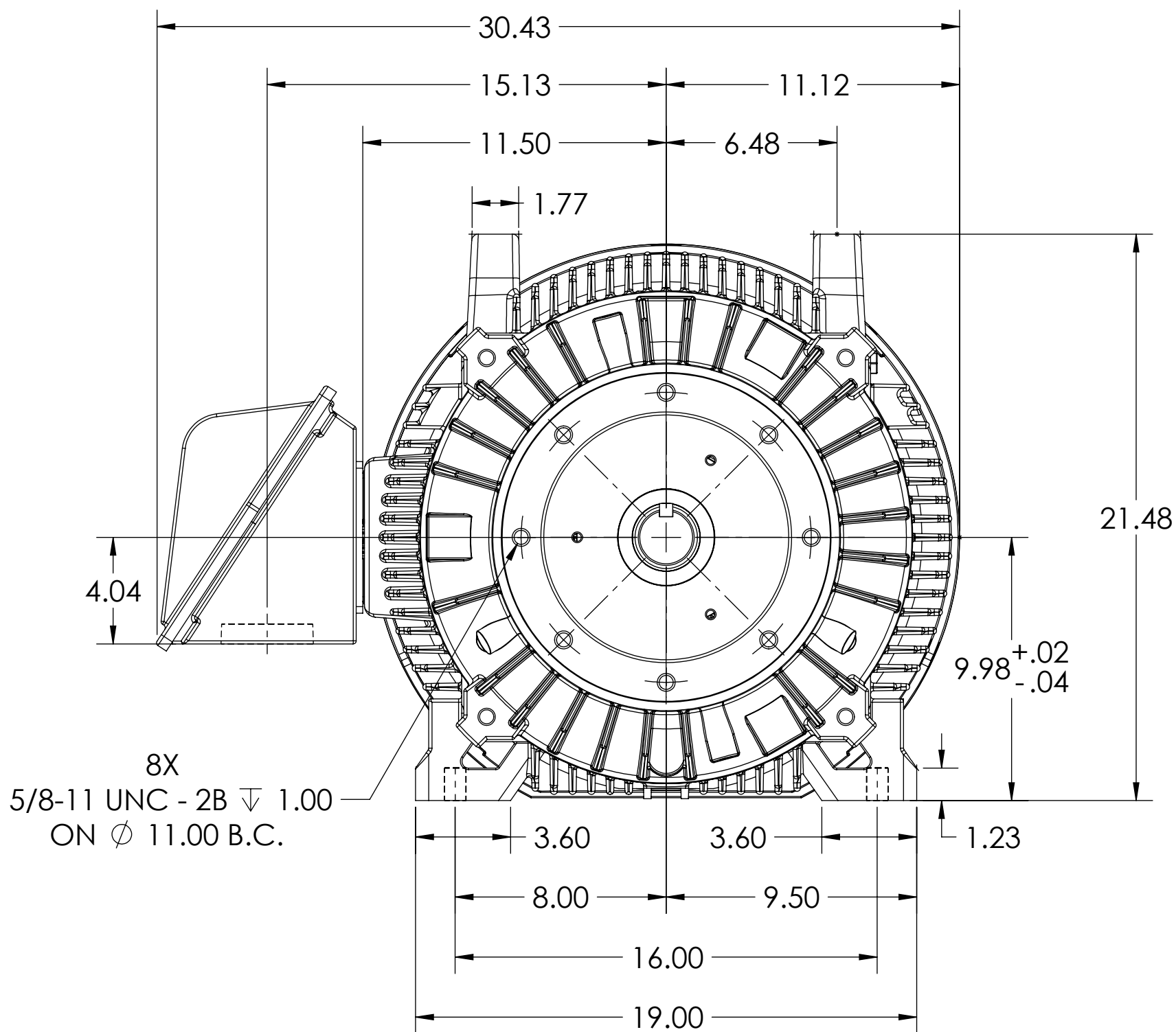
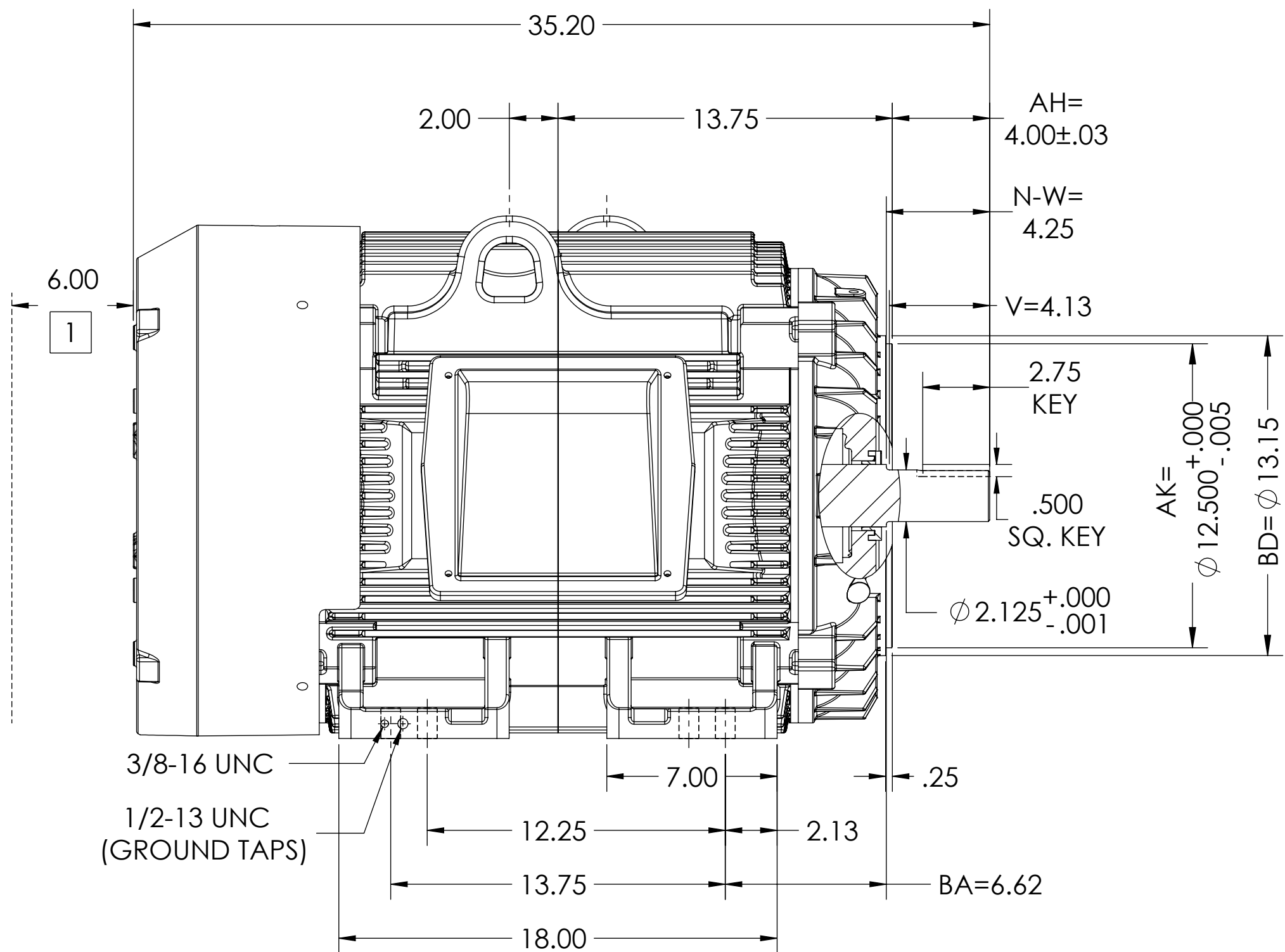


DUTY MASTER ALTERNATING CURRENT MOTORS
SQUIRREL-CAGE INDUCTION

ENCLOSURE: TOTALLY ENCLOSED COOLING: FAN COOLED
MOUNTING: FOOT, F-1 G405TSC/G404TSC FRAME MOUNTING HOLES ENCLOSURE ENHANCEMENT: SEVERE DUTY



1 OBSTRUCTIONS MUST NOT ENCROACH ON AIR INLET.

MAX FACE RUNOUT AND FIT ECCENTRICITY = 0.007 T.I.R.
IF MOUNTING CLEARANCE DETAILS ARE REQUIRED, CONSULT FACTORY.
MAX PERMISSIBLE SHAFT RUNOUT WHEN MEASURED AT END OF STANDARD SHAFT EXTENSION IS .003" T.I.R.

DIMENSIONS ARE IN INCHES.
WEIGHT (LBS): 1350 ± 15 %
CUSTOMER IS RESPONSIBLE FOR DETERMINING THAT MOTOR PERFORMANCE IS SUITABLE IN THE APPLICATION.

REV. DESC: NEW DRAWING			
REV: -	VERSION: 00	REVISED: 11:18:22 12/12/2024	TDR: 000001239215
MODEL NO. 617437-732			REF:
BY: USJEDIL		Material:	C

BALDOR

G405/404TSC TEFC FOOT F1/CI BOX/TACONITE SEALS

DUTY MASTER ALTERNATING CURRENT MOTORS
SQUIRREL-CAGE INDUCTION

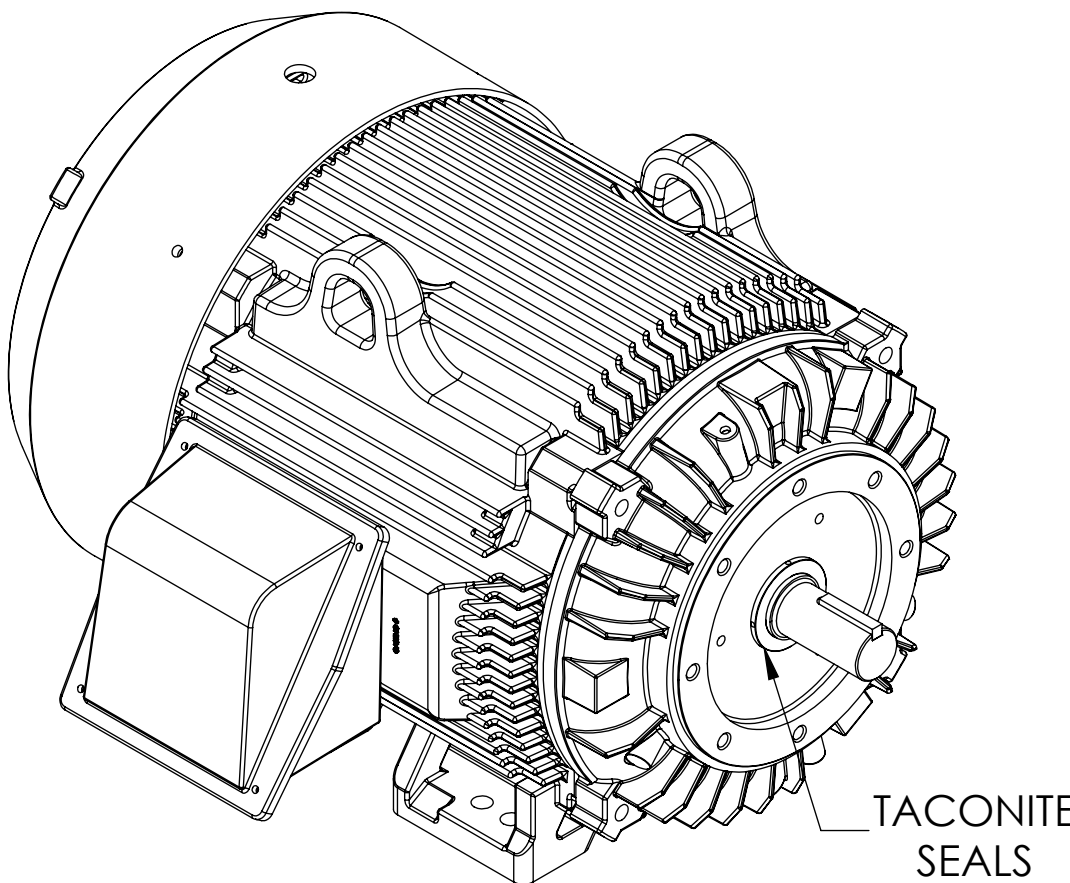
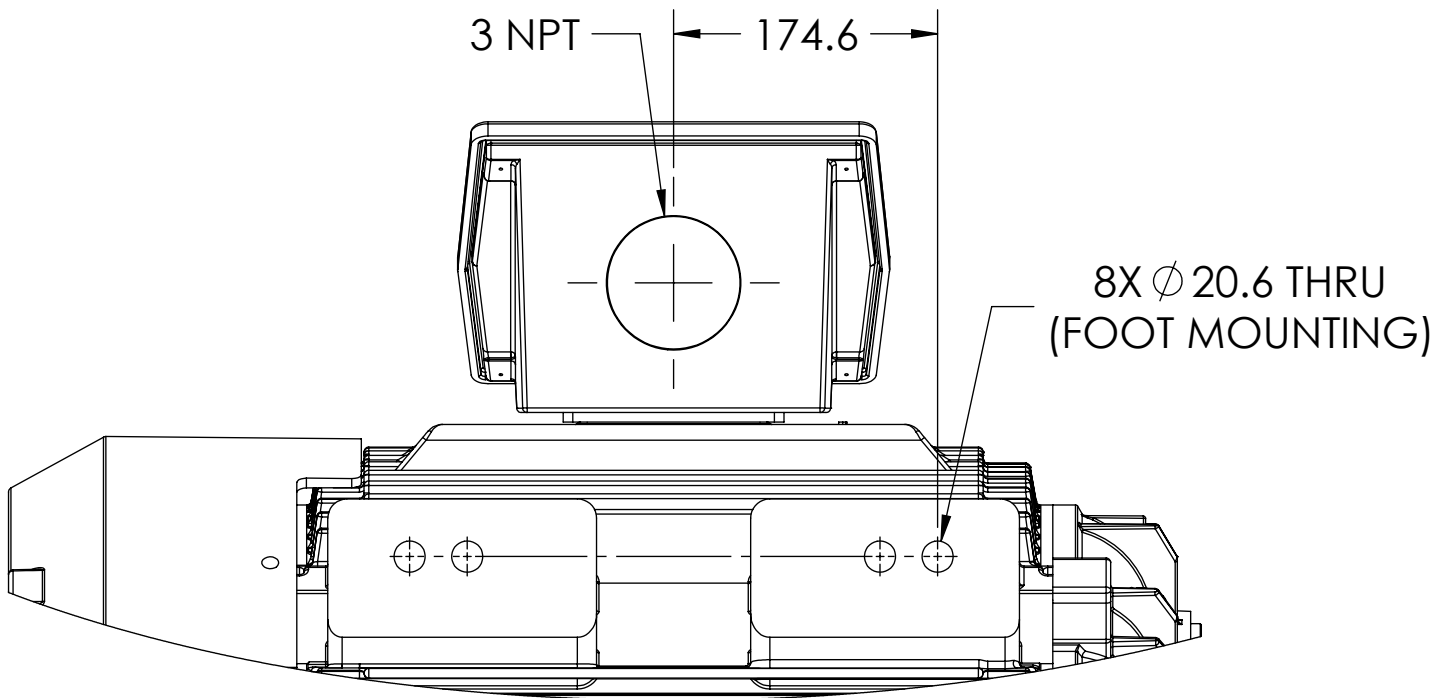
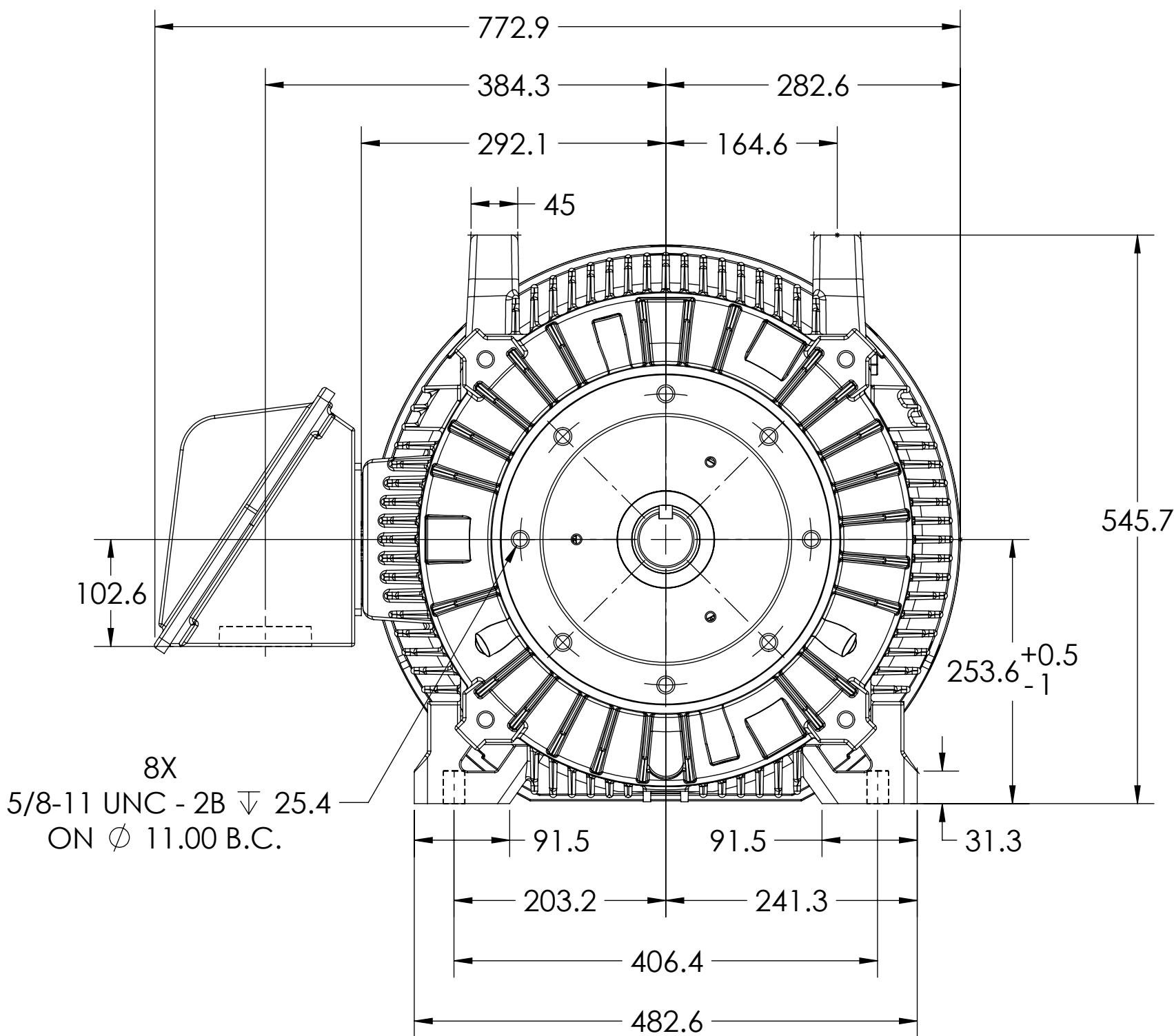
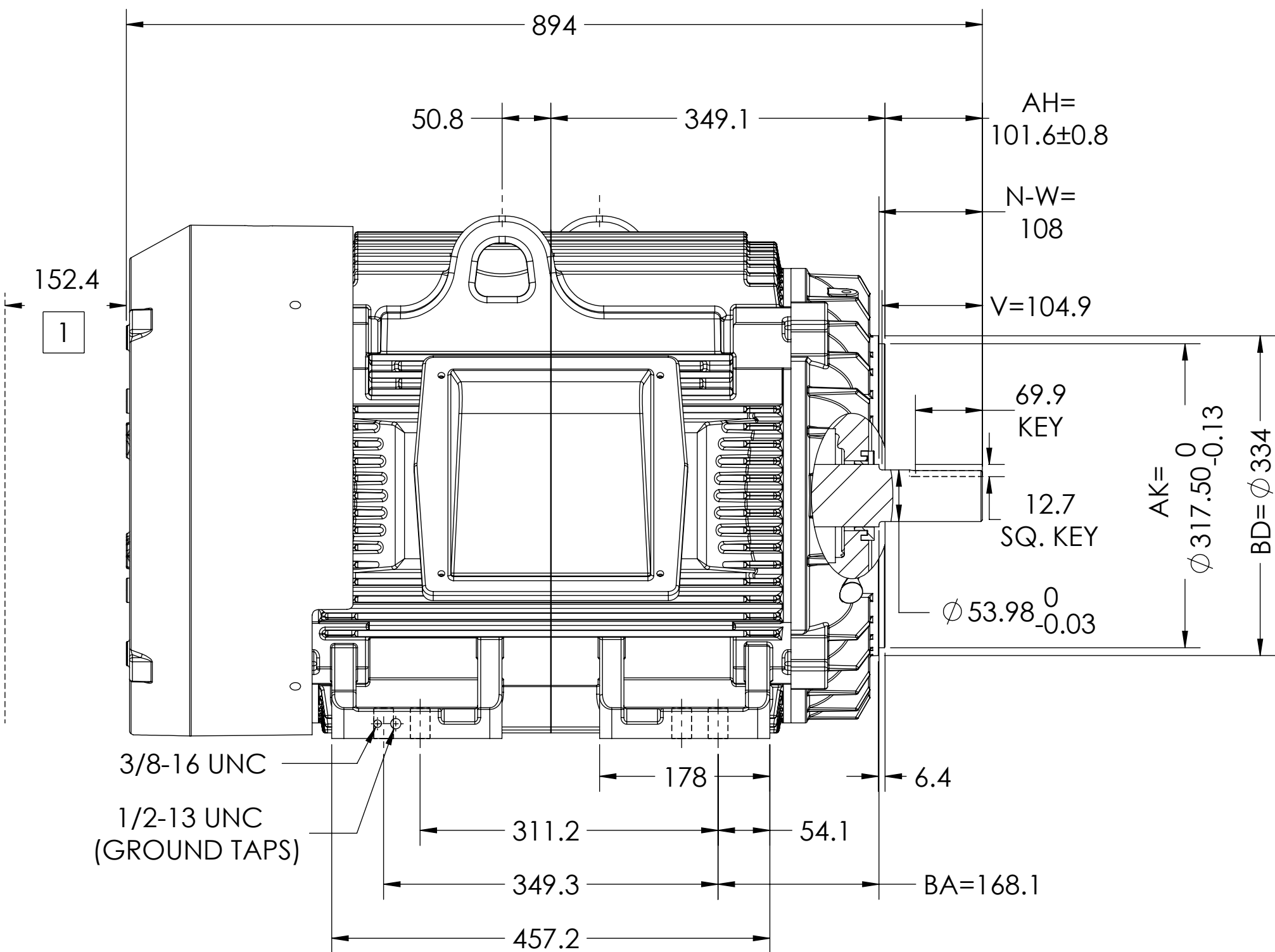
ENCLOSURE: TOTALLY ENCLOSED

COOLING: FAN COOLED

MOUNTING: FOOT, F-1

G405TSC/G404TSC FRAME MOUNTING HOLES

ENCLOSURE ENHANCEMENT: SEVERE DUTY



1 OBSTRUCTIONS MUST NOT ENCROACH ON AIR INLET.

MAX FACE RUNOUT AND FIT ECCENTRICITY = 0.178 T.I.R.
IF MOUNTING CLEARANCE DETAILS ARE REQUIRED, CONSULT FACTORY.
MAX PERMISSIBLE SHAFT RUNOUT WHEN MEASURED AT END OF STANDARD SHAFT EXTENSION IS .08 T.I.R.

DIMENSIONS ARE IN MILLIMETERS.
WEIGHT (KG): 612 ± 15 %
CUSTOMER IS RESPONSIBLE FOR DETERMINING THAT MOTOR PERFORMANCE IS SUITABLE IN THE APPLICATION.

REV. DESC: NEW DRAWING			
REV: -	VERSION: 00	REVISED: 11:18:22 12/12/2024	TDR: 000001239215
MODEL NO. 617437-732			REF:
BY: USJEDIL		Material:	C

BALDOR

G405/404TSC TEFC FOOT F1/CI BOX/TACONITE SEALS