

DUTY MASTER ALTERNATING CURRENT MOTORS

617431-560

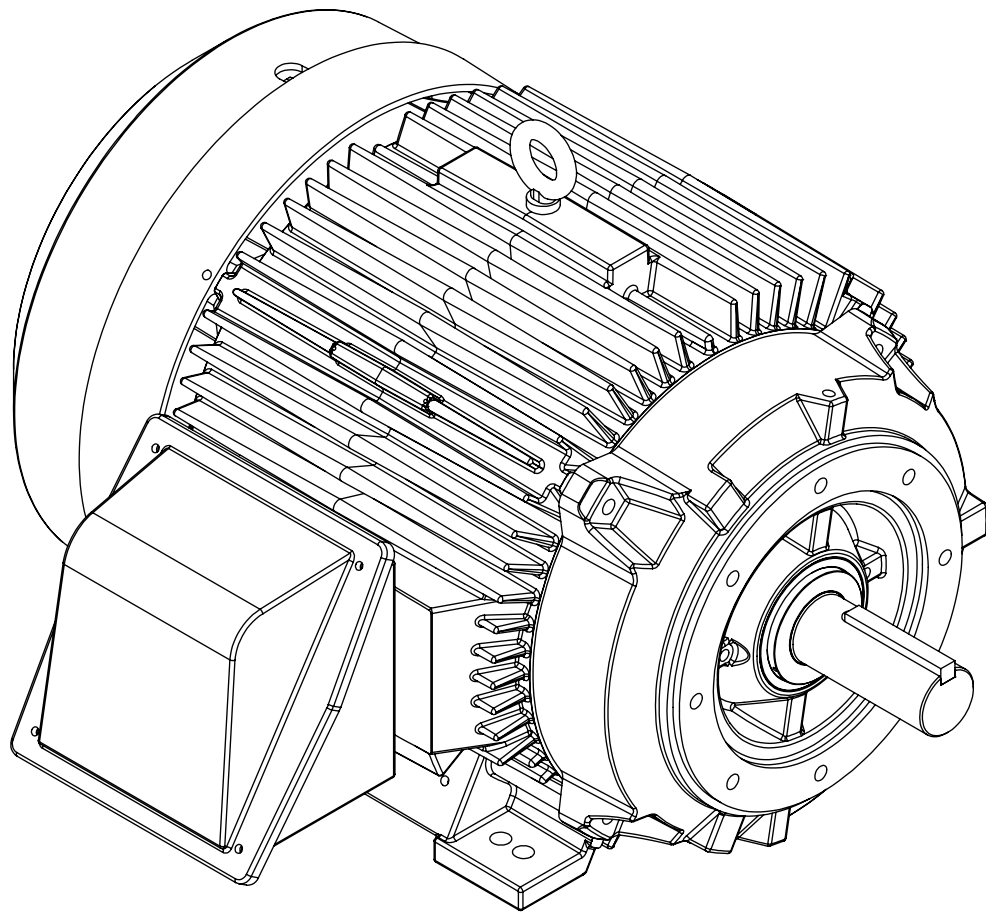
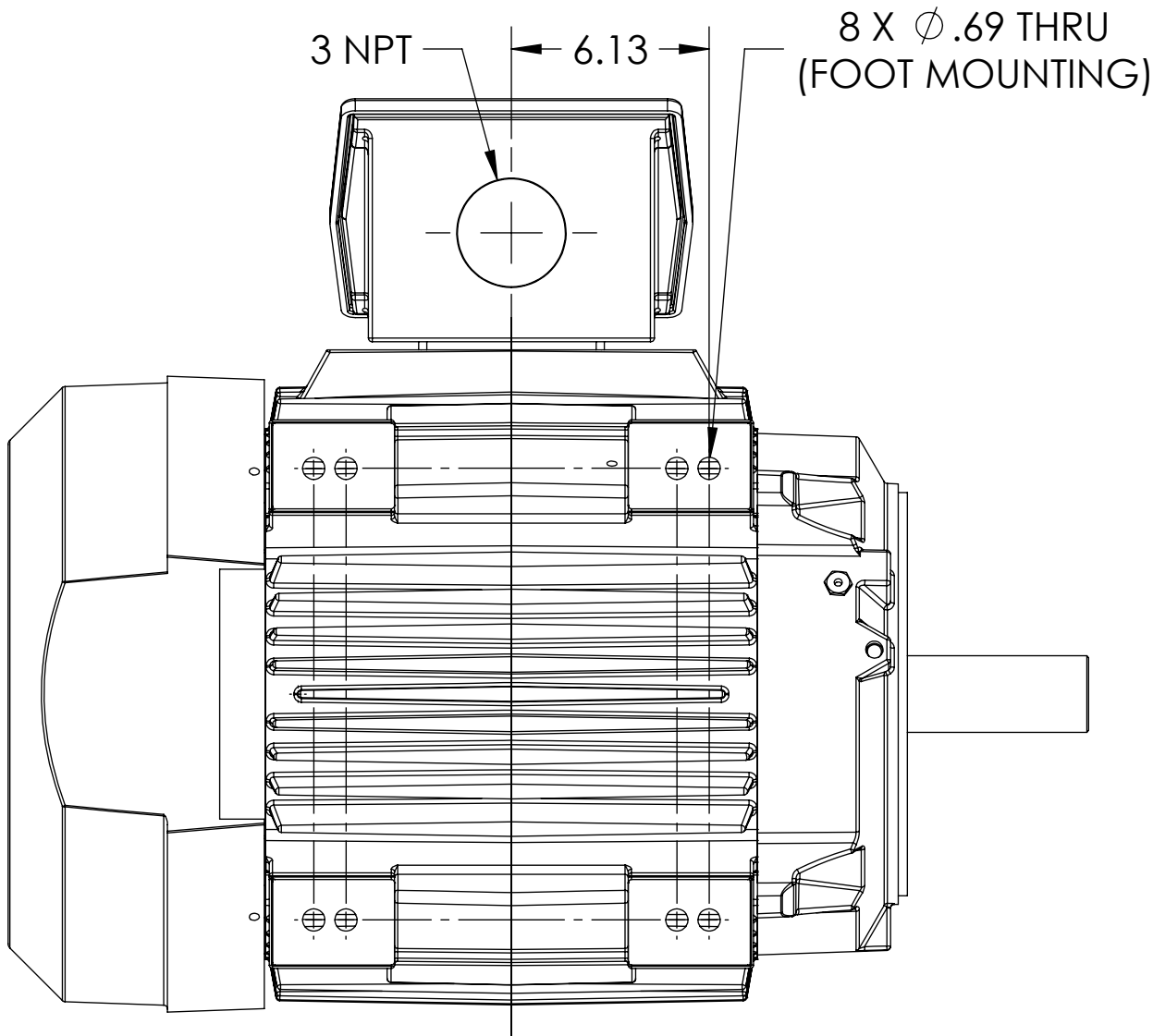
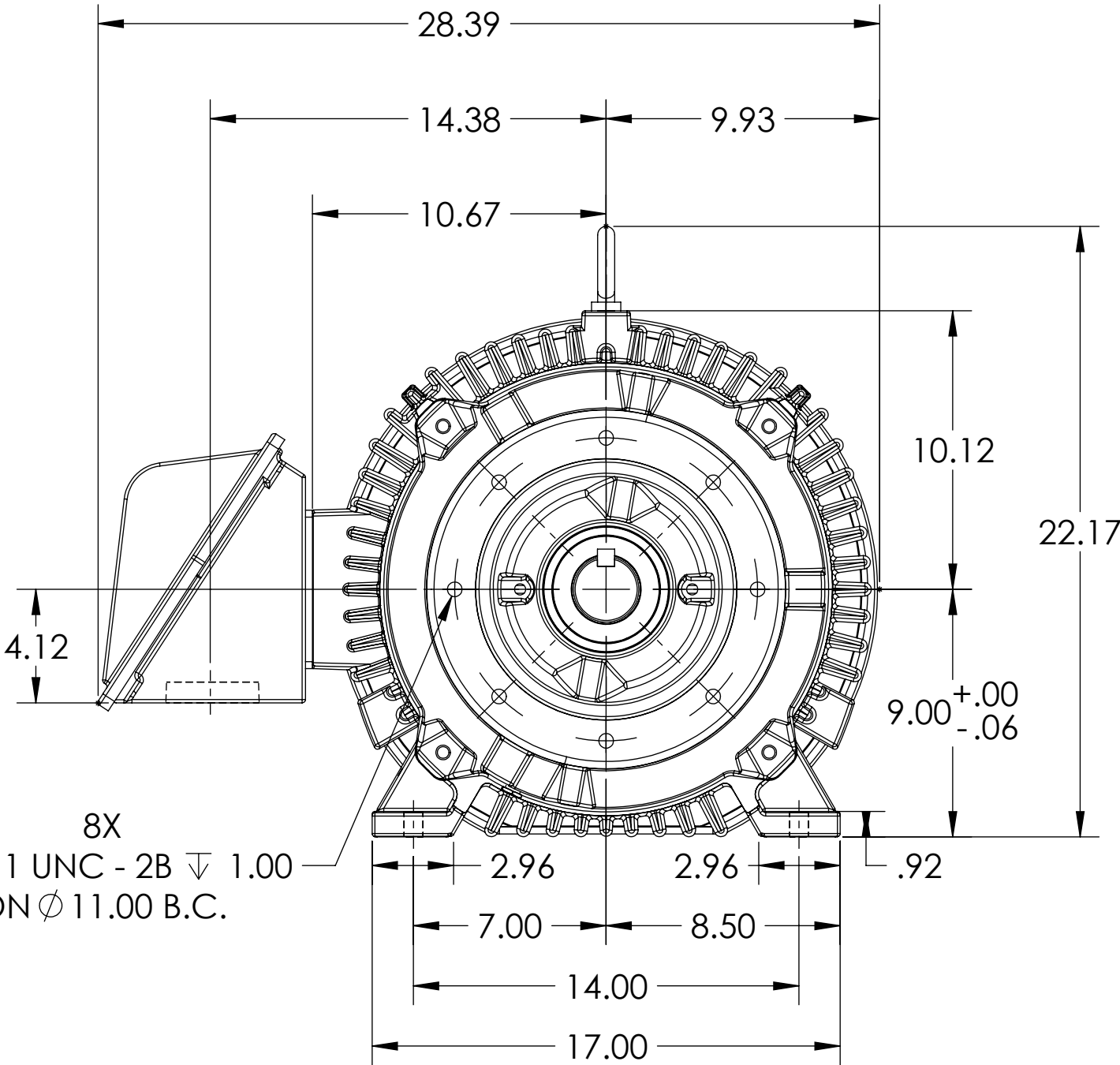
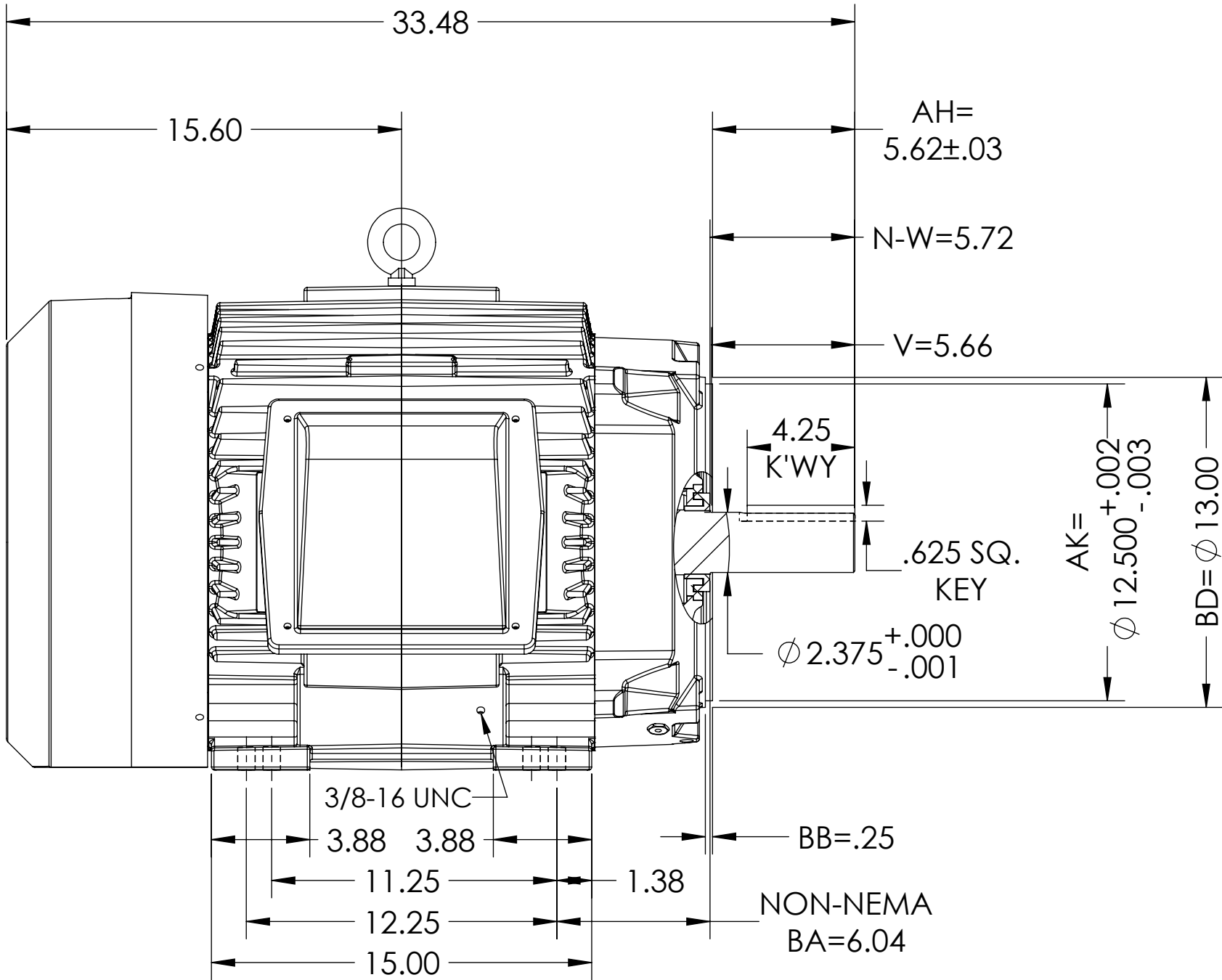
ENCLOSURE: TOTALLY ENCLOSED

SQUIRREL-CAGE INDUCTION
E364TC/E365TC FRAME DESIGN
TACONITE SEALS
DIV.2

COOLING: FAN COOLED

MOUNTING: FOOT, F-1

ENCLOSURE ENHANCEMENT: SEVERE DUTY



DIMENSIONS ARE IN INCHES.
WEIGHT (LBS.) 845, MAY VARY 15% DEPENDING ON RATING
CUSTOMER IS RESPONSIBLE FOR DETERMINING THAT MOTOR PERFORMANCE IS SUITABLE IN THE APPLICATION.

REV. DESC: UPDATE DS QUALITY			
REV: A	VERSION: 01	REVISED: 03:25:37 11/04/2024	TDR: 000001243642
MODEL NO. 617431-560			
BY: USJEDIL			

BALDOR

E365/364TC TEFC FOOT F1/CAST IRON BOX/TACONITE DIV. 2

SHEET NUMBER
1 OF 1

0917431-560

FACE RUNNOUT & ECCENTRICITY IS .007" MAX. T.I.R.
IF MOUNTING CLEARANCE DETAILS ARE REQUIRED, CONSULT FACTORY.
MAX PERMISSIBLE SHAFT RUNOUT WHEN MEASURED AT END OF STANDARD SHAFT EXTENSION IS .003" T.I.R.

617431-560