

DUTY MASTER ALTERNATING CURRENT MOTORS

617438-610

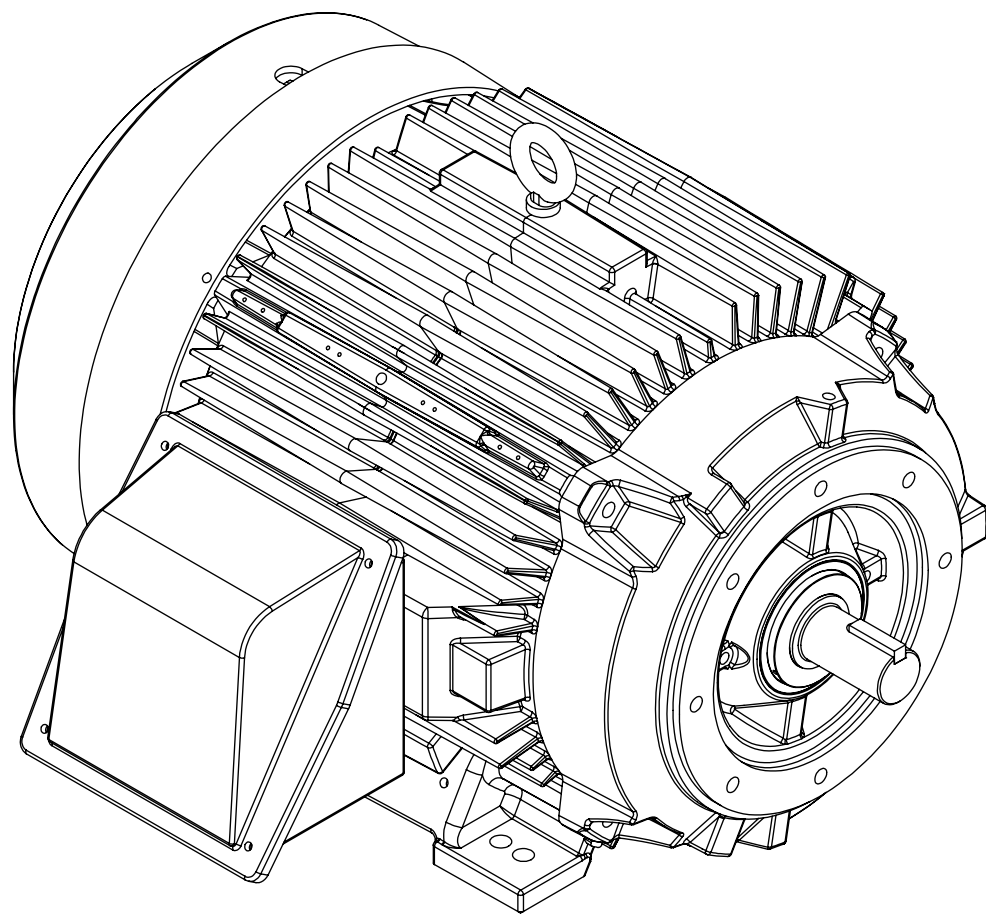
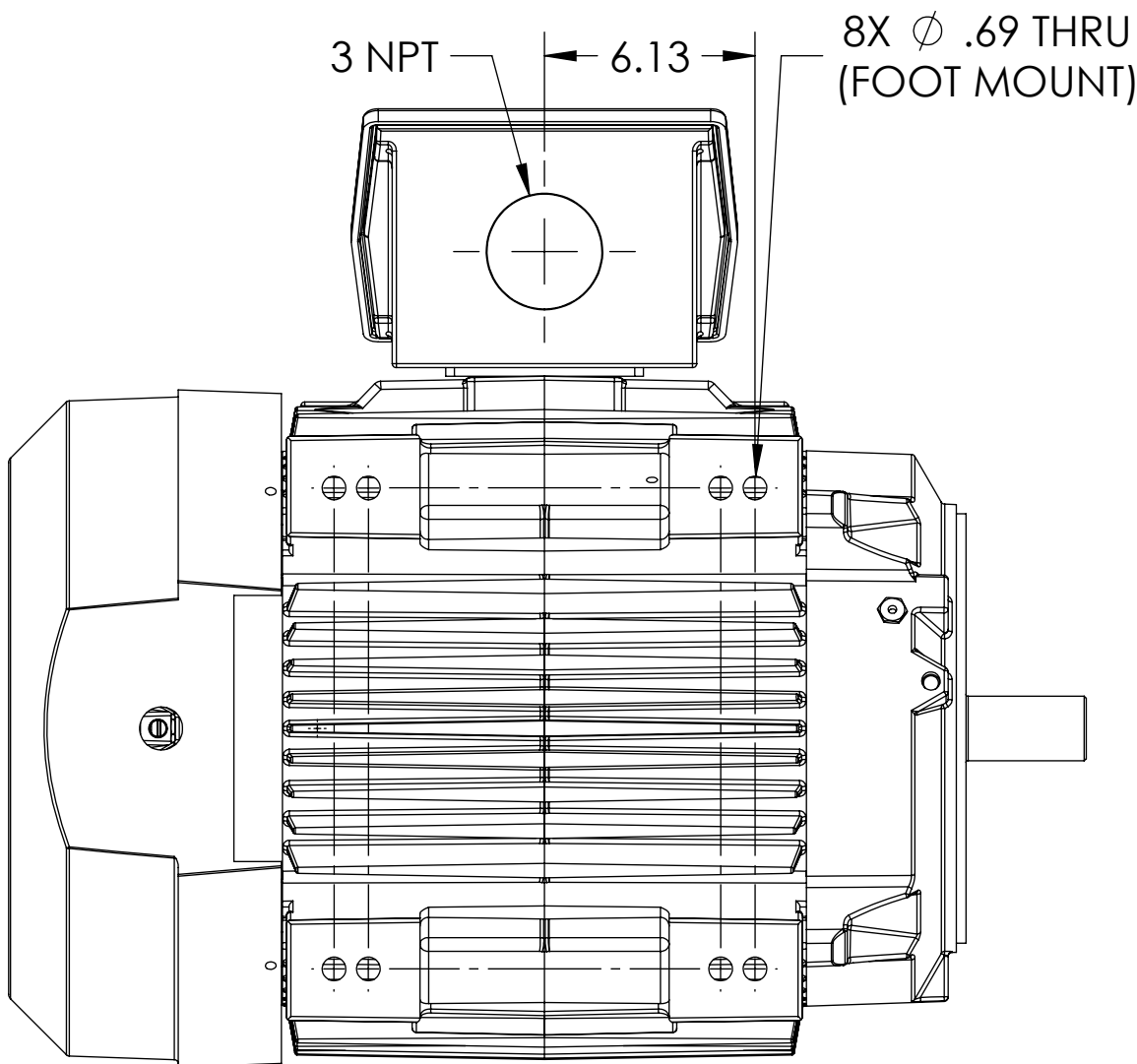
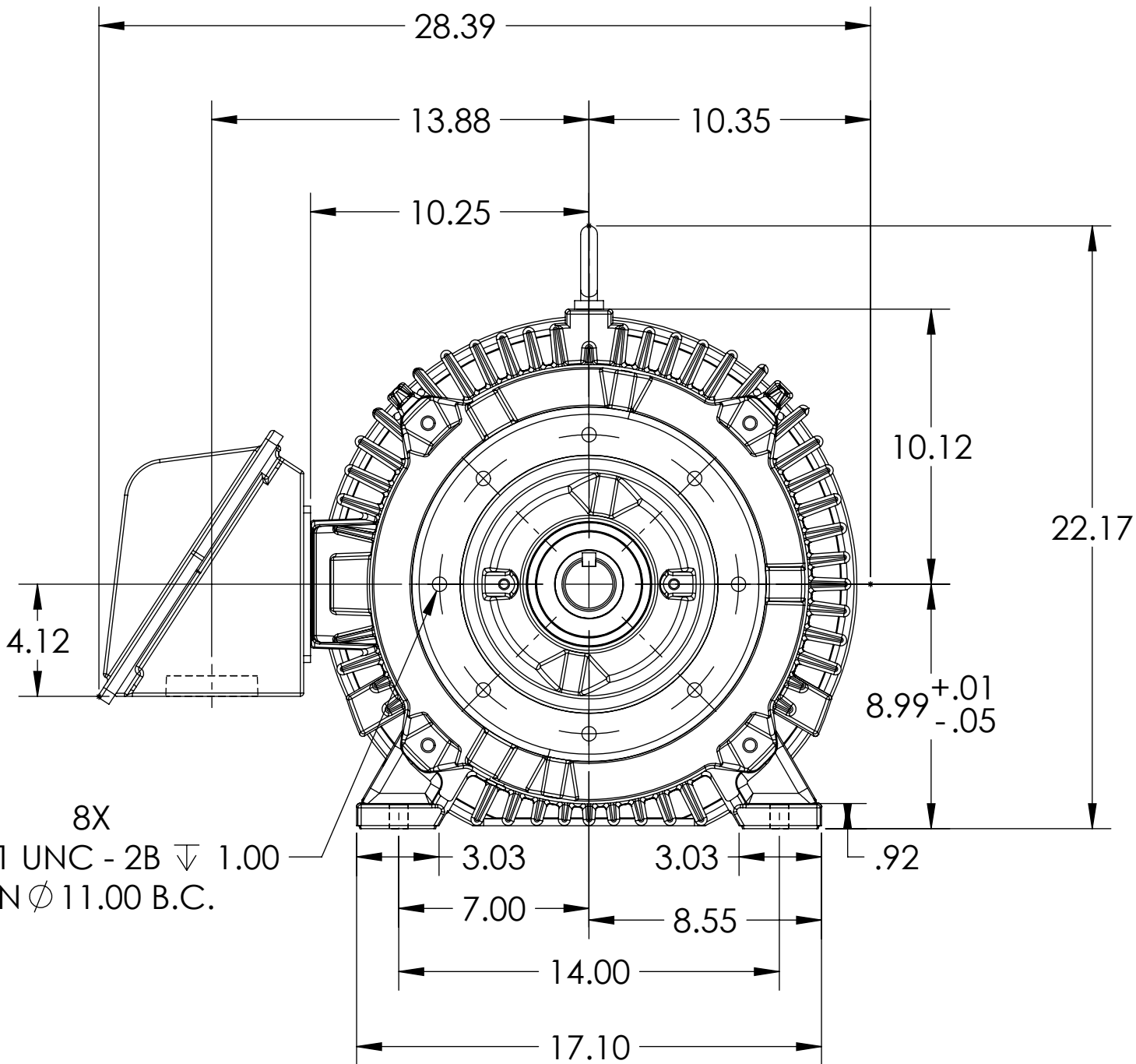
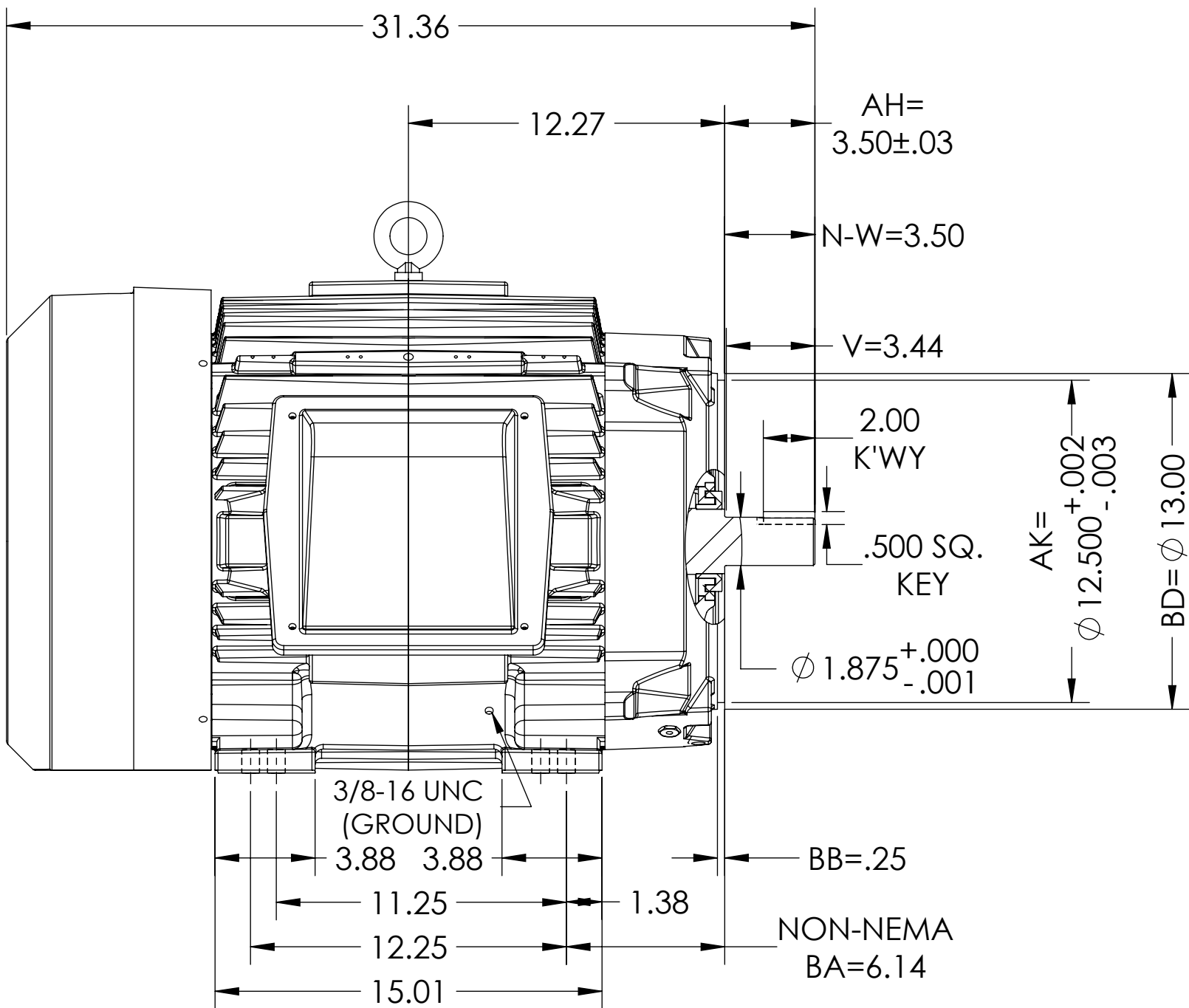
ENCLOSURE: TOTALLY ENCLOSED

SQUIRREL-CAGE INDUCTION
E364TSC/E365TSC FRAME DESIGN
TACONITE SEALS
DIV.2

COOLING: FAN COOLED

MOUNTING: FOOT, F-1

ENCLOSURE ENHANCEMENT: SEVERE DUTY



DIMENSIONS ARE IN INCHES.
WEIGHT (LBS.) 845, MAY VARY 15% DEPENDING ON RATING
CUSTOMER IS RESPONSIBLE FOR DETERMINING THAT MOTOR PERFORMANCE IS SUITABLE IN THE APPLICATION.

REV. DESC: NEW DRAWING			
REV: -	VERSION: 00	REVISED: 01:40:20 12/13/2024	TDR: 000001239215
MODEL NO. 617438-610			
BY: USJEDIL			

BALDOR

E365/364TSC TEFC FOOT F1/CAST IRON BOX/TACONITE DIV. 2

SHEET NUMBER
1 OF 1

617438-610

FACE RUNNOUT & ECCENTRICITY IS .007" MAX. T.I.R.
IF MOUNTING CLEARANCE DETAILS ARE REQUIRED, CONSULT FACTORY.
MAX PERMISSIBLE SHAFT RUNOUT WHEN MEASURED AT END OF STANDARD SHAFT EXTENSION IS .003" T.I.R.

617438-610