



Customer information packet

CSPM4104T

30HP, 1780RPM, 3PH, 60HZ, 286T, 1076M, TEFC, F1

Class - CLI GP A,B,C,D CLII GP F,G

Division - Division II

Specifications

Enclosure	TEFC
Frame	286T
Frame Material	Cast Iron
Frequency	60.00 Hz
Haz Area Class and Group	CLI GP A,B,C,D CLII GP F,G
Haz Area Division	Division II
Motor Letter Type	Three Phase
Output @ Frequency	30.000 HP @ 60 HZ
Phase	3
Synchronous Speed @ Frequency	1800 RPM @ 60 HZ
Voltage @ Frequency	460.0 V @ 60 HZ 230.0 V @ 60 HZ
Agency Approvals	CSA CURUSEEV NEMA_PREMIUM WEEE
Ambient Temperature	40 °C
Auxillary Box	No Auxillary Box
Auxillary Box Lead Termination	None
Base Indicator	Rigid
Bearing Grease Type	Polyrex EM (-20F +300F)
Blower	None
Current @ Voltage	35.000 A @ 460.0 V 70.000 A @ 230.0 V
Design Code	A
Drip Cover	No Drip Cover
Duty Rating	CONT
Efficiency @ 100% Load	94.5 %
Electrically Isolated Bearing	Not Electrically Isolated
Feedback Device	NO FEEDBACK
Front Shaft Indicator	None
Haz Area Temp Code	T3B

Part detail

Revision	-
Type	AC
Mech. spec.	10T015
Base	
Status	PRD/A
Elec. spec.	10WGZ889
Layout	10LYT015
Eff. date	01-14-2025
CD Diagram	CD0005
Poles	04
Leads	9#10 Y
Proprietary	False
Created date	11-05-2024

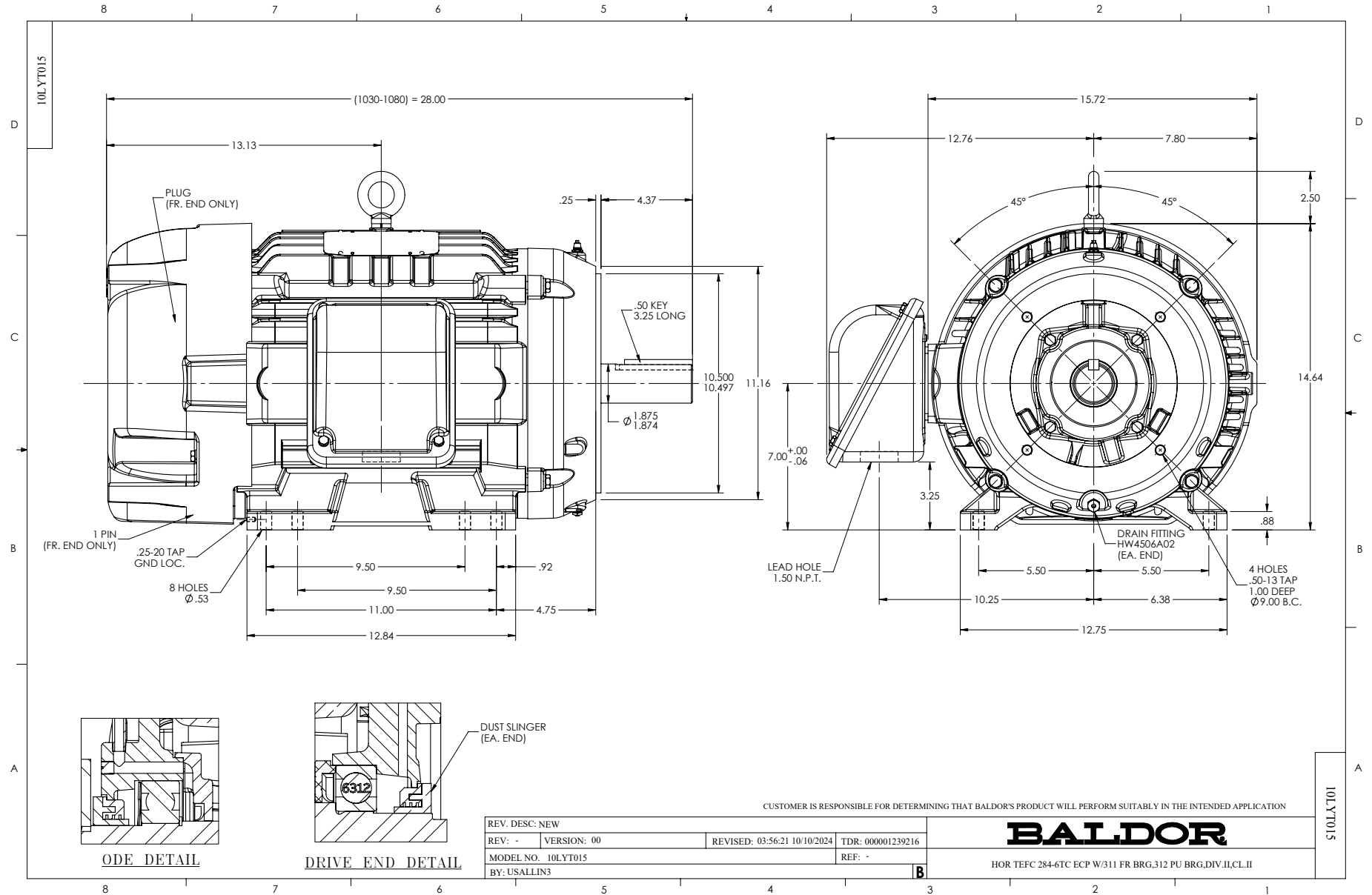
Heater Indicator	No Heater
High Voltage Full Load Amps	35.0 a
Insulation Class	F
Inverter Code	Inverter Duty
KVA Code	J
Lifting Lugs	Standard Lifting Lugs
Locked Bearing Indicator	Locked Bearing
Max Speed	2700 rpm
Motor Lead Quantity/Wire Size	9 @ 10 AWG
Motor Lead Termination	Flying Leads
Motor Standards	NEMA
Motor Type	1076M
Mounting Arrangement	F1
Number of Poles	4
Overall Length	28.00 IN
Power Factor	83
Product Family	Chemical Processing (Not DC)
Pulley End Bearing Type	Ball
Pulley Face Code	C-Face
Pulley Shaft Indicator	Standard
Rodent Screen	None
Service Factor	1.15
Shaft Diameter	1.875 IN
Shaft Ground Indicator	No Shaft Grounding
Shaft Rotation	Reversible
Shaft Slinger Indicator	No Slinger
Speed	1780 rpm
Speed Code	Single Speed
Starting Method	Direct on line
Thermal Device - Bearing	None
Thermal Device - Winding	None
Vibration Sensor Indicator	No Vibration Sensor
Winding Thermal 1	None
Winding Thermal 2	None

Nameplate

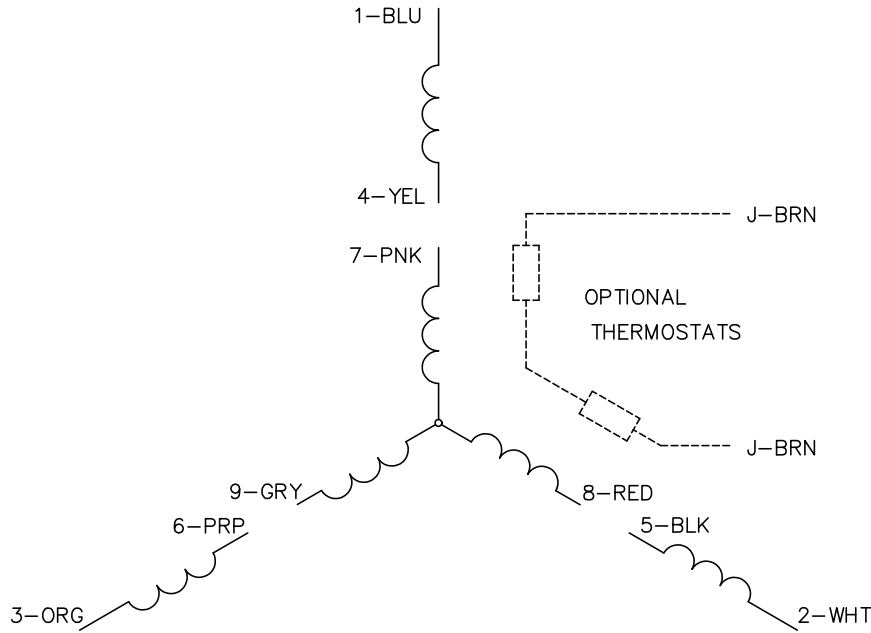
NP4439B01C23L

CAT #	CSPM4104T	SER #		CC	010A	WGT	490	LBS		
SPEC	10T015Z889	FRAME	286T	ENCL	TEFC	IP	55			
RATING	40C AMB-CONT			NEMA NOM. EFF	94.5					
HP	30	VOLTS	230/460							
AMPS	70/35		RPM	1780	HZ	60				
PH	3	CL	F	CODE	J	DES	A	PF	83 %	
DE BRG	6312		ODE BRG	6311		LUBE	POLYREX EM			
INV TYPE:	VPWM	SL HZ	0.8	CHP	60	TO	90	1.5:1		
WK2	6.97	LBFT2	MAX RPM	2700	CT	6	TO	60	10:1	
MAG CUR	24.4/12.2		VT	3	TO	60	20:1			
					MEETS INTENT OF IEEE-45		FOR WEATHER PROTECTION			
CL I DIV 2 GRPS A,B,C,D				TEMP CODE	T3C	CL I INV TEMP CODE		T3A	TEMP=	180
CL I ZONE 2 GRPS			IIA,IIB,IIC	TEMP =	160	CL II INV TEMP CODE		T3B	TEMP =	165
CL II DIV 2 GRPS F&G				TEMP CODE	T3B	1.0 SF ON PWM INVERTER		POWER		
CL II ZONE 22 GRPS IIIB				TEMP=	165					

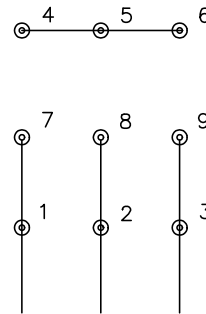
YR



CD0005

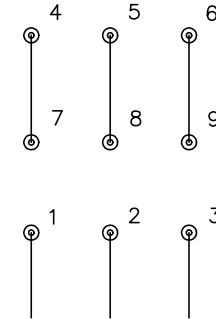


LOW VOLTAGE
(2Y)



LINE

HIGH VOLTAGE
(1Y)



LINE

NOTES:

1. INTERCHANGE ANY TWO LINE LEADS TO REVERSE ROTATION.
2. OPTIONAL THERMOSTATS ARE PROVIDED WHEN SPECIFIED.
3. ACTUAL NUMBER OF INTERNAL PARALLEL CIRCUITS MAY BE A MULTIPLE OF THOSE SHOWN ABOVE.
4. LEAD COLORS ARE OPTIONAL. LEADS MUST ALWAYS BE NUMBERED AS SHOWN.

CD0005

REV. DESC: REVISE TO SHOW OPTIONAL COLORS			
REV. LTR: E	BY: JLP	REVISED: 01/19/99 10:15	TDR: 0171435
S00000		FILE: AAA00005140	MDL: -
		MTL: -	

BALDOR ELECTRIC Co.

3PH, DV, 9 LEADS