

# ABB BALDOR RELIANCE III

---

## Customer information packet

### CSPM3713T

15HP, 3515RPM, 3PH, 60HZ, 215TC, 3756M, TEFC, F

Class - None

Division - Not Applicable

**Specifications**

<b>Enclosure</b>	TEFC
<b>Frame</b>	215TC
<b>Frame Material</b>	Steel
<b>Frequency</b>	60.00 Hz
<b>Haz Area Class and Group</b>	None
<b>Haz Area Division</b>	Not Applicable
<b>Motor Letter Type</b>	Three Phase
<b>Output @ Frequency</b>	15.000 HP @ 60 HZ
<b>Phase</b>	3
<b>Synchronous Speed @ Frequency</b>	3600 RPM @ 60 HZ
<b>Voltage @ Frequency</b>	230.0 V @ 60 HZ 460.0 V @ 60 HZ
<b>Agency Approvals</b>	WEEE NEMA PREMIUM 4
<b>Ambient Temperature</b>	40 °C
<b>Auxiliary Box</b>	NO AUXILLARY BOX
<b>Auxiliary Box Lead Termination</b>	None
<b>Base Indicator</b>	Rigid
<b>Bearing Grease Type</b>	Polyrex EM (-20F +300F)
<b>Blower</b>	None
<b>Current @ Voltage</b>	17.000 A @ 460.0 V 34.000 A @ 230.0 V
<b>Design Code</b>	A
<b>Drip Cover</b>	No Drip Cover
<b>Duty Rating</b>	CONT
<b>Efficiency @ 100% Load</b>	92.4 %
<b>Electrically Isolated Bearing</b>	Not Electrically Isolated
<b>Feedback Device</b>	NO FEEDBACK
<b>Front Shaft Indicator</b>	None
<b>Heater Indicator</b>	No Heater
<b>High Voltage Full Load Amps</b>	17.0 a
<b>Insulation Class</b>	F

**Part Detail**

<b>Revision</b>	B
<b>Type</b>	AC
<b>Mech. spec.</b>	37T655
<b>Base</b>	
<b>Status</b>	PRD/A
<b>Elec. spec.</b>	37WGR601
<b>Layout</b>	37LYT655
<b>Eff. date</b>	11-19-2025
<b>CD Diagram</b>	CD0180
<b>Poles</b>	02
<b>Leads</b>	9#14
<b>Proprietary</b>	False
<b>Created date</b>	11-29-2023

<b>Inverter Code</b>	<b>Inverter Duty</b>
<b>KVA Code</b>	<b>K</b>
<b>Lifting Lugs</b>	<b>Standard Lifting Lugs</b>
<b>Locked Bearing Indicator</b>	<b>Locked Bearing</b>
<b>Max Speed</b>	<b>5400 rpm</b>
<b>Motor Lead Quantity/Wire Size</b>	<b>9 @ 14 AWG</b>
<b>Motor Lead Termination</b>	<b>Flying Leads</b>
<b>Motor Standards</b>	<b>NEMA</b>
<b>Motor Type</b>	<b>3756M</b>
<b>Mounting Arrangement</b>	<b>F1</b>
<b>Number of Poles</b>	<b>2</b>
<b>Overall Length</b>	<b>21.25 IN</b>
<b>Power Factor</b>	<b>88</b>
<b>Product Family</b>	<b>General Purpose</b>
<b>Pulley End Bearing Type</b>	<b>Ball</b>
<b>Pulley Face Code</b>	<b>C-Face</b>
<b>Pulley Shaft Indicator</b>	<b>Standard</b>
<b>Rodent Screen</b>	<b>None</b>
<b>RoHS Status</b>	<b>ROHS COMPLIANT</b>
<b>Service Factor</b>	<b>1.15</b>
<b>Shaft Diameter</b>	<b>1.375 IN</b>
<b>Shaft Ground Indicator</b>	<b>No Shaft Grounding</b>
<b>Shaft Rotation</b>	<b>Reversible</b>
<b>Shaft Slinger Indicator</b>	<b>No Slinger</b>
<b>Speed</b>	<b>3515 rpm</b>
<b>Speed Code</b>	<b>Single Speed</b>
<b>Starting Method</b>	<b>Direct on line</b>
<b>Thermal Device - Bearing</b>	<b>None</b>
<b>Thermal Device - Winding</b>	<b>None</b>
<b>Vibration Sensor Indicator</b>	<b>No Vibration Sensor</b>
<b>Winding Thermal 1</b>	<b>None</b>
<b>Winding Thermal 2</b>	<b>None</b>

**Nameplate**

**NP4423A01A05L**

<b>CAT #</b>	CSPM3713T	<b>WGT</b>	187	<b>LBS</b>	
<b>SPEC</b>	37T655R601	<b>ENCL</b>	TEFC		
<b>SER #</b>		<b>CC</b>	010A	<b>IP</b>	54
<b>HP</b>	15	<b>MAG CUR</b>	11.6/5.8		
<b>VOLTS</b>	230/460	<b>NEMA NOM. EFF</b>	92.4		
<b>AMPS</b>	34/17	<b>PF</b>	88		
<b>RATING</b>	40C AMB-CONT				
<b>RPM</b>	3515	<b>MAX RPM</b>	5400		
<b>FRAME</b>	215TC	<b>HZ</b>	60	<b>CODE</b>	K
		<b>CLASS</b>	F		
<b>SER.F.</b>	1.15	<b>SF AMP</b>	39/19.5	<b>PH</b>	3
		<b>DES</b>	A		
<b>DE</b>	6307	<b>ODE</b>	6206		
<b>LUBRICATION</b>	POLYREX EM				
<b>ID LOGO</b>	<b>INVERTER TYPE</b>	<b>VPWM</b>	<b>CHP</b>	60	<b>TO</b>
				90	1.5:1
<b>ID LOGO</b>	<b>WK2</b>	0.51	<b>CT</b>	6	<b>TO</b>
				60	10:1
<b>ID LOGO</b>	<b>SL HZ</b>	1.4	<b>VT</b>	3	<b>TO</b>
				60	20:1
<b>YR</b>		<b>QR</b>			

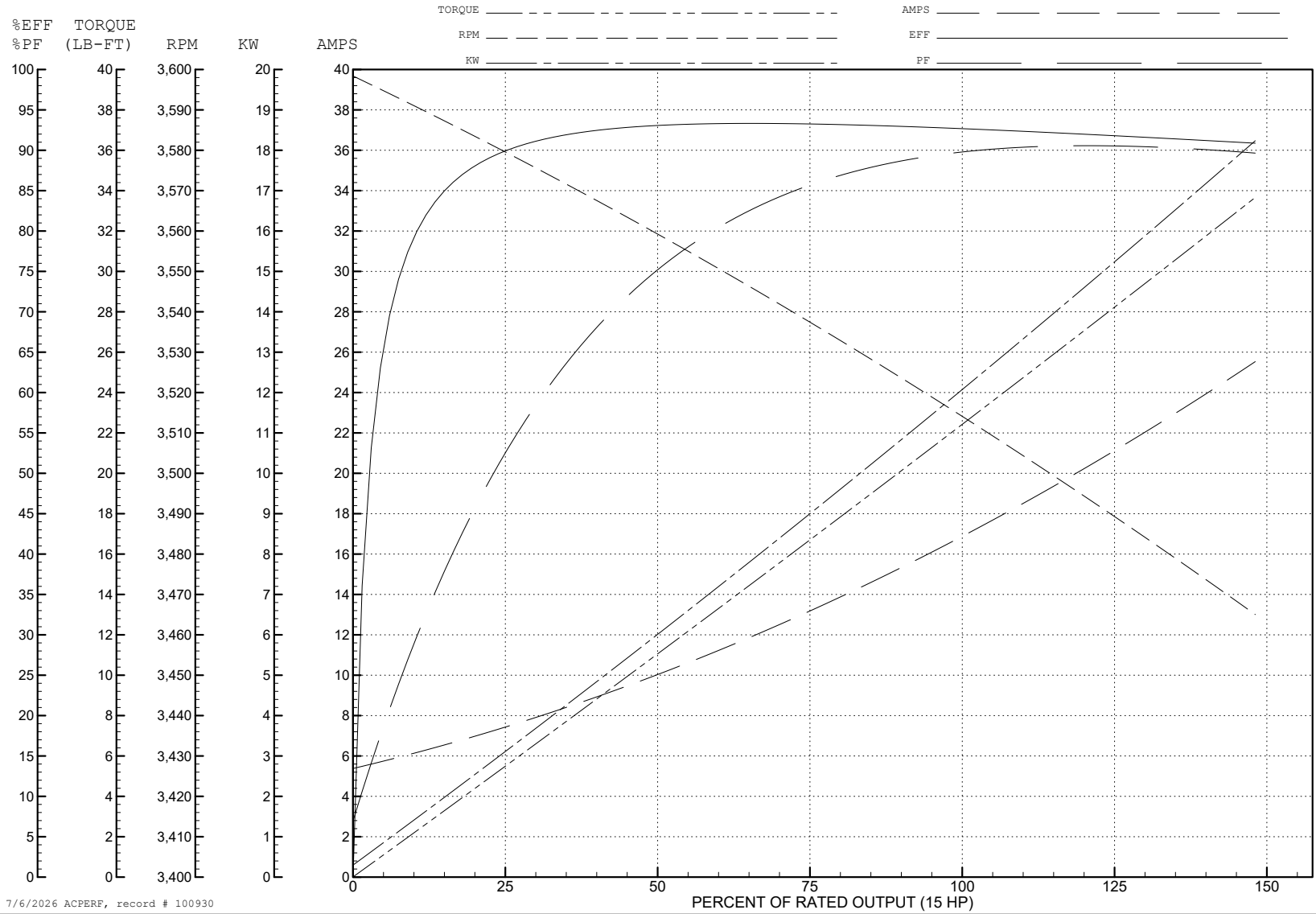
ABB Motors and Mechanical Inc.

WINDING # 37WGR601

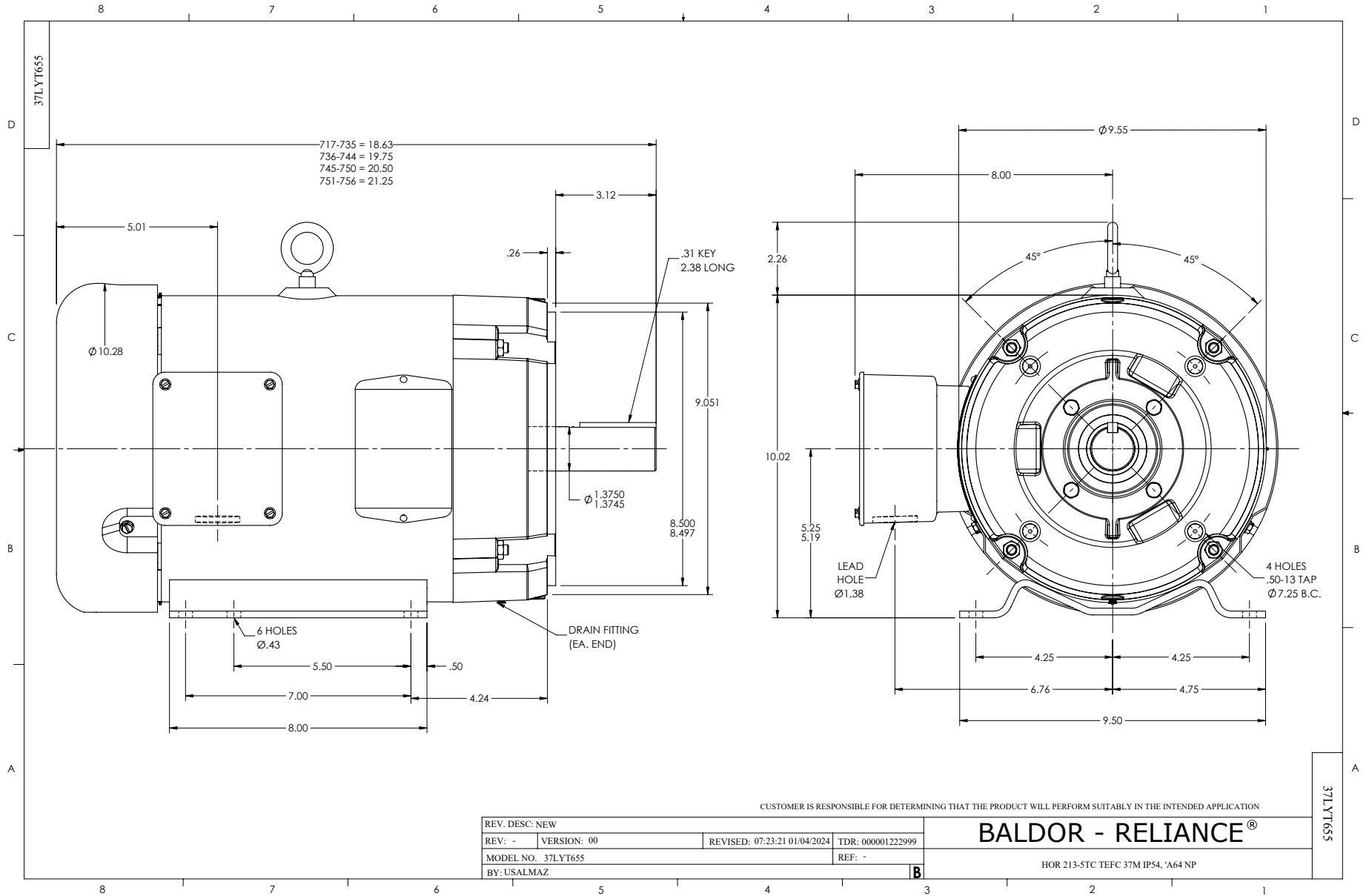
Typical performance - not guaranteed values.

15 HP 3 PH 60 HZ 3515 RPM 460 V 3756M

TORQUES (LB-FT): PO=112 PU=43.2 LR=62 LRA=161



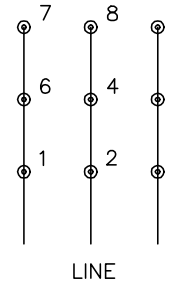
7/6/2026 ACPERF, record # 100930



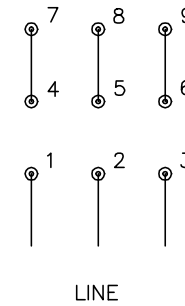
CD0180



LOW VOLTAGE  
(2D)



HIGH VOLTAGE  
(1D)



NOTES:

1. INTERCHANGE ANY TWO LINE LEADS TO REVERSE ROTATION.
2. OPTIONAL THERMOSTATS ARE PROVIDED WHEN SPECIFIED.
3. ACTUAL NUMBER OF INTERNAL PARALLEL CIRCUITS MAY BE A MULTIPLE OF THOSE SHOWN ABOVE.
4. LEAD COLORS ARE OPTIONAL. LEADS MUST ALWAYS BE NUMBERED AS SHOWN.

CD0180

REV. DESC: ADD CLASS CONN00000007		
REV. LTR: D	VERSION: 01	TDR: 000001099922
FILE: \AAA\00005\148	REVISED: 10: 25: 29 02/19/2019	BY: ENBRIRO
MTL: -	© □	

**BALDOR - RELIANCE®**

3PH, DV, 9 LEADS, DELTA CONNECTION

SH 1 of 1