

ABB BALDOR RELIANCE III

Customer information packet

CSPM3710T

7.5HP, 1775RPM, 3PH, 60HZ, 213TC, 3752M, TEFC

Class - None

Division - Not Applicable

Specifications

| | |
|---------------------------------------|---|
| Enclosure | TEFC |
| Frame | 213TC |
| Frame Material | Steel |
| Frequency | 60.00 Hz |
| Haz Area Class and Group | None |
| Haz Area Division | Not Applicable |
| Motor Letter Type | Three Phase |
| Output @ Frequency | 7.500 HP @ 60 HZ |
| Phase | 3 |
| Synchronous Speed @ Frequency | 1800 RPM @ 60 HZ |
| Voltage @ Frequency | 230.0 V @ 60 HZ 460.0 V @ 60 HZ |
| Agency Approvals | WEEE NEMA PREMIUM 4 |
| Ambient Temperature | 40 °C |
| Auxiliary Box | NO AUXILLARY BOX |
| Auxiliary Box Lead Termination | None |
| Base Indicator | Rigid |
| Bearing Grease Type | Polyrex EM (-20F +300F) |
| Blower | None |
| Current @ Voltage | 19.800 A @ 230.0 V 9.900 A @ 460.0 V |
| Design Code | A |
| Drip Cover | No Drip Cover |
| Duty Rating | CONT |
| Efficiency @ 100% Load | 92.4 % |
| Electrically Isolated Bearing | Not Electrically Isolated |
| Feedback Device | NO FEEDBACK |
| Front Shaft Indicator | None |
| Heater Indicator | No Heater |
| High Voltage Full Load Amps | 9.9 a |
| Insulation Class | F |

Part Detail

| | |
|---------------------|------------|
| Revision | B |
| Type | AC |
| Mech. spec. | 37T655 |
| Base | |
| Status | PRD/A |
| Elec. spec. | 37WGZ668 |
| Layout | 37LYT655 |
| Eff. date | 11-19-2025 |
| CD Diagram | CD0005 |
| Poles | 04 |
| Leads | 9#14 |
| Proprietary | False |
| Created date | 11-29-2023 |

| | |
|--------------------------------------|-----------------------|
| Inverter Code | Inverter Duty |
| KVA Code | L |
| Lifting Lugs | Standard Lifting Lugs |
| Locked Bearing Indicator | Locked Bearing |
| Max Speed | 2700 rpm |
| Motor Lead Quantity/Wire Size | 9 @ 14 AWG |
| Motor Lead Termination | Flying Leads |
| Motor Standards | NEMA |
| Motor Type | 3752M |
| Mounting Arrangement | F1 |
| Number of Poles | 4 |
| Overall Length | 21.25 IN |
| Power Factor | 76 |
| Product Family | General Purpose |
| Pulley End Bearing Type | Ball |
| Pulley Face Code | C-Face |
| Pulley Shaft Indicator | Standard |
| Rodent Screen | None |
| RoHS Status | ROHS COMPLIANT |
| Service Factor | 1.15 |
| Shaft Diameter | 1.375 IN |
| Shaft Ground Indicator | No Shaft Grounding |
| Shaft Rotation | Reversible |
| Shaft Slinger Indicator | No Slinger |
| Speed | 1775 rpm |
| Speed Code | Single Speed |
| Starting Method | Direct on line |
| Thermal Device - Bearing | None |
| Thermal Device - Winding | None |
| Vibration Sensor Indicator | No Vibration Sensor |
| Winding Thermal 1 | None |
| Winding Thermal 2 | None |

Nameplate

NP4423A01A01L

| | | | | | |
|--------------------|----------------------|----------------------|------------|-------------|-----------|
| CAT # | CSPM3710T | WGT | 165 | LBS | |
| SPEC | 37T655Z668 | ENCL | TEFC | | |
| SER # | | CC | 010A | IP | 54 |
| HP | 7.5 | MAG CUR | 10.6/5.3 | | |
| VOLTS | 230/460 | NEMA NOM. EFF | 92.4 | | |
| AMPS | 19.8/9.9 | PF | 76 | | |
| RATING | 40C AMB-CONT | | | | |
| RPM | 1775 | MAX RPM | 2700 | | |
| FRAME | 213TC | HZ | 60 | CODE | L |
| | | CLASS | F | | |
| SER.F. | 1.15 | SF AMP | 22.2/11.1 | PH | 3 |
| | | DES | A | | |
| DE | 6307 | ODE | 6206 | | |
| LUBRICATION | POLYREX EM | | | | |
| ID LOGO | INVERTER TYPE | VPWM | CHP | 60 | TO |
| | | | | 90 | 1.5:1 |
| ID LOGO | WK2 | 1.28 | CT | 6 | TO |
| | | | | 60 | 10:1 |
| ID LOGO | SL HZ | 0.8 | VT | 3 | TO |
| | | | | 60 | 20:1 |
| | | | | | |
| | | | | | |
| | | | | | |
| YR | | QR | | | |

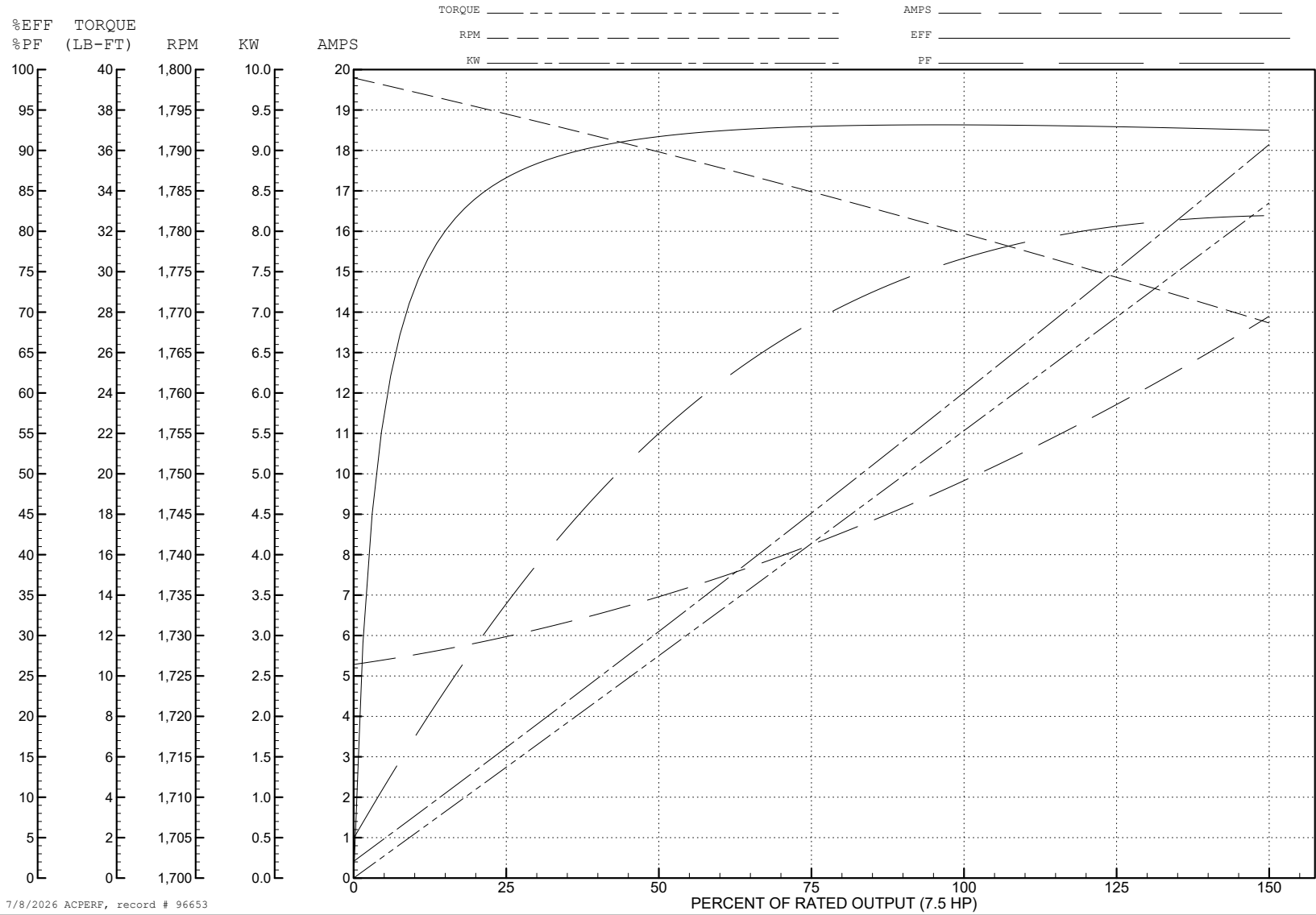
ABB Motors and Mechanical Inc.

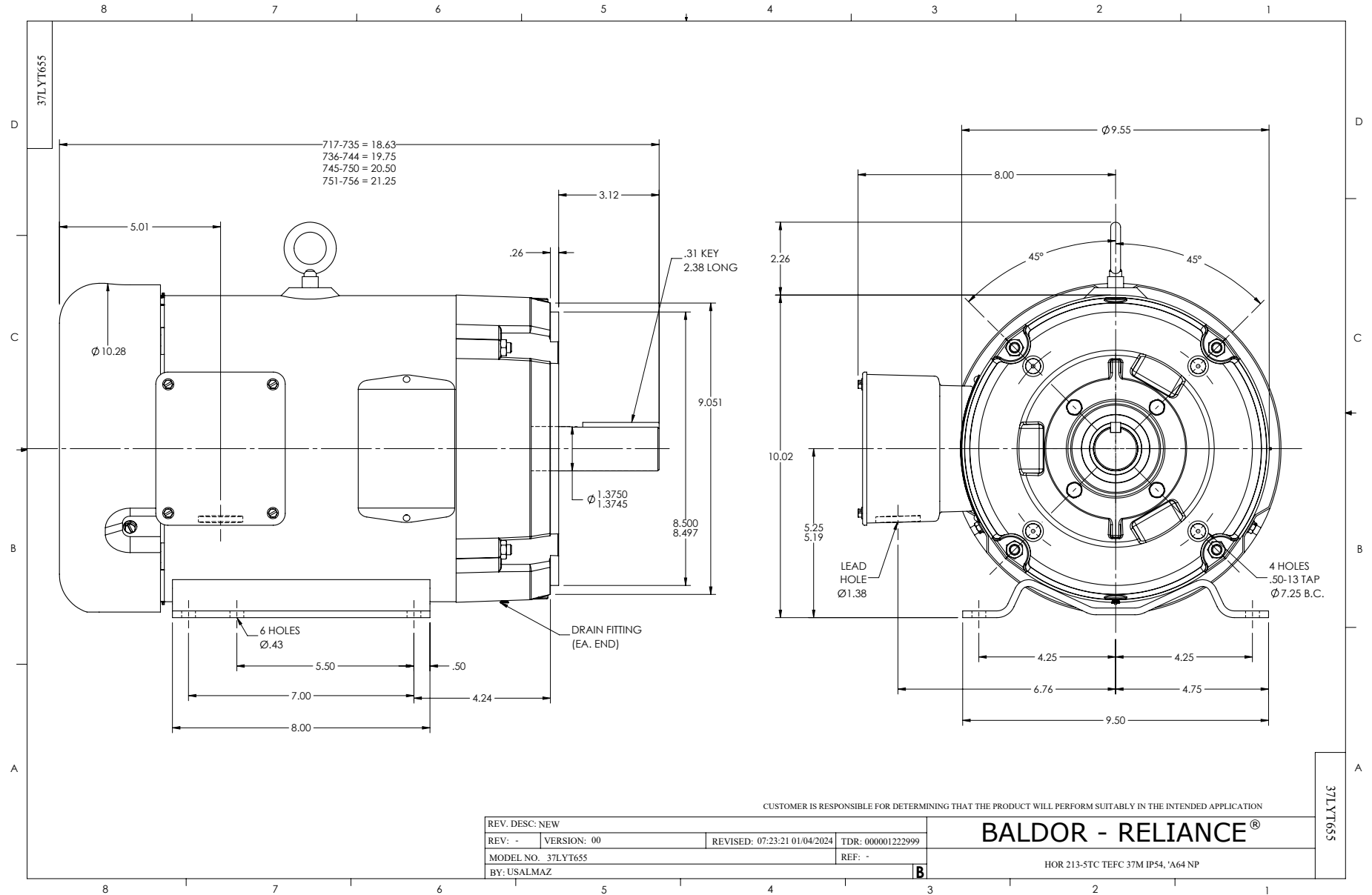
WINDING # 37WGZ668

Typical performance - not guaranteed values.

7.5 HP 3 PH 60 HZ 1775 RPM 460 V 3752M

TORQUES (LB-FT): PO=103 PU=44.6 LR=62.6 LRA=102





CD0005



LOW VOLTAGE
(2Y)



LINE

HIGH VOLTAGE
(1Y)



LINE

NOTES:

1. INTERCHANGE ANY TWO LINE LEADS TO REVERSE ROTATION.
2. OPTIONAL THERMOSTATS ARE PROVIDED WHEN SPECIFIED.
3. ACTUAL NUMBER OF INTERNAL PARALLEL CIRCUITS MAY BE A MULTIPLE OF THOSE SHOWN ABOVE.
4. LEAD COLORS ARE OPTIONAL. LEADS MUST ALWAYS BE NUMBERED AS SHOWN.

CD0005

REV. DESC: REVISE TO SHOW OPTIONAL COLORS

REV. LTR: E BY: JLP REVISED: 01/19/99 10:15 TDR: 0171435

500000

FILE: AAA00005140

MDL: -

MTL: -

BALDOR ELECTRIC Co.

3PH, DV, 9 LEADS