



Customer information packet

CSPM3704T

3HP, 1165RPM, 3PH, 60HZ, 213TC, 3740M, TEFC, F1

Class - None

Division - Not Applicable

Specifications

| | |
|--------------------------------|---|
| Enclosure | TEFC |
| Frame | 213TC |
| Frame Material | Steel |
| Frequency | 60.00 Hz |
| Haz Area Class and Group | None |
| Haz Area Division | Not Applicable |
| Motor Letter Type | Three Phase |
| Output @ Frequency | 3.000 HP @ 60 HZ |
| Phase | 3 |
| Synchronous Speed @ Frequency | 1200 RPM @ 60 HZ |
| Voltage @ Frequency | 460.0 V @ 60 HZ 230.0 V @ 60 HZ |
| Agency Approvals | CURUSEEV NEMA_PREMIUM WEEE |
| Ambient Temperature | 40 °C |
| Auxillary Box | No Auxillary Box |
| Auxillary Box Lead Termination | None |
| Base Indicator | Rigid |
| Bearing Grease Type | Polyrex EM (-20F +300F) |
| Blower | None |
| Current @ Voltage | 9.000 A @ 230.0 V 9.800 A @ 208.0 V 4.500 A @ 460.0 V |
| Design Code | B |
| Drip Cover | No Drip Cover |
| Duty Rating | CONT |
| Efficiency @ 100% Load | 90.2 % |
| Electrically Isolated Bearing | Not Electrically Isolated |
| Feedback Device | NO FEEDBACK |
| Front Shaft Indicator | None |
| Heater Indicator | No Heater |

Part detail

| | |
|--------------|------------|
| Revision | - |
| Type | AC |
| Mech. spec. | 37T655 |
| Base | |
| Status | PRD/A |
| Elec. spec. | 37WGT976 |
| Layout | 37LYT655 |
| Eff. date | 08-09-2024 |
| CD Diagram | CD0005 |
| Poles | 06 |
| Leads | 9#14 |
| Proprietary | False |
| Created date | 11-29-2023 |

| | |
|-------------------------------|-----------------------|
| High Voltage Full Load Amps | 4.5 a |
| Insulation Class | F |
| Inverter Code | Inverter Duty |
| KVA Code | K |
| Lifting Lugs | Standard Lifting Lugs |
| Locked Bearing Indicator | Locked Bearing |
| Max Speed | 1800 rpm |
| Motor Lead Quantity/Wire Size | 9 @ 14 AWG |
| Motor Lead Termination | Flying Leads |
| Motor Standards | NEMA |
| Motor Type | 3740M |
| Mounting Arrangement | F1 |
| Number of Poles | 6 |
| Overall Length | 19.75 IN |
| Power Factor | 70 |
| Product Family | General Purpose |
| Pulley End Bearing Type | Ball |
| Pulley Face Code | C-Face |
| Pulley Shaft Indicator | Standard |
| Rodent Screen | None |
| RoHS Status | ROHS COMPLIANT |
| Service Factor | 1.15 |
| Shaft Diameter | 1.375 IN |
| Shaft Ground Indicator | No Shaft Grounding |
| Shaft Rotation | Reversible |
| Shaft Slinger Indicator | No Slinger |
| Speed | 1165 rpm |
| Speed Code | Single Speed |
| Starting Method | Direct on line |
| Thermal Device - Bearing | None |
| Thermal Device - Winding | None |
| Vibration Sensor Indicator | No Vibration Sensor |
| Winding Thermal 1 | None |
| Winding Thermal 2 | None |

Nameplate

| NP4423A01A01L | | | | | | | | | |
|--------------------|----------------------|----------------|------------|----------------------|-----------|--------------|------------|---|--|
| CAT # | CSPM3704T | | | WGT | 127 | LBS | | | |
| SPEC | 37T655T976 | | | ENCL | TEFC | | | | |
| SER # | | | | CC | 010A | IP | 54 | | |
| HP | 3 | MAG CUR | 5/2.5 | | | | | | |
| VOLTS | 230/460 | | | NEMA NOM. EFF | 90.2 | | | | |
| AMPS | 9/4.5 | | | PF | 70 | | | | |
| RATING | 40C AMB-CONT | | | | | | | | |
| RPM | 1165 | | | MAX RPM | 1800 | | | | |
| FRAME | 213TC | HZ | 60 | CODE | K | CLASS | F | | |
| SER.F. | 1.15 | SF AMP | 10/5 | | PH | 3 | DES | B | |
| DE | 6307 | | ODE | 6206 | | | | | |
| LUBRICATION | POLYREX EM | | | | | | | | |
| ID LOGO | INVERTER TYPE | VPWM | CHP | 60 | TO | 90 | 1.5:1 | | |
| ID LOGO | WK2 | 0.99 | CT | 6 | TO | 60 | 10:1 | | |
| ID LOGO | SL HZ | 1.75 | VT | 3 | TO | 60 | 20:1 | | |
| | | | | QR | | | | | |
| YR | | | | | | | | | |

AC Induction Motor Performance Data

Record # 22165

Typical performance - not guaranteed values

| Winding: 37WGT976-R001 | | Type: 3740M | | Enclosure: TEFC | |
|-------------------------------|-------------------|--------------------|--|------------------------|--------------------------|
| Nameplate Data | | | 460 V, 60 Hz: High Voltage Connection | | |
| Rated Output (HP) | | 3 | Full Load Torque | | 13.48 LB-FT |
| Volts | | 230/460 | Start Configuration | | direct on line |
| Full Load Amps | | 9.0/4.5 | Breakdown Torque | | 48.19 LB-FT |
| R.P.M. | | 1165 | Pull-up Torque | | 32.33 LB-FT |
| Hz | 60 Phase | 3 | Locked-rotor Torque | | 39.06 LB-FT |
| NEMA Design Code | A KVA Code | K | Starting Current | | 33.81 A |
| Service Factor (S.F.) | | 1.15 | No-load Current | | 2.48 A |
| NEMA Nom. Eff. | 90.2 Power Factor | 70 | Line-line Res. @ 25°C | | 2.44 Ω |
| Rating - Duty | | 40C AMB-CONT | Temp. Rise @ Rated Load | | 34°C |
| S.F. Amps | | | Temp. Rise @ S.F. Load | | 40°C |
| | | | Locked-rotor Power Factor | | 22.4 |
| | | | Rotor inertia | | 0.995 LB-FT ² |

Load Characteristics 460 V, 60 Hz, 3 HP

| % of Rated Load | 25 | 50 | 75 | 100 | 125 | 150 | S.F. |
|------------------------|-----------|-----------|-----------|------------|------------|------------|-------------|
| Power Factor | 32 | 50 | 62 | 69 | 73 | 76 | 72 |
| Efficiency | 81.8 | 88.7 | 90.4 | 90.2 | 89.6 | 87.7 | 89.7 |
| Speed | 1191 | 1184 | 1177 | 1170 | 1160 | 1150 | 1163 |
| Line amperes | 2.69 | 3.14 | 3.77 | 4.5 | 5.36 | 6.34 | 4.99 |

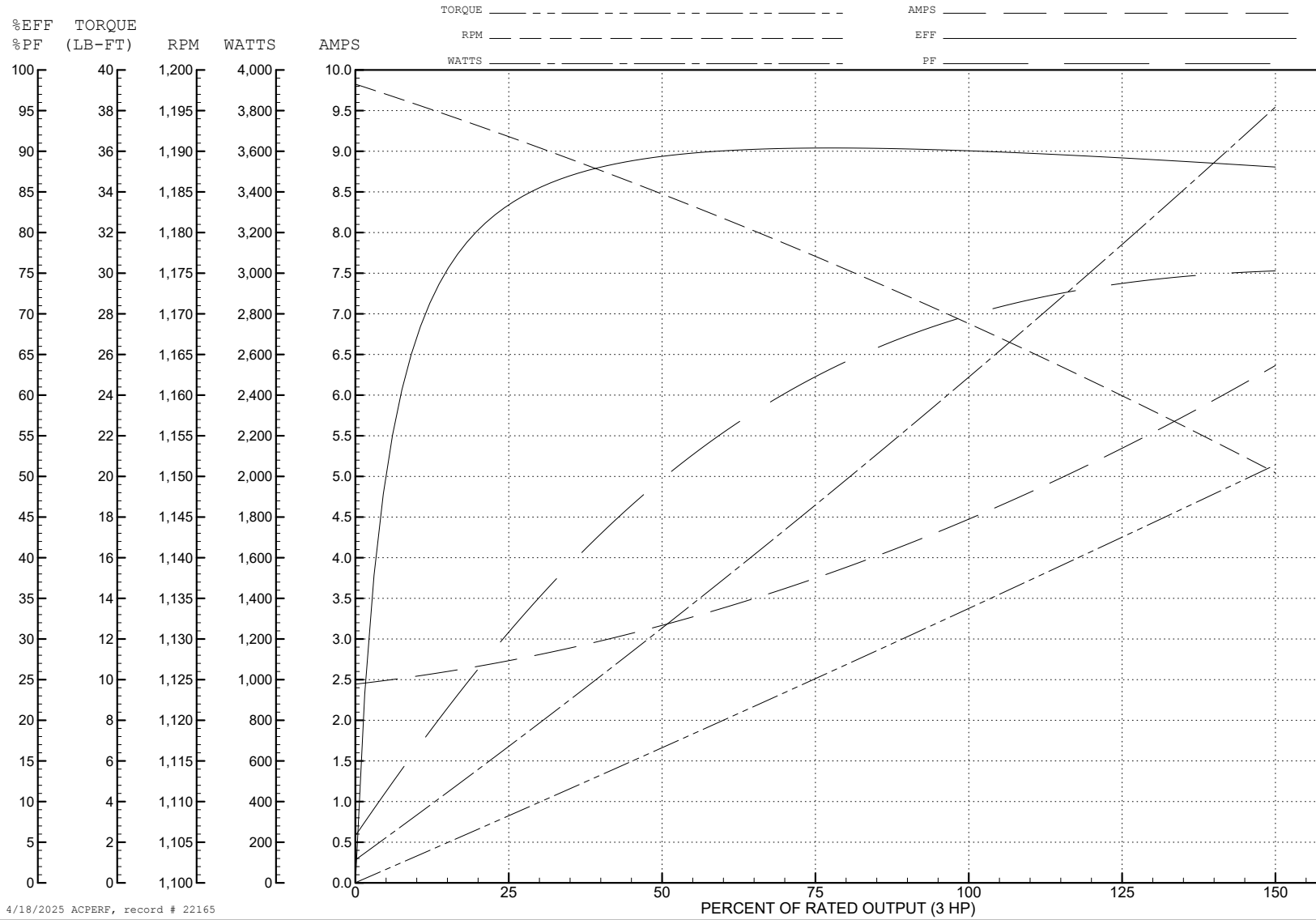
ABB Motors and Mechanical Inc.

WINDING # 37WGT976

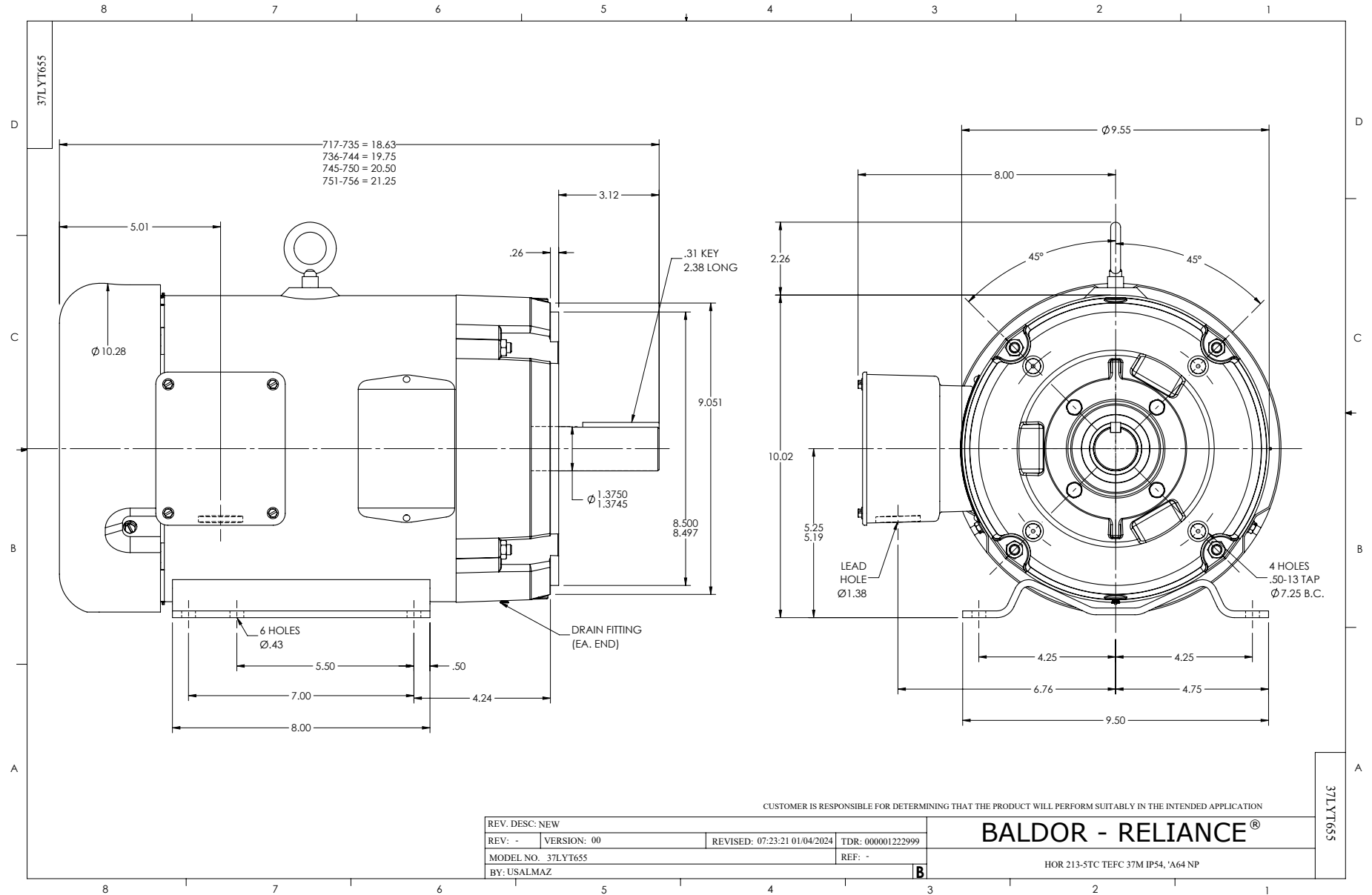
3 HP 3 PH 60 HZ 1165 RPM 460 V 3740M

Typical performance - not guaranteed values.

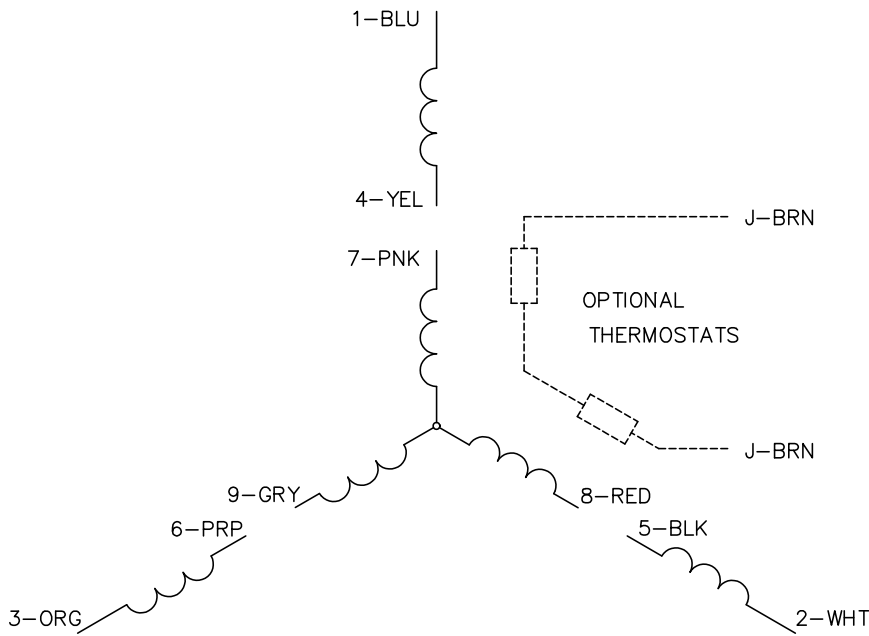
TORQUES (LB-FT): PO=48.19 PU=32.33 LR=39.06 LRA=33.81



4/18/2025 ACPERF, record # 22165



CD0005



LOW VOLTAGE
(2Y)



LINE

HIGH VOLTAGE
(1Y)



LINE

NOTES:

1. INTERCHANGE ANY TWO LINE LEADS TO REVERSE ROTATION.
2. OPTIONAL THERMOSTATS ARE PROVIDED WHEN SPECIFIED.
3. ACTUAL NUMBER OF INTERNAL PARALLEL CIRCUITS MAY BE A MULTIPLE OF THOSE SHOWN ABOVE.
4. LEAD COLORS ARE OPTIONAL. LEADS MUST ALWAYS BE NUMBERED AS SHOWN.

CD0005

| | | | |
|---|---------|-------------------------|--------------|
| REV. DESC: REVISE TO SHOW OPTIONAL COLORS | | | |
| REV. LTR: E | BY: JLP | REVISED: 01/19/99 10:15 | TDR: 0171435 |
| S00000 | | FILE: AAA00005140 | MDL: - |
| | | MTL: - | |

BALDOR ELECTRIC Co.

3PH, DV, 9 LEADS