



Customer information packet

CSPM3611T

3HP, 1800RPM, 3PH, 60HZ, 182TC, 3544M, TEFC, F3

Class - None

Division - Not Applicable

Specifications

Enclosure	TEFC
Frame	182TC
Frame Material	Steel
Frequency	60.00 Hz
Haz Area Class and Group	None
Haz Area Division	Not Applicable
Motor Letter Type	Three Phase
Output @ Frequency	3.000 HP @ 60 HZ
Phase	3
Synchronous Speed @ Frequency	1800 RPM @ 60 HZ
Voltage @ Frequency	230.0 V @ 60 HZ 460.0 V @ 60 HZ
Agency Approvals	UR CSA
Ambient Temperature	40 °C
Auxillary Box	No Auxillary Box
Auxillary Box Lead Termination	None
Base Indicator	Rigid
Bearing Grease Type	Polyrex EM (-20F +300F)
Blower	None
Current @ Voltage	4.000 A @ 460.0 V 8.000 A @ 230.0 V
Drip Cover	No Drip Cover
Duty Rating	CONT
Efficiency @ 100% Load	89.5 %
Electrically Isolated Bearing	Not Electrically Isolated
Feedback Device	NO FEEDBACK
Front Face Code	Standard
Front Shaft Indicator	None
Heater Indicator	No Heater
High Voltage Full Load Amps	4.0 a
Insulation Class	F

Part detail

Revision	W
Type	AC
Mech. spec.	35X060
Base	
Status	PRD/A
Elec. spec.	35WGM362
Layout	35LYX060
Eff. date	04-16-2024
CD Diagram	CD0005
Poles	04
Leads	9#18
Proprietary	False
Created date	07-21-2009

Inverter Code	Inverter Ready
KVA Code	J
Lifting Lugs	No Lifting Lugs
Locked Bearing Indicator	Locked Bearing
Motor Lead Exit	Ko Box
Motor Lead Quantity/Wire Size	9 @ 18 AWG
Motor Lead Termination	Flying Leads
Motor Standards	NEMA
Motor Type	3544M
Mounting Arrangement	F3
Number of Poles	4
Overall Length	16.56 IN
Power Factor	89
Product Family	General Purpose
Pulley End Bearing Type	Ball
Pulley Face Code	C-Face
Pulley Shaft Indicator	Standard
Rodent Screen	None
Service Factor	1.00
Shaft Diameter	1.125 IN
Shaft Extension Location	Pulley End
Shaft Ground Indicator	No Shaft Grounding
Shaft Rotation	Reversible
Shaft Slinger Indicator	No Slinger
Speed	1800 rpm
Speed Code	Single Speed
Starting Method	Direct on line
Thermal Device - Bearing	None
Thermal Device - Winding	None
Vibration Sensor Indicator	No Vibration Sensor
Winding Thermal 1	None
Winding Thermal 2	None

Nameplate

NP1256L									
CAT.NO.	CSPM3611T								
SPEC.	35X060M362G1								
HP	3								
VOLTS	230/460								
AMP	8/4								
RPM	1800								
FRAME	182TC		HZ	60		PH	3		
SER.F.	1.00	CODE	J	DES	-	CLASS	F		
NEMA-NOM-EFF	89.5	PF	89						
RATING	40C AMB-CONT								
CC									
DE	6206		ODE	6203					
ENCL	TEFC	SN							
	CSPM3611T								

AC Induction Motor Performance Data

Record # 29272

Typical performance - not guaranteed values

Winding: 35WGM362-R001		Type: 3544M		Enclosure: TEFC	
Nameplate Data			460 V, 60 Hz: High Voltage Connection		
Rated Output (HP)	3	Full Load Torque	8.74 LB-FT		
Volts	230/460	Start Configuration	direct on line		
Full Load Amps	8/4	Breakdown Torque	26 LB-FT		
R.P.M.	1800	Pull-up Torque	21 LB-FT		
Hz	60 Phase	3	Locked-rotor Torque	25 LB-FT	
NEMA Design Code	- KVA Code	J	Starting Current	30 A	
Service Factor (S.F.)		1	No-load Current	2.25 A	
NEMA Nom. Eff.	89.5 Power Factor	89	Line-line Res. @ 25°C	4.4125 Ω	
Rating - Duty	40C AMB-CONT		Temp. Rise @ Rated Load	53°C	
			Locked-rotor Power Factor	53	
			Rotor inertia	0.261 LB-FT ²	

Load Characteristics 460 V, 60 Hz, 3 HP

% of Rated Load	25	50	75	100	125	150
Power Factor	39	61	72	76	76	74
Efficiency	79.3	87.8	90.1	90.3	89.2	87.6
Speed	1800	1800	1801	1800	1800	1800
Line amperes	2.25	2.63	3.27	4.11	5.2	6.5

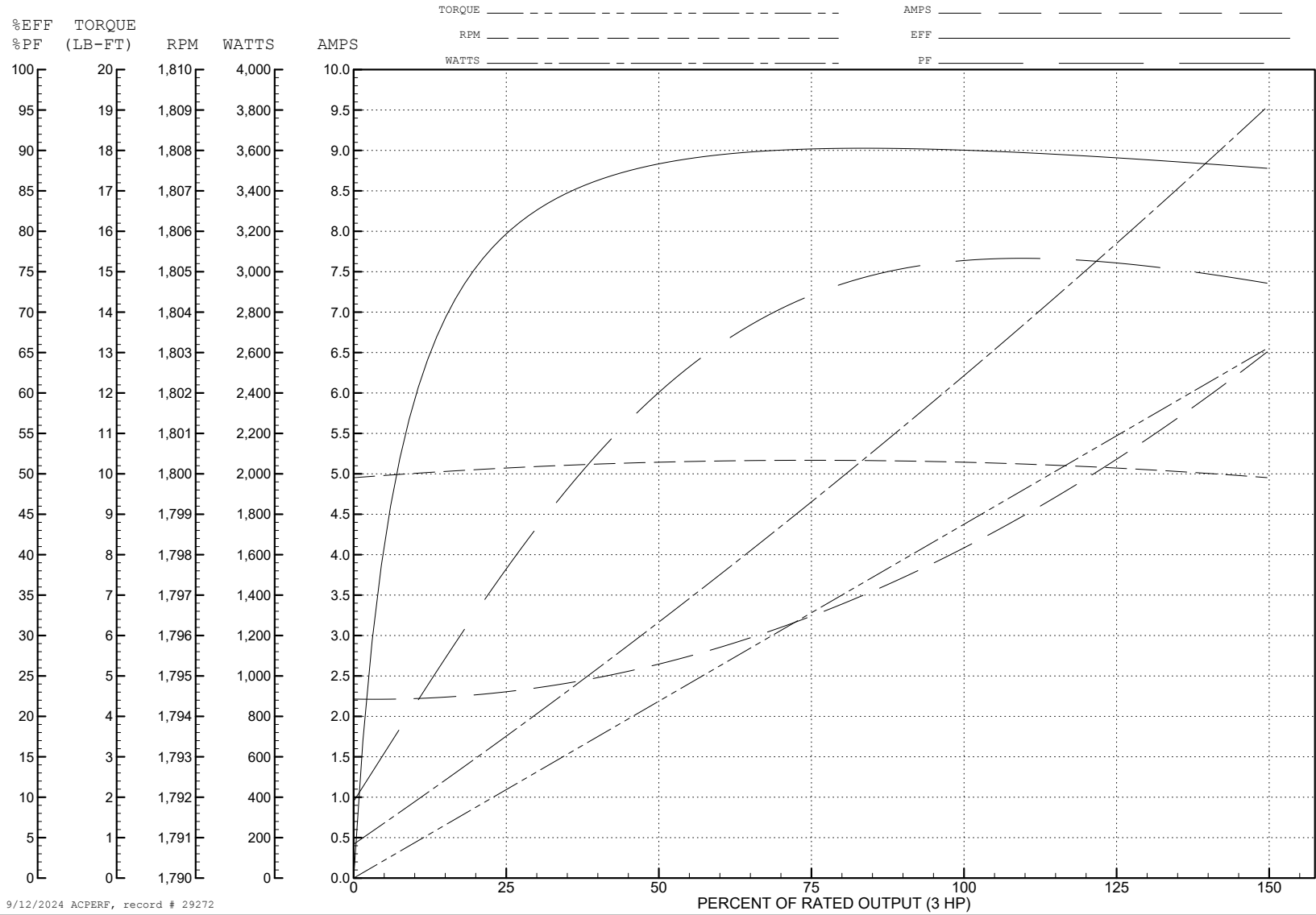
ABB Motors and Mechanical Inc.

WINDING # 35WGM362

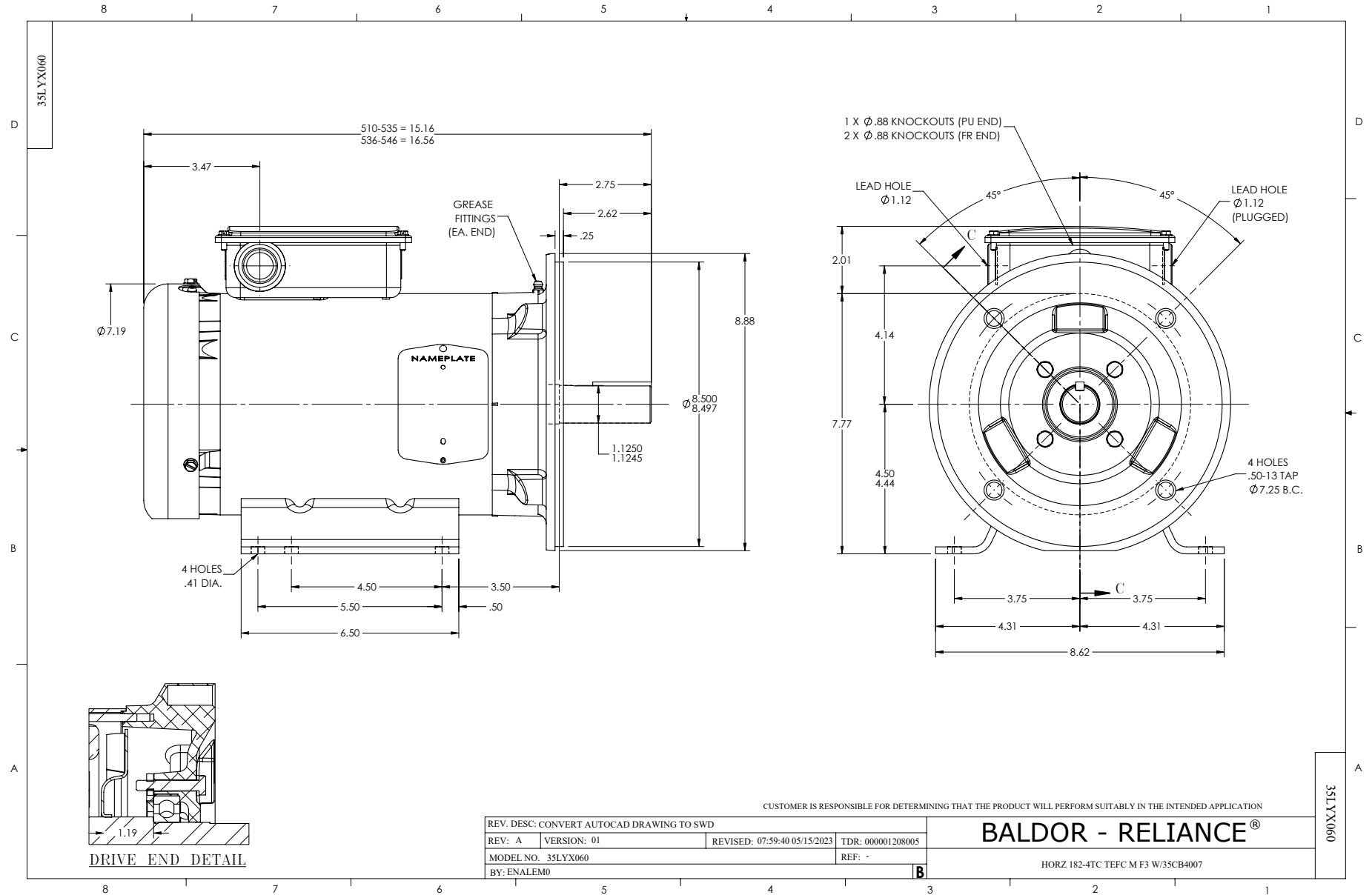
3 HP 3 PH 60 HZ 1800 RPM 460 V 3544M

Typical performance - not guaranteed values.

TORQUES (LB-FT): PO=26 PU=21 LR=25 LRA=30



9/12/2024 ACPERF, record # 29272



CD0005



LOW VOLTAGE
(2Y)



LINE

HIGH VOLTAGE
(1Y)



LINE

NOTES:

1. INTERCHANGE ANY TWO LINE LEADS TO REVERSE ROTATION.
2. OPTIONAL THERMOSTATS ARE PROVIDED WHEN SPECIFIED.
3. ACTUAL NUMBER OF INTERNAL PARALLEL CIRCUITS MAY BE A MULTIPLE OF THOSE SHOWN ABOVE.
4. LEAD COLORS ARE OPTIONAL. LEADS MUST ALWAYS BE NUMBERED AS SHOWN.

CD0005

REV. DESC: REVISE TO SHOW OPTIONAL COLORS			
REV. LTR: E	BY: JLP	REVISED: 01/19/99 10:15	TDR: 0171435
S00000		FILE: AAA00005140	MDL: -
		MTL: -	

BALDOR ELECTRIC Co.

3PH, DV, 9 LEADS