

**BALDOR® • RELIANCE™**

---

# Customer information packet

## CSPM3543

.75HP, 1175RPM, 3PH, 60HZ, 56HC, 3526M, TEFC, F

Class - None

Division - Not Applicable

## Specifications

|                                |   |
|--------------------------------|---|
| Enclosure                      | TEFC  |
| Frame                          | 56HC  |
| Frame Material                 | Steel   |
| Frequency                      | 60.00 Hz  |
| Haz Area Class and Group       | None  |
| Haz Area Division              | Not Applicable  |
| Motor Letter Type              | Three Phase   |
| Output @ Frequency             | .750 HP @ 60 HZ   |
| Phase                          | 3   |
| Synchronous Speed @ Frequency  | 1200 RPM @ 60 HZ  |
| Voltage @ Frequency            | 230.0 V @ 60 HZ<br>460.0 V @ 60 HZ                          |
| Agency Approvals               | NEMA PREMIUM<br>WEEE  |
| Ambient Temperature            | 40 °C   |
| Auxillary Box                  | No Auxillary Box  |
| Auxillary Box Lead Termination | None  |
| Base Indicator                 | Rigid   |
| Bearing Grease Type            | Polyrex EM (-20F +300F)                                     |
| Blower                         | None  |
| Current @ Voltage              | 1.400 A @ 460.0 V<br>2.800 A @ 230.0 V<br>3.500 A @ 208.0 V |
| Design Code                    | B   |
| Drip Cover                     | No Drip Cover   |
| Duty Rating                    | CONT  |
| Efficiency @ 100% Load         | 82.5 %  |
| Electrically Isolated Bearing  | Not Electrically Isolated                                   |
| Feedback Device                | NO FEEDBACK   |
| Front Shaft Indicator          | None  |
| Heater Indicator               | No Heater   |
| High Voltage Full Load Amps    | 1.4 a   |

## Part detail

|              |            |
|--------------|------------|
| Revision     | -          |
| Type         | AC         |
| Mech. spec.  | 35E6402    |
| Base         |            |
| Status       | PRD/A      |
| Elec. spec.  | 35WGG019   |
| Layout       | 35LYE6402  |
| Eff. date    | 10-17-2024 |
| CD Diagram   | CD0005     |
| Poles        | 06         |
| Leads        | 9#18       |
| Proprietary  | False      |
| Created date | 01-10-2024 |

|                                      |                     |
|--------------------------------------|---------------------|
| <b>Insulation Class</b>              | F                   |
| <b>Inverter Code</b>                 | Inverter Duty       |
| <b>KVA Code</b>                      | L                   |
| <b>Lifting Lugs</b>                  | No Lifting Lugs     |
| <b>Locked Bearing Indicator</b>      | Locked Bearing      |
| <b>Max Speed</b>                     | 1800 rpm            |
| <b>Motor Lead Quantity/Wire Size</b> | 9 @ 18 AWG          |
| <b>Motor Lead Termination</b>        | Flying Leads        |
| <b>Motor Standards</b>               | NEMA                |
| <b>Motor Type</b>                    | 3526M               |
| <b>Mounting Arrangement</b>          | F1                  |
| <b>Number of Poles</b>               | 6                   |
| <b>Overall Length</b>                | 13.22 IN            |
| <b>Power Factor</b>                  | 60                  |
| <b>Product Family</b>                | General Purpose     |
| <b>Pulley End Bearing Type</b>       | Ball                |
| <b>Pulley Face Code</b>              | C-Face              |
| <b>Pulley Shaft Indicator</b>        | Standard            |
| <b>Rodent Screen</b>                 | None                |
| <b>RoHS Status</b>                   | Y                   |
| <b>Service Factor</b>                | 1.15                |
| <b>Shaft Diameter</b>                | 0.625 IN            |
| <b>Shaft Ground Indicator</b>        | No Shaft Grounding  |
| <b>Shaft Rotation</b>                | Reversible          |
| <b>Shaft Slinger Indicator</b>       | No Slinger          |
| <b>Speed</b>                         | 1175 rpm            |
| <b>Speed Code</b>                    | Single Speed        |
| <b>Starting Method</b>               | Direct on line      |
| <b>Thermal Device - Bearing</b>      | None                |
| <b>Thermal Device - Winding</b>      | None                |
| <b>Vibration Sensor Indicator</b>    | No Vibration Sensor |
| <b>Winding Thermal 1</b>             | None                |
| <b>Winding Thermal 2</b>             | None                |



**AC Induction Motor Performance Data**

Record # 100851

Typical performance - not guaranteed values

| Winding: 35WGG019-R017 |          | Type: 3526M               | Enclosure: TEFC                                  |                       |        |
|------------------------|----------|---------------------------|--|-----------------------|--------|
| <b>Nameplate Data</b>  |          |                           | <b>460 V, 60 Hz:<br/>High Voltage Connection</b> |                       |        |
| Rated Output (HP)      | .75      | Full Load Torque          | 3.34 LB-FT                                       |                       |        |
| Volts                  | 230/460  | Start Configuration       | direct on line                                   |                       |        |
| Full Load Amps         | 2.8/1.4  | Breakdown Torque          | 11.9 LB-FT                                       |                       |        |
| R.P.M.                 | 1175     | Pull-up Torque            | 7.1 LB-FT  |                       |        |
| Hz                     | 60 Phase | 3                         | Locked-rotor Torque                              | 8.6 LB-FT             |        |
| NEMA Design Code       | B        | KVA Code                  | L  | Starting Current      | 9.1 A  |
| Service Factor (S.F.)  | 1.15     | No-load Current           | 1.02 A   |                       |        |
| NEMA Nom. Eff.         | 82.5     | Power Factor              | 60   | Line-line Res. @ 25°C | 21.1 Ω |
| Rating - Duty          | 40C      | AMB-CONT                  | Temp. Rise @ Rated Load                          |                       | 35°C   |
| S.F. Amps              | 3/1.5    | Temp. Rise @ S.F. Load    | 40°C   |                       |        |
|                        |          | Locked-rotor Power Factor | 48.3   |                       |        |
|                        |          | Rotor inertia             | 0.189 lb-ft <sup>2</sup>                         |                       |        |

**Load Characteristics 460 V, 60 Hz, 0.75 HP**

| % of Rated Load | 25   | 50   | 75   | 100  | 125  | 150  | S.F. |
|-----------------|------|------|------|------|------|------|------|
| Power Factor    | 25   | 39   | 51   | 60   | 66   | 71   | 64   |
| Efficiency      | 68.1 | 78.7 | 81.8 | 82.8 | 82.2 | 80.9 | 82.4 |
| Speed           | 1194 | 1189 | 1183 | 1176 | 1169 | 1161 | 1172 |
| Line amperes    | 1.05 | 1.14 | 1.26 | 1.42 | 1.61 | 1.84 | 1.53 |

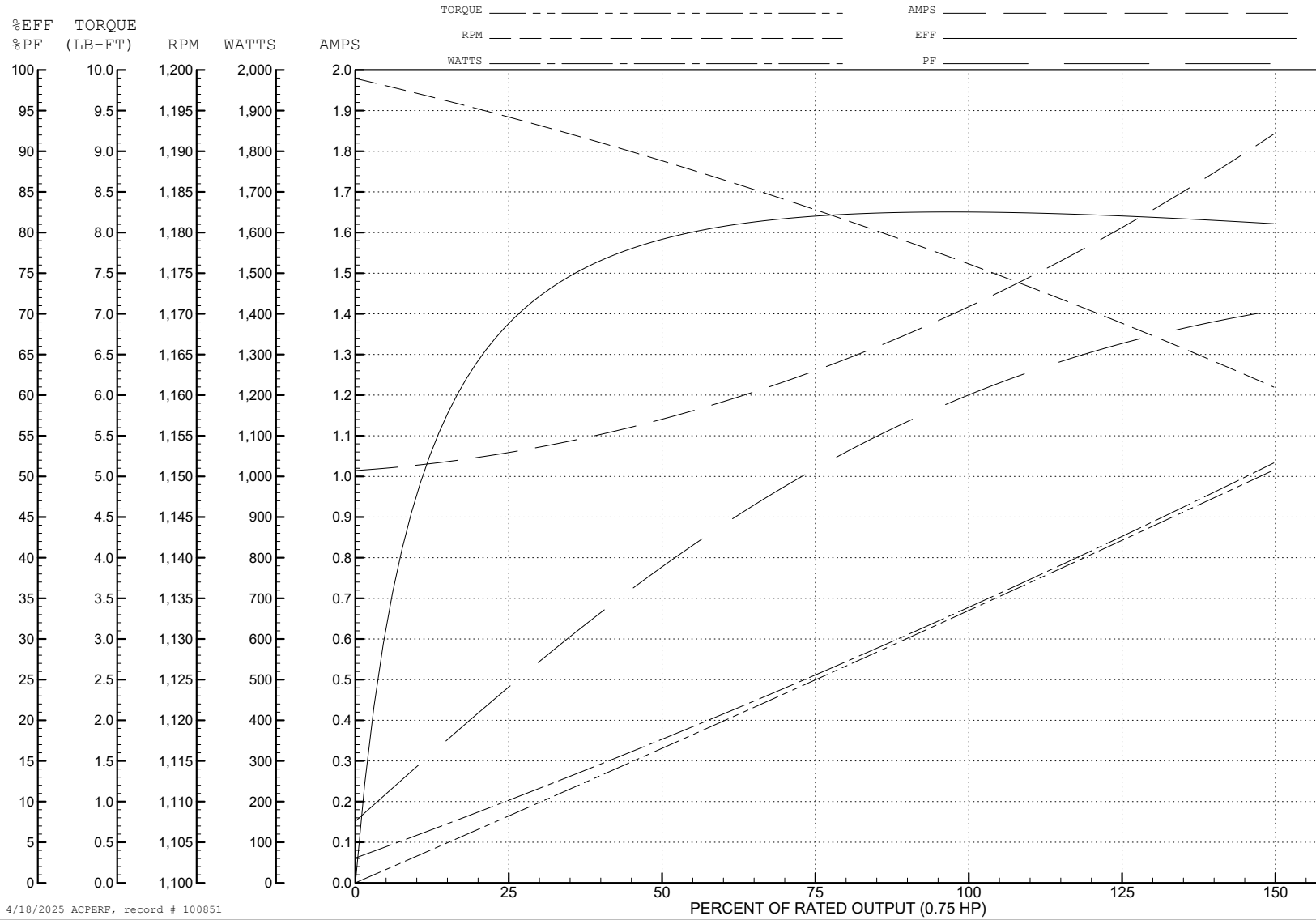
ABB Motors and Mechanical Inc.

WINDING # 35WGG019

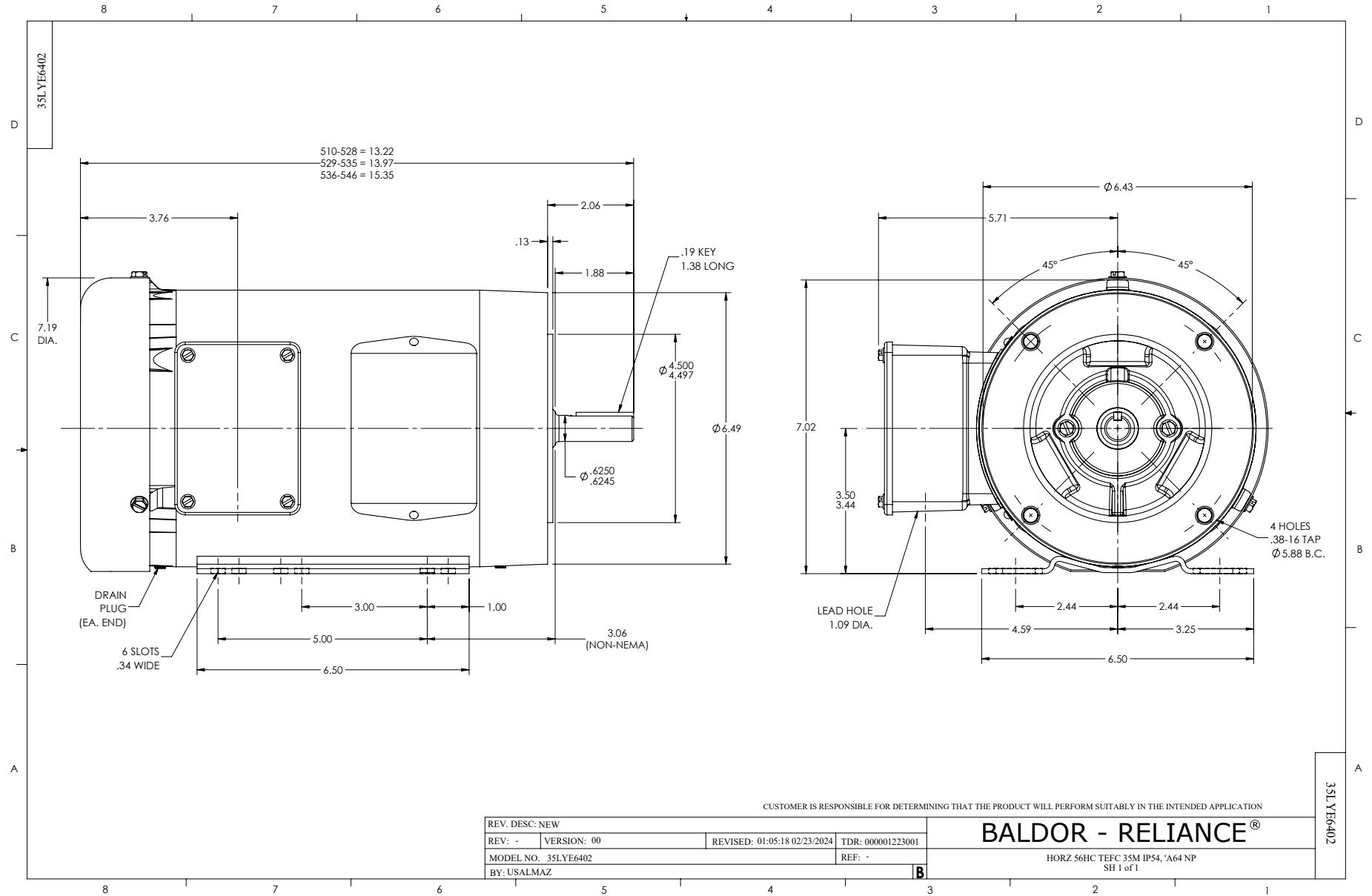
0.75 HP 3 PH 60 HZ 1175 RPM 460 V 3526M

Typical performance - not guaranteed values.

TORQUES (LB-FT): PO=11.9 PU=7.1 LR=8.6 LRA=9.1



4/18/2025 ACPERF, record # 100851



CD0005

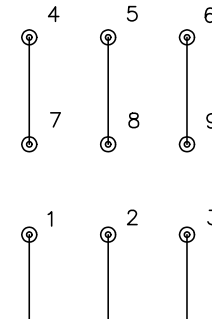


LOW VOLTAGE  
(2Y)



LINE

HIGH VOLTAGE  
(1Y)



LINE

NOTES:

1. INTERCHANGE ANY TWO LINE LEADS TO REVERSE ROTATION.
2. OPTIONAL THERMOSTATS ARE PROVIDED WHEN SPECIFIED.
3. ACTUAL NUMBER OF INTERNAL PARALLEL CIRCUITS MAY BE A MULTIPLE OF THOSE SHOWN ABOVE.
4. LEAD COLORS ARE OPTIONAL. LEADS MUST ALWAYS BE NUMBERED AS SHOWN.

|   |         |                         |              |
|---|---------|-------------------------|--------------|
| REV. DESC: REVISE TO SHOW OPTIONAL COLORS |         |                         |              |
| REV. LTR: E                               | BY: JLP | REVISED: 01/19/99 10:15 | TDR: 0171435 |
| S00000                                    |         | FILE: AAA00005140       | MDL: -       |
|   |         | MTL: -                  |              |

**BALDOR ELECTRIC Co.**

3PH, DV, 9 LEADS

CD0005