

BALDOR • RELIANCE

Customer information packet

CSPM3313T

10HP, 1770RPM, 3PH, 60HZ, 215TC, 3750M, OPSB, F

Class - None

Division - Not Applicable

Copyright © All product information within this document is subject to ABB Motors and Mechanical Inc. copyright © protection, unless otherwise noted.

4/18/2025 3:13:11 PM

Specifications

| | |
|--------------------------------|--|
| Enclosure | ODP |
| Frame | 215TC |
| Frame Material | Steel |
| Frequency | 60.00 Hz |
| Haz Area Class and Group | None |
| Haz Area Division | Not Applicable |
| Motor Letter Type | Three Phase |
| Output @ Frequency | 10.000 HP @ 60 HZ |
| Phase | 3 |
| Synchronous Speed @ Frequency | 1800 RPM @ 60 HZ |
| Voltage @ Frequency | 230.0 V @ 60 HZ 460.0 V @ 60 HZ |
| Agency Approvals | CURUSEEV NEMA_PREMIUM WEEE |
| Ambient Temperature | 40 °C |
| Auxillary Box | No Auxillary Box |
| Auxillary Box Lead Termination | None |
| Base Indicator | Rigid |
| Bearing Grease Type | Polyrex EM (-20F +300F) |
| Blower | None |
| Current @ Voltage | 12.100 A @ 460.0 V 24.200 A @ 230.0 V |
| Design Code | A |
| Drip Cover | No Drip Cover |
| Duty Rating | CONT |
| Efficiency @ 100% Load | 92.4 % |
| Electrically Isolated Bearing | Not Electrically Isolated |
| Feedback Device | NO FEEDBACK |
| Front Shaft Indicator | None |
| Heater Indicator | No Heater |
| High Voltage Full Load Amps | 12.1 a |

Part detail

| | |
|--------------|------------|
| Revision | - |
| Type | AC |
| Mech. spec. | 37T653 |
| Base | |
| Status | PRD/A |
| Elec. spec. | 37WGZ671 |
| Layout | 37LYT653 |
| Eff. date | 08-09-2024 |
| CD Diagram | CD0005 |
| Poles | 04 |
| Leads | 9#14 |
| Proprietary | False |
| Created date | 11-29-2023 |

| | |
|-------------------------------|-----------------------|
| Insulation Class | F |
| Inverter Code | Inverter Duty |
| KVA Code | J |
| Lifting Lugs | Standard Lifting Lugs |
| Locked Bearing Indicator | Locked Bearing |
| Max Speed | 2700 rpm |
| Motor Lead Quantity/Wire Size | 9 @ 14 AWG |
| Motor Lead Termination | Flying Leads |
| Motor Standards | NEMA |
| Motor Type | 3750M |
| Mounting Arrangement | F1 |
| Number of Poles | 4 |
| Overall Length | 18.94 IN |
| Power Factor | 82 |
| Product Family | General Purpose |
| Pulley End Bearing Type | Ball |
| Pulley Face Code | C-Face |
| Pulley Shaft Indicator | Standard |
| Rodent Screen | None |
| RoHS Status | ROHS COMPLIANT |
| Service Factor | 1.15 |
| Shaft Diameter | 1.375 IN |
| Shaft Ground Indicator | No Shaft Grounding |
| Shaft Rotation | Reversible |
| Shaft Slinger Indicator | No Slinger |
| Speed | 1770 rpm |
| Speed Code | Single Speed |
| Starting Method | Direct on line |
| Thermal Device - Bearing | None |
| Thermal Device - Winding | None |
| Vibration Sensor Indicator | No Vibration Sensor |
| Winding Thermal 1 | None |
| Winding Thermal 2 | None |

Nameplate

NP4423A01A01L

| | | | | | |
|--------------------|----------------------|----------------------|------------|-------------|-----------|
| CAT # | CSPM3313T | WGT | 158 | LBS | |
| SPEC | 37T653Z671 | ENCL | OPSB | | |
| SER # | | CC | 010A | IP | 23 |
| HP | 10 | MAG CUR | 10.2/5.1 | | |
| VOLTS | 230/460 | NEMA NOM. EFF | | | 92.4 |
| AMPS | 24.2/12.1 | PF | 82 | | |
| RATING | 40C AMB-CONT | | | | |
| RPM | 1770 | MAX RPM | 2700 | | |
| FRAME | 215TC | HZ | 60 | CODE | J |
| | | CLASS | | DES | F |
| SER.F. | 1.15 | SF AMP | 27.6/13.8 | PH | 3 |
| | | DES | | DES | A |
| DE | 6307 | ODE | 6206 | | |
| LUBRICATION | POLYREX EM | | | | |
| ID LOGO | INVERTER TYPE | VPWM | CHP | 60 | TO |
| | | | | | 90 |
| ID LOGO | WK2 | 1.18 | CT | 6 | TO |
| | | | | | 60 |
| ID LOGO | SL HZ | 1 | VT | 3 | TO |
| | | | | | 60 |
| | | | | | 20:1 |
| | | | | | |
| | | | | | |
| | | | | | |
| | | | | | |
| | | | | | |
| | | | | | |
| YR | | | | QR | |

AC Induction Motor Performance Data

Record # 96652

Typical performance - not guaranteed values

| Winding: 37WGZ671-R001 | | Type: 3750M | | Enclosure: OPSB | |
|-------------------------------|--------------------------|----------------------------|--|------------------------|--|
| Nameplate Data | | | 460 V, 60 Hz: High Voltage Connection | | |
| Rated Output (HP) | 10 | Full Load Torque | 29.83 LB-FT | | |
| Volts | 230/460 | Start Configuration | direct on line | | |
| Full Load Amps | 24.2/12.1 | Breakdown Torque | 105 LB-FT | | |
| R.P.M. | 1770 | Pull-up Torque | 47.5 LB-FT | | |
| Hz | 60 Phase | 3 | Locked-rotor Torque | 66.1 LB-FT | |
| NEMA Design Code | A KVA Code | J | Starting Current | 107 A | |
| Service Factor (S.F.) | 1.15 | | No-load Current | 6.05 A | |
| NEMA Nom. Eff. | 92.4 Power Factor | 82 | Line-line Res. @ 25°C | 0.89616 Ω | |
| Rating - Duty | 40C AMB-CONT | | Temp. Rise @ Rated Load | 36°C | |
| S.F. Amps | 27.6/13.8 | | Temp. Rise @ S.F. Load | 44°C | |
| | | | Locked-rotor Power Factor | 35.2 | |

Load Characteristics 460 V, 60 Hz, 10 HP

| % of Rated Load | 25 | 50 | 75 | 100 | 125 | 150 | S.F. |
|------------------------|-----------|-----------|-----------|------------|------------|------------|-------------|
| Power Factor | 40 | 62 | 74 | 79 | 82 | 84 | 81 |
| Efficiency | 87.9 | 92.1 | 92.9 | 92.7 | 92 | 91.2 | 92.3 |
| Speed | 1793.1 | 1787.3 | 1781.1 | 1774.3 | 1767.2 | 1759.6 | 1770 |
| Line amperes | 6.71 | 8.27 | 10.4 | 12.8 | 15.5 | 18.4 | 14.4 |

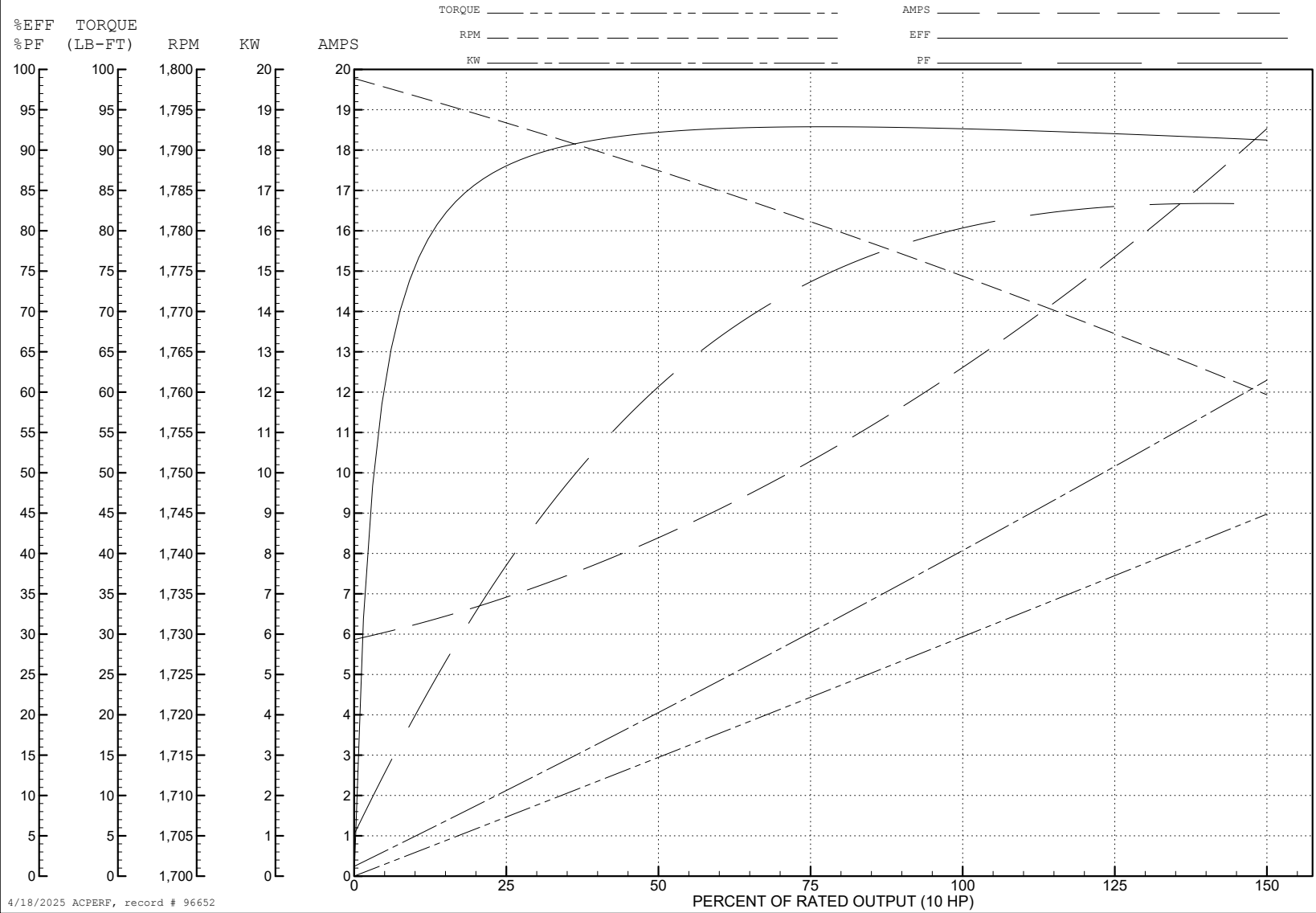
ABB Motors and Mechanical Inc.

WINDING # 37WGZ671

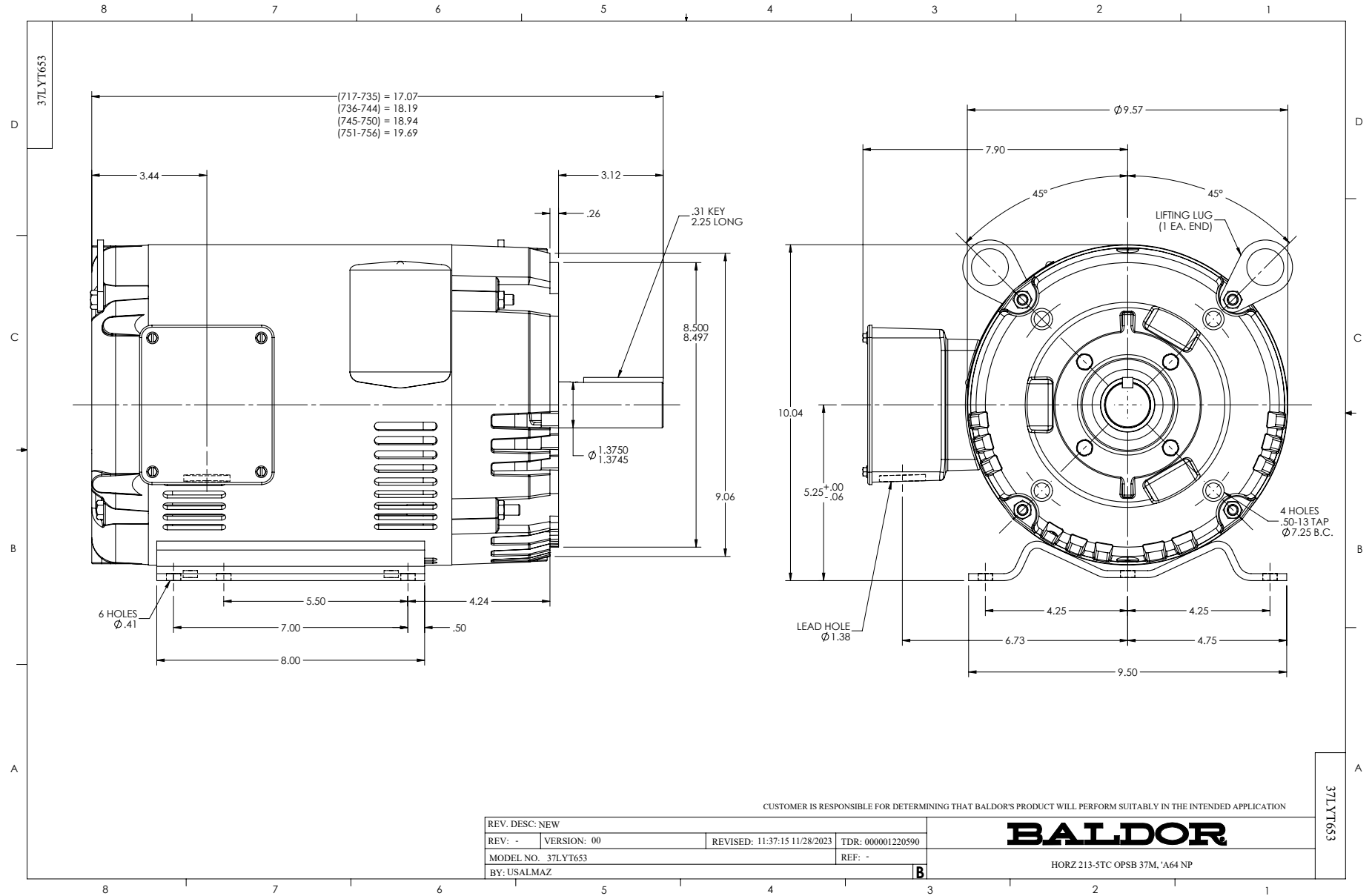
Typical performance - not guaranteed values.

10 HP 3 PH 60 HZ 1770 RPM 460 V 3750M

TORQUES (LB-FT): PO=105 PU=47.5 LR=66.1 LRA=107



4/18/2025 ACPERF, record # 96652



CD0005



LOW VOLTAGE
(2Y)



LINE

HIGH VOLTAGE
(1Y)



LINE

NOTES:

1. INTERCHANGE ANY TWO LINE LEADS TO REVERSE ROTATION.
2. OPTIONAL THERMOSTATS ARE PROVIDED WHEN SPECIFIED.
3. ACTUAL NUMBER OF INTERNAL PARALLEL CIRCUITS MAY BE A MULTIPLE OF THOSE SHOWN ABOVE.
4. LEAD COLORS ARE OPTIONAL. LEADS MUST ALWAYS BE NUMBERED AS SHOWN.

CD0005

| | | | |
|---|---------|-------------------------|--------------|
| REV. DESC: REVISE TO SHOW OPTIONAL COLORS | | | |
| REV. LTR: E | BY: JLP | REVISED: 01/19/99 10:15 | TDR: 0171435 |
| S00000 | | FILE: AAA00005140 | MDL: - |
| | | MTL: - | |

BALDOR ELECTRIC Co.

3PH, DV, 9 LEADS