



Customer information packet

CSPM3311T

7.5HP, 1775RPM, 3PH, 60HZ, 213TC, 3750M, OPSB

Class - None

Division - Not Applicable

Specifications

| | |
|--------------------------------|--|
| Enclosure | ODP |
| Frame | 213TC |
| Frame Material | Steel |
| Frequency | 60.00 Hz |
| Haz Area Class and Group | None |
| Haz Area Division | Not Applicable |
| Motor Letter Type | Three Phase |
| Output @ Frequency | 7.500 HP @ 60 HZ |
| Phase | 3 |
| Synchronous Speed @ Frequency | 1800 RPM @ 60 HZ |
| Voltage @ Frequency | 230.0 V @ 60 HZ 460.0 V @ 60 HZ |
| Agency Approvals | CURUSEEV NEMA_PREMIUM WEEE |
| Ambient Temperature | 40 °C |
| Auxillary Box | No Auxillary Box |
| Auxillary Box Lead Termination | None |
| Base Indicator | Rigid |
| Bearing Grease Type | Polyrex EM (-20F +300F) |
| Blower | None |
| Current @ Voltage | 10.000 A @ 460.0 V 20.000 A @ 230.0 V |
| Design Code | A |
| Drip Cover | No Drip Cover |
| Duty Rating | CONT |
| Efficiency @ 100% Load | 92.4 % |
| Electrically Isolated Bearing | Not Electrically Isolated |
| Feedback Device | NO FEEDBACK |
| Front Shaft Indicator | None |
| Heater Indicator | No Heater |
| High Voltage Full Load Amps | 10.0 a |

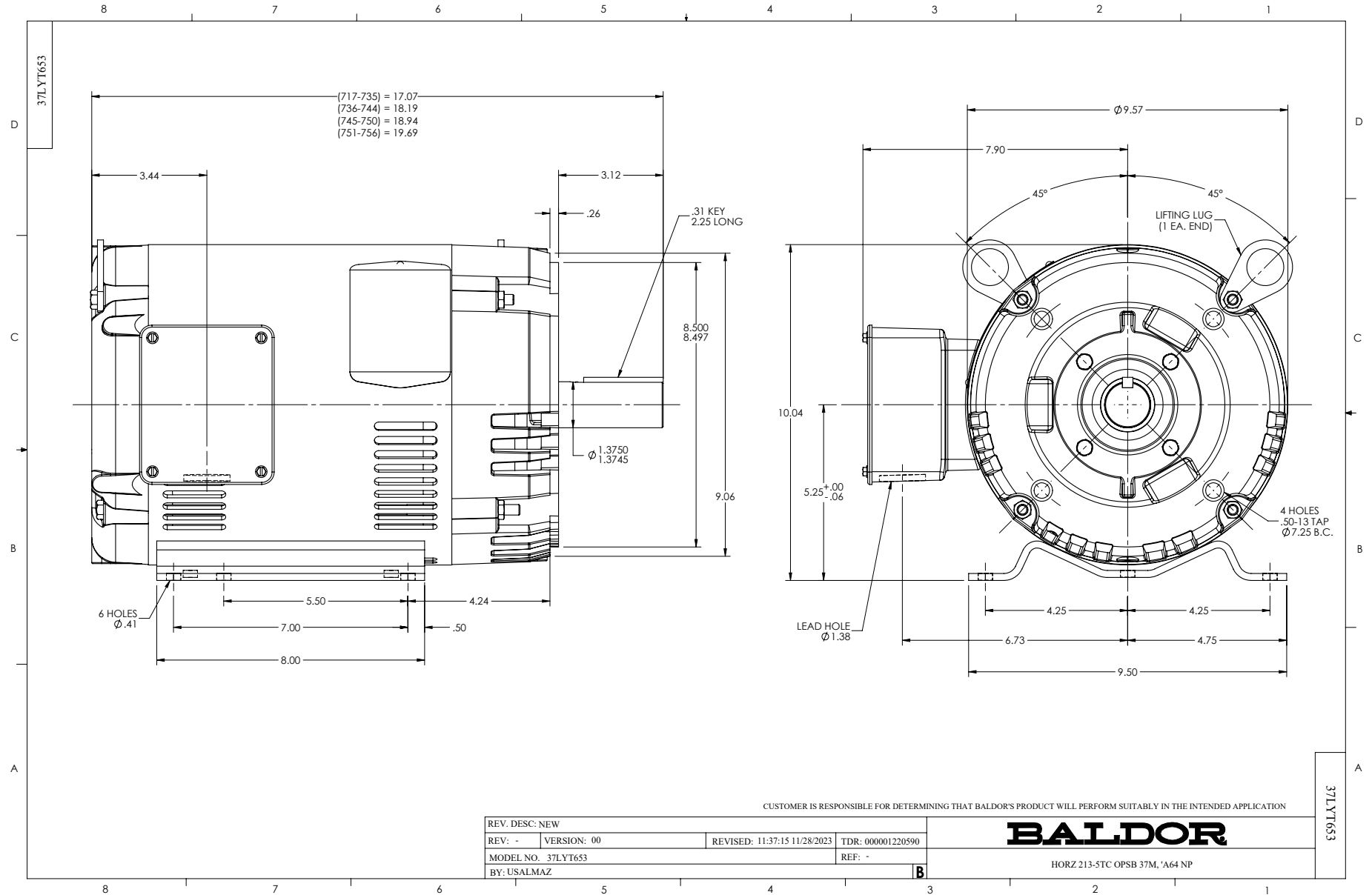
Part detail

| | |
|--------------|------------|
| Revision | - |
| Type | AC |
| Mech. spec. | 37T653 |
| Base | |
| Status | PRD/A |
| Elec. spec. | 37WGZ670 |
| Layout | 37LYT653 |
| Eff. date | 08-09-2024 |
| CD Diagram | CD0005 |
| Poles | 04 |
| Leads | 9#14 Y |
| Proprietary | False |
| Created date | 11-28-2023 |

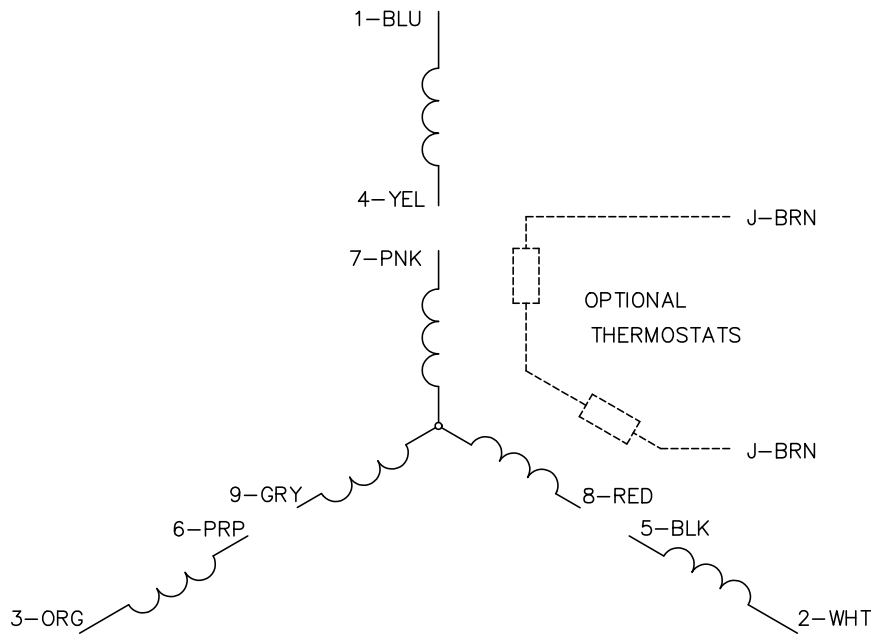
| | |
|-------------------------------|-----------------------|
| Insulation Class | F |
| Inverter Code | Inverter Duty |
| KVA Code | L |
| Lifting Lugs | Standard Lifting Lugs |
| Locked Bearing Indicator | Locked Bearing |
| Max Speed | 2700 rpm |
| Motor Lead Quantity/Wire Size | 9 @ 14 AWG |
| Motor Lead Termination | Flying Leads |
| Motor Standards | NEMA |
| Motor Type | 3750M |
| Mounting Arrangement | F1 |
| Number of Poles | 4 |
| Overall Length | 18.94 IN |
| Power Factor | 78 |
| Product Family | General Purpose |
| Pulley End Bearing Type | Ball |
| Pulley Face Code | C-Face |
| Pulley Shaft Indicator | Standard |
| Rodent Screen | None |
| RoHS Status | ROHS COMPLIANT |
| Service Factor | 1.15 |
| Shaft Diameter | 1.375 IN |
| Shaft Ground Indicator | No Shaft Grounding |
| Shaft Rotation | Reversible |
| Shaft Slinger Indicator | No Slinger |
| Speed | 1775 rpm |
| Speed Code | Single Speed |
| Starting Method | Direct on line |
| Thermal Device - Bearing | None |
| Thermal Device - Winding | None |
| Vibration Sensor Indicator | No Vibration Sensor |
| Winding Thermal 1 | None |
| Winding Thermal 2 | None |

Nameplate

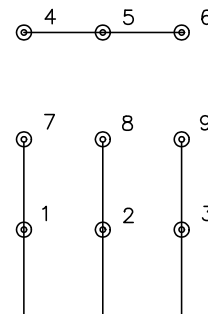
| NP4423A01A01L | | | | | | | | | |
|--------------------|----------------------|---------------|----------------|----------------------|-----------|--------------|------------|---|--|
| CAT # | CSPM3311T | | | WGT | 158 | LBS | | | |
| SPEC | 37T653Z670 | | | ENCL | OPSB | | | | |
| SER # | | | | CC | 010A | IP | 23 | | |
| HP | 7.5 | | MAG CUR | 9.8/4.9 | | | | | |
| VOLTS | 230/460 | | | NEMA NOM. EFF | 92.4 | | | | |
| AMPS | 20/10 | | | PF | 78 | | | | |
| RATING | 40C AMB-CONT | | | | | | | | |
| RPM | 1775 | | | MAX RPM | 2700 | | | | |
| FRAME | 213TC | HZ | 60 | CODE | L | CLASS | F | | |
| SER.F. | 1.15 | SF AMP | 22/11 | | PH | 3 | DES | A | |
| DE | 6307 | | ODE | 6206 | | | | | |
| LUBRICATION | POLYREX EM | | | | | | | | |
| ID LOGO | INVERTER TYPE | VPWM | CHP | 60 | TO | 90 | 1.5:1 | | |
| ID LOGO | WK2 | 1.18 | CT | 6 | TO | 60 | 10:1 | | |
| ID LOGO | SL HZ | 0.8 | VT | 3 | TO | 60 | 20:1 | | |
| | | | | QR | | | | | |
| YR | | | | | | | | | |



CD0005

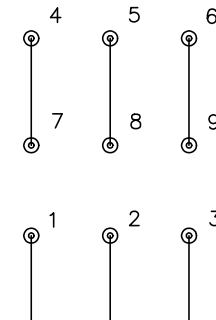


LOW VOLTAGE
(2Y)



LINE

HIGH VOLTAGE
(1Y)



LINE

NOTES:

1. INTERCHANGE ANY TWO LINE LEADS TO REVERSE ROTATION.
2. OPTIONAL THERMOSTATS ARE PROVIDED WHEN SPECIFIED.
3. ACTUAL NUMBER OF INTERNAL PARALLEL CIRCUITS MAY BE A MULTIPLE OF THOSE SHOWN ABOVE.
4. LEAD COLORS ARE OPTIONAL. LEADS MUST ALWAYS BE NUMBERED AS SHOWN.

CD0005

| | | | |
|---|---------|-------------------------|--------------|
| REV. DESC: REVISE TO SHOW OPTIONAL COLORS | | | |
| REV. LTR: E | BY: JLP | REVISED: 01/19/99 10:15 | TDR: 0171435 |
| S00000 | | FILE: AAA00005140 | MDL: - |
| | | MTL: - | |

BALDOR ELECTRIC Co.

3PH, DV, 9 LEADS