

**BALDOR • RELIANCE**

---

# Customer information packet

## CSPM3219T

7.5HP, 3500RPM, 3PH, 60HZ, 184TC, 3646M, OPSB

Class - None

Division - Not Applicable

## Specifications

Enclosure	ODP
Frame	184TC
Frame Material	Steel
Frequency	60.00 Hz
Haz Area Class and Group	None
Haz Area Division	Not Applicable
Motor Letter Type	Three Phase
Output @ Frequency	7.500 HP @ 60 HZ
Phase	3
Synchronous Speed @ Frequency	3600 RPM @ 60 HZ
Voltage @ Frequency	230.0 V @ 60 HZ 460.0 V @ 60 HZ
Agency Approvals	CURUSEEV NEMA_PREMIUM WEEE
Ambient Temperature	40 °C
Auxillary Box	No Auxillary Box
Auxillary Box Lead Termination	None
Base Indicator	Rigid
Bearing Grease Type	Polyrex EM (-20F +300F)
Blower	None
Current @ Voltage	16.800 A @ 230.0 V 8.400 A @ 460.0 V
Design Code	B
Drip Cover	No Drip Cover
Duty Rating	CONT
Efficiency @ 100% Load	90.2 %
Electrically Isolated Bearing	Not Electrically Isolated
Feedback Device	NO FEEDBACK
Front Shaft Indicator	None
Heater Indicator	No Heater
High Voltage Full Load Amps	8.4 a

## Part detail

Revision	-
Type	AC
Mech. spec.	36P419
Base	
Status	PRD/A
Elec. spec.	36WGX419
Layout	36LYP419
Eff. date	09-11-2024
CD Diagram	CD0005
Poles	02
Leads	9#16
Proprietary	False
Created date	01-02-2024

Insulation Class	F
Inverter Code	Inverter Duty
KVA Code	K
Lifting Lugs	Standard Lifting Lugs
Locked Bearing Indicator	Locked Bearing
Max Speed	5400 rpm
Motor Lead Quantity/Wire Size	9 @ 16 AWG
Motor Lead Termination	Flying Leads
Motor Standards	NEMA
Motor Type	3646M
Mounting Arrangement	F1
Number of Poles	2
Overall Length	16.50 IN
Power Factor	91
Product Family	General Purpose
Pulley End Bearing Type	Ball
Pulley Face Code	C-Face
Pulley Shaft Indicator	Standard
Rodent Screen	None
RoHS Status	ROHS COMPLIANT
Service Factor	1.15
Shaft Diameter	1.125 IN
Shaft Ground Indicator	No Shaft Grounding
Shaft Rotation	Reversible
Shaft Slinger Indicator	No Slinger
Speed	3500 rpm
Speed Code	Single Speed
Starting Method	Direct on line
Thermal Device - Bearing	None
Thermal Device - Winding	None
Vibration Sensor Indicator	No Vibration Sensor
Winding Thermal 1	None
Winding Thermal 2	None



**AC Induction Motor Performance Data**

Record # 100920

Typical performance - not guaranteed values

Winding: 36WGX419-R006		Type: 3646M	Enclosure: OPEN	
<b>Nameplate Data</b>		<b>460 V, 60 Hz: High Voltage Connection</b>		
Rated Output (HP)	7.5	Full Load Torque	11.2 LB-FT	
Volts	230/460	Start Configuration	direct on line	
Full Load Amps	16.8/8.4	Breakdown Torque	55 LB-FT	
R.P.M.	3500	Pull-up Torque	40 LB-FT	
Hz	60 Phase	3	Locked-rotor Torque	48 LB-FT
NEMA Design Code	B KVA Code	K	Starting Current	87 A
Service Factor (S.F.)		1.15	No-load Current	2.2 A
NEMA Nom. Eff.	90.2 Power Factor	91	Line-line Res. @ 25°C	1.45 Ω
Rating - Duty		40C AMB-CONT	Temp. Rise @ Rated Load	52°C
S.F. Amps		19/9.5	Temp. Rise @ S.F. Load	65°C
			Locked-rotor Power Factor	44.6
			Rotor inertia	0.205 lb-ft <sup>2</sup>

**Load Characteristics 460 V, 60 Hz, 7.5 HP**

% of Rated Load	25	50	75	100	125	150	S.F.
Power Factor	65	84	90	91	93	93	92
Efficiency	87.9	91.3	91.6	90.9	89.9	88.6	90.3
Speed	3570	3542	3511	3478	3446	3412	3459
Line amperes	3.1	4.6	6.4	8.4	10.3	12.4	9.54

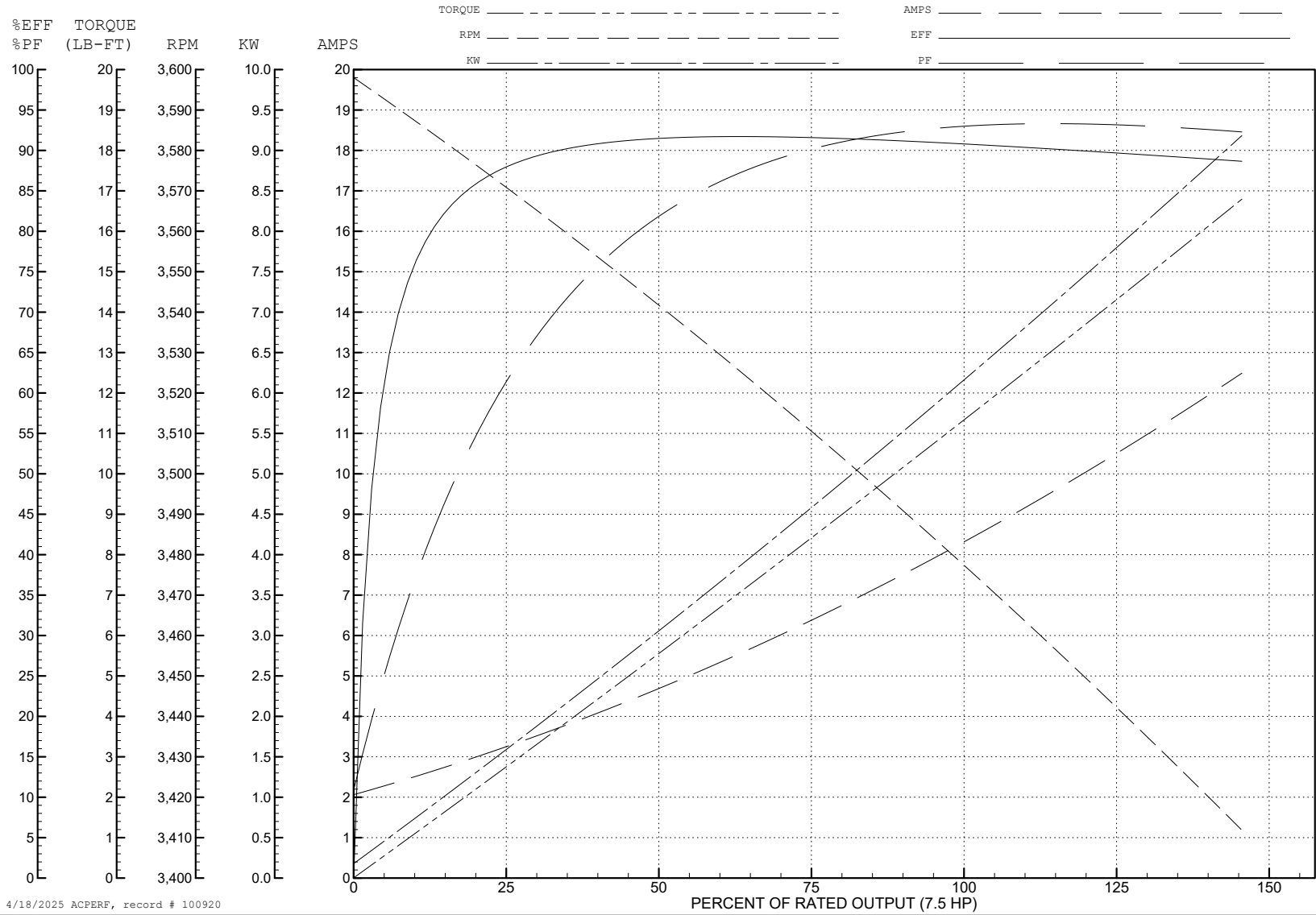
ABB Motors and Mechanical Inc.

WINDING # 36WGX419

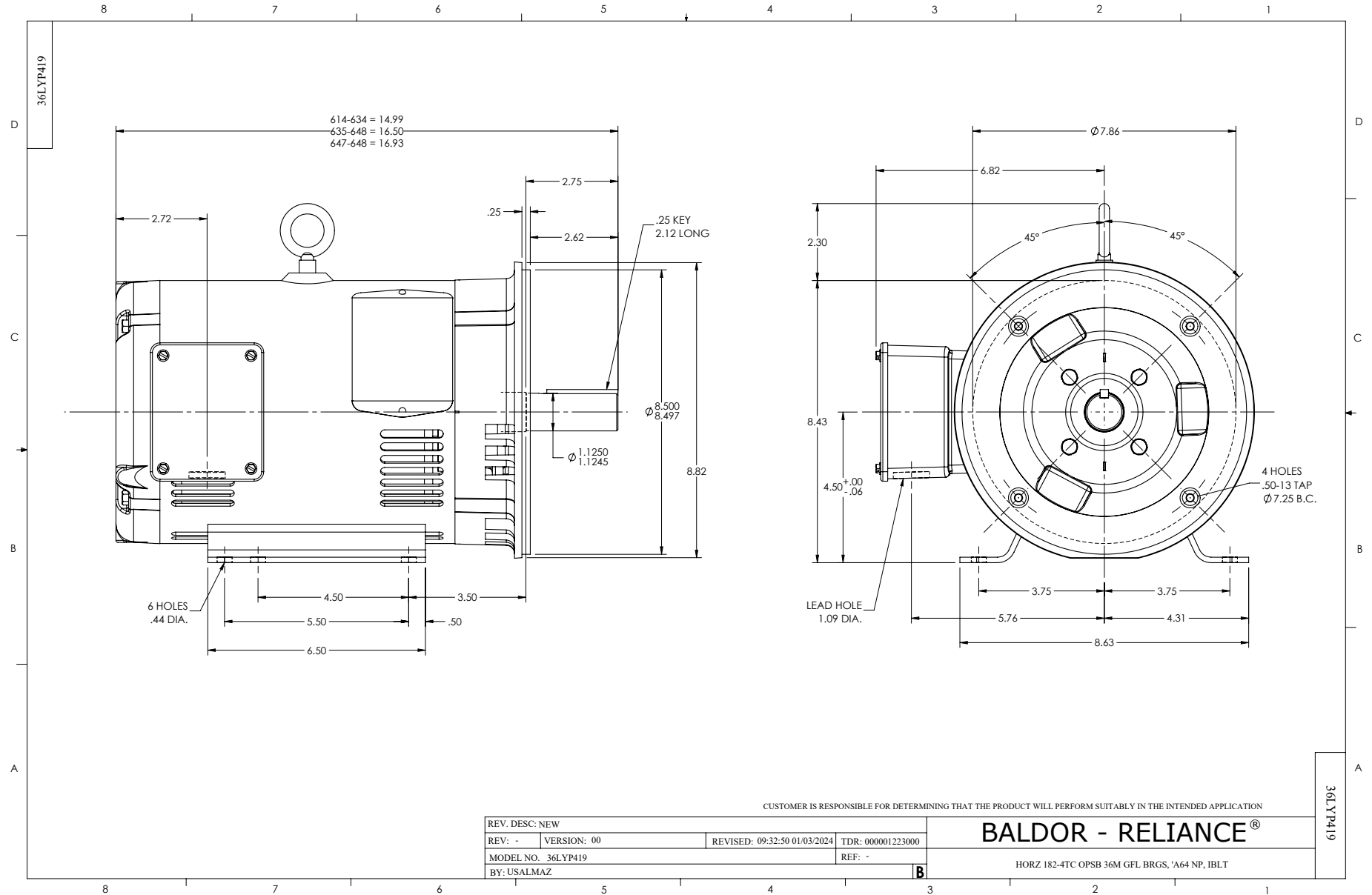
Typical performance - not guaranteed values.

7.5 HP 3 PH 60 HZ 3500 RPM 460 V 3646M

TORQUES (LB-FT): PO=55 PU=40 LR=48 LRA=87



4/18/2025 ACPERF, record # 100920



CD0005



LOW VOLTAGE  
(2Y)



LINE

HIGH VOLTAGE  
(1Y)



LINE

NOTES:

1. INTERCHANGE ANY TWO LINE LEADS TO REVERSE ROTATION.
2. OPTIONAL THERMOSTATS ARE PROVIDED WHEN SPECIFIED.
3. ACTUAL NUMBER OF INTERNAL PARALLEL CIRCUITS MAY BE A MULTIPLE OF THOSE SHOWN ABOVE.
4. LEAD COLORS ARE OPTIONAL. LEADS MUST ALWAYS BE NUMBERED AS SHOWN.

CD0005

REV. DESC: REVISE TO SHOW OPTIONAL COLORS			
REV. LTR: E	BY: JLP	REVISED: 01/19/99 10:15	TDR: 0171435
S00000		FILE: AAA00005140	MDL: -
		MTL: -	

**BALDOR ELECTRIC Co.**

3PH, DV, 9 LEADS