



Customer information packet

CSPM3215T

2HP, 1175RPM, 3PH, 60HZ, 184TC, 3648M, OPSB, F1

Class - None

Division - Not Applicable

Specifications

Enclosure	ODP
Frame	184TC
Frame Material	Steel
Frequency	60.00 Hz
Haz Area Class and Group	None
Haz Area Division	Not Applicable
Motor Letter Type	Three Phase
Output @ Frequency	2.000 HP @ 60 HZ
Phase	3
Synchronous Speed @ Frequency	1200 RPM @ 60 HZ
Voltage @ Frequency	460.0 V @ 60 HZ 230.0 V @ 60 HZ
Agency Approvals	CURUSEEV NEMA_PREMIUM WEEE
Ambient Temperature	40 °C
Auxillary Box	No Auxillary Box
Auxillary Box Lead Termination	None
Base Indicator	Rigid
Bearing Grease Type	Polyrex EM (-20F +300F)
Blower	None
Current @ Voltage	6.600 A @ 230.0 V 7.000 A @ 208.0 V 3.300 A @ 460.0 V
Design Code	B
Drip Cover	No Drip Cover
Duty Rating	CONT
Efficiency @ 100% Load	89.5 %
Electrically Isolated Bearing	Not Electrically Isolated
Feedback Device	NO FEEDBACK
Front Shaft Indicator	None
Heater Indicator	No Heater

Part detail

Revision	-
Type	AC
Mech. spec.	36P419
Base	
Status	PRD/A
Elec. spec.	36WGM001
Layout	36LYP419
Eff. date	09-11-2024
CD Diagram	CD0005
Poles	06
Leads	9#16
Proprietary	False
Created date	01-02-2024

High Voltage Full Load Amps	3.3 a
Insulation Class	F
Inverter Code	Inverter Duty
KVA Code	M
Lifting Lugs	Standard Lifting Lugs
Locked Bearing Indicator	Locked Bearing
Max Speed	1800 rpm
Motor Lead Quantity/Wire Size	9 @ 16 AWG
Motor Lead Termination	Flying Leads
Motor Standards	NEMA
Motor Type	3648M
Mounting Arrangement	F1
Number of Poles	6
Overall Length	16.93 IN
Power Factor	64
Product Family	General Purpose
Pulley End Bearing Type	Ball
Pulley Face Code	C-Face
Pulley Shaft Indicator	Standard
Rodent Screen	None
RoHS Status	ROHS COMPLIANT
Service Factor	1.15
Shaft Diameter	1.125 IN
Shaft Ground Indicator	No Shaft Grounding
Shaft Rotation	Reversible
Shaft Slinger Indicator	No Slinger
Speed	1175 rpm
Speed Code	Single Speed
Starting Method	Direct on line
Thermal Device - Bearing	None
Thermal Device - Winding	None
Vibration Sensor Indicator	No Vibration Sensor
Winding Thermal 1	None
Winding Thermal 2	None

AC Induction Motor Performance Data

Record # 100904

Preliminary Data Sheet

Winding: 36WGM001-R001		Type: 3648M		Enclosure: TEFC	
Nameplate Data			460 V, 60 Hz: High Voltage Connection		
Rated Output (HP)	2		Full Load Torque	8.92 LB-FT	
Volts	230/460		Start Configuration	direct on line	
Full Load Amps	6.6/3.3		Breakdown Torque	36.7 LB-FT	
R.P.M.	1175		Pull-up Torque	19.4 LB-FT	
Hz	60 Phase	3	Locked-rotor Torque	25.3 LB-FT	
NEMA Design Code	B KVA Code	M	Starting Current	24.9 A	
Service Factor (S.F.)	1.15		No-load Current	2.14 A	
NEMA Nom. Eff.	89.5 Power Factor	64	Line-line Res. @ 25°C	4.23 Ω	
Rating - Duty	40C AMB-CONT		Temp. Rise @ Rated Load	32°C	
S.F. Amps	7.2/3.6		Temp. Rise @ S.F. Load	37°C	
			Locked-rotor Power Factor	27.9	
			Rotor inertia	0.451 lb-ft ²	

Load Characteristics 460 V, 60 Hz, 2 HP

% of Rated Load	25	50	75	100	125	150	S.F.
Power Factor	26	44	55	64	69	73	67
Efficiency	79.2	87	89	89.5	89.3	88.3	89.4
Speed	1196	1191	1184	1178	1170	1162	1173
Line amperes	2.23	2.49	2.84	3.28	3.79	4.38	3.59

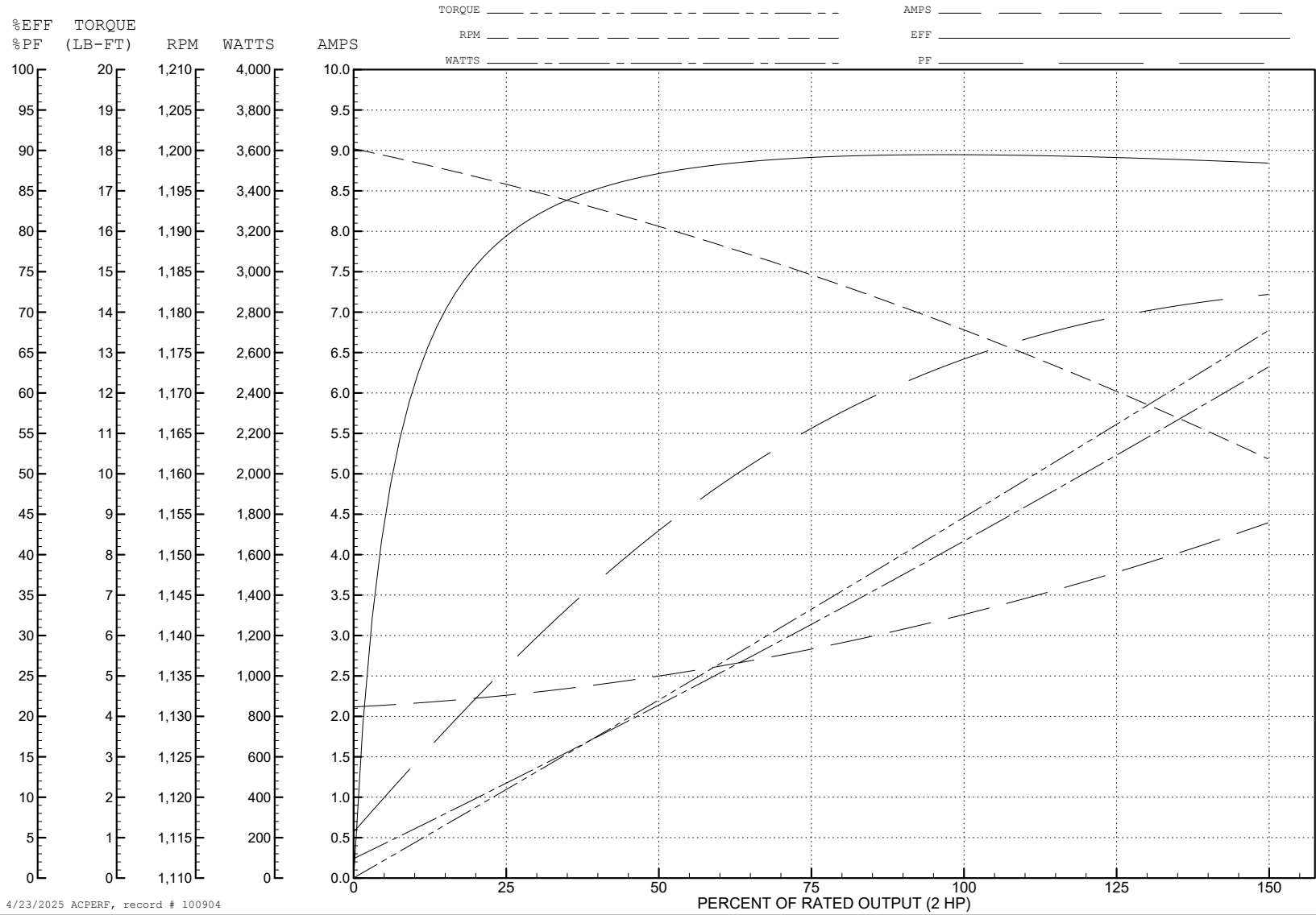
ABB Motors and Mechanical Inc.

WINDING # 36WGM001

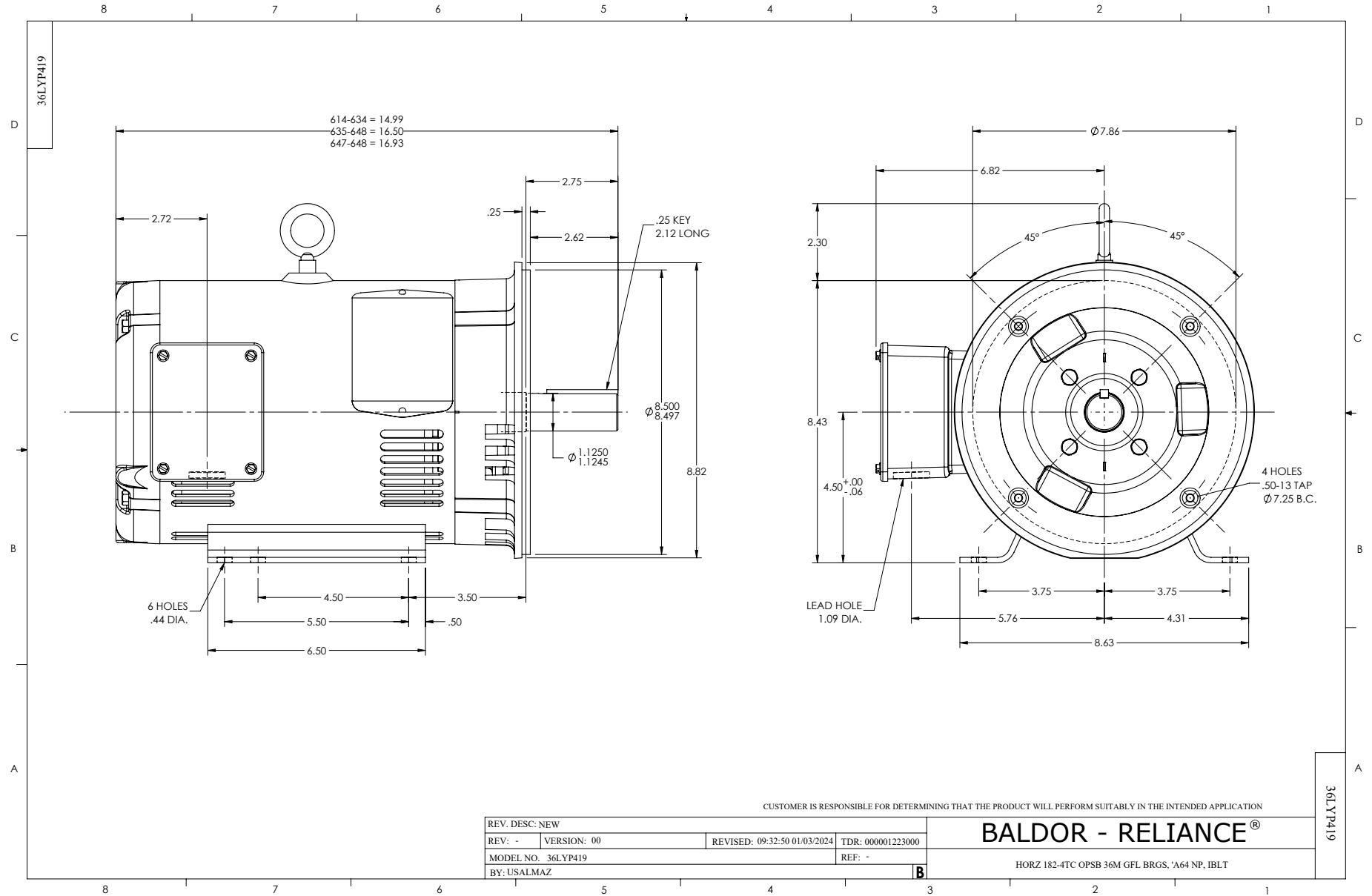
Typical performance - not guaranteed values.

2 HP 3 PH 60 HZ 1175 RPM 460 V 3648M

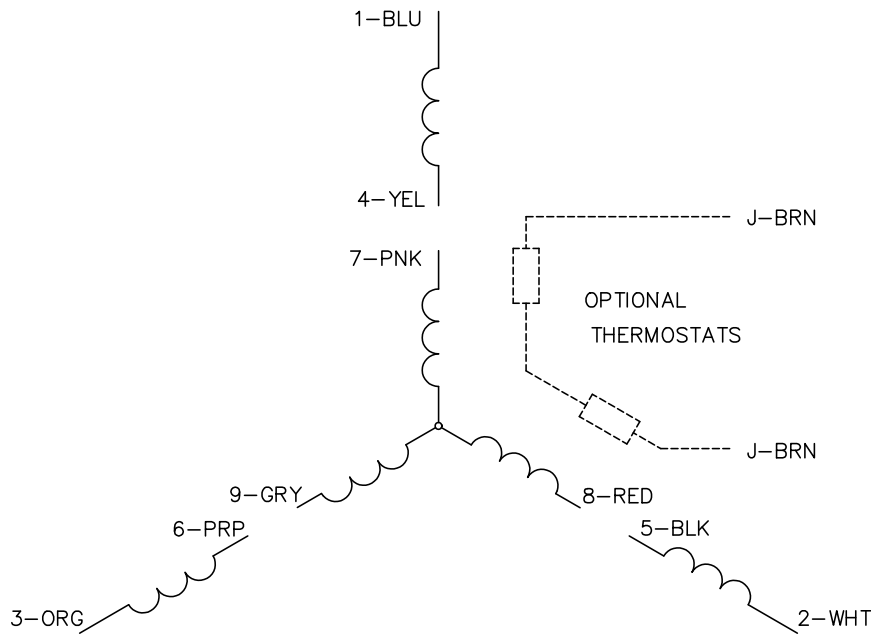
TORQUES (LB-FT): PO=36.7 PU=19.4 LR=25.3 LRA=24.9



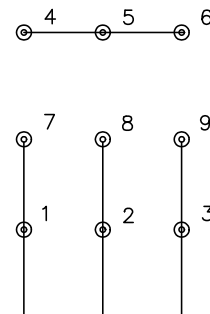
4/23/2025 ACPERF, record # 100904



CD0005

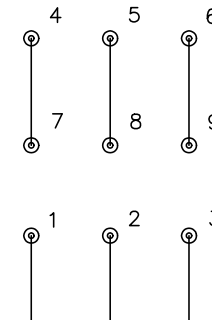


LOW VOLTAGE
(2Y)



LINE

HIGH VOLTAGE
(1Y)



LINE

NOTES:

1. INTERCHANGE ANY TWO LINE LEADS TO REVERSE ROTATION.
2. OPTIONAL THERMOSTATS ARE PROVIDED WHEN SPECIFIED.
3. ACTUAL NUMBER OF INTERNAL PARALLEL CIRCUITS MAY BE A MULTIPLE OF THOSE SHOWN ABOVE.
4. LEAD COLORS ARE OPTIONAL. LEADS MUST ALWAYS BE NUMBERED AS SHOWN.

CD0005

REV. DESC: REVISE TO SHOW OPTIONAL COLORS			
REV. LTR: E	BY: JLP	REVISED: 01/19/99 10:15	TDR: 0171435
S00000		FILE: AAA00005140	MDL: -
		MTL: -	

BALDOR ELECTRIC Co.

3PH, DV, 9 LEADS