

BALDOR • RELIANCE

Customer information packet

CSPM3211T

3HP, 1765RPM, 3PH, 60HZ, 182TC, 3640M, OPSB, F1

Class - None

Division - Not Applicable

Specifications

Enclosure	ODP
Frame	182TC
Frame Material	Steel
Frequency	60.00 Hz
Haz Area Class and Group	None
Haz Area Division	Not Applicable
Motor Letter Type	Three Phase
Output @ Frequency	3.000 HP @ 60 HZ
Phase	3
Synchronous Speed @ Frequency	1800 RPM @ 60 HZ
Voltage @ Frequency	230.0 V @ 60 HZ 460.0 V @ 60 HZ
Agency Approvals	CURUSEEV NEMA_PREMIUM WEEE
Ambient Temperature	40 °C
Auxillary Box	No Auxillary Box
Auxillary Box Lead Termination	None
Base Indicator	Rigid
Bearing Grease Type	Polyrex EM (-20F +300F)
Blower	None
Current @ Voltage	4.000 A @ 460.0 V 8.000 A @ 230.0 V
Design Code	B
Drip Cover	No Drip Cover
Duty Rating	CONT
Efficiency @ 100% Load	91.0 %
Electrically Isolated Bearing	Not Electrically Isolated
Feedback Device	NO FEEDBACK
Front Shaft Indicator	None
Heater Indicator	No Heater
High Voltage Full Load Amps	4.0 a

Part detail

Revision	-
Type	AC
Mech. spec.	36P419
Base	
Status	PRD/A
Elec. spec.	36WZ630
Layout	36LYP419
Eff. date	09-11-2024
CD Diagram	CD0005
Poles	04
Leads	9#16
Proprietary	False
Created date	01-02-2024

Insulation Class	F
Inverter Code	Inverter Duty
KVA Code	K
Lifting Lugs	Standard Lifting Lugs
Locked Bearing Indicator	Locked Bearing
Max Speed	2700 rpm
Motor Lead Quantity/Wire Size	9 @ 16 AWG
Motor Lead Termination	Flying Leads
Motor Standards	NEMA
Motor Type	3640M
Mounting Arrangement	F1
Number of Poles	4
Overall Length	16.50 IN
Power Factor	77
Product Family	General Purpose
Pulley End Bearing Type	Ball
Pulley Face Code	C-Face
Pulley Shaft Indicator	Standard
Rodent Screen	None
RoHS Status	ROHS COMPLIANT
Service Factor	1.15
Shaft Diameter	1.125 IN
Shaft Ground Indicator	No Shaft Grounding
Shaft Rotation	Reversible
Shaft Slinger Indicator	No Slinger
Speed	1765 rpm
Speed Code	Single Speed
Starting Method	Direct on line
Thermal Device - Bearing	None
Thermal Device - Winding	None
Vibration Sensor Indicator	No Vibration Sensor
Winding Thermal 1	None
Winding Thermal 2	None

AC Induction Motor Performance Data

Record # 96360

Typical performance - not guaranteed values

Winding: 36WGZ630-R001		Type: 3640M	Enclosure: OPSB	
Nameplate Data			460 V, 60 Hz: High Voltage Connection	
Rated Output (HP)	3	Full Load Torque	9.01 LB-FT	
Volts	230/460	Start Configuration	direct on line	
Full Load Amps	8/4	Breakdown Torque	39.5 LB-FT	
R.P.M.	1765	Pull-up Torque	13.4 LB-FT	
Hz	60 Phase	Locked-rotor Torque	22.8 LB-FT	
NEMA Design Code	B KVA Code	Starting Current	32.4 A	
Service Factor (S.F.)	1.15	No-load Current	2.14 A	
NEMA Nom. Eff.	91 Power Factor	Line-line Res. @ 25°C	3.18 Ω	
Rating - Duty	40C AMB-CONT	Temp. Rise @ Rated Load	23°C	
S.F. Amps	9/4.5	Temp. Rise @ S.F. Load	27°C	
		Locked-rotor Power Factor	39.2	
		Rotor inertia	0.372 lb-ft ²	

Load Characteristics 460 V, 60 Hz, 3 HP

% of Rated Load	25	50	75	100	125	150	S.F.
Power Factor	36	58	70	77	81	83	79
Efficiency	84	90	91	91	90	89	90.4
Speed	1791	1783	1774	1764	1754	1744	1758
Line amperes	2.33	2.76	3.35	4.04	4.83	5.7	4.51

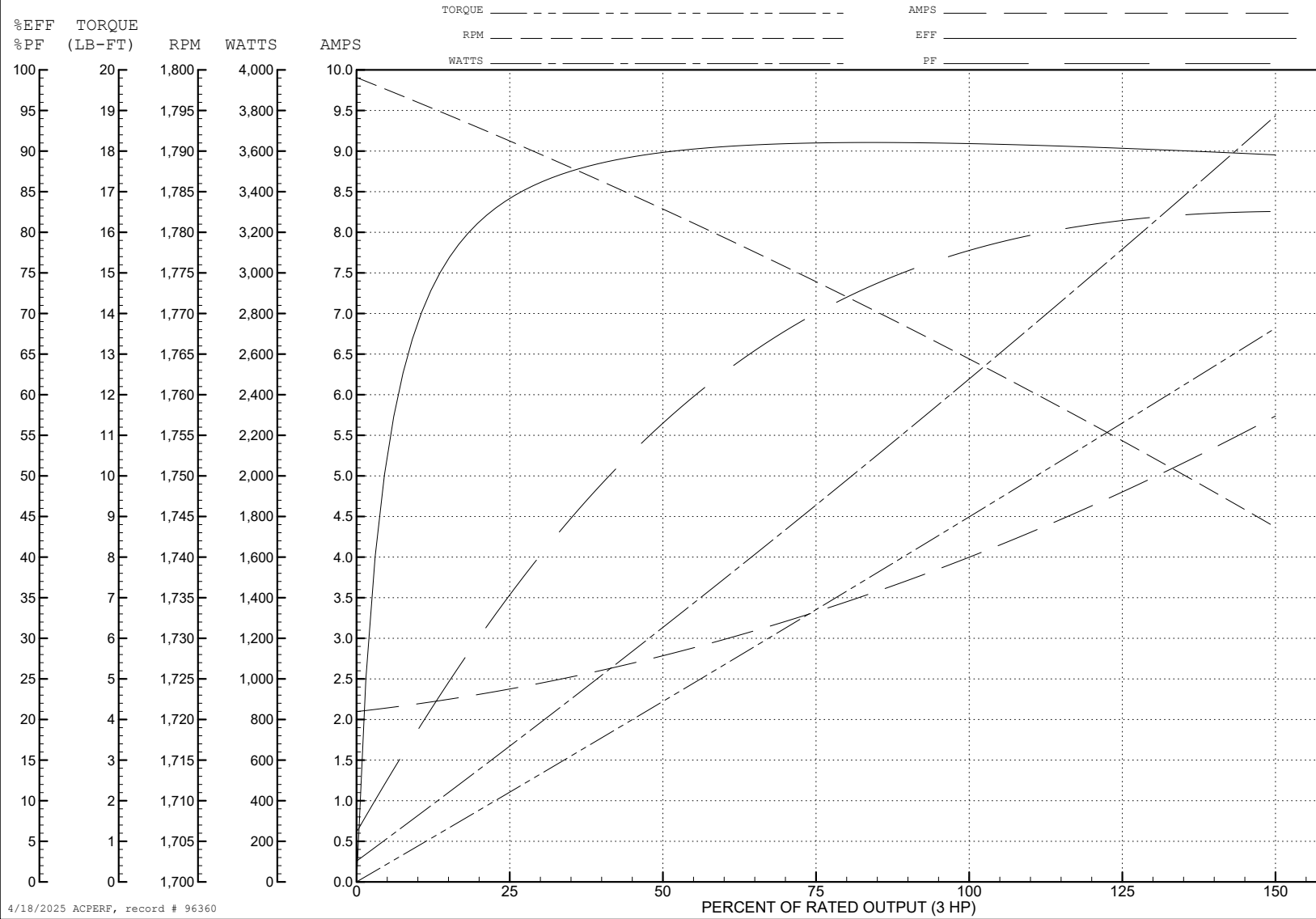
ABB Motors and Mechanical Inc.

WINDING # 36WGZ630

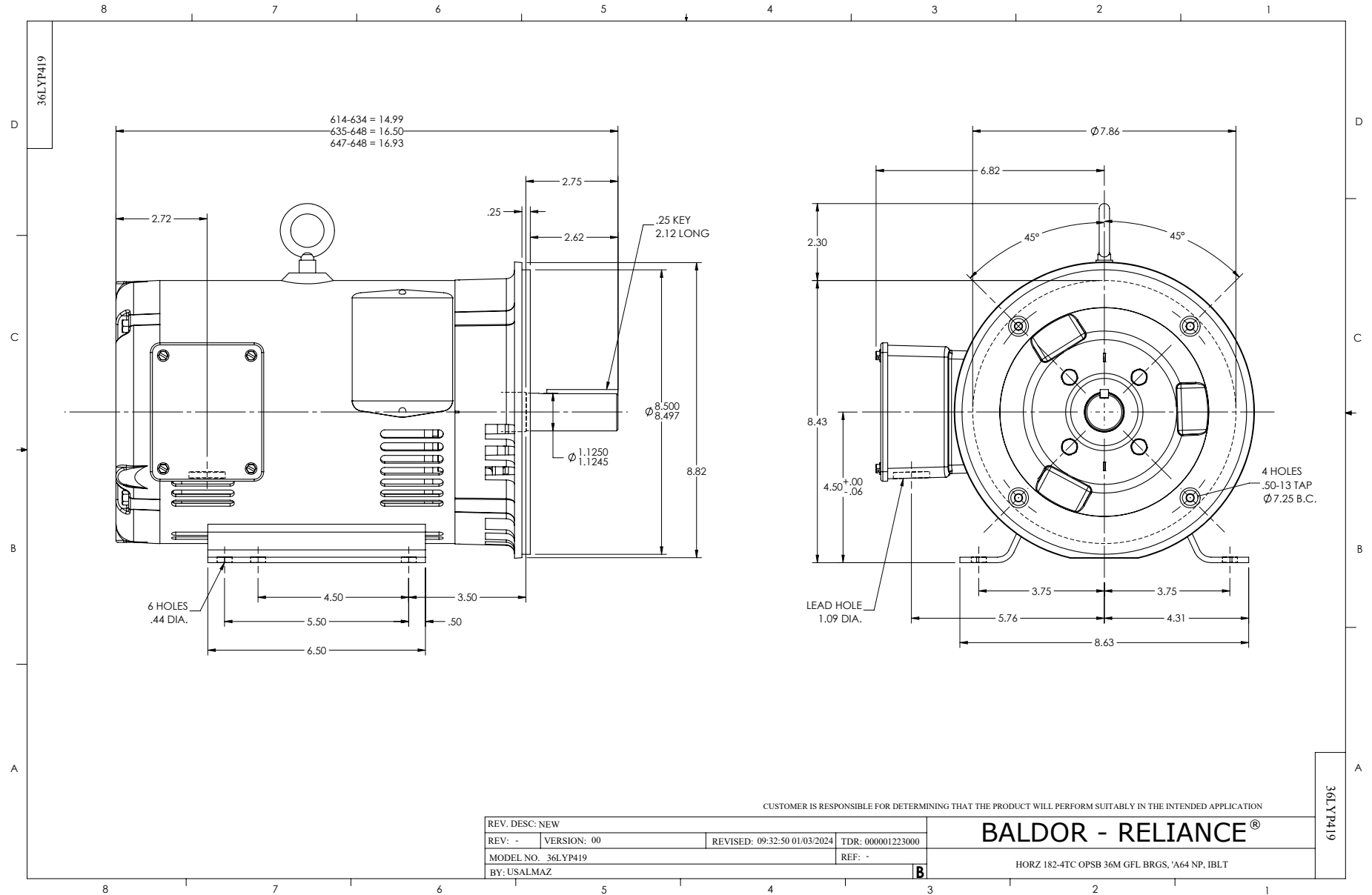
3 HP 3 PH 60 HZ 1765 RPM 460 V 3640M

Typical performance - not guaranteed values.

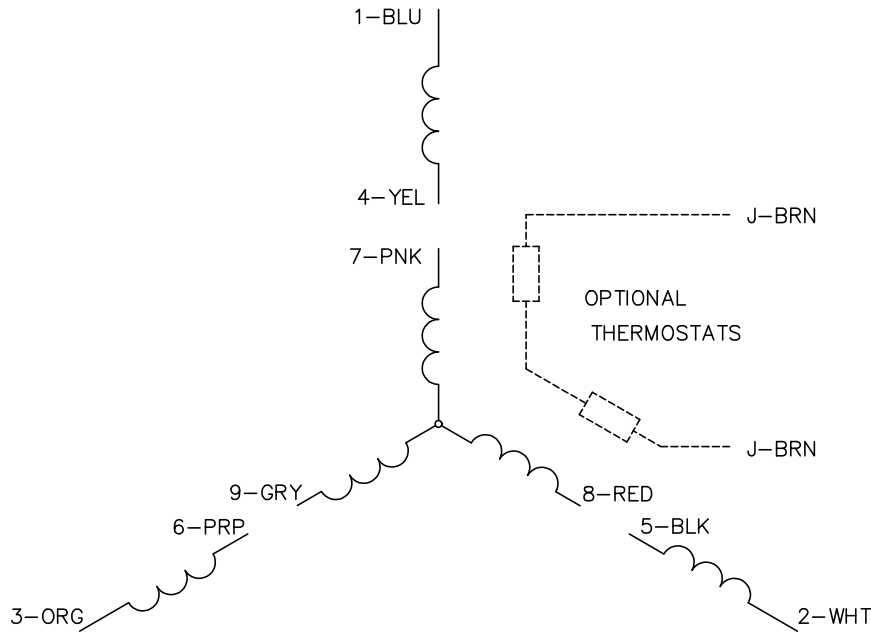
TORQUES (LB-FT): PO=39.5 PU=13.4 LR=22.8 LRA=32.4



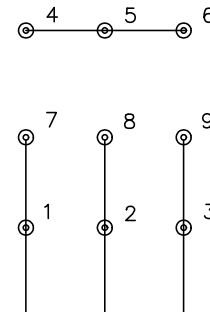
4/18/2025 ACPERF, record # 96360



CD0005

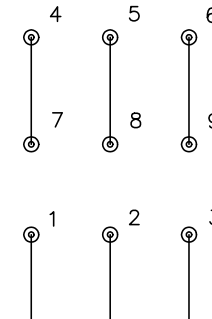


LOW VOLTAGE
(2Y)



LINE

HIGH VOLTAGE
(1Y)



LINE

NOTES:

1. INTERCHANGE ANY TWO LINE LEADS TO REVERSE ROTATION.
2. OPTIONAL THERMOSTATS ARE PROVIDED WHEN SPECIFIED.
3. ACTUAL NUMBER OF INTERNAL PARALLEL CIRCUITS MAY BE A MULTIPLE OF THOSE SHOWN ABOVE.
4. LEAD COLORS ARE OPTIONAL. LEADS MUST ALWAYS BE NUMBERED AS SHOWN.

CD0005

REV. DESC: REVISE TO SHOW OPTIONAL COLORS			
REV. LTR: E	BY: JLP	REVISED: 01/19/99 10:15	TDR: 0171435
S00000		FILE: AAA00005140	MDL: -
		MTL: -	

BALDOR ELECTRIC Co.

3PH, DV, 9 LEADS