



Customer information packet

CSPM3157T

2HP, 1770RPM, 3PH, 60HZ, 145TC, 3538M, OPSB, F1

Class - None

Division - Not Applicable

Specifications

Enclosure	ODP
Frame	145TC
Frame Material	Steel
Frequency	60.00 Hz
Haz Area Class and Group	None
Haz Area Division	Not Applicable
Motor Letter Type	Three Phase
Output @ Frequency	2.000 HP @ 60 HZ
Phase	3
Synchronous Speed @ Frequency	1800 RPM @ 60 HZ
Voltage @ Frequency	460.0 V @ 60 HZ 230.0 V @ 60 HZ
Agency Approvals	CURUSEEV NEMA_PREMIUM WEEE
Ambient Temperature	40 °C
Auxillary Box	No Auxillary Box
Auxillary Box Lead Termination	None
Base Indicator	Rigid
Bearing Grease Type	Polyrex EM (-20F +300F)
Blower	None
Current @ Voltage	5.400 A @ 230.0 V 5.800 A @ 208.0 V 2.700 A @ 460.0 V
Design Code	B
Drip Cover	No Drip Cover
Duty Rating	CONT
Efficiency @ 100% Load	88.5 %
Electrically Isolated Bearing	Not Electrically Isolated
Feedback Device	NO FEEDBACK
Front Shaft Indicator	None
Heater Indicator	No Heater

Part detail

Revision	-
Type	AC
Mech. spec.	35E6387
Base	
Status	PRD/A
Elec. spec.	35WGZ966
Layout	35LYE6387
Eff. date	10-17-2024
CD Diagram	CD0005
Poles	04
Leads	9#18
Proprietary	False
Created date	01-05-2024

High Voltage Full Load Amps	2.7 a
Insulation Class	F
Inverter Code	Inverter Duty
KVA Code	L
Lifting Lugs	No Lifting Lugs
Locked Bearing Indicator	Locked Bearing
Max Speed	2700 rpm
Motor Lead Quantity/Wire Size	9 @ 18 AWG
Motor Lead Termination	Flying Leads
Motor Standards	NEMA
Motor Type	3538M
Mounting Arrangement	F1
Number of Poles	4
Overall Length	14.38 IN
Power Factor	75
Product Family	General Purpose
Pulley End Bearing Type	Ball
Pulley Face Code	C-Face
Pulley Shaft Indicator	Standard
Rodent Screen	None
RoHS Status	ROHS COMPLIANT
Service Factor	1.15
Shaft Diameter	0.875 IN
Shaft Ground Indicator	No Shaft Grounding
Shaft Rotation	Reversible
Shaft Slinger Indicator	No Slinger
Speed	1770 rpm
Speed Code	Single Speed
Starting Method	Direct on line
Thermal Device - Bearing	None
Thermal Device - Winding	None
Vibration Sensor Indicator	No Vibration Sensor
Winding Thermal 1	None
Winding Thermal 2	None

Nameplate

NP4423A01A01L											
CAT #	CSPM3157T			WGT	56	LBS					
SPEC	35E6387Z966			ENCL	OPSB						
SER #				CC	010A	IP	22				
HP	2	MAG CUR		3/1.5							
VOLTS	230/460			NEMA NOM. EFF			88.5				
AMPS	5.4/2.7			PF	75						
RATING	40C AMB-CONT										
RPM	1770			MAX RPM		2700					
FRAME	145TC	HZ	60	CODE	L	CLASS	F				
SER.F.	1.15	SF AMP	6/3	PH	3	DES	B				
DE	6205		ODE	6203							
LUBRICATION	POLYREX EM										
ID LOGO	INVERTER TYPE		VPWM	CHP	60	TO	90	1.5:1			
ID LOGO	WK2	0.188	CT	6	TO	60	10:1				
ID LOGO	SL HZ	1.1	VT	3	TO	60	20:1				
				QR							
YR											

AC Induction Motor Performance Data

Record # 96359

Preliminary Data Sheet

Winding: 35WGZ966-R001		Type: 3538M		Enclosure: OPSB	
Nameplate Data			460 V, 60 Hz: High Voltage Connection		
Rated Output (HP)	2	Full Load Torque	5.97 LB-FT		
Volts	230/460	Start Configuration	direct on line		
Full Load Amps	5.4/2.7	Breakdown Torque	24.8 LB-FT		
R.P.M.	1770	Pull-up Torque	10.9 LB-FT		
Hz	60 Phase	3	Locked-rotor Torque	16 LB-FT	
NEMA Design Code	B KVA Code	L	Starting Current	24.2 A	
Service Factor (S.F.)		1.15	No-load Current	1.48 A	
NEMA Nom. Eff.	88.5 Power Factor	75	Line-line Res. @ 25°C	7.62 Ω	
Rating - Duty	40C AMB-CONT		Temp. Rise @ Rated Load	31°C	
S.F. Amps	6/3		Temp. Rise @ S.F. Load	36°C	
			Locked-rotor Power Factor	51.9	
			Rotor inertia	0.274 lb-ft ²	

Load Characteristics 460 V, 60 Hz, 2 HP

% of Rated Load	25	50	75	100	125	150	S.F.
Power Factor	37	58	71	78	83	86	81
Efficiency	80.5	87.4	88.8	88.9	88.2	87.1	88.5
Speed	1791	1785	1778	1770	1761	1753	1765
Line amperes	1.59	1.86	2.25	2.7	3.21	3.78	3.01

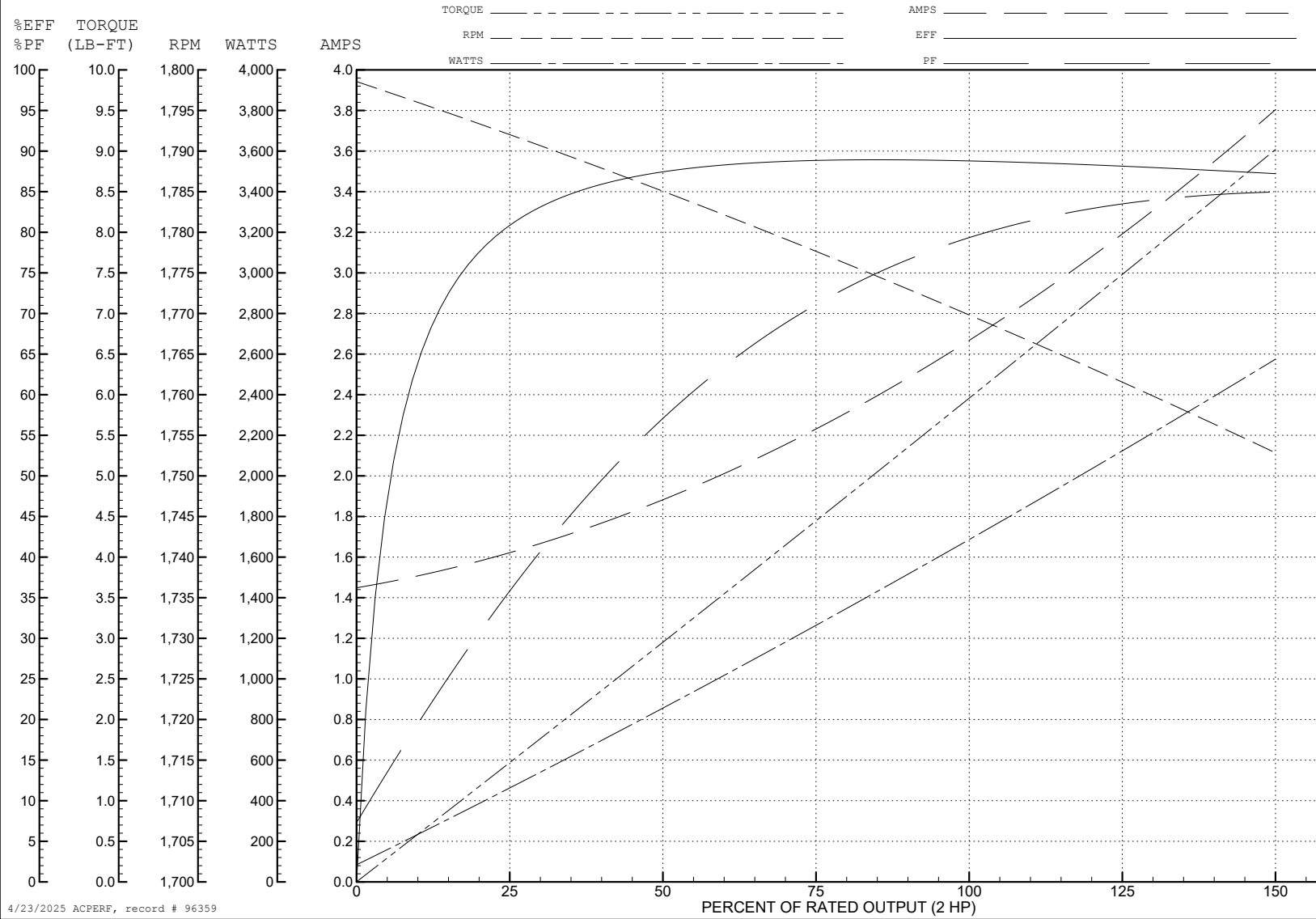
ABB Motors and Mechanical Inc.

WINDING # 35WGZ966

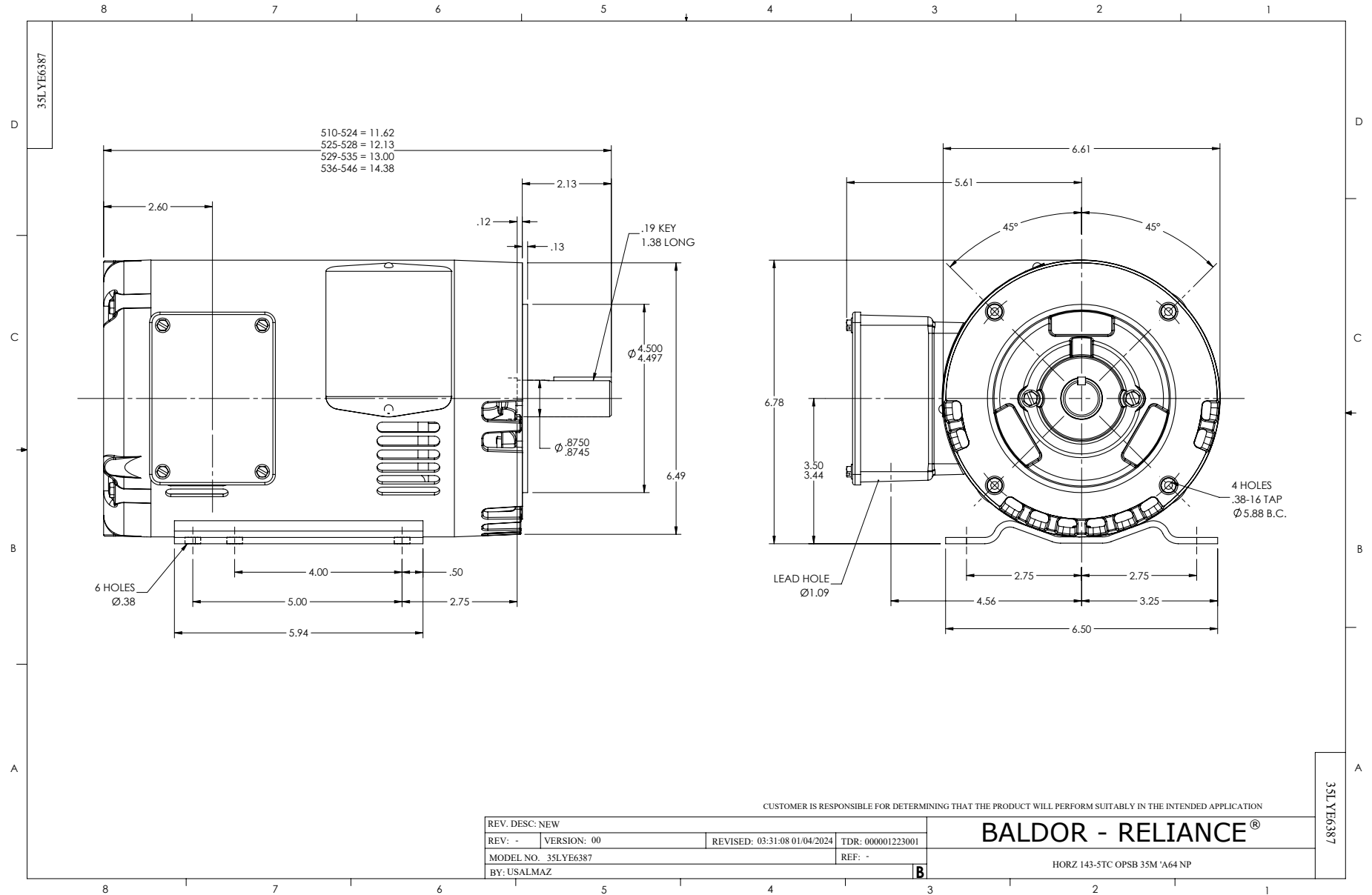
Typical performance - not guaranteed values.

2 HP 3 PH 60 HZ 1770 RPM 460 V 3538M

TORQUES (LB-FT): PO=24.8 PU=10.9 LR=16 LRA=24.2



4/23/2025 ACPERF, record # 96359



CD0005



LOW VOLTAGE
(2Y)



LINE

HIGH VOLTAGE
(1Y)



LINE

NOTES:

1. INTERCHANGE ANY TWO LINE LEADS TO REVERSE ROTATION.
2. OPTIONAL THERMOSTATS ARE PROVIDED WHEN SPECIFIED.
3. ACTUAL NUMBER OF INTERNAL PARALLEL CIRCUITS MAY BE A MULTIPLE OF THOSE SHOWN ABOVE.
4. LEAD COLORS ARE OPTIONAL. LEADS MUST ALWAYS BE NUMBERED AS SHOWN.

CD0005

REV. DESC: REVISE TO SHOW OPTIONAL COLORS			
REV. LTR: E	BY: JLP	REVISED: 01/19/99 10:15	TDR: 0171435
S00000		FILE: AAA00005140	MDL: -
		MTL: -	

BALDOR ELECTRIC Co.

3PH, DV, 9 LEADS