

ABB BALDOR RELIANCE III

Customer information packet

CSPM3154T

1.5HP, 1770RPM, 3PH, 60HZ, 145TC, 3528M, OPSB

Class - None

Division - Not Applicable

Specifications

Enclosure	OPSB
Frame	145TC
Frame Material	Steel
Frequency	60.00 Hz
Haz Area Class and Group	None
Haz Area Division	Not Applicable
Motor Letter Type	Three Phase
Output @ Frequency	1.500 HP @ 60 HZ
Phase	3
Synchronous Speed @ Frequency	1800 RPM @ 60 HZ
Voltage @ Frequency	230.0 V @ 60 HZ 460.0 V @ 60 HZ
Agency Approvals	WEEE NEMA PREMIUM 4
Ambient Temperature	40 °C
Auxiliary Box	NO AUXILLARY BOX
Auxiliary Box Lead Termination	None
Base Indicator	Rigid
Bearing Grease Type	Polyrex EM (-20F +300F)
Blower	None
Current @ Voltage	2.250 A @ 460.0 V 4.500 A @ 230.0 V
Design Code	B
Drip Cover	No Drip Cover
Duty Rating	CONT
Efficiency @ 100% Load	87.5 %
Electrically Isolated Bearing	Not Electrically Isolated
Feedback Device	NO FEEDBACK
Front Shaft Indicator	None
Heater Indicator	No Heater
High Voltage Full Load Amps	2.3 a
Insulation Class	F

Part Detail

Revision	B
Type	AC
Mech. spec.	35E6387
Base	
Status	PRD/A
Elec. spec.	35WGZ964
Layout	35LYE6387
Eff. date	11-19-2025
CD Diagram	CD0005
Poles	04
Leads	9#18
Proprietary	False
Created date	01-05-2024

Inverter Code	Inverter Duty
KVA Code	M
Lifting Lugs	No Lifting Lugs
Locked Bearing Indicator	Locked Bearing
Max Speed	2700 rpm
Motor Lead Quantity/Wire Size	9 @ 18 AWG
Motor Lead Termination	Flying Leads
Motor Standards	NEMA
Motor Type	3528M
Mounting Arrangement	F1
Number of Poles	4
Overall Length	12.13 IN
Power Factor	72
Product Family	General Purpose
Pulley End Bearing Type	Ball
Pulley Face Code	C-Face
Pulley Shaft Indicator	Standard
Rodent Screen	None
RoHS Status	ROHS COMPLIANT
Service Factor	1.15
Shaft Diameter	0.875 IN
Shaft Ground Indicator	No Shaft Grounding
Shaft Rotation	Reversible
Shaft Slinger Indicator	No Slinger
Speed	1770 rpm
Speed Code	Single Speed
Starting Method	Direct on line
Thermal Device - Bearing	None
Thermal Device - Winding	None
Vibration Sensor Indicator	No Vibration Sensor
Winding Thermal 1	None
Winding Thermal 2	None

Nameplate

NP4423A01A01L

CAT #	CSPM3154T	WGT	45	LBS	
SPEC	35E6387Z964	ENCL	OPSB		
SER #		CC	010A	IP	23
HP	1.5	MAG CUR	1.45		
VOLTS	230/460	NEMA NOM. EFF		87.5	
AMPS	4.5/2.25	PF	72		
RATING	40C AMB-CONT				
RPM	1770	MAX RPM	2700		
FRAME	145TC	HZ	60	CODE	M
		CLASS	F		
SER.F.	1.15	SF AMP	4.9/2.45	PH	3
		DES	B		
DE	6205	ODE	6203		
LUBRICATION	POLYREX EM				
ID LOGO	INVERTER TYPE	VPWM	CHP	60	TO
				90	1.5:1
ID LOGO	WK2	0.202	CT	6	TO
				60	10:1
ID LOGO	SL HZ	1	VT	3	TO
				60	20:1
YR		QR			

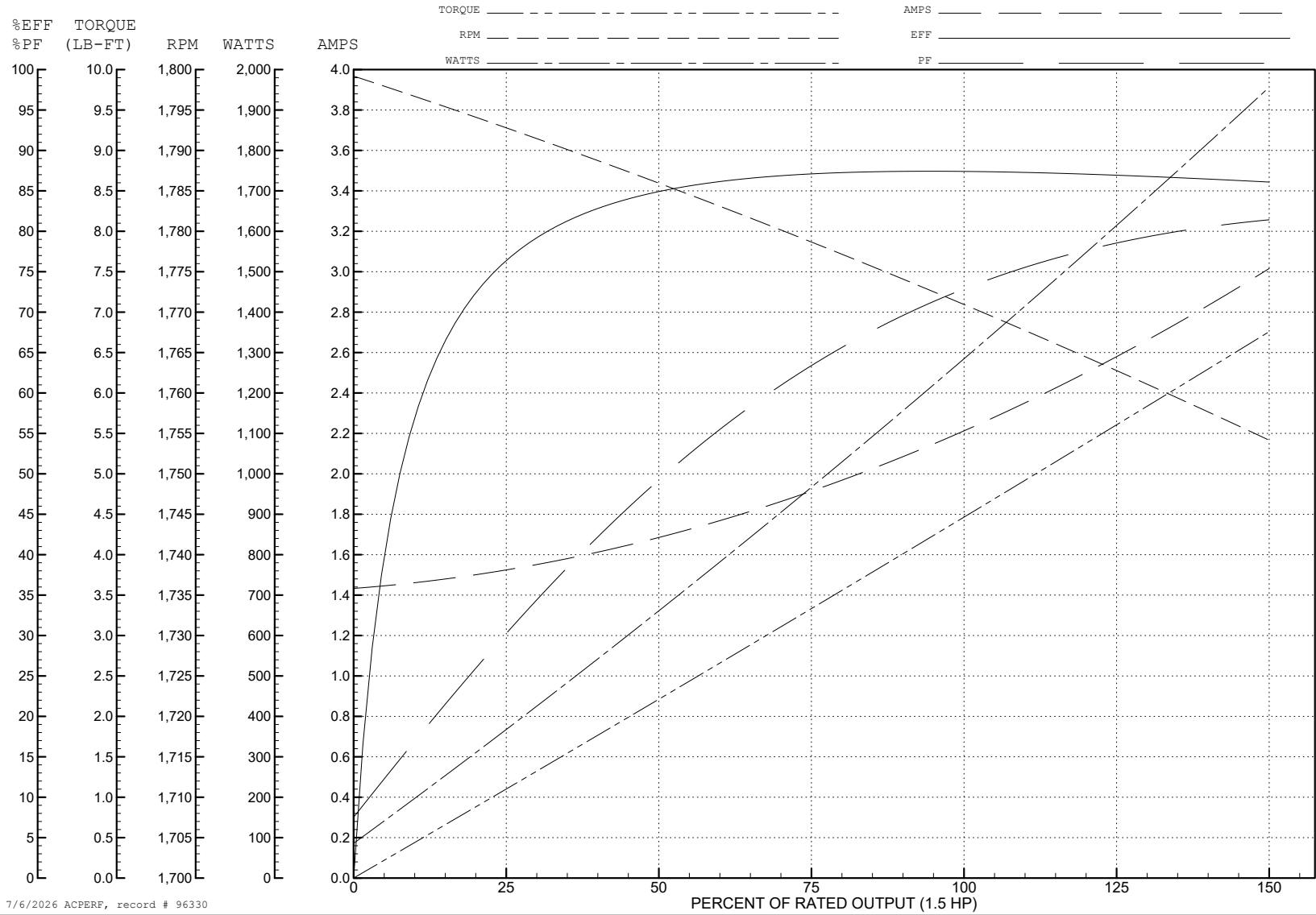
ABB Motors and Mechanical Inc.

WINDING # 35WGZ964

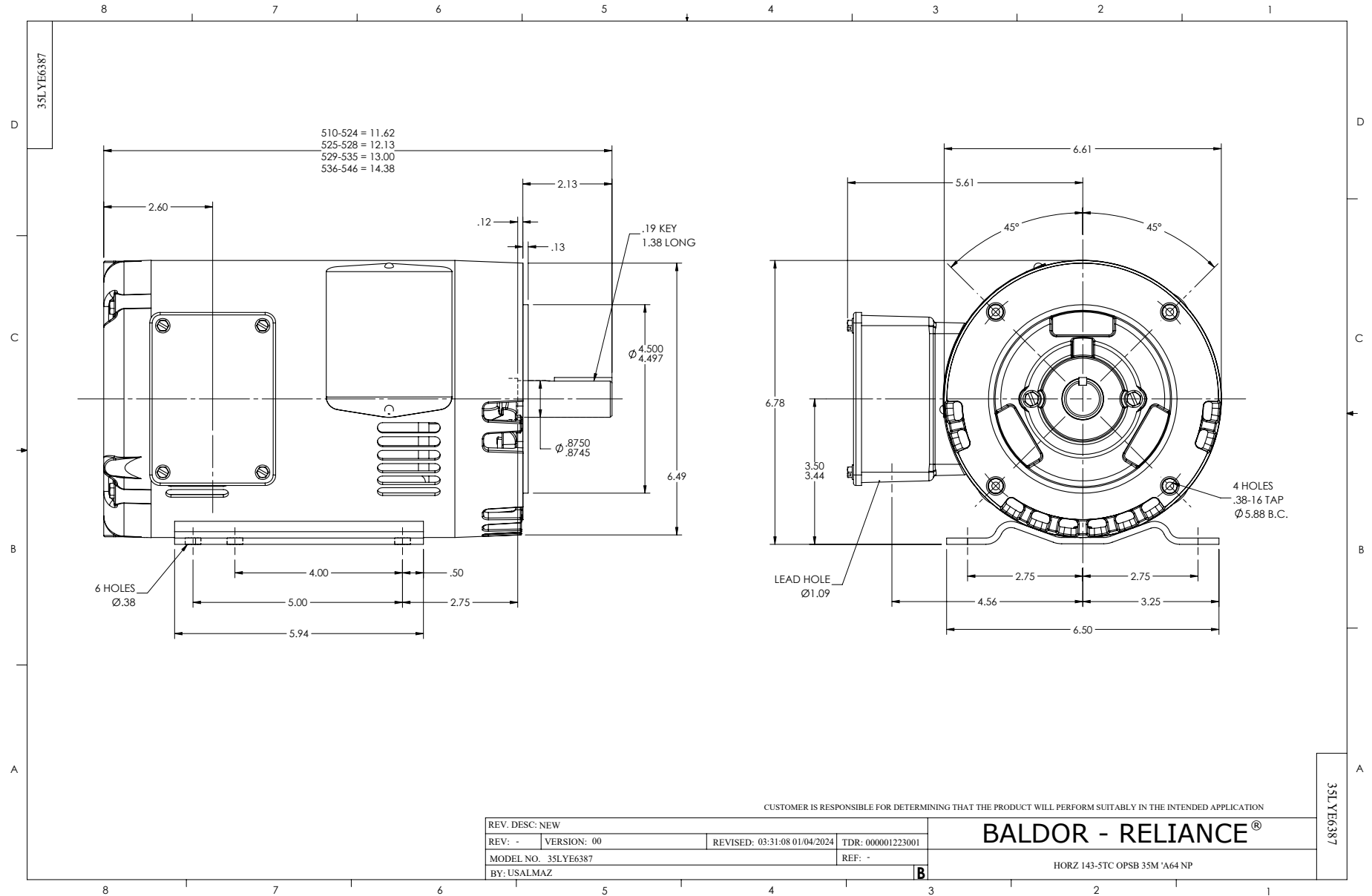
Typical performance - not guaranteed values.

1.5 HP 3 PH 60 HZ 1770 RPM 460 V 3528M

TORQUES (LB-FT): PO=20.2 PU=10.1 LR=13.3 LRA=20.7



7/6/2026 ACPERF, record # 96330



CD0005



LOW VOLTAGE
(2Y)



LINE

HIGH VOLTAGE
(1Y)



LINE

NOTES:

1. INTERCHANGE ANY TWO LINE LEADS TO REVERSE ROTATION.
2. OPTIONAL THERMOSTATS ARE PROVIDED WHEN SPECIFIED.
3. ACTUAL NUMBER OF INTERNAL PARALLEL CIRCUITS MAY BE A MULTIPLE OF THOSE SHOWN ABOVE.
4. LEAD COLORS ARE OPTIONAL. LEADS MUST ALWAYS BE NUMBERED AS SHOWN.

CD0005

REV. DESC: REVISE TO SHOW OPTIONAL COLORS			
REV. LTR: E	BY: JLP	REVISED: 01/19/99 10:15	TDR: 0171435
S00000		FILE: AAA00005140	MDL: -
		MTL: -	

BALDOR ELECTRIC Co.

3PH, DV, 9 LEADS