

BALDOR • RELIANCE

Customer information packet

CSPM31115

1HP, 3450RPM, 3PH, 60HZ, 56C, 3516M, OPEN, F1, N

Class - None

Division - Not Applicable

Copyright © All product information within this document is subject to ABB Motors and Mechanical Inc. copyright © protection, unless otherwise noted.

4/18/2025 2:43:07 PM

Specifications

Enclosure	OPEN
Frame	56C
Frame Material	Steel
Frequency	60.00 Hz
Haz Area Class and Group	None
Haz Area Division	Not Applicable
Motor Letter Type	Three Phase
Output @ Frequency	1.000 HP @ 60 HZ
Phase	3
Synchronous Speed @ Frequency	3600 RPM @ 60 HZ
Voltage @ Frequency	230.0 V @ 60 HZ 460.0 V @ 60 HZ
Agency Approvals	WEEE NEMA PREMIUM
Ambient Temperature	40 °C
Auxillary Box	No Auxillary Box
Auxillary Box Lead Termination	None
Base Indicator	Rigid
Bearing Grease Type	Polyrex EM (-20F +300F)
Blower	None
Current @ Voltage	1.300 A @ 460.0 V 2.600 A @ 230.0 V
Design Code	B
Drip Cover	No Drip Cover
Duty Rating	CONT
Efficiency @ 100% Load	82.5 %
Electrically Isolated Bearing	Not Electrically Isolated
Feedback Device	NO FEEDBACK
Front Shaft Indicator	None
Heater Indicator	No Heater
High Voltage Full Load Amps	1.3 a
Insulation Class	F

Part detail

Revision	-
Type	AC
Mech. spec.	35E6394
Base	
Status	PRD/A
Elec. spec.	35WGR933
Layout	35LYE6394
Eff. date	10-17-2024
CD Diagram	CD0005
Poles	02
Leads	9#18
Proprietary	False
Created date	01-09-2024

Inverter Code	Inverter Duty
KVA Code	L
Lifting Lugs	No Lifting Lugs
Locked Bearing Indicator	Locked Bearing
Max Speed	5400 rpm
Motor Lead Quantity/Wire Size	9 @ 18 AWG
Motor Lead Termination	Flying Leads
Motor Standards	NEMA
Motor Type	3516M
Mounting Arrangement	F1
Number of Poles	2
Overall Length	11.07 IN
Power Factor	88
Product Family	General Purpose
Pulley End Bearing Type	Ball
Pulley Face Code	C-Face
Pulley Shaft Indicator	Standard
Rodent Screen	None
RoHS Status	Y
Service Factor	1.25
Shaft Diameter	0.625 IN
Shaft Ground Indicator	No Shaft Grounding
Shaft Rotation	Reversible
Shaft Slinger Indicator	No Slinger
Speed	3450 rpm
Speed Code	Single Speed
Starting Method	Direct on line
Thermal Device - Bearing	None
Thermal Device - Winding	None
Vibration Sensor Indicator	No Vibration Sensor
Winding Thermal 1	None
Winding Thermal 2	None

AC Induction Motor Performance Data

Record # 100855

Typical performance - not guaranteed values

Winding: 35WGR933-R016		Type: 3516M	Enclosure: ODP
Nameplate Data		460 V, 60 Hz: High Voltage Connection	
Rated Output (HP)	1	Full Load Torque	1.5 LB-FT
Volts	230/460	Start Configuration	direct on line
Full Load Amps	2.6/1.3	Breakdown Torque	7.5 LB-FT
R.P.M.	3450	Pull-up Torque	4.2 LB-FT
Hz	60 Phase	Locked-rotor Torque	5.6 LB-FT
NEMA Design Code	B KVA Code	Starting Current	12.4 A
Service Factor (S.F.)	1.25	No-load Current	0.63 A
NEMA Nom. Eff.	82.5 Power Factor	Line-line Res. @ 25°C	15.2 Ω
Rating - Duty	40C AMB-CONT	Temp. Rise @ Rated Load	21°C
S.F. Amps	3.2/1.6	Temp. Rise @ S.F. Load	27°C
		Locked-rotor Power Factor	56.1
		Rotor inertia	0.0443 lb-ft ²

Load Characteristics 460 V, 60 Hz, 1 HP

% of Rated Load	25	50	75	100	125	150	S.F.
Power Factor	48	69	81	86	88	90	88
Efficiency	71.5	80.5	83.4	83.6	82.9	81.3	82.9
Speed	3560	3529	3494	3462	3423	3378	3423
Line amperes	0.7	0.85	1.04	1.28	1.58	1.86	1.58

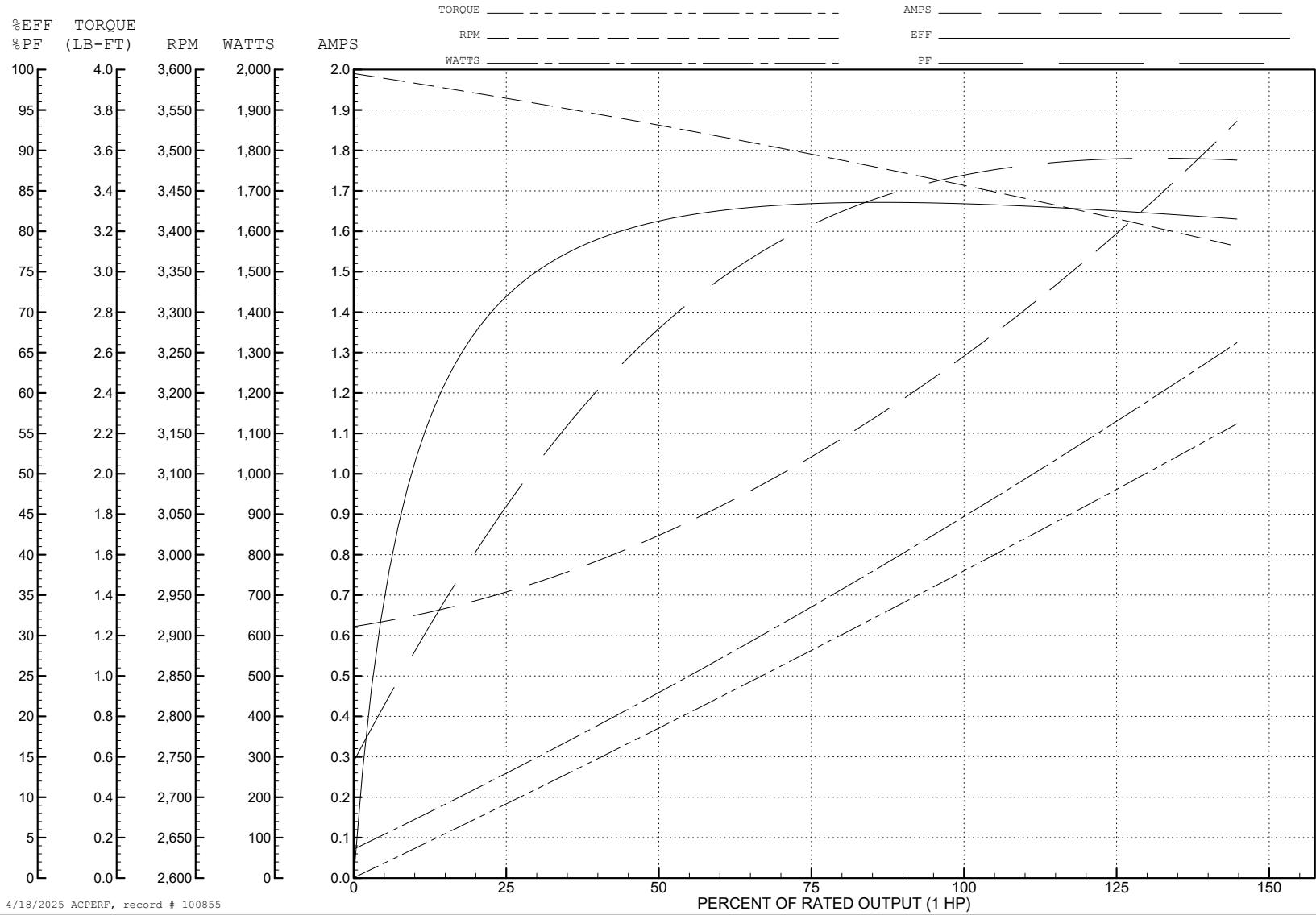
ABB Motors and Mechanical Inc.

WINDING # 35WGR933

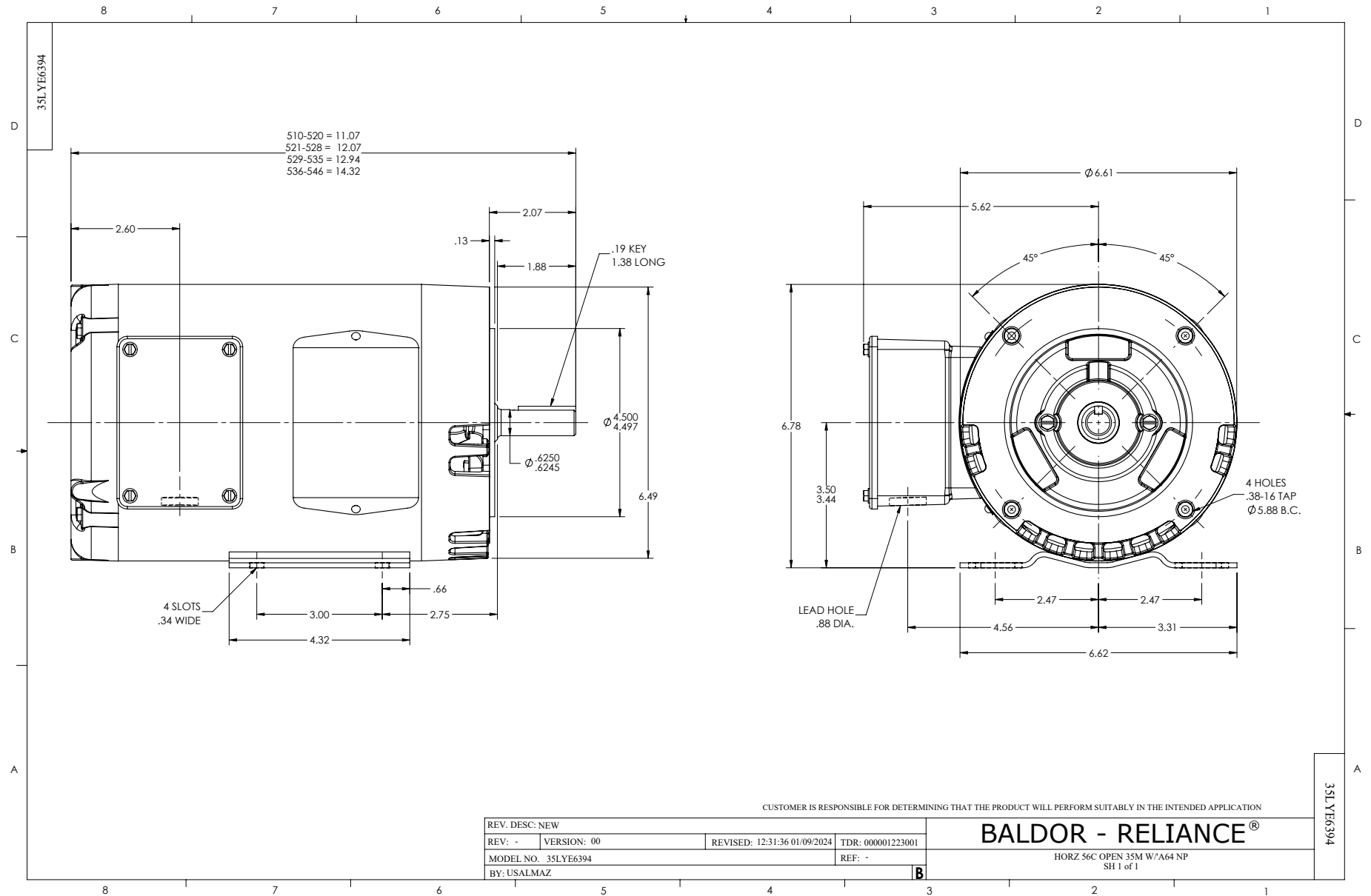
1 HP 3 PH 60 HZ 3450 RPM 460 V 3516M

Typical performance - not guaranteed values.

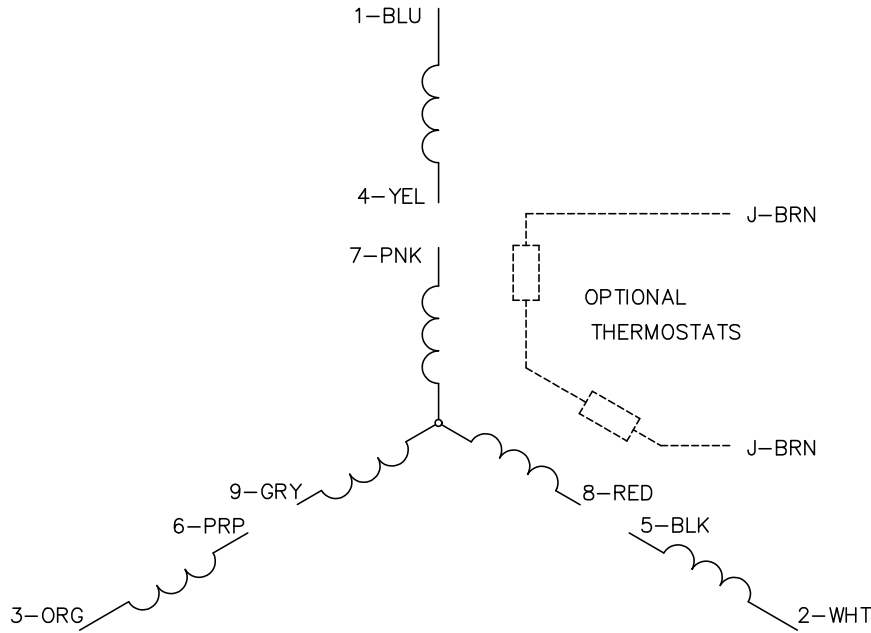
TORQUES (LB-FT): PO=7.5 PU=4.2 LR=5.6 LRA=12.4



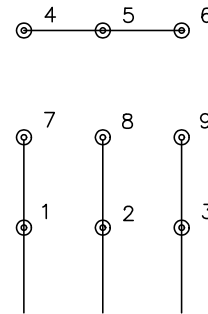
4/18/2025 ACPERF, record # 100855



CD0005

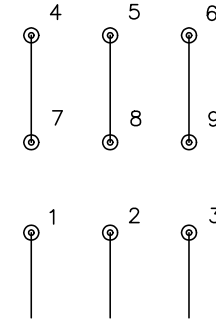


LOW VOLTAGE
(2Y)



LINE

HIGH VOLTAGE
(1Y)



LINE

NOTES:

1. INTERCHANGE ANY TWO LINE LEADS TO REVERSE ROTATION.
2. OPTIONAL THERMOSTATS ARE PROVIDED WHEN SPECIFIED.
3. ACTUAL NUMBER OF INTERNAL PARALLEL CIRCUITS MAY BE A MULTIPLE OF THOSE SHOWN ABOVE.
4. LEAD COLORS ARE OPTIONAL. LEADS MUST ALWAYS BE NUMBERED AS SHOWN.

CD0005

REV. DESC: REVISE TO SHOW OPTIONAL COLORS			
REV. LTR: E	BY: JLP	REVISED: 01/19/99 10:15	TDR: 0171435
S00000		FILE: AAA00005140	MDL: -
		MTL: -	

BALDOR ELECTRIC Co.

3PH, DV, 9 LEADS