

BALDOR • RELIANCE

Customer information packet

CSPM2511T-G

10HP, 1180RPM, 3PH, 60HZ, 256TC, 3960M, OPSB, F

Class - None

Division - Not Applicable

Specifications

Enclosure	OPSB
Frame	256TC
Frame Material	Steel
Frequency	60.00 Hz
Haz Area Class and Group	None
Haz Area Division	Not Applicable
Motor Letter Type	Three Phase
Output @ Frequency	10.000 HP @ 60 HZ
Phase	3
Synchronous Speed @ Frequency	1200 RPM @ 60 HZ
Voltage @ Frequency	230.0 V @ 60 HZ 460.0 V @ 60 HZ
Agency Approvals	NEMA PREMIUM WEEE
Ambient Temperature	40 °C
Auxiliary Box	NO AUXILLARY BOX
Auxiliary Box Lead Termination	None
Base Indicator	Rigid
Bearing Grease Type	Polyrex EM (-20F +300F)
Blower	None
Current @ Voltage	14.500 A @ 460.0 V 29.000 A @ 230.0 V 30.000 A @ 208.0 V
Design Code	A
Drip Cover	No Drip Cover
Duty Rating	CONT
Efficiency @ 100% Load	92.4 %
Electrically Isolated Bearing	Not Electrically Isolated
Feedback Device	NO FEEDBACK
Front Shaft Indicator	None
Heater Indicator	No Heater
High Voltage Full Load Amps	14.5 a

Part detail

Revision	A
Type	AC
Mech. spec.	39E776
Base	
Status	PRD/A
Elec. spec.	39WGY466
Layout	39LYE776
Eff. date	11-19-2025
CD Diagram	CD0180
Poles	06
Leads	9#12
Proprietary	False
Created date	04-04-2025

Insulation Class	F
Inverter Code	Inverter Duty
KVA Code	J
Lifting Lugs	Standard Lifting Lugs
Locked Bearing Indicator	Locked Bearing
Max Speed	1800 rpm
Motor Lead Quantity/Wire Size	9 @ 12 AWG
Motor Lead Termination	Flying Leads
Motor Standards	NEMA
Motor Type	3960M
Mounting Arrangement	F1
Number of Poles	6
Overall Length	24.21 IN
Power Factor	69
Product Family	General Purpose
Pulley End Bearing Type	Ball
Pulley Face Code	C-Face
Pulley Shaft Indicator	Standard
Rodent Screen	None
RoHS Status	ROHS COMPLIANT
Service Factor	1.15
Shaft Diameter	1.625 IN
Shaft Ground Indicator	Shaft Grounding
Shaft Rotation	Reversible
Shaft Slinger Indicator	No Slinger
Speed	1180 rpm
Speed Code	Single Speed
Starting Method	Direct on line
Thermal Device - Bearing	None
Thermal Device - Winding	None
Vibration Sensor Indicator	No Vibration Sensor
Winding Thermal 1	None
Winding Thermal 2	None

AC Induction Motor Performance Data

Record # 112283

Typical performance - not guaranteed values

Winding: 39WGY466-R003		Type: 3960M	Enclosure: OPSB	
Nameplate Data			460 V, 60 Hz: High Voltage Connection	
Rated Output (HP)	10	Full Load Torque	44.09 LB-FT	
Volts	230/460	Start Configuration	direct on line	
Full Load Amps	29/14.5	Breakdown Torque	154 LB-FT	
R.P.M.	1180	Pull-up Torque	55.7 LB-FT	
Hz	60 Phase	3	Locked-rotor Torque	67.8 LB-FT
NEMA Design Code	A KVA Code	J	Starting Current	94.3 A
Service Factor (S.F.)	1.25	No-load Current	7.75 A	
NEMA Nom. Eff.	92.4 Power Factor	69	Line-line Res. @ 25°C	0.675 Ω
Rating - Duty	40C AMB-CONT	Temp. Rise @ Rated Load	17°C	
S.F. Amps	32/16	Temp. Rise @ S.F. Load	22°C	
		Locked-rotor Power Factor	24.9	
		Rotor inertia	4.82 lb-ft ²	

Load Characteristics 460 V, 60 Hz, 10 HP

% of Rated Load	25	50	75	100	125	150	S.F.
Power Factor	33	52	63	69	73	74	73
Efficiency	84.1	90.1	91.9	92.4	92	91.5	92
Speed	1196	1192	1189	1184	1179	1174	1179
Line amperes	8.43	9.92	12.06	14.52	17.56	20.59	17.6

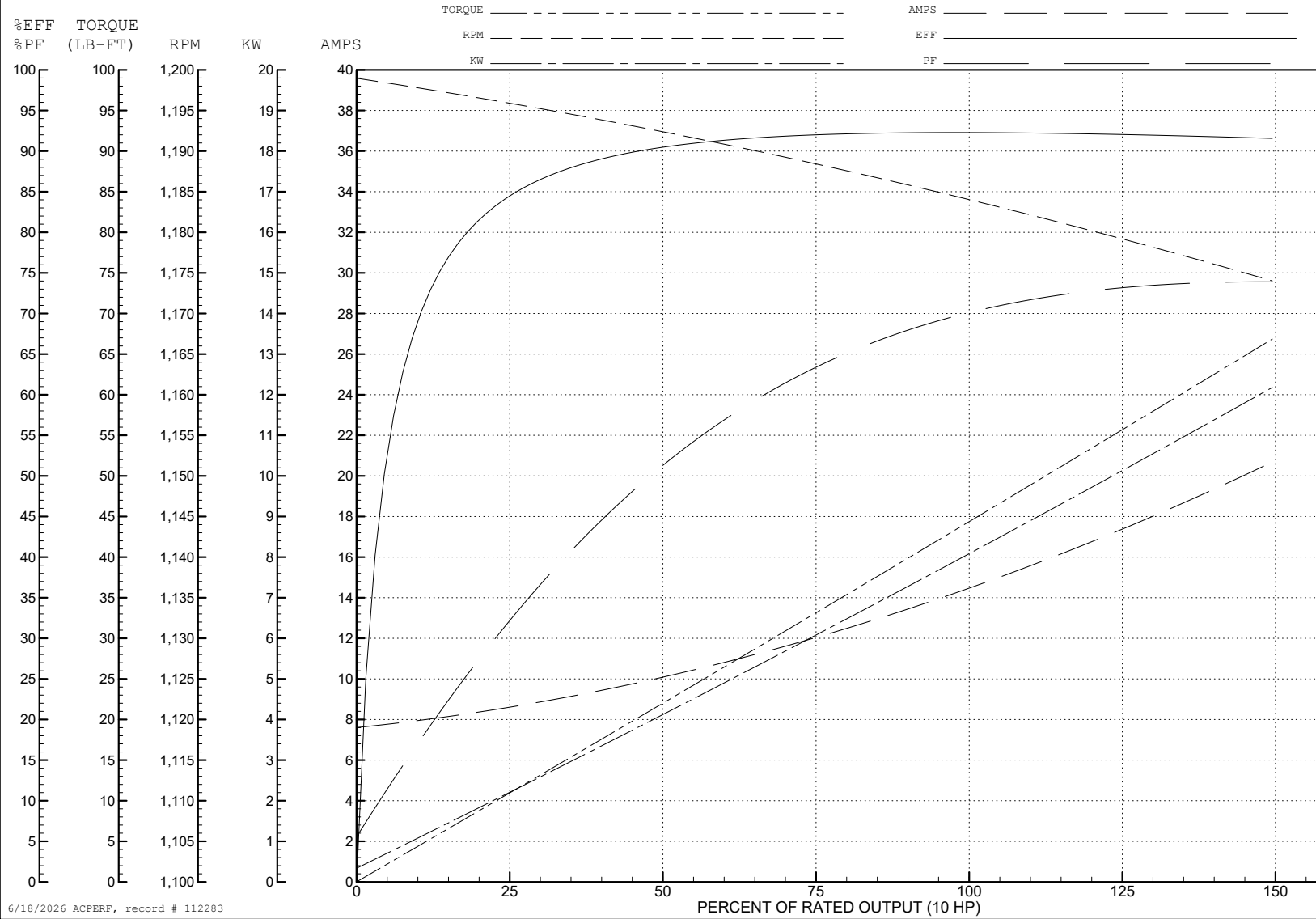
ABB Motors and Mechanical Inc.

WINDING # 39WGY466

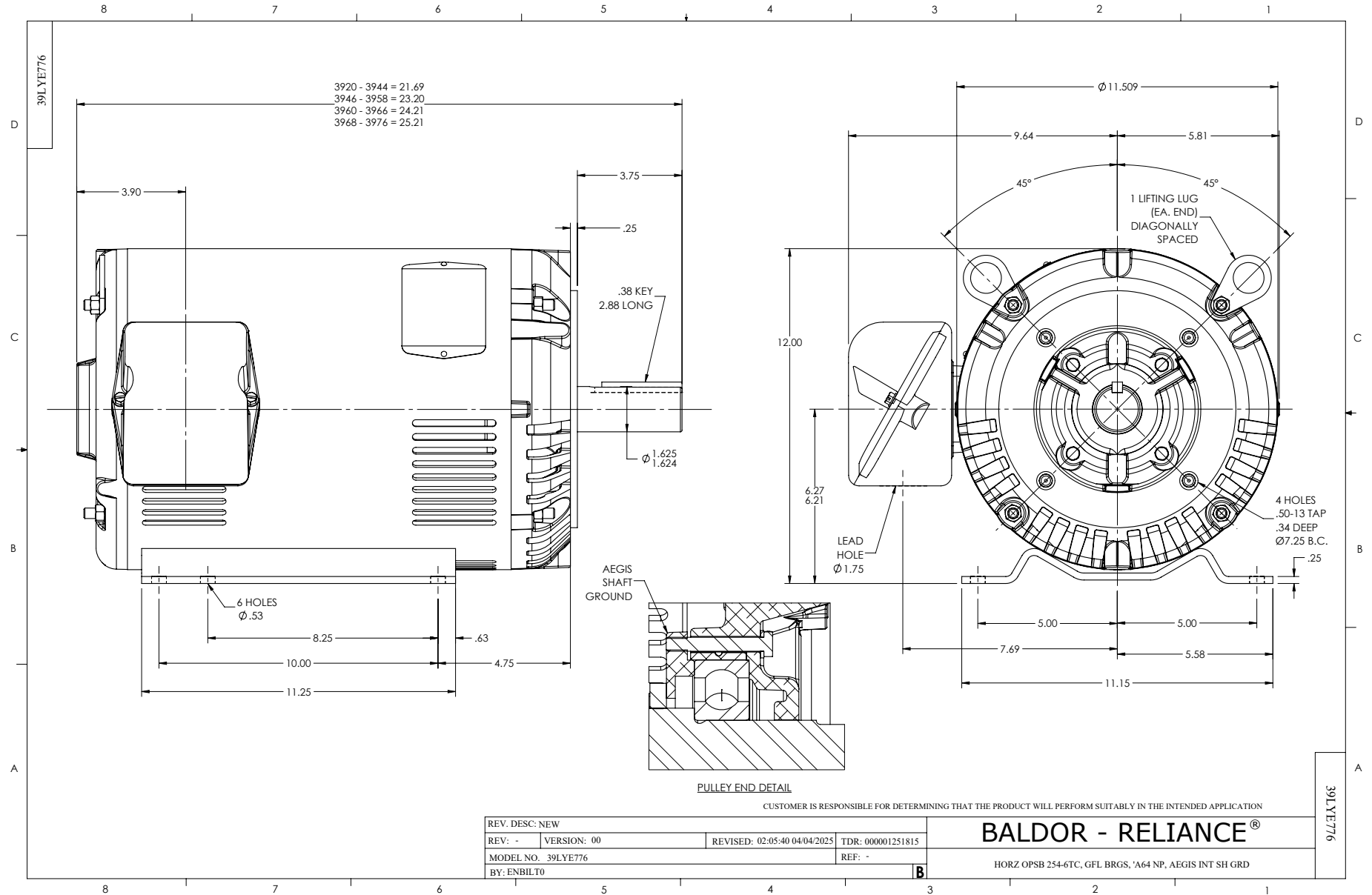
Typical performance - not guaranteed values.

10 HP 3 PH 60 HZ 1180 RPM 460 V 3960M

TORQUES (LB-FT): PO=154 PU=55.7 LR=67.8 LRA=94.3



6/18/2026 ACPERF, record # 112283



CD0180



LOW VOLTAGE
(2D)



HIGH VOLTAGE
(1D)



NOTES:

1. INTERCHANGE ANY TWO LINE LEADS TO REVERSE ROTATION.
2. OPTIONAL THERMOSTATS ARE PROVIDED WHEN SPECIFIED.
3. ACTUAL NUMBER OF INTERNAL PARALLEL CIRCUITS MAY BE A MULTIPLE OF THOSE SHOWN ABOVE.
4. LEAD COLORS ARE OPTIONAL. LEADS MUST ALWAYS BE NUMBERED AS SHOWN.

CD0180

REV. DESC: ADD CLASS CONN00000007		
REV. LTR: D	VERSION: 01	TDR: 000001099922
FILE: \AAA\00005\148	REVISED: 10:25:29 02/19/2019	BY: ENBRIRO
MTL: -	© □	

BALDOR - RELIANCE®

3PH, DV, 9 LEADS, DELTA CONNECTION

SH 1 of 1