

DUTY MASTER ALTERNATING CURRENT MOTORS

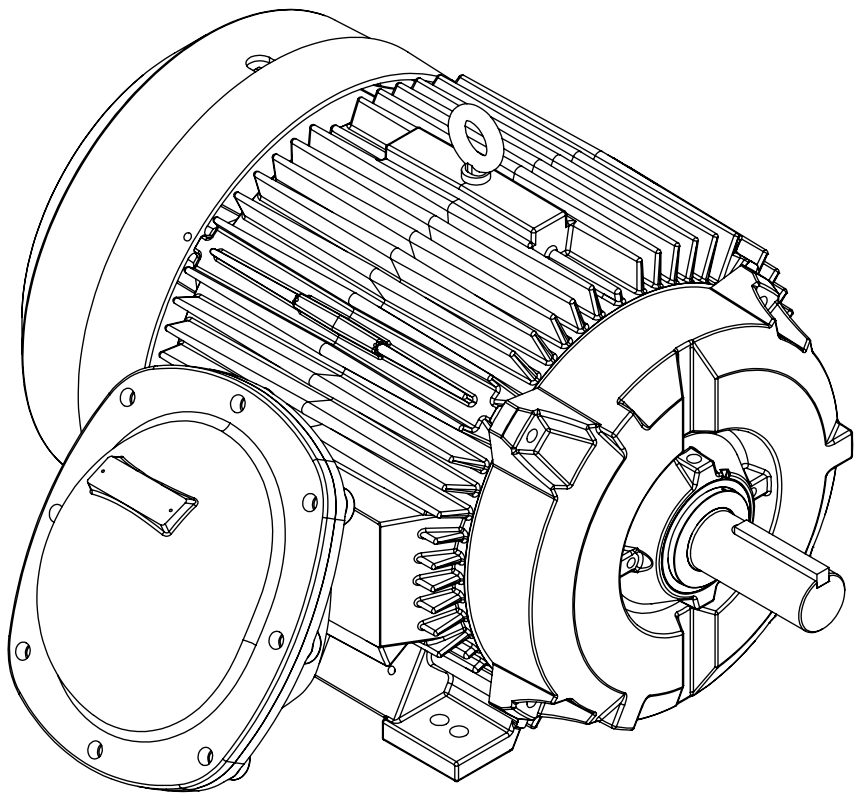
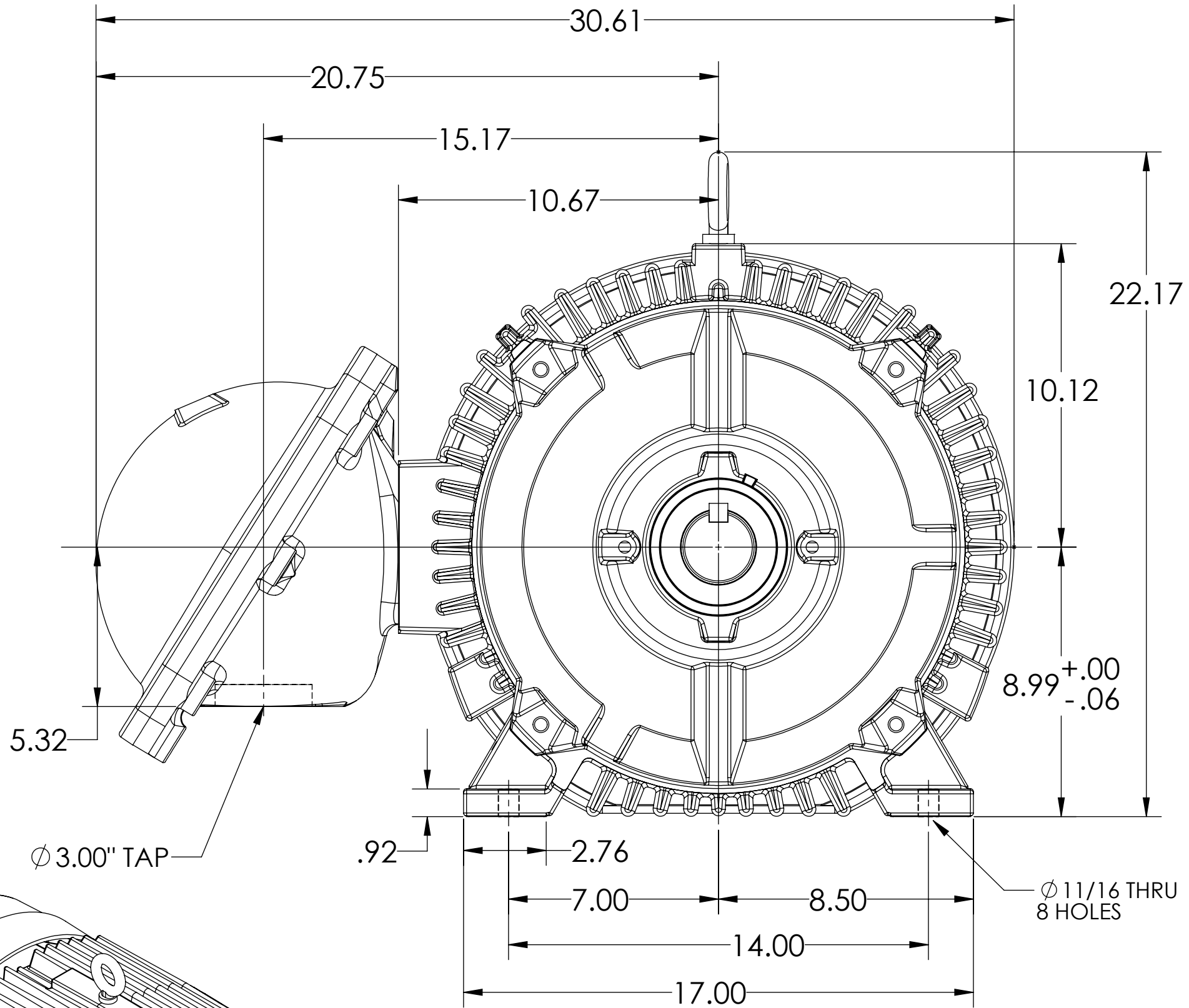
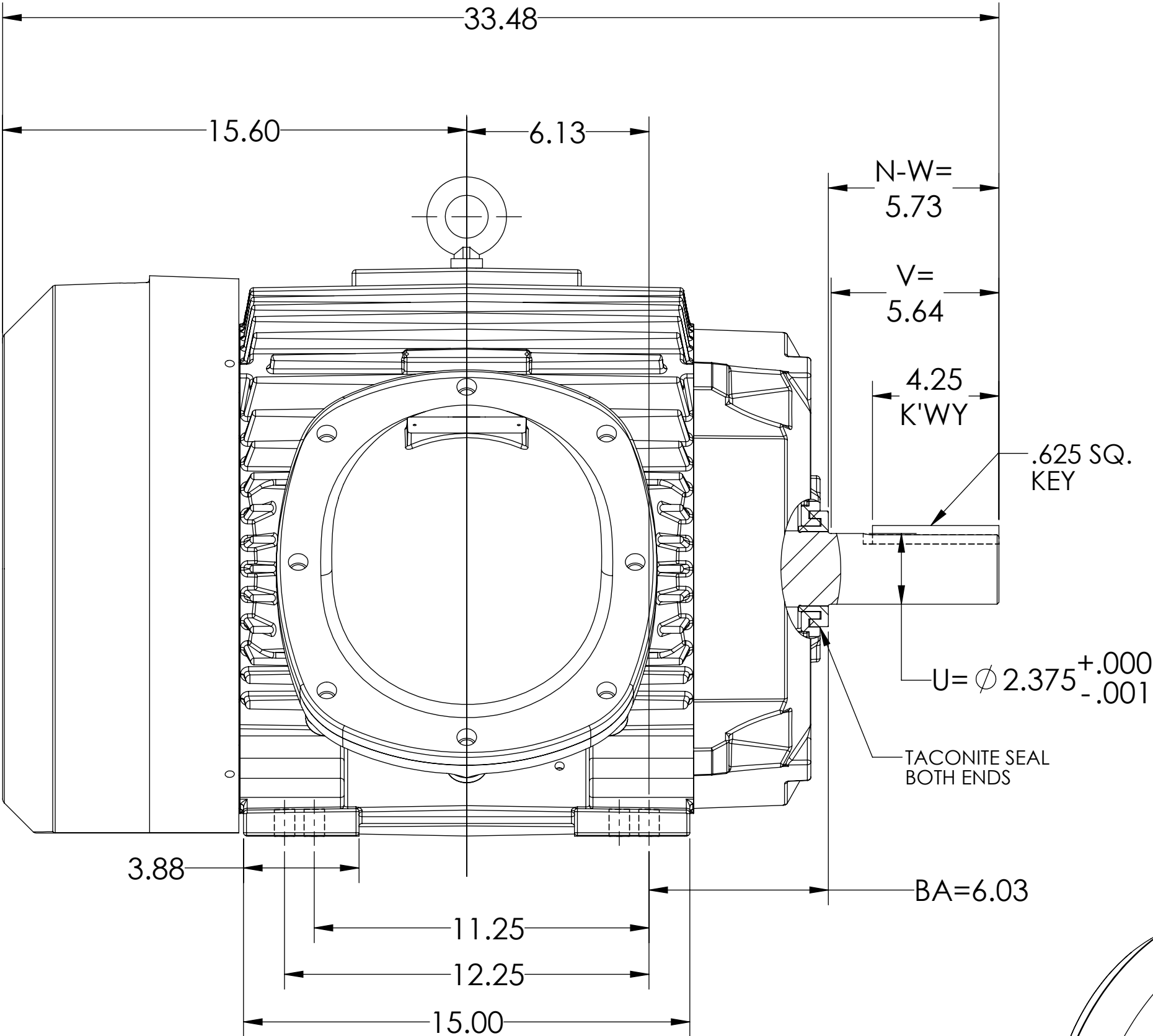
SQUIRREL-CAGE INDUCTION

ENCLOSURE: TOTALLY ENCLOSED

MOUNTING: FOOT, F-1 SIDE

FRAME 365T  
INCLUDES 364T FRAME MOUNTING HOLES  
CLASS 1 GROUP C&D / CLASS 2 GROUP E,F & G  
WITH TACONITE SEAL BOTH ENDS

COOLING: FAN-COOLED



DIMENSIONS ARE IN INCHES  
CUSTOMER IS RESPONSIBLE FOR DETERMINING THAT MOTOR PERFORMANCE IS SUITABLE IN THE APPLICATION.

REV. DESC: UPDATE RUNOUT TO .003"			
REV: A	VERSION: 01	REVISED: 02:06:51 10/07/2021	TDR: 000001179238
MODEL NO. 616512-505			
BY: USJOSUL		C	

**BALDOR**

E365T 6313 FCXP W/BOLT ON COND BOX CL 1 GR C,D CL 2 GR E,F&G

SHEET NUMBER  
1 OF 1  
505-12-505

IF MOUNTING CLEARANCE DETAILS ARE REQUIRED, CONSULT FACTORY.  
MAXIMUM PERMISSIBLE SHAFT RUNOUT WHEN MEASURED AT END OF  
STANDARD SHAFT EXTENSION IS .003" T.I.R.

616512-505