



Customer information packet

CPX21126T

10HP, 3490//2900RPM, 3PH, 60HZ, 215T, XPFC, F1

Class - CLI GP C,D; CLII GP E,F,G

Division - Division I

Specifications

Enclosure	XPFC
Frame	215T
Frame Material	Iron
Frequency	50.00 Hz 60.00 Hz
Haz Area Class and Group	CLI GP C,D; CLII GP E,F,G
Haz Area Division	Division I
Motor Letter Type	Three Phase
Output @ Frequency	10.000 HP @ 60 HZ 7.500 HP @ 50 HZ
Phase	3
Synchronous Speed @ Frequency	3600 RPM @ 60 HZ
Voltage @ Frequency	230.0 V @ 60 HZ 190.0 V @ 50 HZ 460.0 V @ 60 HZ 380.0 V @ 50 HZ
Agency Approvals	UL CSA EEV
Ambient Temperature	40 °C
Auxillary Box	No Auxillary Box
Auxillary Box Lead Termination	None
Base Indicator	Rigid
Bearing Grease Type	Polyrex EM (-20F +300F)
Blower	None
Constant Torque Speed Range	6
Current @ Voltage	22.400 A @ 230.0 V 20.800 A @ 190.0 V 11.200 A @ 460.0 V 10.400 A @ 380.0 V
Design Code	B
Drip Cover	No Drip Cover
Duty Rating	CONT

Part detail

Revision	E
Type	AC
Mech. spec.	
Base	
Status	PRD/A
Elec. spec.	07WGY361
Layout	07LY-000-018
Eff. date	04-13-2021
CD Diagram	CD0005
Poles	02
Leads	9#14
Proprietary	False
Created date	04-30-2019

Efficiency @ 100% Load	90.2 %
Electrically Isolated Bearing	Not Electrically Isolated
Enclosure Modification	Severe Duty Features
Feedback Device	NO FEEDBACK
Haz Area Temp Code	T3C
Heater Indicator	No Heater
High Voltage Full Load Amps	10.4 a
Insulation Class	F
Inverter Code	Inverter Duty
IP Rating	IP55
KVA Code	G
Lifting Lugs	Standard Lifting Lugs
Locked Bearing Indicator	Locked Bearing
Max Speed	5400 rpm
Motor Lead Termination	Flying Leads
Motor Standards	NEMA
Motor Type	0730M
Mounting Arrangement	F1
Number of Poles	2
Overall Length	20.02 IN
Power Factor	87
Product Family	Super-E Chemical Processing
Pulley Face Code	Standard
Rodent Screen	None
RoHS Status	ROHS NON-COMPLIANT
Service Factor	1.00
Shaft Diameter	1.375 IN
Shaft Ground Indicator	No Shaft Grounding
Shaft Rotation	Reversible
Speed	3490 rpm
Speed Code	Single Speed
Starting Method	Direct on line
Thermal Device - Bearing	None
Thermal Device - Winding	Normally Closed Thermostat

Vibration Sensor Indicator	No Vibration Sensor
Winding Thermal 1	None
Winding Thermal 2	None

Nameplate

NP2033XPSLEV										
NO.		CC	010A							
S/N		TEMP CODE	T3C							
SPEC.	07-0000-0122		INV.TYPE	PWM						
CAT.NO.	CPX21126T		C HP FR	60	C HP TO	90				
HP	10//7.5		CT HZ FROM	6	CT HZ TO	60				
VOLTS	230/460//190/380		VT HZ FROM	6	VT HZ TO	60				
AMPS	22.4/11.2//20.8/10.4		MAG CUR	6.6/3.3						
RPM	3490//2900		MX RPM	5400						
HZ	60//50	PH	3	CL	F	NOM.EFF.	90.2			
SER.F.	1.00	DES	B	SL HZ	1.8	WK2	0.273			
FRAME	215T	RATING	40C AMB-CONT							
BLANK	55C AMB AT 1.00 SF SINEWAVE									
	NEMA MG-1 PART 5, IP55		1.15 SF SINEWAVE							

AC Induction Motor Performance Data

Record # 75763

Typical performance - not guaranteed values

Winding: 07WGY361-R002		Type: 0730M		Enclosure: TEFC	
Nameplate Data			460 V, 60 Hz: High Voltage Connection		
Rated Output (HP)	10	Full Load Torque	15 LB-FT		
Volts	230/460//190/380	Start Configuration	direct on line		
Full Load Amps	22.4/11.2//20.8/10.4	Breakdown Torque	50.8 LB-FT		
R.P.M.	3490//2900	Pull-up Torque	19.3 LB-FT		
Hz	60//60 Phase	3	Locked-rotor Torque	26.8 LB-FT	
NEMA Design Code	B KVA Code	G	Starting Current	72.6 A	
Service Factor (S.F.)		1	No-load Current	3.34 A	
NEMA Nom. Eff.	90.2 Power Factor	87	Line-line Res. @ 25°C	0.995 Ω	
Rating - Duty	40C AMB-CONT		Temp. Rise @ Rated Load	60°C	
			Locked-rotor Power Factor	32.6	
			Rotor inertia	0.273 LB-FT ²	

Load Characteristics 460 V, 60 Hz, 10 HP

% of Rated Load	25	50	75	100	125	150
Power Factor	64	83	90	92	92	91
Efficiency	88.8	91.9	91.7	90.4	89.3	87.7
Speed	3575	3550	3524	3493	3458	3418
Line amperes	4.15	6.08	8.55	11.2	14.3	17.6

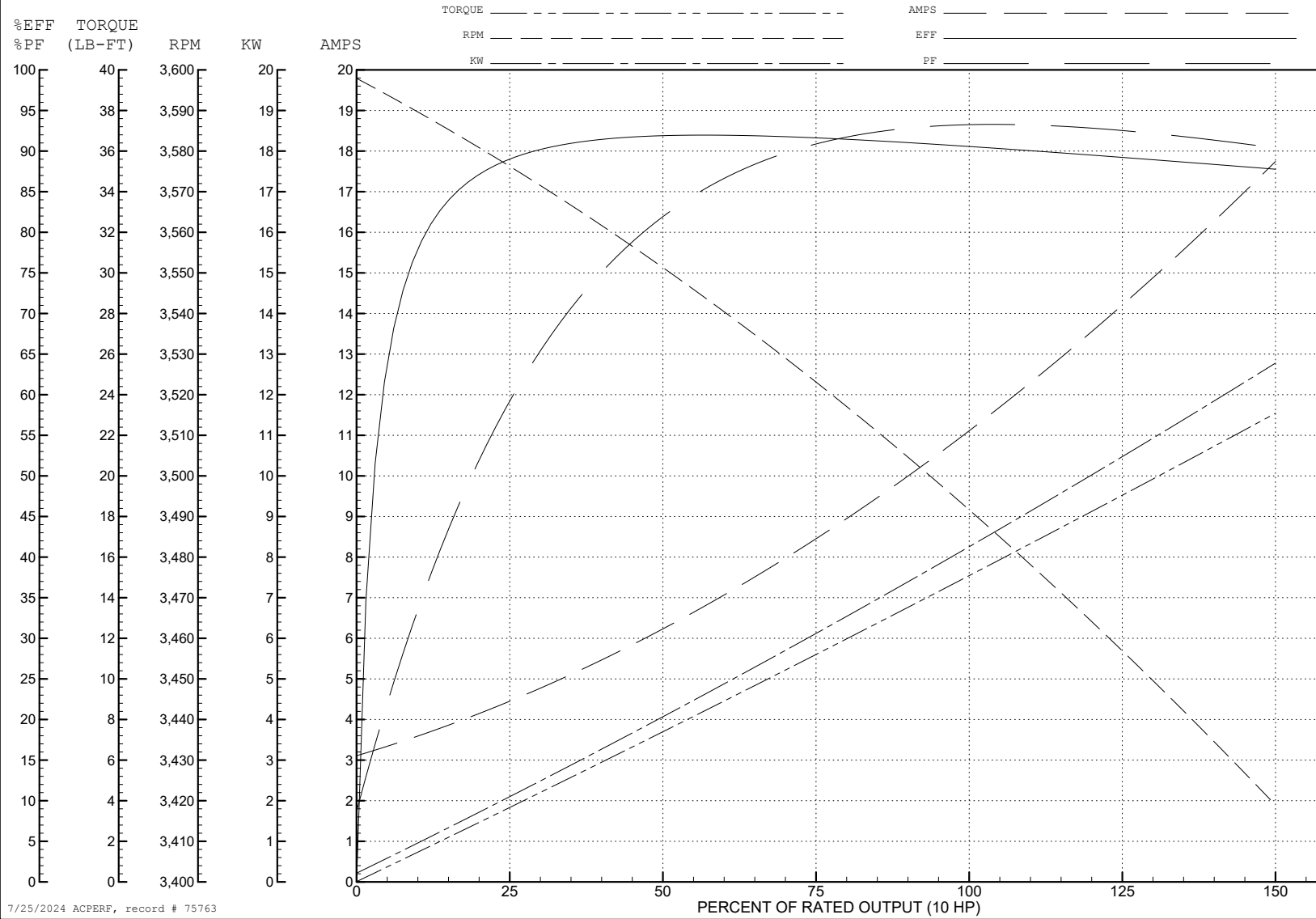
ABB Motors and Mechanical Inc.

WINDING # 07WGY361

Typical performance - not guaranteed values.

10 HP 3 PH 60 HZ 3493 RPM 460 V 0730M

TORQUES (LB-FT): PO=50.8 PU=19.3 LR=26.8 LRA=72.6



7/25/2024 ACPERF, record # 75763

AC Induction Motor Performance Data

Record # 75764

Typical performance - not guaranteed values

Winding: 07WGY361-R002		Type: 0730M		Enclosure: TEFC	
Nameplate Data			380 V, 50 Hz: High Voltage Connection		
Rated Output (HP)	10//7.5		Full Load Torque	13.54 LB-FT	
Volts	230/460//190/380		Start Configuration	direct on line	
Full Load Amps	22.4/11.2//20.8/10.4		Breakdown Torque	48.46 LB-FT	
R.P.M.	3490//2900		Pull-up Torque	20.4 LB-FT	
Hz	60//60	Phase	3	Locked-rotor Torque	28.32 LB-FT
NEMA Design Code	B KVA Code		G	Starting Current	70.44 A
Service Factor (S.F.)			1	No-load Current	3.25 A
NEMA Nom. Eff.	90.2	Power Factor	87	Line-line Res. @ 25°C	0.995 Ω
Rating - Duty	40C AMB-CONT			Temp. Rise @ Rated Load	54°C
				Locked-rotor Power Factor	31.7
				Rotor inertia	0.273 LB-FT ²

Load Characteristics 380 V, 50 Hz, 7.5 HP

% of Rated Load	25	50	75	100	125	150
Power Factor	63	82	89	92	92	91
Efficiency	85	89.6	89.9	88.9	87.9	86.3
Speed	2976	2954	2930	2902	2871	2836
Line amperes	3.99	5.73	7.96	10.38	13.19	16.17

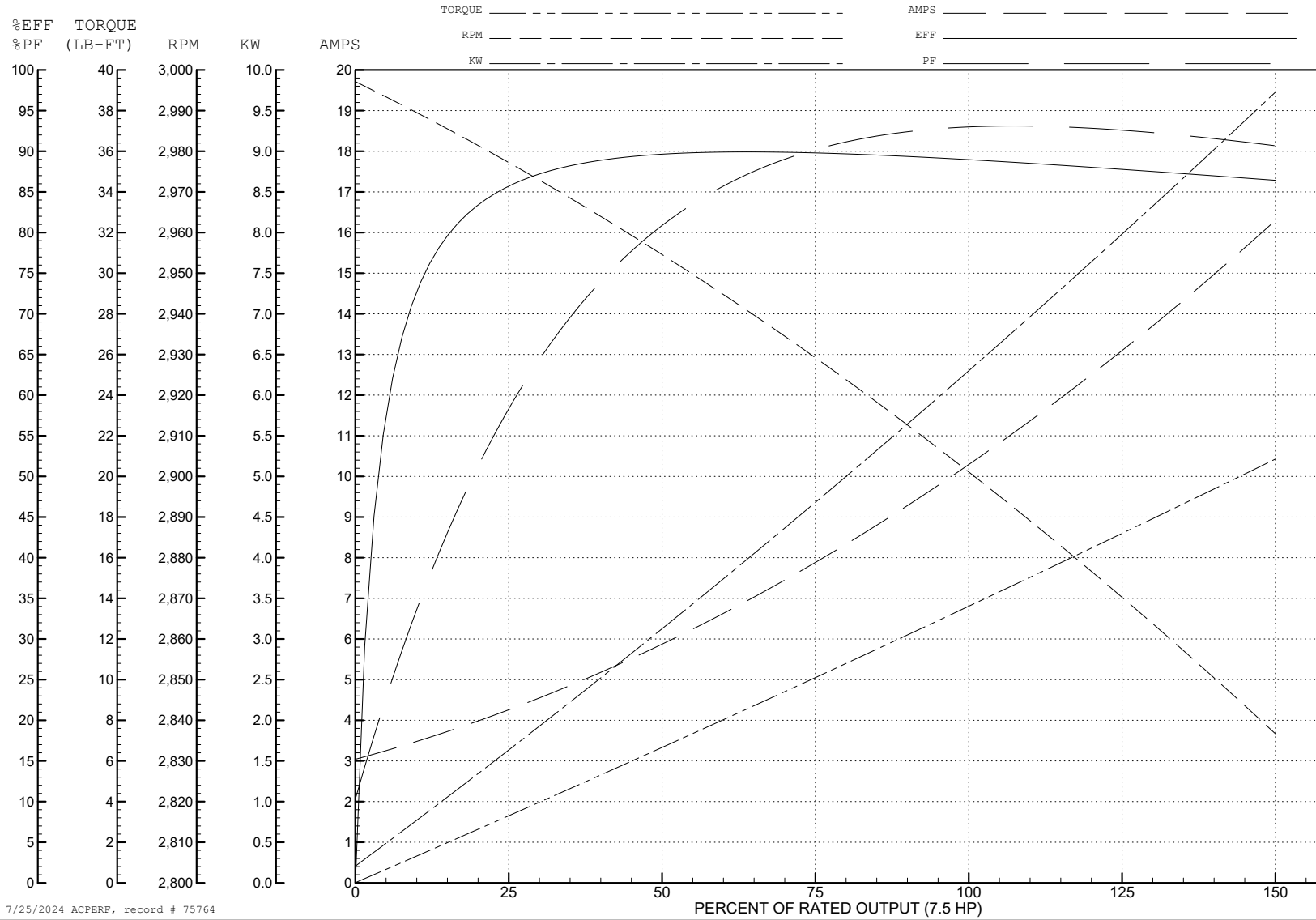
ABB Motors and Mechanical Inc.

WINDING # 07WGY361

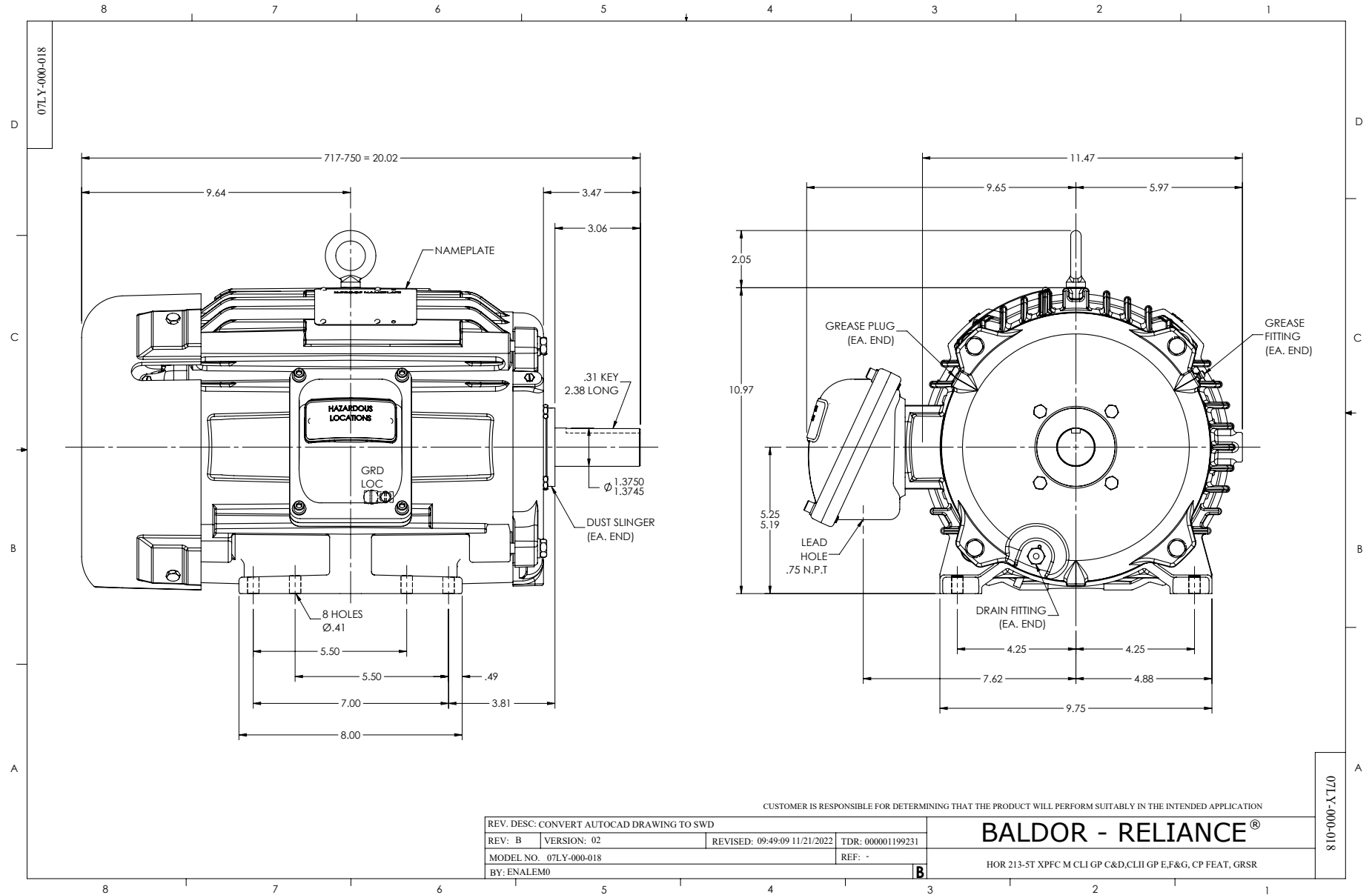
7.5 HP 3 PH 50 HZ 2902 RPM 380 V 0730M

Typical performance - not guaranteed values.

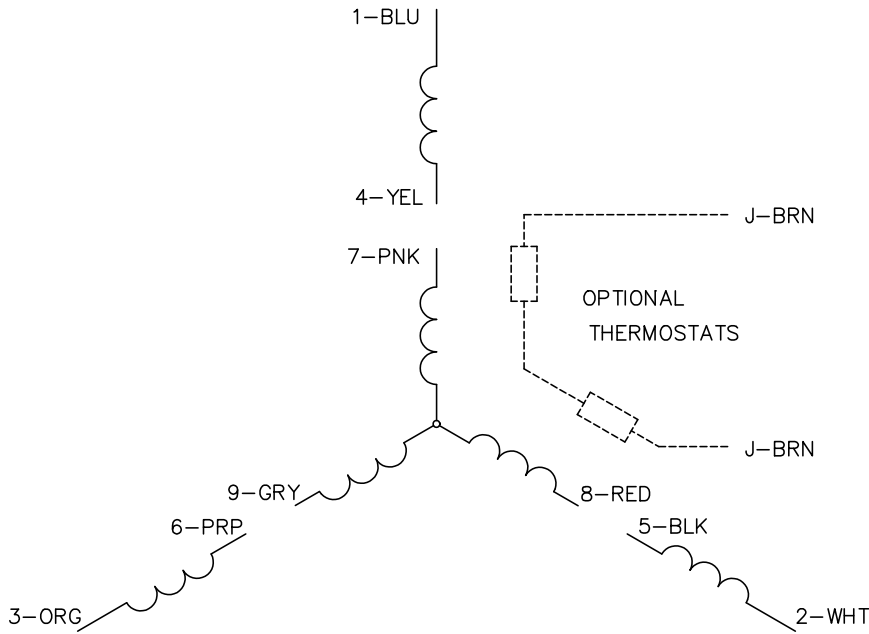
TORQUES (LB-FT): PO=48.46 PU=20.4 LR=28.32 LRA=70.44



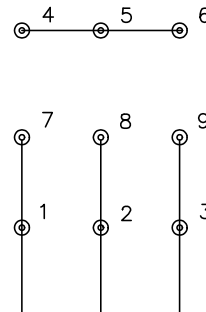
7/25/2024 ACPERF, record # 75764



CD0005

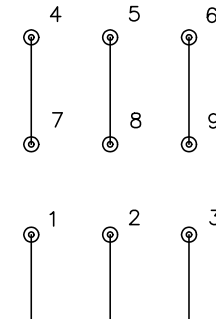


LOW VOLTAGE
(2Y)



LINE

HIGH VOLTAGE
(1Y)



LINE

NOTES:

1. INTERCHANGE ANY TWO LINE LEADS TO REVERSE ROTATION.
2. OPTIONAL THERMOSTATS ARE PROVIDED WHEN SPECIFIED.
3. ACTUAL NUMBER OF INTERNAL PARALLEL CIRCUITS MAY BE A MULTIPLE OF THOSE SHOWN ABOVE.
4. LEAD COLORS ARE OPTIONAL. LEADS MUST ALWAYS BE NUMBERED AS SHOWN.

CD0005

REV. DESC: REVISE TO SHOW OPTIONAL COLORS			
REV. LTR: E	BY: JLP	REVISED: 01/19/99 10:15	TDR: 0171435
S00000		FILE: AAA00005140	MDL: -
		MTL: -	

BALDOR ELECTRIC Co.

3PH, DV, 9 LEADS