

**BALDOR • RELIANCE**

---

# Customer information packet

## CPX18526T

5//3HP, 3500//2900RPM, 3PH, 60//50HZ, 184T, X

Class - CLI GP C,D; CLII GP E,F,G

Division - Division I

## Specifications

Enclosure	XPFC
Frame	184T
Frame Material	Iron
Frequency	50.00 Hz 60.00 Hz
Motor Letter Type	Three Phase
Output @ Frequency	3.000 HP @ 50 HZ 5.000 HP @ 60 HZ
Phase	3
Synchronous Speed @ Frequency	3600 RPM @ 60 HZ
Voltage @ Frequency	230.0 V @ 60 HZ 190.0 V @ 50 HZ 460.0 V @ 60 HZ 380.0 V @ 50 HZ
XP Class and Group	CLI GP C,D; CLII GP E,F,G
XP Division	Division I
Agency Approvals	UL CSA EEV
Ambient Temperature	40 °C
Auxillary Box	No Auxillary Box
Auxillary Box Lead Termination	None
Base Indicator	Rigid
Bearing Grease Type	Polyrex EM (-20F +300F)
Blower	None
Constant Torque Speed Range	6
Current @ Voltage	8.400 A @ 190.0 V 5.500 A @ 460.0 V 4.200 A @ 380.0 V 11.000 A @ 230.0 V
Design Code	A
Drip Cover	No Drip Cover
Duty Rating	CONT

## Part detail

Revision	G
Type	AC
Mech. spec.	
Base	
Status	PRD/A
Elec. spec.	06WGW431
Layout	06LYJ961
Eff. date	05-02-2024
CD Diagram	CD0005
Poles	02
Leads	9#16
Proprietary	False
Created date	02-06-2019

Efficiency @ 100% Load	88.5 %
Electrically Isolated Bearing	Not Electrically Isolated
Enclosure Modification	Severe Duty Features
Feedback Device	NO FEEDBACK
Heater Indicator	No Heater
High Voltage Full Load Amps	4.2 a
Insulation Class	F
Inverter Code	Inverter Duty
IP Rating	IP55
KVA Code	L
Lifting Lugs	Standard Lifting Lugs
Locked Bearing Indicator	Locked Bearing
Max Speed	5400 rpm
Motor Lead Termination	Flying Leads
Motor Standards	NEMA
Motor Type	0640M
Mounting Arrangement	F1
Number of Poles	2
Overall Length	17.59 IN
Power Factor	96
Product Family	Super-E Chemical Processing
Pulley Face Code	Standard
Rodent Screen	None
RoHS Status	ROHS NON-COMPLIANT
Service Factor	1.00
Shaft Diameter	1.125 IN
Shaft Ground Indicator	No Shaft Grounding
Shaft Rotation	Reversible
Speed	3500 rpm
Speed Code	Single Speed
Starting Method	Direct on line
Thermal Device - Bearing	None
Thermal Device - Winding	Normally Closed Thermostat
Vibration Sensor Indicator	No Vibration Sensor

<b>Winding Thermal 1</b>	<b>None</b>
<b>Winding Thermal 2</b>	<b>None</b>
<b>XP Temp Code</b>	<b>T3C</b>

**Nameplate**

NP2033XPSLEV										
<b>NO.</b>		<b>CC</b>	010A							
<b>S/N</b>		<b>TEMP CODE</b>	T3C							
<b>SPEC.</b>	06-0000-0021		<b>INV.TYPE</b>	PWM						
<b>CAT.NO.</b>	CPX18526T		<b>C HP FR</b>	60	<b>C HP TO</b>	90				
<b>HP</b>	5//3		<b>CT HZ FROM</b>	6	<b>CT HZ TO</b>	60				
<b>VOLTS</b>	230/460//190/380		<b>VT HZ FROM</b>	6	<b>VT HZ TO</b>	60				
<b>AMPS</b>	11/5.5//8.4/4.2		<b>MAG CUR</b>	3/1.5						
<b>RPM</b>	3500//2900		<b>MX RPM</b>	5400						
<b>HZ</b>	60//50	<b>PH</b>	3	<b>CL</b>	F	<b>NOM.EFF.</b>	88.5			
<b>SER.F.</b>	1.00	<b>DES</b>	A	<b>SL HZ</b>	1.7	<b>WK2</b>	0.18			
<b>FRAME</b>	184T	<b>RATING</b>	40C AMB-CONT							
<b>BLANK</b>	55C AMB AT 1.00 SF SINEWAVE									
	NEMA MG-1 PART 5, IP55		1.15 SF SINEWAVE							

**AC Induction Motor Performance Data**

Record # 72833

Typical performance - not guaranteed values

<b>Winding:</b> 06WGW431-R028		<b>Type:</b> 0640M		<b>Enclosure:</b> XPFC		
<b>Nameplate Data</b>			<b>460 V, 60 Hz: High Voltage Connection</b>			
<b>Rated Output (HP)</b>	5//3		<b>Full Load Torque</b>	7.61 LB-FT		
<b>Volts</b>	230/460//190/380		<b>Start Configuration</b>	direct on line		
<b>Full Load Amps</b>	11/5.5//8.4/4.2		<b>Breakdown Torque</b>	35.64 LB-FT		
<b>R.P.M.</b>	3500//2900		<b>Pull-up Torque</b>	26.7 LB-FT		
<b>Hz</b>	60//50	<b>Phase</b>	3	<b>Locked-rotor Torque</b>	30.8 LB-FT	
<b>NEMA Design Code</b>	A		<b>KVA Code</b>	L	<b>Starting Current</b>	62.3 A
<b>Service Factor (S.F.)</b>	1			<b>No-load Current</b>	1.55 A	
<b>NEMA Nom. Eff.</b>	88.5	<b>Power Factor</b>	96	<b>Line-line Res. @ 25°C</b>	2.12 Ω	
<b>Rating - Duty</b>	40C AMB-CONT			<b>Temp. Rise @ Rated Load</b>	49°C	
				<b>Locked-rotor Power Factor</b>	43	
				<b>Rotor inertia</b>	0.179 LB-FT <sup>2</sup>	

**Load Characteristics 460 V, 60 Hz, 5 HP**

<b>% of Rated Load</b>	<b>25</b>	<b>50</b>	<b>75</b>	<b>100</b>	<b>125</b>	<b>150</b>
<b>Power Factor</b>	75	88	95	96	96	93
<b>Efficiency</b>	75.1	83.3	85.8	86.2	85.7	84.8
<b>Speed</b>	3562	3533	3503	3470	3435	3398
<b>Line amperes</b>	2.14	3.27	4.38	5.7	7.1	8.72

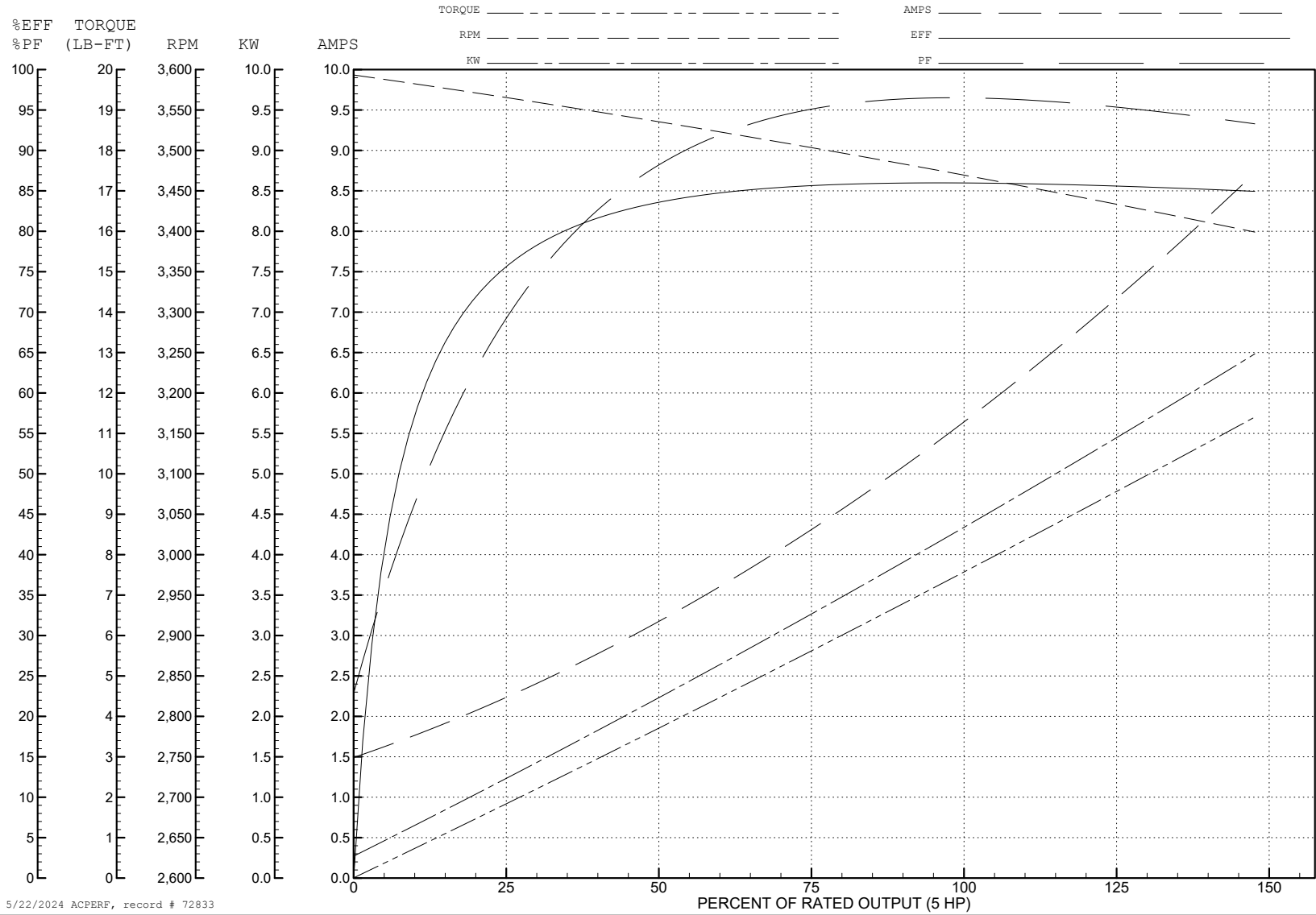
ABB Motors and Mechanical Inc.

WINDING # 06WGW431

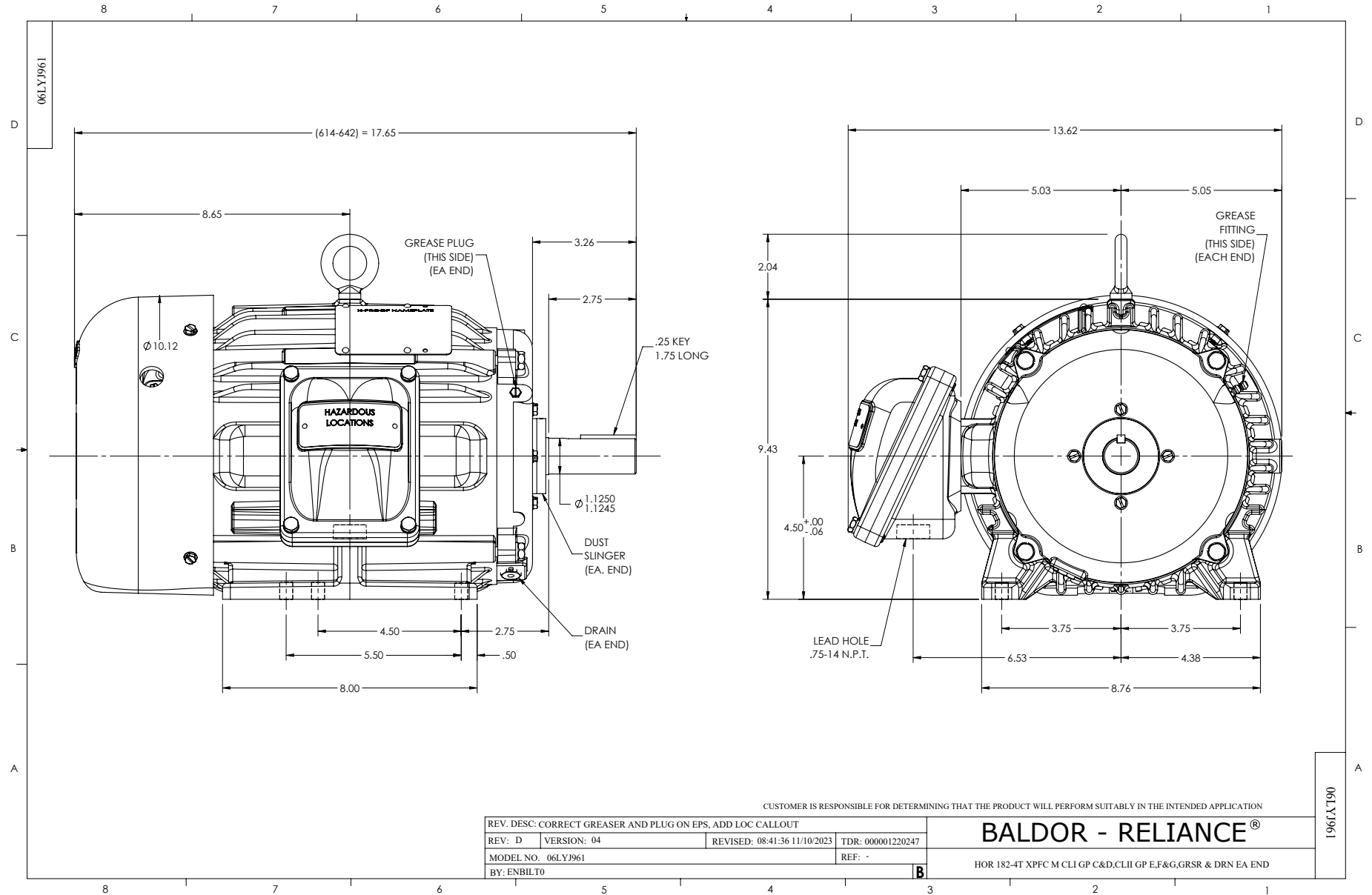
Typical performance - not guaranteed values.

5 HP 3 PH 60 HZ 3470 RPM 460 V 0640M

TORQUES (LB-FT): PO=35.64 PU=26.7 LR=30.8 LRA=62.3

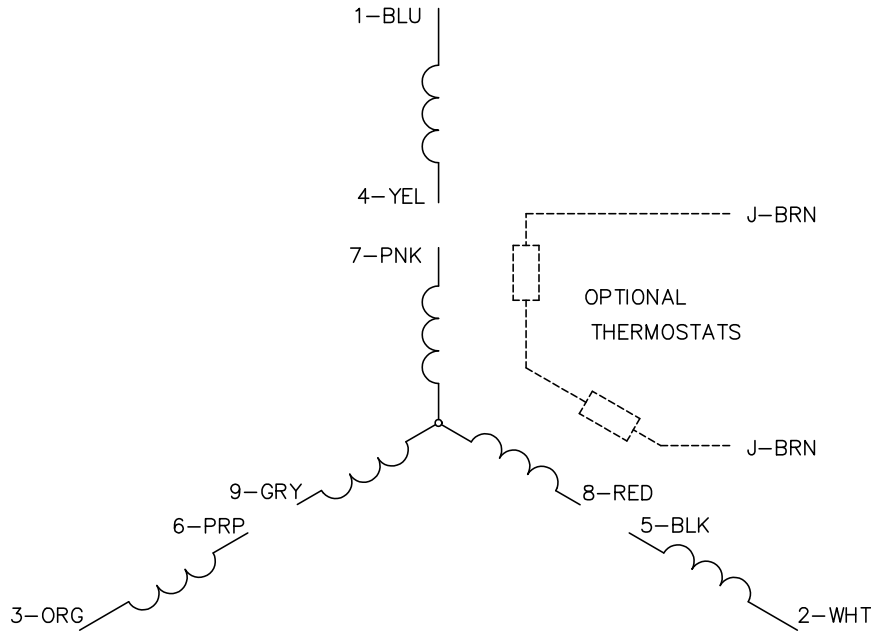


5/22/2024 ACPERF, record # 72833

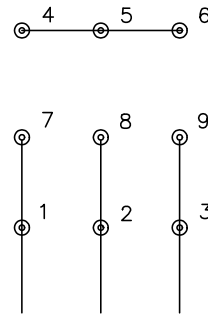




CD0005

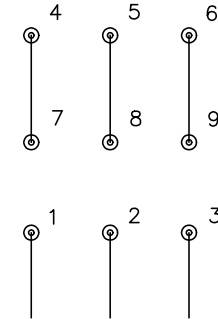


LOW VOLTAGE  
(2Y)



LINE

HIGH VOLTAGE  
(1Y)



LINE

**NOTES:**

1. INTERCHANGE ANY TWO LINE LEADS TO REVERSE ROTATION.
2. OPTIONAL THERMOSTATS ARE PROVIDED WHEN SPECIFIED.
3. ACTUAL NUMBER OF INTERNAL PARALLEL CIRCUITS MAY BE A MULTIPLE OF THOSE SHOWN ABOVE.
4. LEAD COLORS ARE OPTIONAL. LEADS MUST ALWAYS BE NUMBERED AS SHOWN.

CD0005

REV. DESC: REVISE TO SHOW OPTIONAL COLORS			
REV. LTR: E	BY: JLP	REVISED: 01/19/99 10:15	TDR: 0171435
S00000		FILE: AAA00005140	MDL: -
		MTL: -	

**BALDOR ELECTRIC Co.**

3PH, DV, 9 LEADS