

**BALDOR • RELIANCE**

---

# Customer information packet

## CPX18326T

3HP, 3470RPM, 3PH, 60HZ, 182T, XPFC, F1

Class - CLI GP C,D; CLII GP E,F,G

Division - Division I

## Specifications

Enclosure	XPFC
Frame	182T
Frame Material	Iron
Frequency	50.00 Hz 60.00 Hz
Motor Letter Type	Three Phase
Output @ Frequency	2.000 HP @ 50 HZ 3.000 HP @ 60 HZ
Phase	3
Synchronous Speed @ Frequency	3600 RPM @ 60 HZ
Voltage @ Frequency	380.0 V @ 50 HZ 230.0 V @ 60 HZ 190.0 V @ 50 HZ 460.0 V @ 60 HZ
XP Class and Group	CLI GP C,D; CLII GP E,F,G
XP Division	Division I
Agency Approvals	CSA UR CSA EEV
Ambient Temperature	40 °C
Auxillary Box	No Auxillary Box
Auxillary Box Lead Termination	None
Base Indicator	Rigid
Bearing Grease Type	Polyrex EM (-20F +300F)
Blower	None
Constant Torque Speed Range	6
Current @ Voltage	7.600 A @ 230.0 V 6.400 A @ 190.0 V 3.800 A @ 460.0 V 3.200 A @ 380.0 V
Design Code	B
Drip Cover	No Drip Cover

## Part detail

Revision	B
Type	AC
Mech. spec.	
Base	
Status	PRD/A
Elec. spec.	06WGY471
Layout	06LYJ961
Eff. date	08-15-2022
CD Diagram	CD0005
Poles	02
Leads	9#16
Proprietary	False
Created date	11-18-2019

<b>Duty Rating</b>	CONT
<b>Efficiency @ 100% Load</b>	86.5 %
<b>Electrically Isolated Bearing</b>	Not Electrically Isolated
<b>Enclosure Modification</b>	Severe Duty Features
<b>Feedback Device</b>	NO FEEDBACK
<b>Heater Indicator</b>	No Heater
<b>High Voltage Full Load Amps</b>	3.2 a
<b>Insulation Class</b>	F
<b>Inverter Code</b>	Inverter Duty
<b>KVA Code</b>	K
<b>Lifting Lugs</b>	Standard Lifting Lugs
<b>Locked Bearing Indicator</b>	No Locked Bearing
<b>Max Speed</b>	5400 rpm
<b>Motor Lead Termination</b>	Flying Leads
<b>Motor Standards</b>	NEMA
<b>Motor Type</b>	0618M
<b>Mounting Arrangement</b>	F1
<b>Number of Poles</b>	2
<b>Overall Length</b>	17.59 IN
<b>Power Factor</b>	89
<b>Product Family</b>	Super-E Chemical Processing
<b>Pulley Face Code</b>	Standard
<b>Rodent Screen</b>	None
<b>Service Factor</b>	1.00
<b>Shaft Diameter</b>	1.125 IN
<b>Shaft Ground Indicator</b>	No Shaft Grounding
<b>Shaft Rotation</b>	Reversible
<b>Speed</b>	3470 rpm
<b>Speed Code</b>	Single Speed
<b>Starting Method</b>	Direct on line
<b>Thermal Device - Bearing</b>	None
<b>Thermal Device - Winding</b>	Normally Closed Thermostat
<b>Vibration Sensor Indicator</b>	No Vibration Sensor
<b>Winding Thermal 1</b>	None

Winding Thermal 2

None

XP Temp Code

T3C

**Nameplate**

NP2033XPSLEV										
<b>NO.</b>		<b>CC</b>	010A							
<b>S/N</b>		<b>TEMP CODE</b>	T3C							
<b>SPEC.</b>	06-0000-0271		<b>INV.TYPE</b>	PWM						
<b>CAT.NO.</b>	CPX18326T		<b>C HP FR</b>	60	<b>C HP TO</b>	90				
<b>HP</b>	3//2		<b>CT HZ FROM</b>	6	<b>CT HZ TO</b>	60				
<b>VOLTS</b>	230/460//190/380		<b>VT HZ FROM</b>	6	<b>VT HZ TO</b>	60				
<b>AMPS</b>	7.6/3.8//6.4/3.2		<b>MAG CUR</b>	3/1.5						
<b>RPM</b>	3470//2870		<b>MX RPM</b>	5400						
<b>HZ</b>	60//50	<b>PH</b>	3	<b>CL</b>	F	<b>NOM.EFF.</b>	86.5			
<b>SER.F.</b>	1.00	<b>DES</b>	B	<b>SL HZ</b>	2	<b>WK2</b>	0.079			
<b>FRAME</b>	182T	<b>RATING</b>	40C AMB-CONT							
<b>BLANK</b>	55C AMB @ 1.0 SF									
	1.15 SF ON SINEWAVE					NEMA MG-1 PT 5,IP55				

**AC Induction Motor Performance Data**

Record # 66220

Typical performance - not guaranteed values

Winding: 06WGY471-R015		Type: 0618M	Enclosure: XPFC	
<b>Nameplate Data</b>			<b>460 V, 60 Hz: High Voltage Connection</b>	
Rated Output (HP)	3	Full Load Torque	4.51 LB-FT	
Volts	230/460	Start Configuration	direct on line	
Full Load Amps	7.6/3.8	Breakdown Torque	25.5 LB-FT	
R.P.M.	3470	Pull-up Torque	9.08 LB-FT	
Hz	60 Phase	Locked-rotor Torque	11.9 LB-FT	
NEMA Design Code	B KVA Code	Starting Current	29.3 A	
Service Factor (S.F.)	1	No-load Current	1.64 A	
NEMA Nom. Eff.	86.5 Power Factor	Line-line Res. @ 25°C	6.24 Ω	
Rating - Duty	40C AMB-CONT	Temp. Rise @ Rated Load	45°C	
		Locked-rotor Power Factor	59.2	
		Rotor inertia	0.0795 LB-FT <sup>2</sup>	

**Load Characteristics 460 V, 60 Hz, 3 HP**

% of Rated Load	25	50	75	100	125	150
Power Factor	47	70	81	87	90	91
Efficiency	81.1	86.6	87.4	86.6	85.2	83.1
Speed	3568	3538	3505	3468	3430	3382
Line amperes	1.82	2.29	2.94	3.71	4.53	5.5

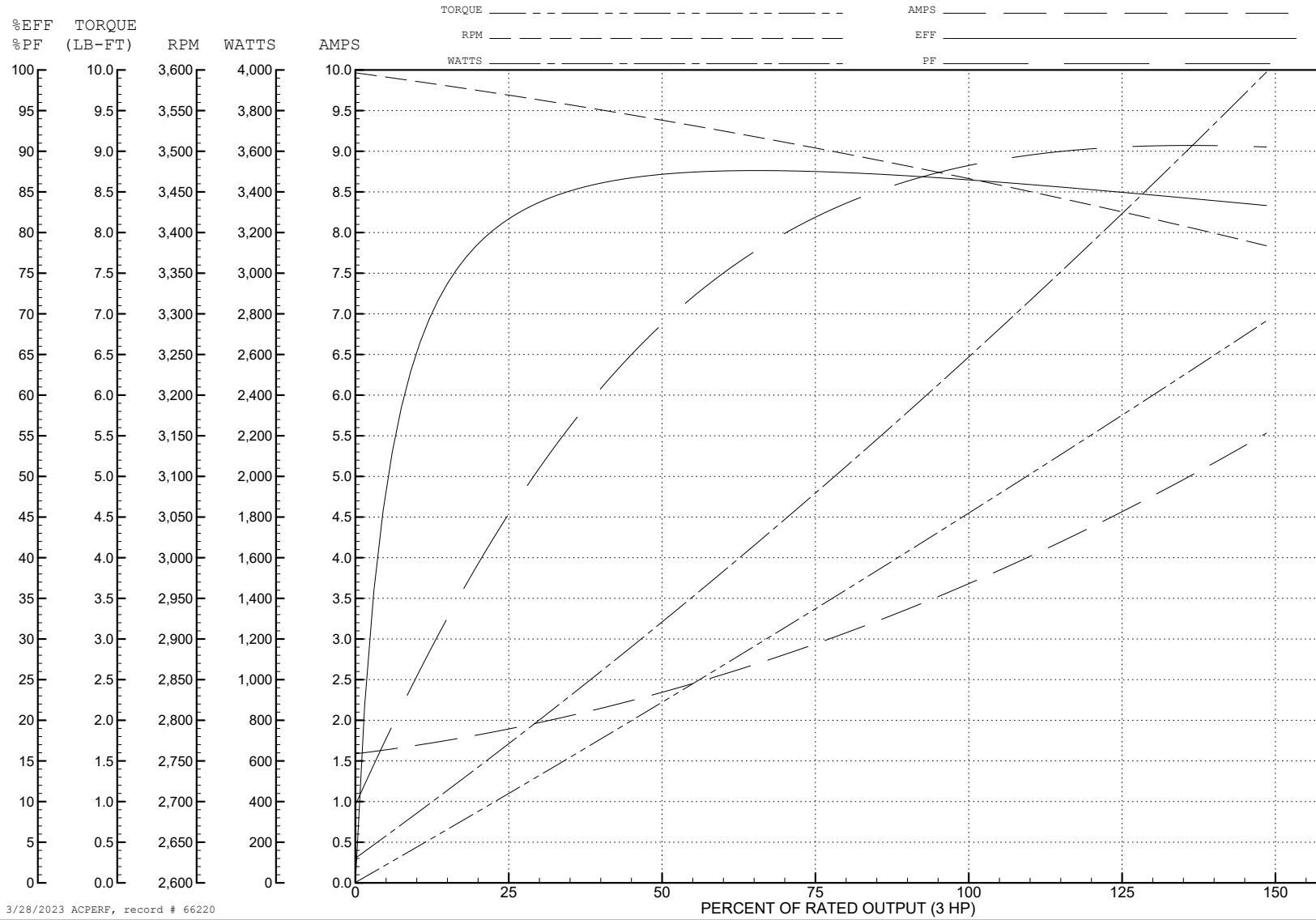
ABB Motors and Mechanical Inc.

WINDING # 06WGY471

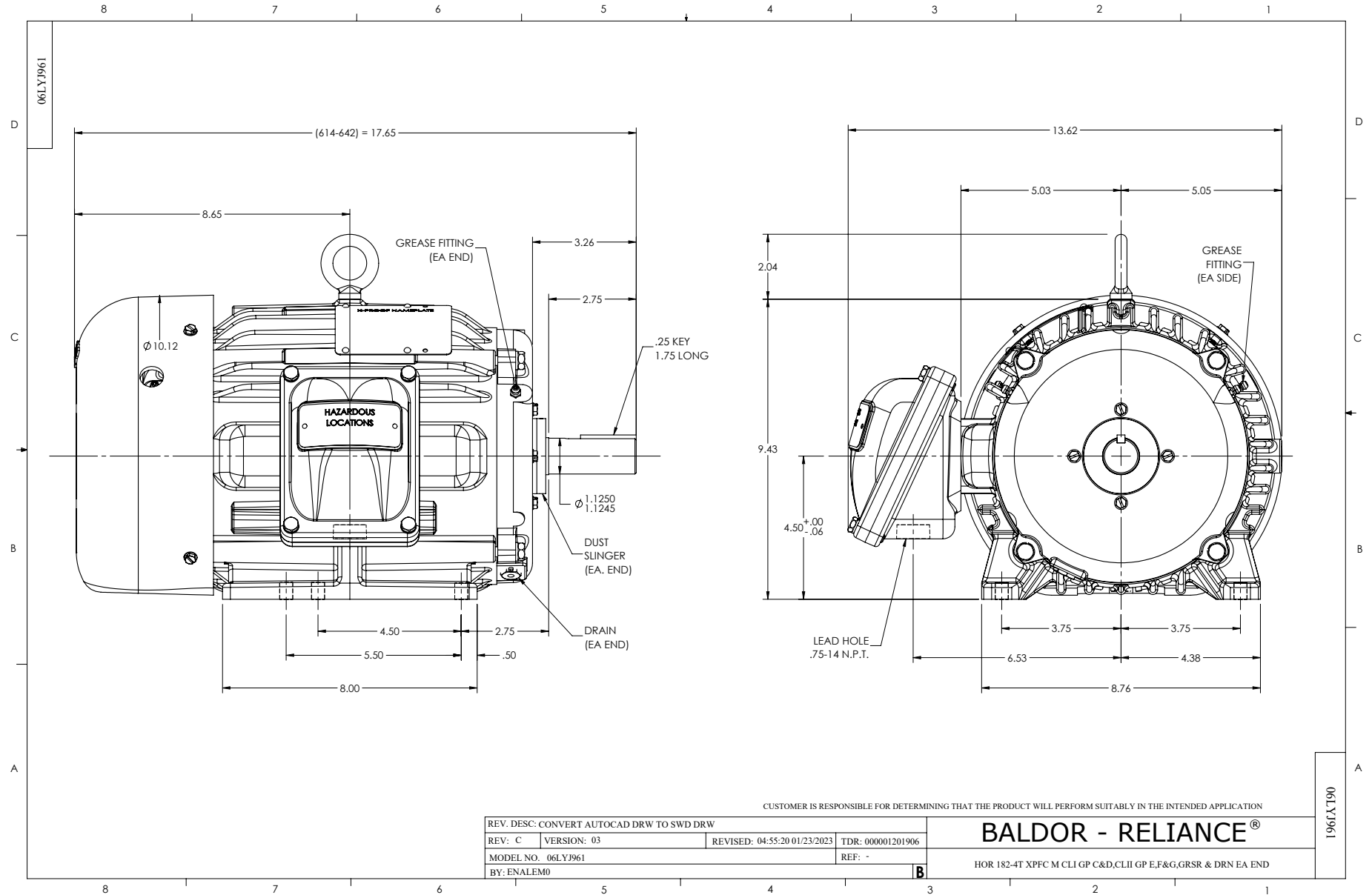
3 HP 3 PH 60 HZ 3470 RPM 460 V 0618M

Typical performance - not guaranteed values.

TORQUES (LB-FT): PO=25.5 PU=9.08 LR=11.9 LRA=29.3



3/28/2023 ACPERF, record # 66220





CD0005



LOW VOLTAGE  
(2Y)



LINE

HIGH VOLTAGE  
(1Y)



LINE

**NOTES:**

1. INTERCHANGE ANY TWO LINE LEADS TO REVERSE ROTATION.
2. OPTIONAL THERMOSTATS ARE PROVIDED WHEN SPECIFIED.
3. ACTUAL NUMBER OF INTERNAL PARALLEL CIRCUITS MAY BE A MULTIPLE OF THOSE SHOWN ABOVE.
4. LEAD COLORS ARE OPTIONAL. LEADS MUST ALWAYS BE NUMBERED AS SHOWN.

CD0005

REV. DESC: REVISE TO SHOW OPTIONAL COLORS			
REV. LTR: E	BY: JLP	REVISED: 01/19/99 10:15	TDR: 0171435
S00000		FILE: AAA00005140	MDL: -
		MTL: -	

**BALDOR ELECTRIC Co.**

3PH, DV, 9 LEADS