



Customer information packet

CNM3542

.75HP, 1765RPM, 3PH, 60HZ, 56C, 3514M, TENV, F1

Class - None

Division - Not Applicable

Specifications

Enclosure	TENV
Frame	56C
Frame Material	Steel
Frequency	60.00 Hz
Haz Area Class and Group	None
Haz Area Division	Not Applicable
Motor Letter Type	Three Phase
Output @ Frequency	.750 HP @ 60 HZ
Phase	3
Synchronous Speed @ Frequency	1800 RPM @ 60 HZ
Voltage @ Frequency	230.0 V @ 60 HZ 460.0 V @ 60 HZ
Agency Approvals	CSA UR
Ambient Temperature	40 °C
Auxillary Box	No Auxillary Box
Auxillary Box Lead Termination	None
Base Indicator	Rigid
Bearing Grease Type	Polyrex EM (-20F +300F)
Blower	None
Current @ Voltage	1.210 A @ 460.0 V 2.420 A @ 208.0 V 2.420 A @ 230.0 V
Design Code	B
Drip Cover	No Drip Cover
Duty Rating	CONT
Efficiency @ 100% Load	82.5 %
Electrically Isolated Bearing	Not Electrically Isolated
Feedback Device	NO FEEDBACK
Front Shaft Indicator	None
Heater Indicator	No Heater
High Voltage Full Load Amps	1.2 a

Part detail

Revision	F
Type	AC
Mech. spec.	35E012
Base	
Status	PRD/A
Elec. spec.	35WGG069
Layout	35LYE012
Eff. date	05-07-2024
CD Diagram	CD0005
Poles	04
Leads	9#18
Proprietary	False
Created date	01-10-2022

Insulation Class	F
Inverter Code	Inverter Duty
KVA Code	K
Lifting Lugs	No Lifting Lugs
Locked Bearing Indicator	Locked Bearing
Motor Lead Quantity/Wire Size	9 @ 18 AWG
Motor Lead Termination	Flying Leads
Motor Standards	NEMA
Motor Type	3514M
Mounting Arrangement	F1
Number of Poles	4
Overall Length	11.06 IN
Power Factor	74
Product Family	General Purpose
Pulley End Bearing Type	Ball
Pulley Face Code	C-Face
Pulley Shaft Indicator	Standard
Rodent Screen	None
Service Factor	1.15
Shaft Diameter	0.625 IN
Shaft Ground Indicator	No Shaft Grounding
Shaft Rotation	Reversible
Shaft Slinger Indicator	No Slinger
Speed	1765 rpm
Speed Code	Single Speed
Starting Method	Direct on line
Thermal Device - Bearing	None
Thermal Device - Winding	None
Vibration Sensor Indicator	No Vibration Sensor
Winding Thermal 1	None
Winding Thermal 2	None

Nameplate

NP1256L									
CAT.NO.	CNM3542								
SPEC.	35E012G069G1								
HP	.75								
VOLTS	230/460								
AMP	2.42/1.21								
RPM	1765								
FRAME	56C		HZ	60		PH	3		
SER.F.	1.15	CODE	K	DES	B	CLASS	F		
NEMA-NOM-EFF	82.5	PF	74						
RATING	40C AMB-CONT								
CC									
DE	6205		ODE	6203					
ENCL	TENV	SN							
	SFA 2.52/1.26								

AC Induction Motor Performance Data

Record # 87326

Typical performance - not guaranteed values

Winding: 35WGG069-R011		Type: 3514M	Enclosure: TENV	
Nameplate Data			460 V, 60 Hz: High Voltage Connection	
Rated Output (HP)	.75	Full Load Torque	2.24 LB-FT	
Volts	230/460	Start Configuration	direct on line	
Full Load Amps	2.42/1.21	Breakdown Torque	8 LB-FT	
R.P.M.	1765	Pull-up Torque	4.4 LB-FT	
Hz	60 Phase	3	Locked-rotor Torque	5.1 LB-FT
NEMA Design Code	B KVA Code	K	Starting Current	8.4 A
Service Factor (S.F.)	1.15	No-load Current	0.85 A	
NEMA Nom. Eff.	82.5 Power Factor	74	Line-line Res. @ 25°C	30.3 Ω
Rating - Duty	40C AMB-CONT	Temp. Rise @ Rated Load	59°C	
S.F. Amps	2.64/1.32	Temp. Rise @ S.F. Load	69°C	
		Locked-rotor Power Factor	66.8	
		Rotor inertia	0.101 lb-ft ²	

Load Characteristics 460 V, 60 Hz, 0.75 HP

% of Rated Load	25	50	75	100	125	150	S.F.
Power Factor	30	48	61	70	77	81	78
Efficiency	68.4	79.2	82.1	82.9	82.4	81.1	83.1
Speed	1791	1783	1775	1766	1757	1745	1757
Line amperes	0.87	0.95	1.06	1.21	1.4	1.61	1.26

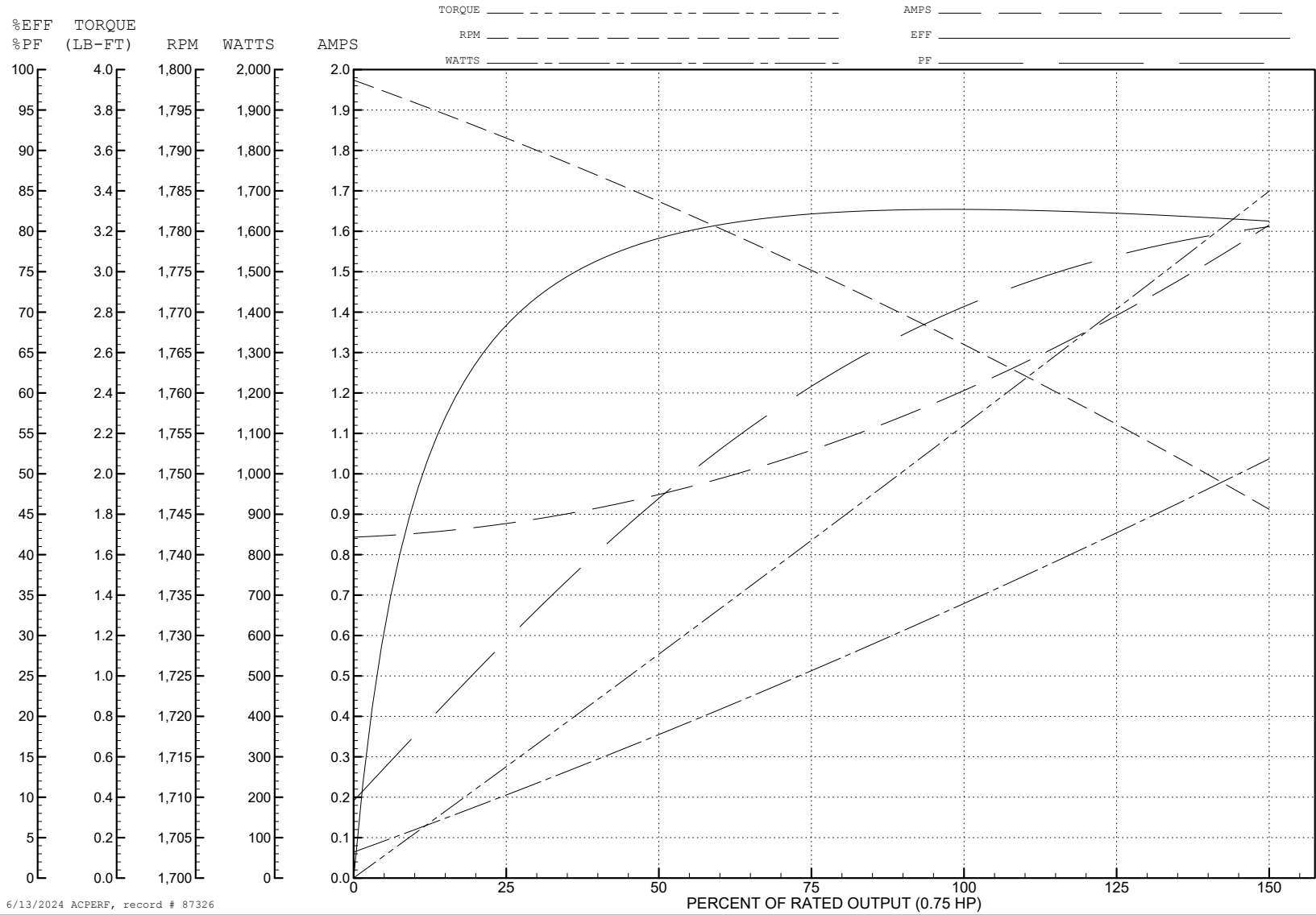
ABB Motors and Mechanical Inc.

WINDING # 35WGG069

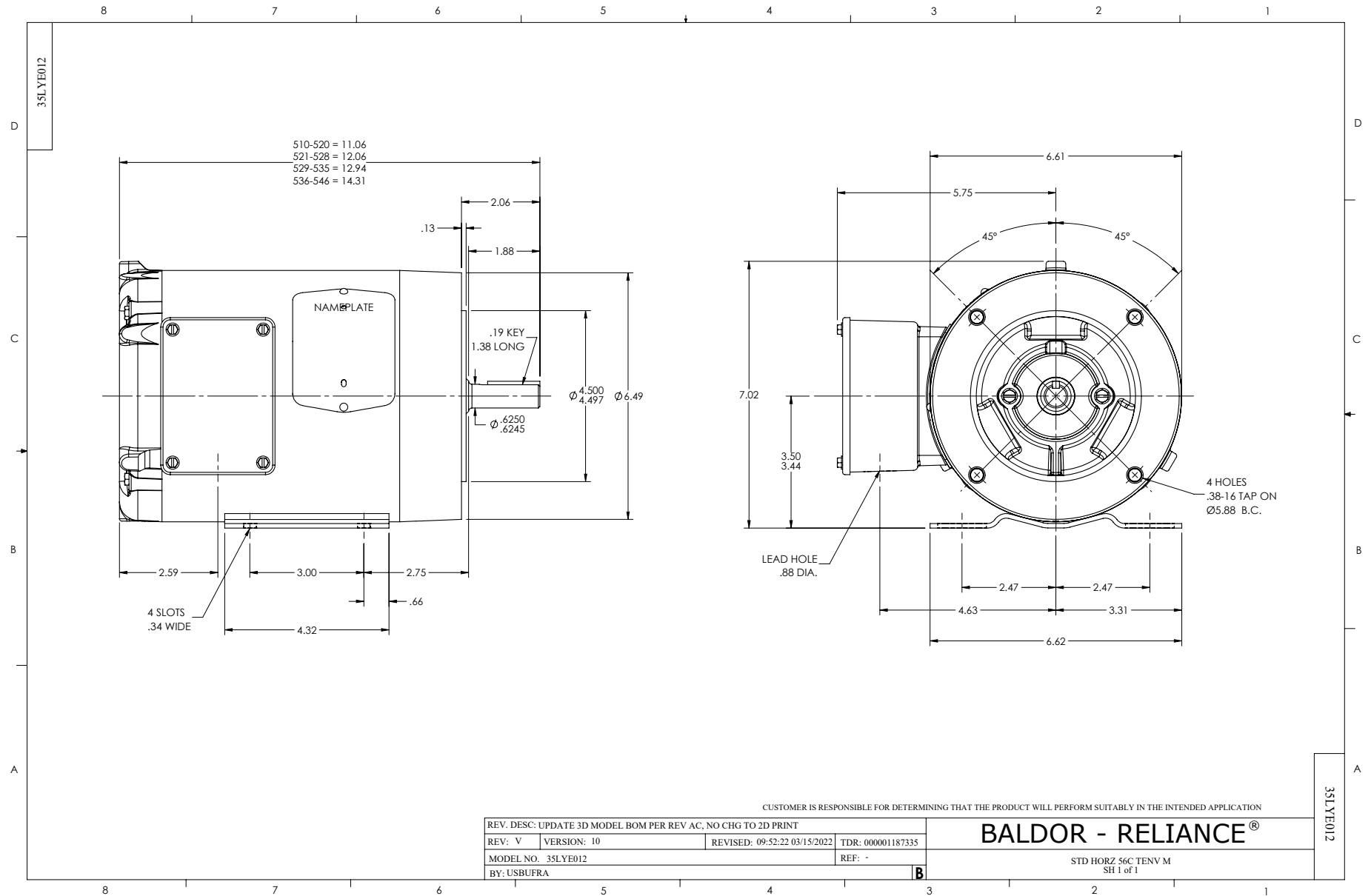
0.75 HP 3 PH 60 HZ 1765 RPM 460 V 3514M

Typical performance - not guaranteed values.

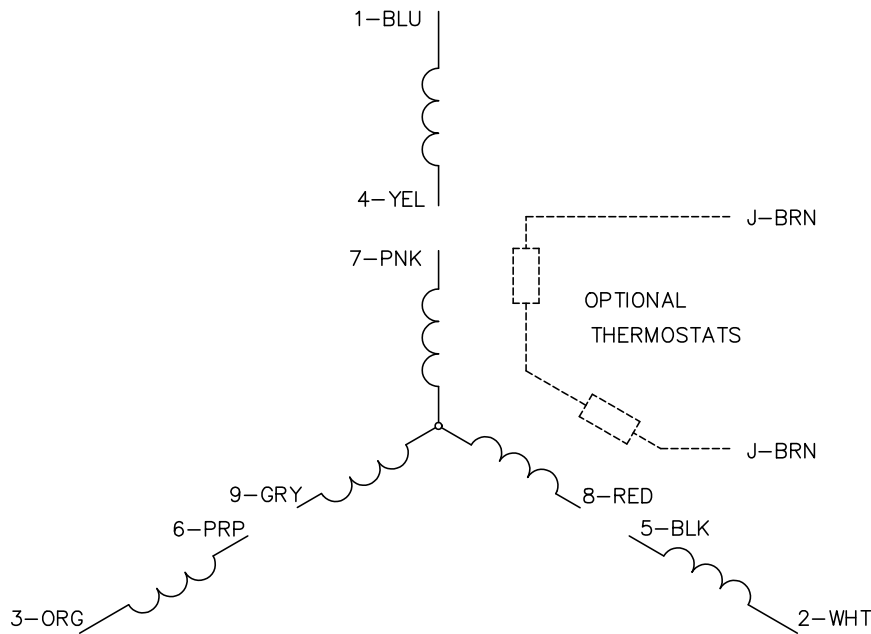
TORQUES (LB-FT) : PO=8 PU=4.4 LR=5.1 LRA=8.4



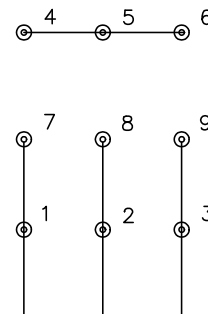
6/13/2024 ACPERF, record # 87326



CD0005

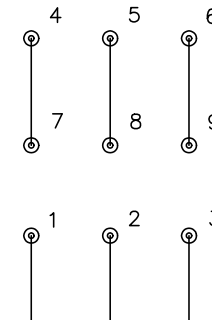


LOW VOLTAGE
(2Y)



LINE

HIGH VOLTAGE
(1Y)



LINE

NOTES:

1. INTERCHANGE ANY TWO LINE LEADS TO REVERSE ROTATION.
2. OPTIONAL THERMOSTATS ARE PROVIDED WHEN SPECIFIED.
3. ACTUAL NUMBER OF INTERNAL PARALLEL CIRCUITS MAY BE A MULTIPLE OF THOSE SHOWN ABOVE.
4. LEAD COLORS ARE OPTIONAL. LEADS MUST ALWAYS BE NUMBERED AS SHOWN.

CD0005

REV. DESC: REVISE TO SHOW OPTIONAL COLORS			
REV. LTR: E	BY: JLP	REVISED: 01/19/99 10:15	TDR: 0171435
S00000		FILE: AAA00005140	MDL: -
		MTL: -	

BALDOR ELECTRIC Co.

3PH, DV, 9 LEADS