

ABB BALDOR RELIANCE III

Customer information packet

CM7006-I

.5//.33HP, 1740//1450RPM, 3PH, 60//50HZ, 56C

Class - CLI GP C,D

Division - Division I

Specifications

Enclosure	XPNV
Frame	56C
Frame Material	Steel
Frequency	50.00 Hz 60.00 Hz
Haz Area Class and Group	CLI GP C,D
Haz Area Division	Division I
Motor Letter Type	Three Phase
Output @ Frequency	.330 HP @ 50 HZ .500 HP @ 60 HZ
Phase	3
Synchronous Speed @ Frequency	1800 RPM @ 60 HZ
Voltage @ Frequency	460.0 V @ 60 HZ 380.0 V @ 50 HZ 230.0 V @ 60 HZ 190.0 V @ 50 HZ
Agency Approvals	CSA UL
Ambient Temperature	40 °C
Auxiliary Box	NO AUXILLARY BOX
Auxiliary Box Lead Termination	None
Base Indicator	Rigid
Bearing Grease Type	Polyrex EM (-20F +300F)
Blower	None
Current @ Voltage	1.900 A @ 208.0 V 1.800 A @ 230.0 V 1.740 A @ 190.0 V .900 A @ 460.0 V .870 A @ 380.0 V
Design Code	B
Drip Cover	No Drip Cover
Duty Rating	CONT

Part Detail

Revision	C
Type	AC
Mech. spec.	35X724
Base	
Status	PRD/A
Elec. spec.	35WGG155
Layout	35LYX724
Eff. date	04-16-2024
CD Diagram	CD0005
Poles	04
Leads	9#18
Proprietary	False
Created date	01-10-2022

Efficiency @ 100% Load	80.0 %
Electrically Isolated Bearing	Not Electrically Isolated
Feedback Device	NO FEEDBACK
Front Shaft Indicator	None
Haz Area Temp Code	T3C
Heater Indicator	No Heater
High Voltage Full Load Amps	0.9 a
Insulation Class	F
Inverter Code	Not Inverter
KVA Code	M
Lifting Lugs	No Lifting Lugs
Locked Bearing Indicator	Locked Bearing
Motor Lead Quantity/Wire Size	9 @ 18 AWG
Motor Lead Termination	Flying Leads
Motor Standards	NEMA
Motor Type	X3512M
Mounting Arrangement	F1
Number of Poles	4
Overall Length	13.14 IN
Power Factor	65
Product Family	Hazardous Location Motor
Pulley End Bearing Type	Ball
Pulley Face Code	C-Face
Pulley Shaft Indicator	Standard
Rodent Screen	None
Service Factor	1.15
Shaft Diameter	0.625 IN
Shaft Ground Indicator	No Shaft Grounding
Shaft Rotation	Reversible
Shaft Slinger Indicator	No Slinger
Speed	1475 rpm 1770 rpm
Speed Code	Single Speed
Starting Method	Direct on line

Thermal Device - Bearing	None
Thermal Device - Winding	Normally Closed Thermostat
Vibration Sensor Indicator	No Vibration Sensor
Winding Thermal 1	None
Winding Thermal 2	None

Nameplate

NP0977XPSL										
NO.								CC		
SER.								TEMP CODE	T3C	
SPEC.	35X724G155G1									
CAT.NO.										
HP	.5//.33									
VOLTS	230/460//190/380									
AMPS	1.8/.9//1.74/.87									
RPM	1770//1475				MOTOR WEIGHT		37			
HERTZ	60//50	PH	3	CL	F	DE BRG	6205			
SER.F.	1.15	DES	B	CODE	M	ODE BRG	6203			
FRAME	56C	GREASE	POLYREX EM							
RATING	40C AMB-CONT									
		NEMA-NOM-EFF		80	PF	65				
	SFA 2/1									

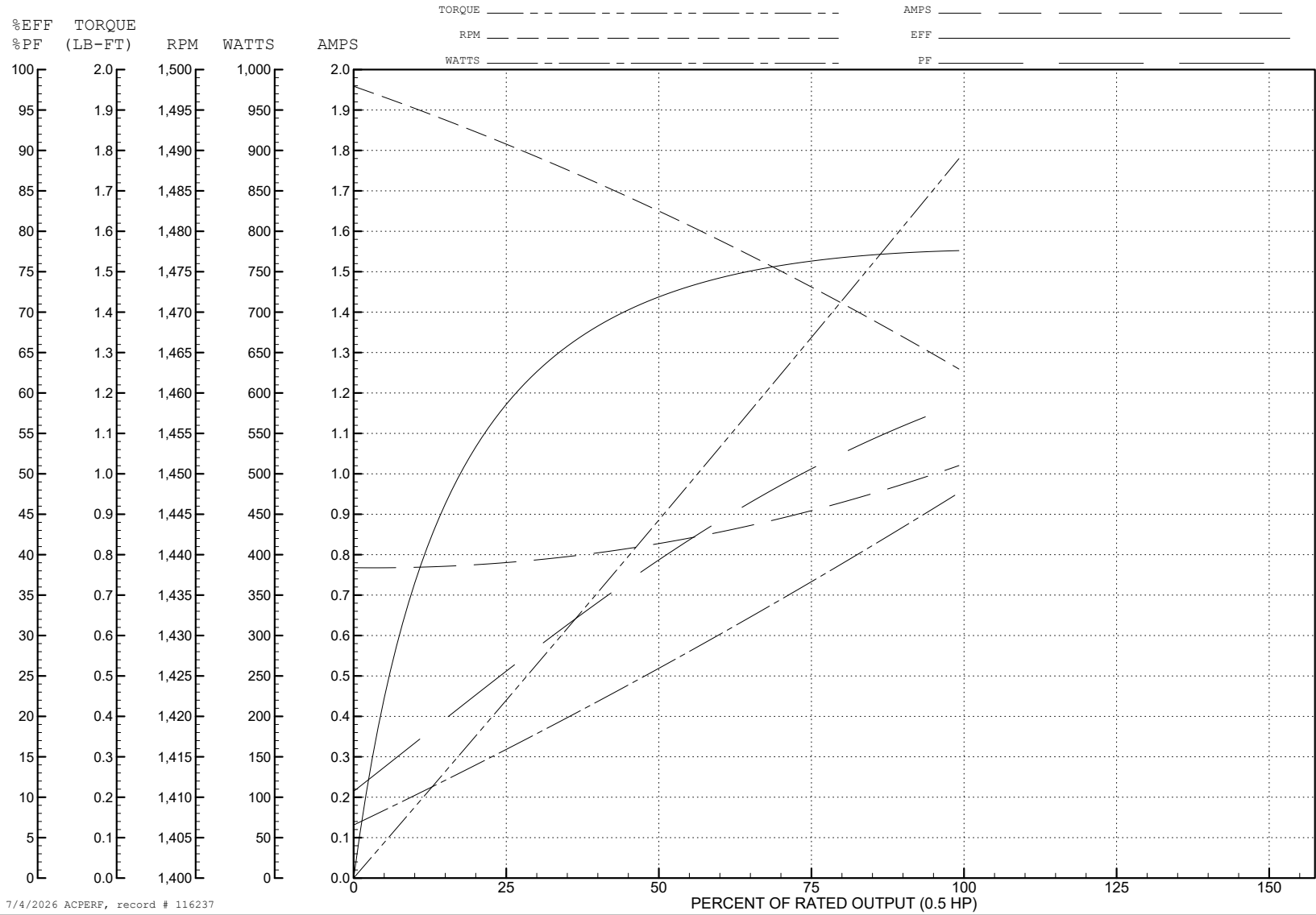
ABB Motors and Mechanical Inc.

WINDING # 35WGG155

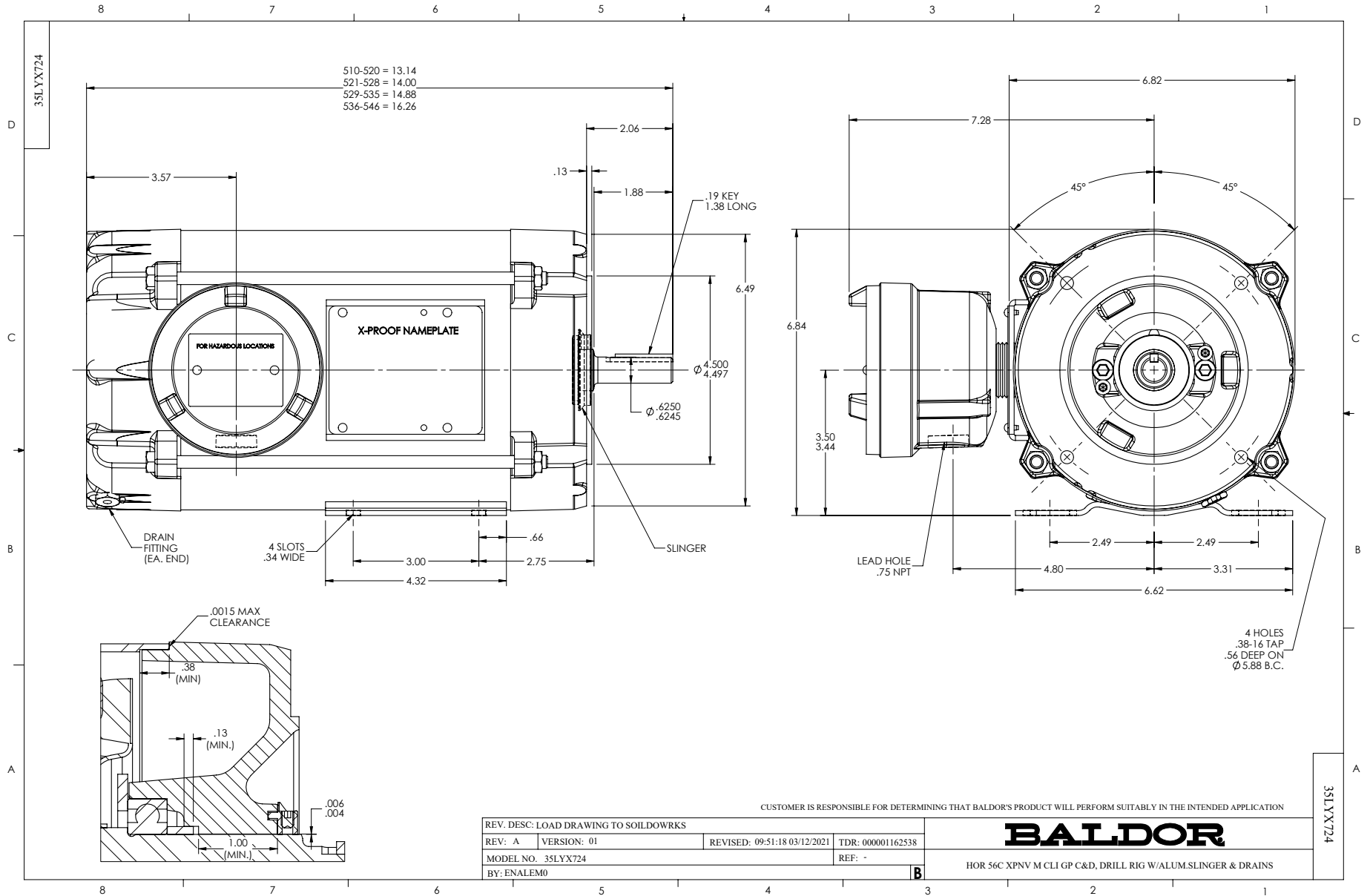
0.5 HP 3 PH 60 HZ 1476 RPM 460 V 3512M

Typical performance - not guaranteed values.

TORQUES (LB-FT): PO=5.5 PU=3 LR=3.7 LRA=6.1



7/4/2026 ACPERF, record # 116237



CD0005



LOW VOLTAGE
(2Y)



LINE

HIGH VOLTAGE
(1Y)



LINE

NOTES:

1. INTERCHANGE ANY TWO LINE LEADS TO REVERSE ROTATION.
2. OPTIONAL THERMOSTATS ARE PROVIDED WHEN SPECIFIED.
3. ACTUAL NUMBER OF INTERNAL PARALLEL CIRCUITS MAY BE A MULTIPLE OF THOSE SHOWN ABOVE.
4. LEAD COLORS ARE OPTIONAL. LEADS MUST ALWAYS BE NUMBERED AS SHOWN.

CD0005

REV. DESC: REVISE TO SHOW OPTIONAL COLORS

REV. LTR: E BY: JLP REVISED: 01/19/99 10:15 TDR: 0171435

500000

FILE: AAA00005140

MDL: -

MTL: -

BALDOR ELECTRIC Co.

3PH, DV, 9 LEADS