

# ABB BALDOR RELIANCE III

---

## Customer information packet

### CL3612TM

5HP, 1725RPM, 1PH, 60HZ, 184TC, 3646LC, TEFC

Class - None

Division - Not Applicable

**Specifications**

<b>Enclosure</b>	TEFC
<b>Frame</b>	184TC
<b>Frame Material</b>	Steel
<b>Frequency</b>	60.00 Hz
<b>Haz Area Class and Group</b>	None
<b>Haz Area Division</b>	Not Applicable
<b>Motor Letter Type</b>	Cap Start, Cap Run
<b>Output @ Frequency</b>	5.000 HP @ 60 HZ
<b>Phase</b>	1
<b>Synchronous Speed @ Frequency</b>	1800 RPM @ 60 HZ
<b>Voltage @ Frequency</b>	208.0 V @ 60 HZ 230.0 V @ 60 HZ
<b>Agency Approvals</b>	CE C UR US WEEE
<b>Ambient Temperature</b>	40 °C
<b>Auxiliary Box</b>	NO AUXILLARY BOX
<b>Auxiliary Box Lead Termination</b>	None
<b>Base Indicator</b>	Rigid
<b>Bearing Grease Type</b>	Polyrex EM (-20F +300F)
<b>Blower</b>	None
<b>Current @ Voltage</b>	23.000 A @ 230.0 V 23.600 A @ 208.0 V
<b>Design Code</b>	L
<b>Drip Cover</b>	No Drip Cover
<b>Duty Rating</b>	CONT
<b>Efficiency @ 100% Load</b>	80.0 %
<b>Electrically Isolated Bearing</b>	Not Electrically Isolated
<b>Feedback Device</b>	NO FEEDBACK
<b>Front Face Code</b>	Standard
<b>Front Shaft Indicator</b>	None
<b>Heater Indicator</b>	No Heater

**Part Detail**

<b>Revision</b>	AY
<b>Type</b>	AC
<b>Mech. spec.</b>	36F189
<b>Base</b>	
<b>Status</b>	PRD/A
<b>Elec. spec.</b>	36WGW279
<b>Layout</b>	36LYF189
<b>Eff. date</b>	06-05-2025
<b>CD Diagram</b>	CD0152
<b>Poles</b>	04
<b>Leads</b>	2#10 A PH,3#16 B&J
<b>Proprietary</b>	False
<b>Created date</b>	01-01-0001

<b>High Voltage Full Load Amps</b>	23.0 a
<b>Insulation Class</b>	F
<b>Inverter Code</b>	Not Inverter
<b>KVA Code</b>	J
<b>Lifting Lugs</b>	No Lifting Lugs
<b>Locked Bearing Indicator</b>	Locked Bearing
<b>Motor Lead Exit</b>	Ko Box
<b>Motor Lead Quantity/Wire Size</b>	2 @ 10 AWG, A PH
<b>Motor Lead Termination</b>	Flying Leads
<b>Motor Standards</b>	NEMA
<b>Motor Type</b>	3646LC
<b>Mounting Arrangement</b>	F1
<b>Number of Poles</b>	4
<b>Overall Length</b>	18.05 IN
<b>Power Factor</b>	88
<b>Product Family</b>	General Purpose
<b>Pulley End Bearing Type</b>	Ball
<b>Pulley Face Code</b>	C-Face
<b>Pulley Shaft Indicator</b>	Standard
<b>Rodent Screen</b>	None
<b>RoHS Status</b>	ROHS COMPLIANT
<b>Service Factor</b>	1.00
<b>Shaft Diameter</b>	1.125 IN
<b>Shaft Extension Location</b>	Pulley End
<b>Shaft Ground Indicator</b>	No Shaft Grounding
<b>Shaft Rotation</b>	Reversible
<b>Shaft Slinger Indicator</b>	No Slinger
<b>Speed</b>	1725 rpm
<b>Speed Code</b>	Single Speed
<b>Starting Method</b>	Direct on line
<b>Thermal Device - Bearing</b>	None
<b>Thermal Device - Winding</b>	Do Not Use
<b>Vibration Sensor Indicator</b>	No Vibration Sensor
<b>Winding Thermal 1</b>	Manual Thermal Overload

**Winding Thermal 1 Location**

**KO**

**Winding Thermal 2**

**None**

---

**Nameplate**

<b>NP1257L</b>									
<b>CAT.NO.</b>	CL3612TM								
<b>SPEC.</b>	36F189W279								
<b>HP</b>	5								
<b>VOLTS</b>	208-230								
<b>AMP</b>	23.6-23								
<b>RPM</b>	1725								
<b>FRAME</b>	184TC		<b>HZ</b>	60		<b>PH</b>	1		
<b>SER.F.</b>	1.00	<b>CODE</b>	J	<b>DES</b>	L	<b>CL</b>	F		
<b>NEMA-NOM-EFF</b>	80	<b>PF</b>	88						
<b>RATING</b>	40C AMB-CONT								
<b>CC</b>									
<b>DE</b>	6206	<b>ODE</b>	6205						
<b>ENCL</b>	TEFC	<b>SN</b>							

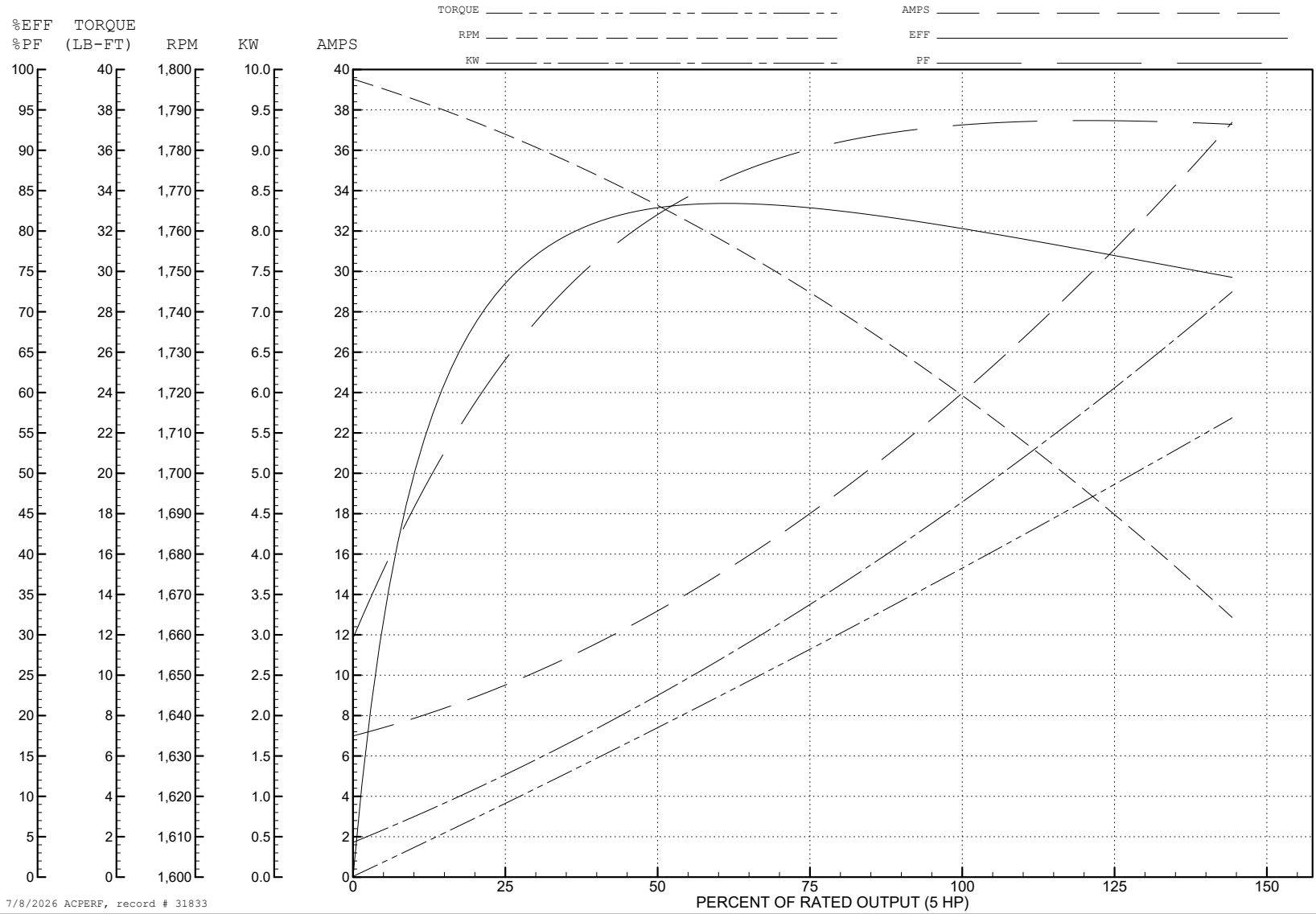
ABB Motors and Mechanical Inc.

WINDING # 36WGW279

Typical performance - not guaranteed values.

5 HP 1 PH 60 HZ 1725 RPM 208 V 3646LC

TORQUES (LB-FT): PO=34.5 PU=29.6 LR=37.9 LRA=146



7/8/2026 ACPERF, record # 31833

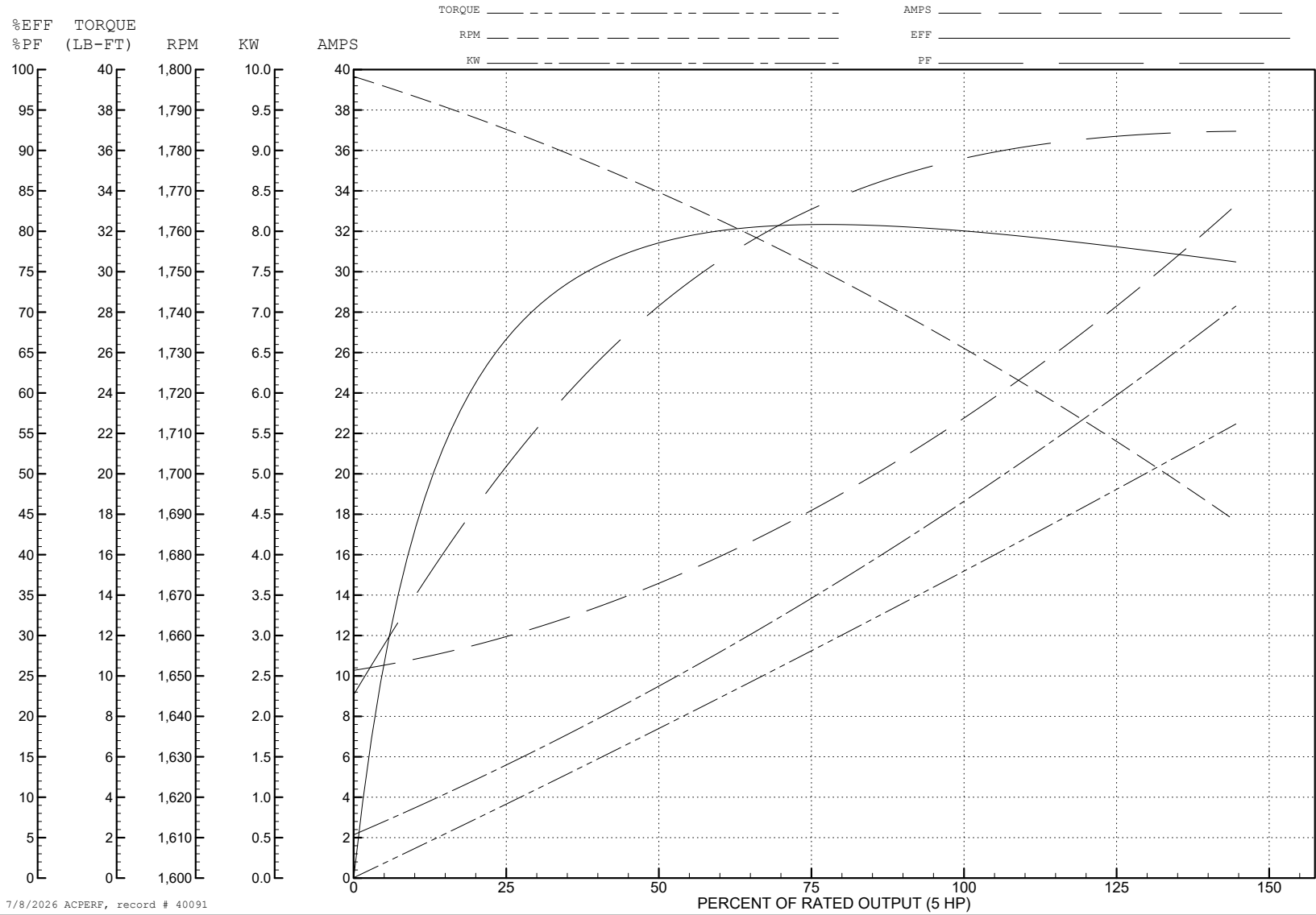
ABB Motors and Mechanical Inc.

WINDING # 36WG279

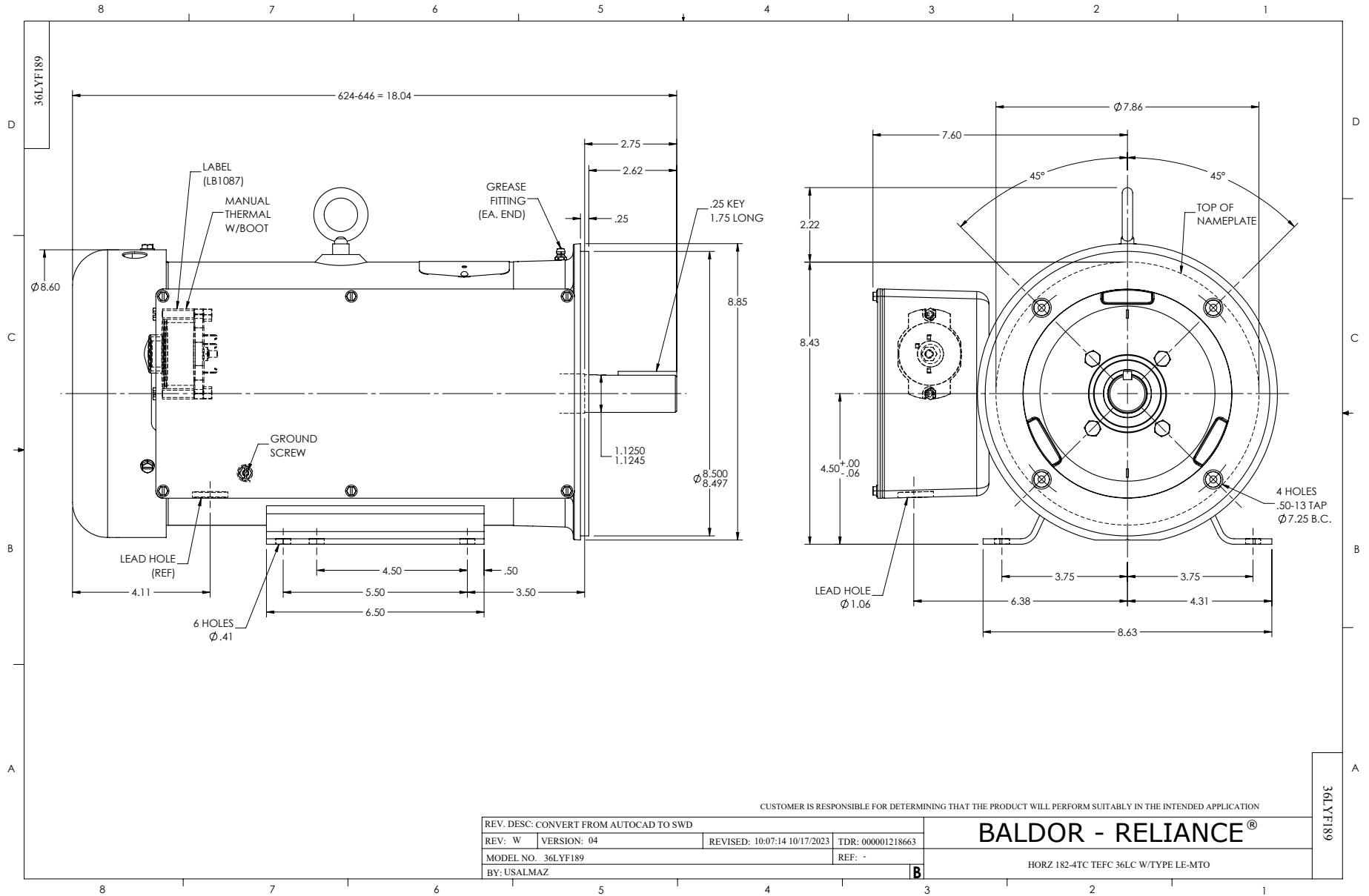
Typical performance - not guaranteed values.

5 HP 1 PH 60 HZ 1725 RPM 230 V 3646LC

TORQUES (LB-FT): PO=43 PU=36 LR=46 LRA=163



7/8/2026 ACPERF, record # 40091



CUSTOMER IS RESPONSIBLE FOR DETERMINING THAT THE PRODUCT WILL PERFORM SUITABLY IN THE INTENDED APPLICATION

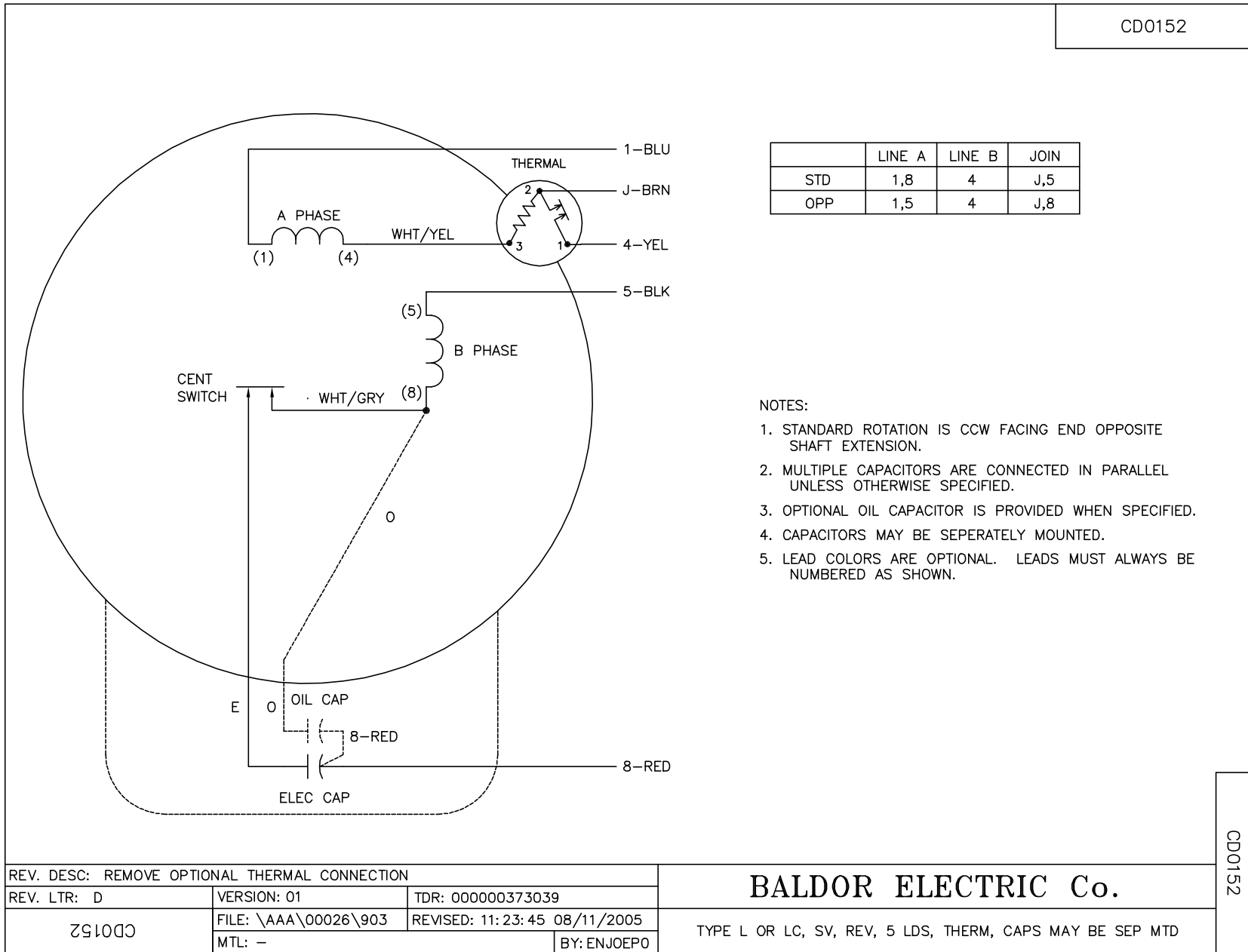
REV. DESC: CONVERT FROM AUTOCAD TO SWD			
REV: W	VERSION: 04	REVISED: 10/07/14 10/17/2023	TDR: 000001218663
MODEL NO. 36LYF189		REF: -	
BY: USALMAZ			

**BALDOR - RELIANCE®**

HORZ 182-4TC TEFC 36LC W/TYPE LE-MTO

36LYF189

CD0152



	LINE A	LINE B	JOIN
STD	1,8	4	J,5
OPP	1,5	4	J,8

**NOTES:**

1. STANDARD ROTATION IS CCW FACING END OPPOSITE SHAFT EXTENSION.
2. MULTIPLE CAPACITORS ARE CONNECTED IN PARALLEL UNLESS OTHERWISE SPECIFIED.
3. OPTIONAL OIL CAPACITOR IS PROVIDED WHEN SPECIFIED.
4. CAPACITORS MAY BE SEPERATELY MOUNTED.
5. LEAD COLORS ARE OPTIONAL. LEADS MUST ALWAYS BE NUMBERED AS SHOWN.

REV. DESC: REMOVE OPTIONAL THERMAL CONNECTION		
REV. LTR: D	VERSION: 01	TDR: 000000373039
CD0152	FILE: \AAA\00026\903	REVISED: 11: 23: 45 08/11/2005
	MTL: -	BY: ENJOEPO

**BALDOR ELECTRIC Co.**

TYPE L OR LC, SV, REV, 5 LDS, THERM, CAPS MAY BE SEP MTD

CD0152