



Customer information packet

CL3516TM

2HP, 1740RPM, 1PH, 60HZ, 145TC, 3535LC, TEFC, F

Class - None

Division - Not Applicable

Specifications

Enclosure	TEFC
Frame	145TC
Frame Material	Steel
Frequency	60.00 Hz
Haz Area Class and Group	None
Haz Area Division	Not Applicable
Motor Letter Type	Cap Start, Cap Run
Output @ Frequency	2.000 HP @ 60 HZ
Phase	1
Synchronous Speed @ Frequency	1800 RPM @ 60 HZ
Voltage @ Frequency	208.0 V @ 60 HZ 230.0 V @ 60 HZ
Agency Approvals	UR CSA
Ambient Temperature	40 °C
Auxillary Box	No Auxillary Box
Auxillary Box Lead Termination	None
Base Indicator	Rigid
Bearing Grease Type	Polyrex EM (-20F +300F)
Blower	None
Current @ Voltage	7.900 A @ 230.0 V 8.700 A @ 208.0 V
Design Code	L
Drip Cover	No Drip Cover
Duty Rating	CONT
Efficiency @ 100% Load	82.5 %
Electrically Isolated Bearing	Not Electrically Isolated
Feedback Device	NO FEEDBACK
Front Face Code	Standard
Front Shaft Indicator	None
Heater Indicator	No Heater
High Voltage Full Load Amps	7.9 a

Part detail

Revision	J
Type	AC
Mech. spec.	35KK375
Base	
Status	PRD/A
Elec. spec.	35WGN678
Layout	35LYKK375
Eff. date	05-14-2024
CD Diagram	CD0002A02
Poles	04
Leads	2#16 A PH,3#18 B%J
Proprietary	False
Created date	01-17-2013

Insulation Class	F
Inverter Code	Not Inverter
KVA Code	H
Lifting Lugs	No Lifting Lugs
Locked Bearing Indicator	Locked Bearing
Motor Lead Exit	Ko Box
Motor Lead Quantity/Wire Size	2 @ 16 AWG, A PH
Motor Lead Termination	Flying Leads
Motor Standards	NEMA
Motor Type	3535LC
Mounting Arrangement	F1
Number of Poles	4
Overall Length	14.16 IN
Power Factor	99
Product Family	General Purpose
Pulley End Bearing Type	Ball
Pulley Face Code	C-Face
Pulley Shaft Indicator	Standard
Rodent Screen	None
Service Factor	1.15
Shaft Diameter	0.875 IN
Shaft Extension Location	Pulley End
Shaft Ground Indicator	No Shaft Grounding
Shaft Rotation	Reversible
Shaft Slinger Indicator	No Slinger
Speed	1740 rpm
Speed Code	Single Speed
Starting Method	Direct on line
Thermal Device - Bearing	None
Thermal Device - Winding	Do Not Use
Vibration Sensor Indicator	No Vibration Sensor
Winding Thermal 1	Manual Thermal Overload
Winding Thermal 1 Location	KO
Winding Thermal 2	None

Nameplate

NP1257L									
CAT.NO.	CL3516TM								
SPEC.	35KK375N678G1								
HP	2								
VOLTS	208-230								
AMP	8.7-7.9								
RPM	1740								
FRAME	145TC			HZ	60		PH	1	
SER.F.	1.15	CODE	H	DES	L	CL	F		
NEMA-NOM-EFF	82.5	PF	99						
RATING	40C AMB-CONT								
CC									
DE	6205	ODE	6203						
ENCL	TEFC	SN							

AC Induction Motor Performance Data

Record # 41012

Typical performance - not guaranteed values

Winding: 35WGN678-R001		Type: 3535LC		Enclosure: TEFC	
Nameplate Data			230 V, 60 Hz: Single Voltage Motor		
Rated Output (HP)	2	Full Load Torque	6.04 LB-FT		
Volts	208-230	Start Configuration	direct on line		
Full Load Amps	7.8-7.9	Breakdown Torque	13.1 LB-FT		
R.P.M.	1740	Pull-up Torque	12.2 LB-FT		
Hz	60 Phase	1	Locked-rotor Torque	17.9 LB-FT	
NEMA Design Code	L KVA Code	H	Starting Current	58.5 A	
Service Factor (S.F.)	1.15		No-load Current	1.22 A	
NEMA Nom. Eff.	82.5 Power Factor	99	Line-line Res. @ 25°C	1.5935 Ω A Ph 3.2782 Ω B Ph	
Rating - Duty	40C AMB-CONT		Temp. Rise @ Rated Load	75°C	
S.F. Amps			Temp. Rise @ S.F. Load	93°C	

Load Characteristics 230 V, 60 Hz, 2 HP

% of Rated Load	25	50	75	100	125	150	S.F.
Power Factor	99	100	100	99	99	98	99
Efficiency	61.1	77.4	82.1	83.1	81.2	77.3	82
Speed	1786.6	1773.4	1758.2	1739.3	1717.4	1687	1726
Line amperes	2.65	4.18	5.92	7.87	10.1	12.8	9.21

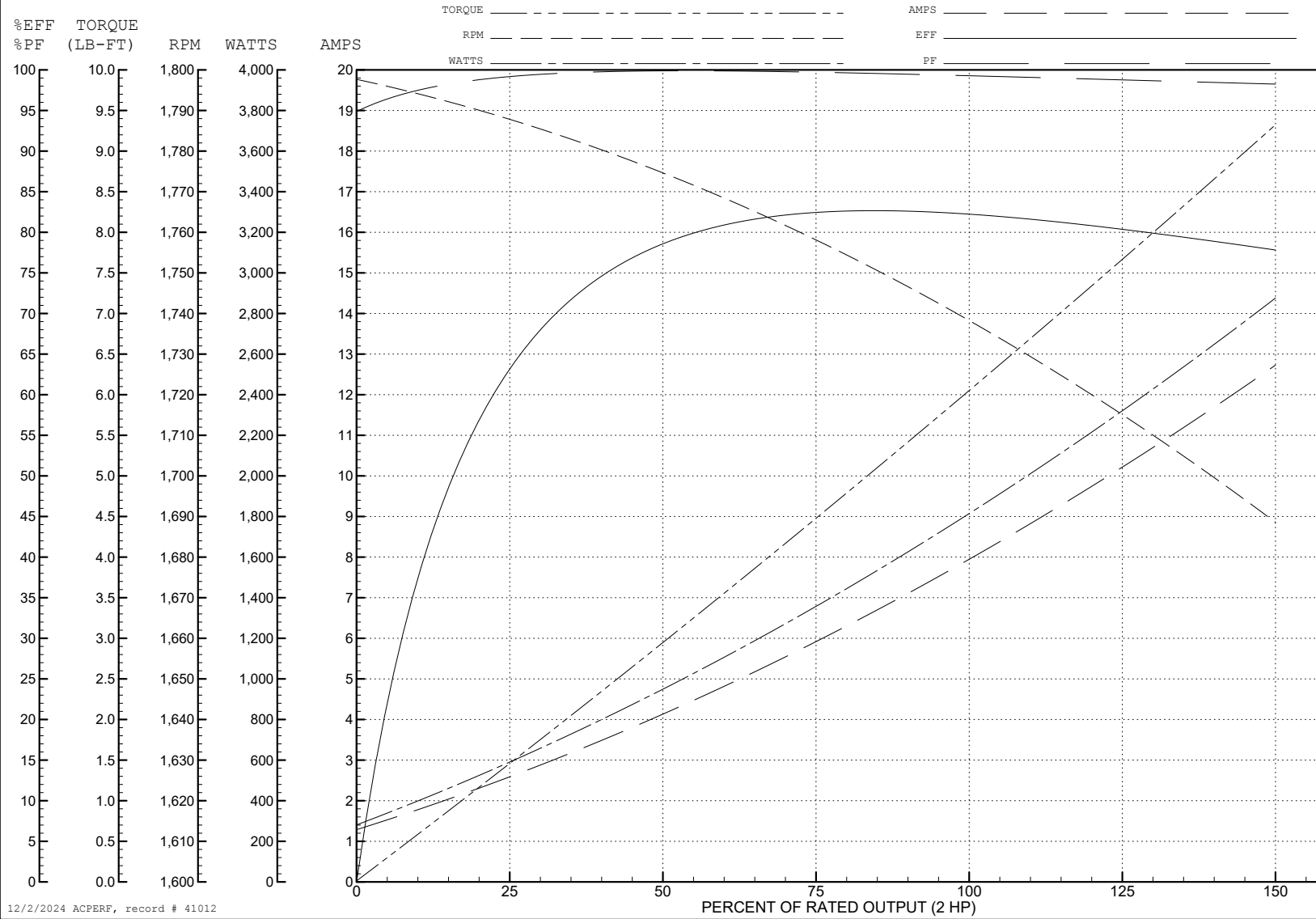
ABB Motors and Mechanical Inc.

WINDING # 35WGN678

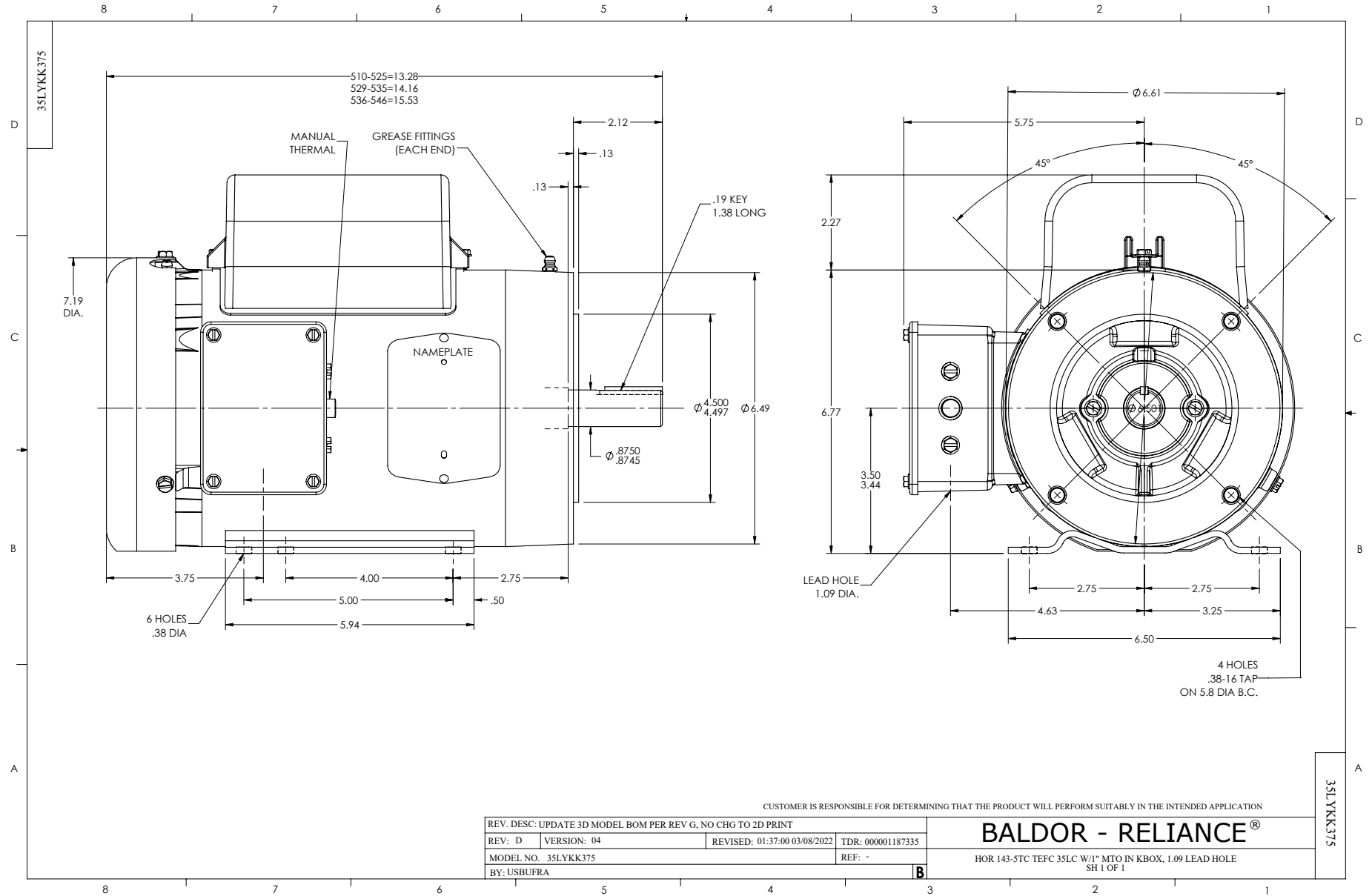
Typical performance - not guaranteed values.

2 HP 1 PH 60 HZ 1740 RPM 230 V 3535LC

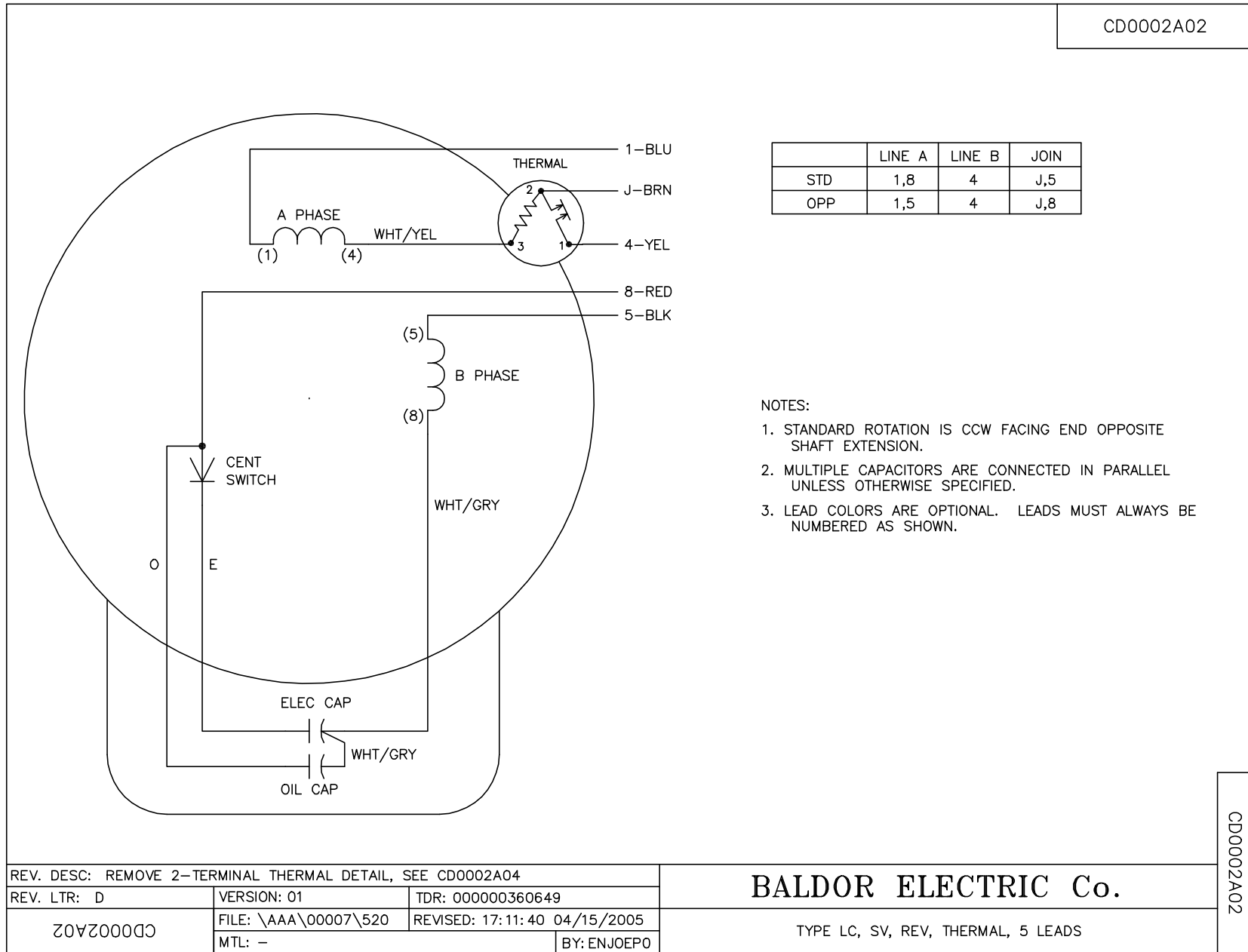
TORQUES (LB-FT): PO=13.1 PU=12.2 LR=17.9 LRA=58.5



12/2/2024 ACPERF, record # 41012



CD0002A02



	LINE A	LINE B	JOIN
STD	1,8	4	J,5
OPP	1,5	4	J,8

- NOTES:
1. STANDARD ROTATION IS CCW FACING END OPPOSITE SHAFT EXTENSION.
 2. MULTIPLE CAPACITORS ARE CONNECTED IN PARALLEL UNLESS OTHERWISE SPECIFIED.
 3. LEAD COLORS ARE OPTIONAL. LEADS MUST ALWAYS BE NUMBERED AS SHOWN.

REV. DESC: REMOVE 2-TERMINAL THERMAL DETAIL, SEE CD0002A04		
REV. LTR: D	VERSION: 01	TDR: 000000360649
CD0002A02	FILE: \AAA\00007\520	REVISED: 17:11:40 04/15/2005
	MTL: -	BY: ENJOEPO

BALDOR ELECTRIC Co.

TYPE LC, SV, REV, THERMAL, 5 LEADS

CD0002A02