



---

# Customer information packet

## CL3513

1.5HP, 3450RPM, 1PH, 60HZ, 56C, 3528L, TEFC, F1

Class - None

Division - Not Applicable

## Specifications

Enclosure	TEFC
Frame	56C
Frame Material	Steel
Frequency	60.00 Hz
Haz Area Class and Group	None
Haz Area Division	Not Applicable
Motor Letter Type	Cap Start, Induction Run
Output @ Frequency	1.500 HP @ 60 HZ
Phase	1
Synchronous Speed @ Frequency	3600 RPM @ 60 HZ
Voltage @ Frequency	230.0 V @ 60 HZ 208.0 V @ 60 HZ 115.0 V @ 60 HZ
Agency Approvals	CSA UR
Ambient Temperature	40 °C
Auxillary Box	No Auxillary Box
Auxillary Box Lead Termination	None
Base Indicator	Rigid
Bearing Grease Type	Polyrex EM (-20F +300F)
Blower	None
Current @ Voltage	7.900 A @ 208.0 V 7.500 A @ 230.0 V 15.000 A @ 115.0 V
Design Code	L
Drip Cover	No Drip Cover
Duty Rating	CONT
Efficiency @ 100% Load	70.0 %
Electrically Isolated Bearing	Not Electrically Isolated
Feedback Device	NO FEEDBACK
Front Face Code	Standard
Front Shaft Indicator	None

## Part detail

Revision	AM
Type	AC
Mech. spec.	35T946
Base	
Status	PRD/A
Elec. spec.	35WG0199
Layout	35LYT946
Eff. date	05-07-2024
CD Diagram	CD0001
Poles	02
Leads	4#16 A PH,2#18 B PH
Proprietary	False
Created date	06-22-2007

Heater Indicator	No Heater
High Voltage Full Load Amps	7.5 a
Insulation Class	F
Inverter Code	Not Inverter
KVA Code	H
Lifting Lugs	No Lifting Lugs
Locked Bearing Indicator	Locked Bearing
Motor Lead Exit	Ko Box
Motor Lead Quantity/Wire Size	4 @ 16 AWG, A PH
Motor Lead Termination	Flying Leads
Motor Standards	NEMA
Motor Type	3528L
Mounting Arrangement	F1
Number of Poles	2
Overall Length	13.23 IN
Power Factor	82
Product Family	General Purpose
Pulley End Bearing Type	Ball
Pulley Face Code	C-Face
Pulley Shaft Indicator	Standard
Rodent Screen	None
RoHS Status	ROHS COMPLIANT
Service Factor	1.15
Shaft Diameter	0.625 IN
Shaft Extension Location	Pulley End
Shaft Ground Indicator	No Shaft Grounding
Shaft Rotation	Reversible
Shaft Slinger Indicator	No Slinger
Speed	3450 rpm
Speed Code	Single Speed
Starting Method	Direct on line
Thermal Device - Bearing	None
Thermal Device - Winding	None
Vibration Sensor Indicator	No Vibration Sensor

Winding Thermal 1	None
Winding Thermal 2	None

---

**Nameplate**

<b>NP1256L</b>									
<b>CAT.NO.</b>	CL3513								
<b>SPEC.</b>	35T946-0199								
<b>HP</b>	1.5								
<b>VOLTS</b>	115/208-230								
<b>AMP</b>	15/7.9-7.5								
<b>RPM</b>	3450								
<b>FRAME</b>	56C		<b>HZ</b>	60		<b>PH</b>	1		
<b>SER.F.</b>	1.15	<b>CODE</b>	H	<b>DES</b>	L	<b>CLASS</b>	F		
<b>NEMA-NOM-EFF</b>	70	<b>PF</b>	82						
<b>RATING</b>	40C AMB-CONT								
<b>CC</b>									
<b>DE</b>	6205		<b>ODE</b>	6203					
<b>ENCL</b>	TEFC	<b>SN</b>							

**AC Induction Motor Performance Data**

Record # 72374

Typical performance - not guaranteed values

Winding: 35WG0199-R005		Type: 3528L	Enclosure: TEFC
<b>Nameplate Data</b>		<b>115 V, 60 Hz: Low Voltage Connection</b>	
Rated Output (HP)	1.5	Full Load Torque	2.3 LB-FT
Volts	115/208-230	Start Configuration	direct on line
Full Load Amps	15/7.9-7.5	Breakdown Torque	5.6 LB-FT
R.P.M.	3450	Pull-up Torque	5.2 LB-FT
Hz	60 Phase 1	Locked-rotor Torque	5.5 LB-FT
NEMA Design Code	L KVA Code H	Starting Current	84 A
Service Factor (S.F.)	1.15	No-load Current	9 A
NEMA Nom. Eff.	70 Power Factor 82	Line-line Res. @ 25°C	0.333 Ω A Ph 1.24 Ω B Ph
Rating - Duty	40C AMB-CONT	Temp. Rise @ Rated Load	70°C
S.F. Amps		Temp. Rise @ S.F. Load	81°C
		Locked-rotor Power Factor	86.9
		Rotor inertia	0.0774 LB-FT <sup>2</sup>

**Load Characteristics 115 V, 60 Hz, 1.5 HP**

% of Rated Load	25	50	75	100	125	150	S.F.
Power Factor	49	66	79	81	85	87	83
Efficiency	51.9	65.3	68.6	71.2	70.7	68.4	70.9
Speed	3567	3541	3514	3475	3439	3397	3453
Line amperes	10	11.6	13.8	17.2	20.4	24.2	19.1

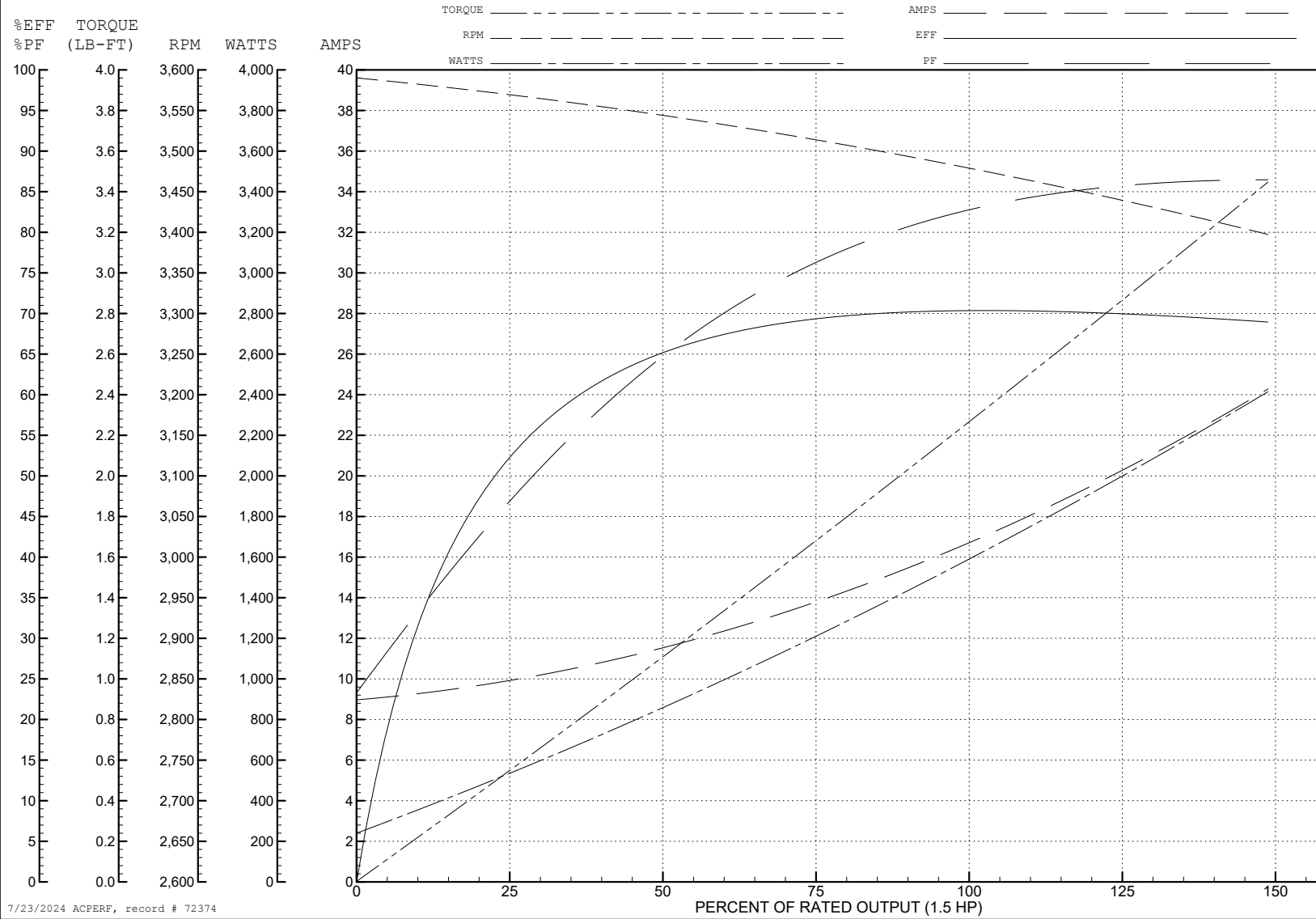
ABB Motors and Mechanical Inc.

WINDING # 35WG0199

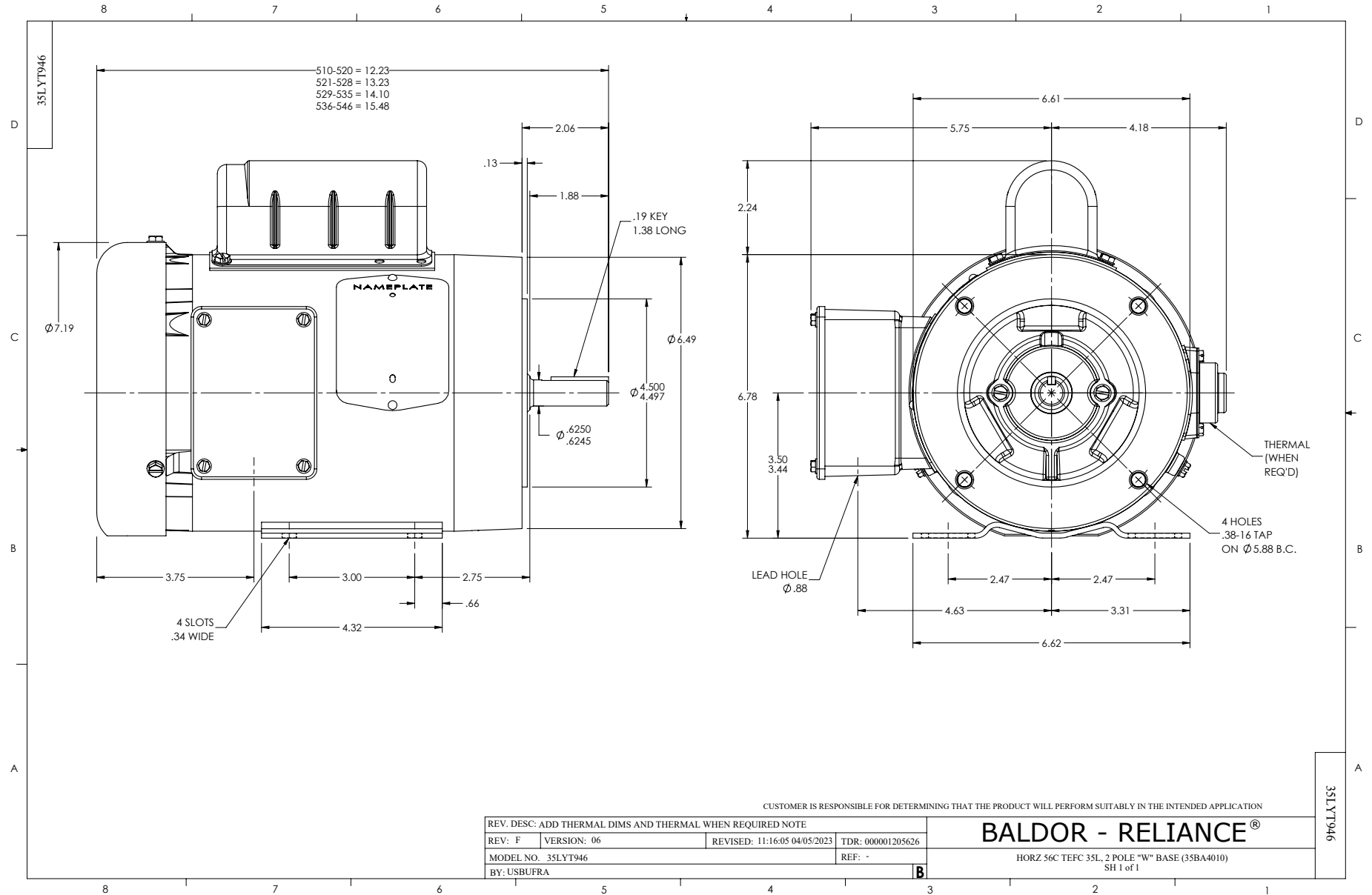
Typical performance - not guaranteed values.

1.5 HP 1 PH 60 HZ 3450 RPM 115 V 3528L

TORQUES (LB-FT): PO=5.6 PU=5.2 LR=5.5 LRA=84

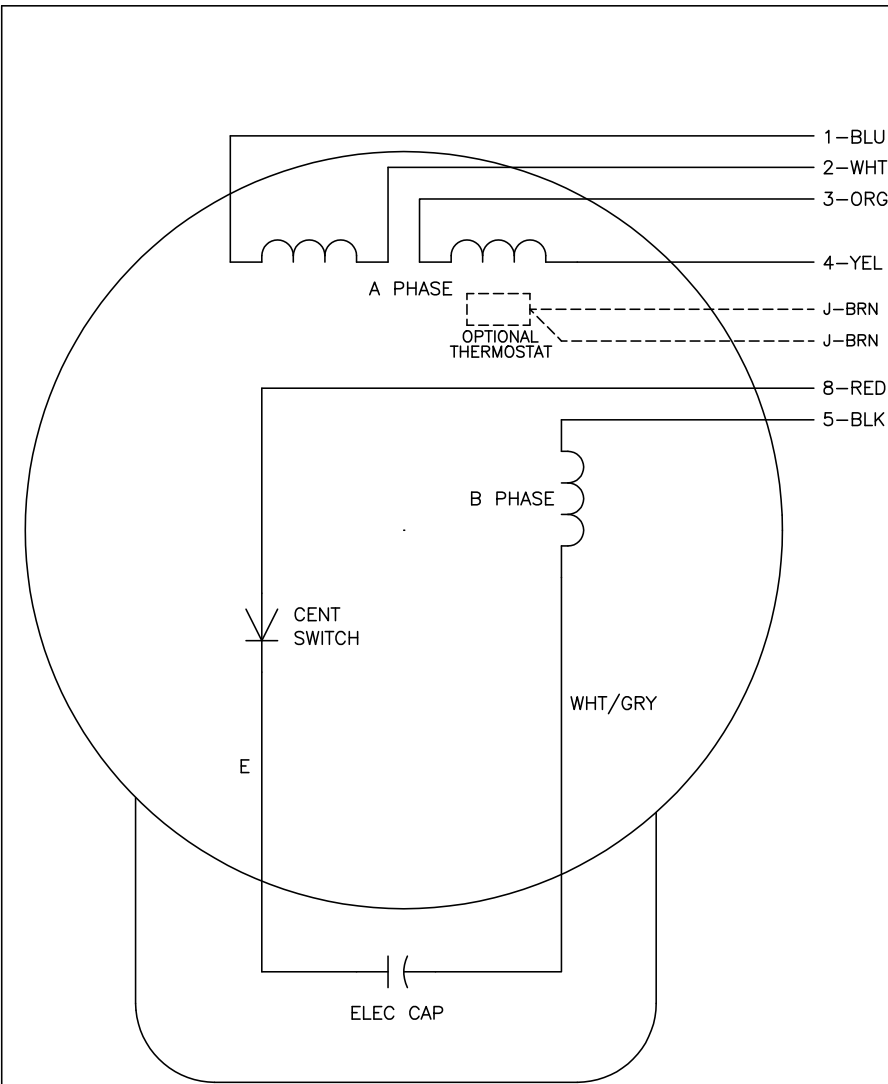


7/23/2024 ACPERF, record # 72374





CD0001



	LINE A	LINE B	JOIN
HIGH STD	1	4,5	2,3,8
HIGH OPP	1	4,8	2,3,5
LOW STD	1,3,8	2,4,5	-
LOW OPP	1,3,5	2,4,8	-

**NOTES:**

1. STANDARD ROTATION IS CCW FACING END OPPOSITE SHAFT EXTENSION.
2. OPTIONAL THERMOSTAT IS PROVIDED WHEN SPECIFIED.
3. MULTIPLE CAPACITORS ARE CONNECTED IN PARALLEL UNLESS OTHERWISE SPECIFIED.
4. LEAD COLORS ARE OPTIONAL. LEADS MUST ALWAYS BE NUMBERED AS SHOWN.

REV. DESC: REVISE TO SHOW OPTIONAL COLORS			
REV. LTR: D	BY: JLP	REVISED: 04/08/99 1:16	TDR: 0178636
100000		FILE: AAA00007405	MDL: -
		MTL: -	

**BALDOR ELECTRIC Co.**

TYPE L, DV, REV, 6 LEADS

CD0001