

BALDOR • RELIANCE

Customer information packet

CJL3507A

.75HP, 1725RPM, 1PH, 60HZ, 56J, 3428LC, TEFC, F

Class - None

Division - Not Applicable

Specifications

Enclosure	TEFC
Frame	56J
Frame Material	Steel
Frequency	60.00 Hz
Haz Area Class and Group	None
Haz Area Division	Not Applicable
Motor Letter Type	Cap Start, Cap Run
Output @ Frequency	.750 HP @ 60 HZ
Phase	1
Synchronous Speed @ Frequency	1800 RPM @ 60 HZ
Voltage @ Frequency	115.0 V @ 60 HZ 230.0 V @ 60 HZ
Agency Approvals	CSA UR
Ambient Temperature	40 °C
Auxillary Box	No Auxillary Box
Auxillary Box Lead Termination	None
Base Indicator	Rigid
Bearing Grease Type	Polyrex EM (-20F +300F)
Blower	None
Current @ Voltage	8.200 A @ 115.0 V 5.400 A @ 208.0 V 4.100 A @ 230.0 V
Design Code	N
Drip Cover	No Drip Cover
Duty Rating	CONT
Efficiency @ 100% Load	74.0 %
Electrically Isolated Bearing	Not Electrically Isolated
Feedback Device	NO FEEDBACK
Front Face Code	Standard
Front Shaft Indicator	None
Heater Indicator	No Heater

Part detail

Revision	G
Type	AC
Mech. spec.	34M631
Base	
Status	PRD/A
Elec. spec.	34WGW998
Layout	34LYM631
Eff. date	05-25-2024
CD Diagram	CD0308
Poles	04
Leads	4#18,1#16 #4TH
Proprietary	False
Created date	03-17-2015

High Voltage Full Load Amps	4.1 a
Insulation Class	B
Inverter Code	Not Inverter
KVA Code	L
Lifting Lugs	No Lifting Lugs
Locked Bearing Indicator	Locked Bearing
Motor Lead Exit	Ko Box
Motor Lead Quantity/Wire Size	4 @ 18 AWG
Motor Lead Termination	Flying Leads
Motor Standards	NEMA
Motor Type	3428LC
Mounting Arrangement	F1
Number of Poles	4
Overall Length	12.97 IN
Power Factor	80
Product Family	General Purpose
Pulley End Bearing Type	Ball
Pulley Face Code	C-Face
Pulley Shaft Indicator	Ext Thread
Rodent Screen	None
Service Factor	1.25
Shaft Diameter	0.625 IN
Shaft Extension Location	Pulley End
Shaft Ground Indicator	No Shaft Grounding
Shaft Rotation	Fixed Opposite Standard
Shaft Slinger Indicator	No Slinger
Speed	1725 rpm
Speed Code	Single Speed
Starting Method	Direct on line
Thermal Device - Bearing	None
Thermal Device - Winding	None
Vibration Sensor Indicator	No Vibration Sensor
Winding Thermal 1	Automatic Thermal Overload
Winding Thermal 1 Location	SB

Nameplate

NP1257L									
CAT.NO.	CJL3507A								
SPEC.	34M631W998								
HP	.75								
VOLTS	115/230								
AMP	8.2/4.1								
RPM	1725								
FRAME	56J			HZ	60		PH	1	
SER.F.	1.25	CODE	L	DES	N	CL	B		
NEMA-NOM-EFF	74	PF	80						
RATING	40C AMB-CONT								
CC									
DE	6203	ODE	6203						
ENCL	TEFC	SN							
	SFA 9.8/4.9								

Accessories

Part number	Description	Multiplier
34-171	C FACE KIT	A8

AC Induction Motor Performance Data

Record # 7176

Typical performance - not guaranteed values

Winding: 34WGW998-R001		Type: 3428LC		Enclosure: TEFC	
Nameplate Data			230 V, 60 Hz: High Voltage Connection		
Rated Output (HP)	.75		Full Load Torque	2.25 LB-FT	
Volts	115/230		Start Configuration	direct on line	
Full Load Amps	8.2/4.1		Breakdown Torque	5.7 LB-FT	
R.P.M.	1725		Pull-up Torque	4.7 LB-FT	
Hz	60 Phase	1	Locked-rotor Torque	7.5 LB-FT	
NEMA Design Code	N	KVA Code	L	Starting Current	31 A
Service Factor (S.F.)	1.25		No-load Current	2.7 A	
NEMA Nom. Eff.	74	Power Factor	80	Line-line Res. @ 25°C	3.11 Ω A Ph 1.73 Ω B Ph
Rating - Duty	40C AMB-CONT		Temp. Rise @ Rated Load	62°C	
S.F. Amps	9.8/4.9		Temp. Rise @ S.F. Load	81°C	

Load Characteristics 230 V, 60 Hz, 0.75 HP

% of Rated Load	25	50	75	100	125	150	S.F.
Power Factor	43	61	72	80	85	87	0
Efficiency	53.6	67.7	73	73.9	93.2	71.4	0
Speed	1784	1770	1755	1739	1717	1694	0
Line amperes	2.7	3	3.5	4.1	4.9	5.8	4.9

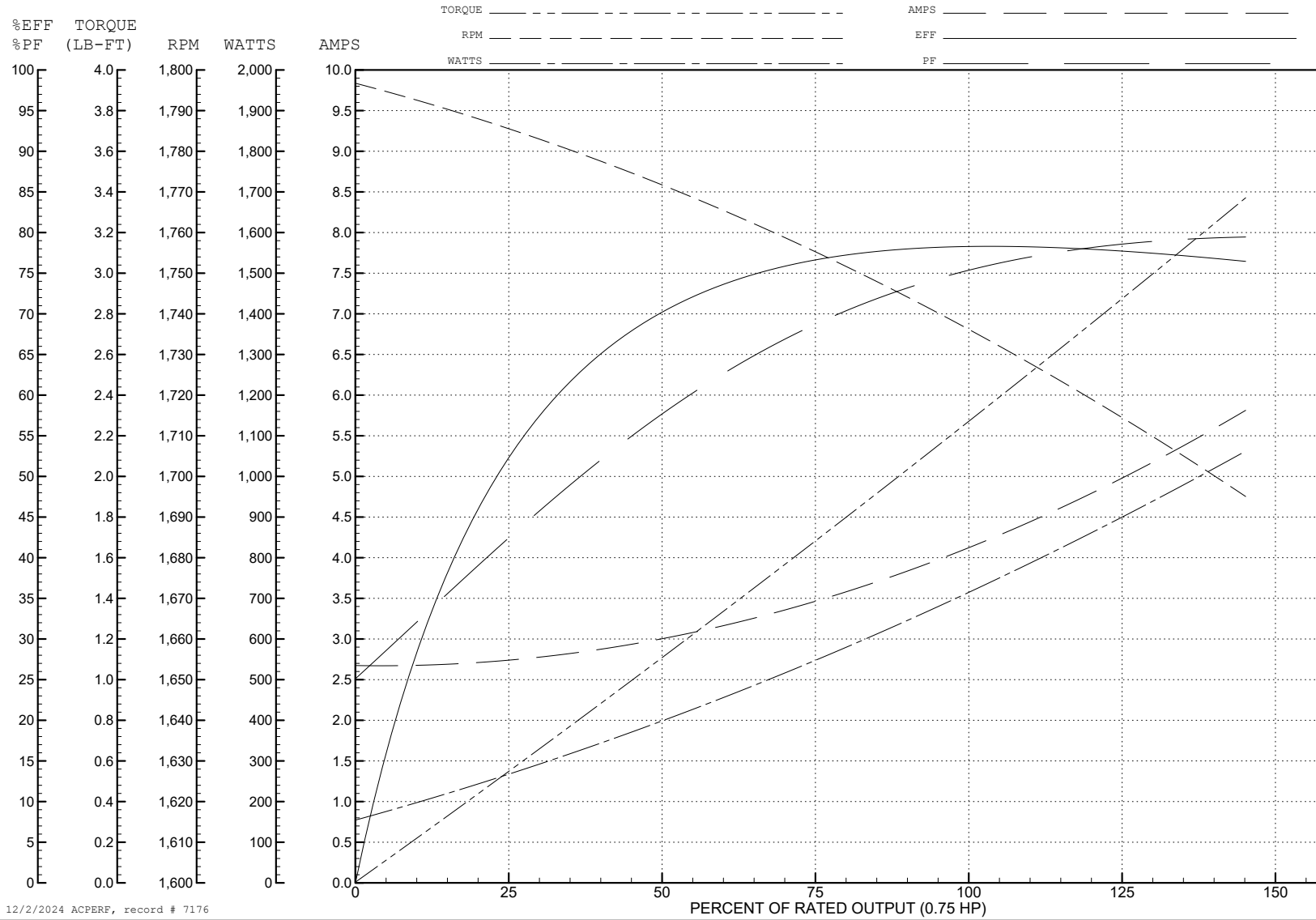
ABB Motors and Mechanical Inc.

WINDING # 34WGW998

Typical performance - not guaranteed values.

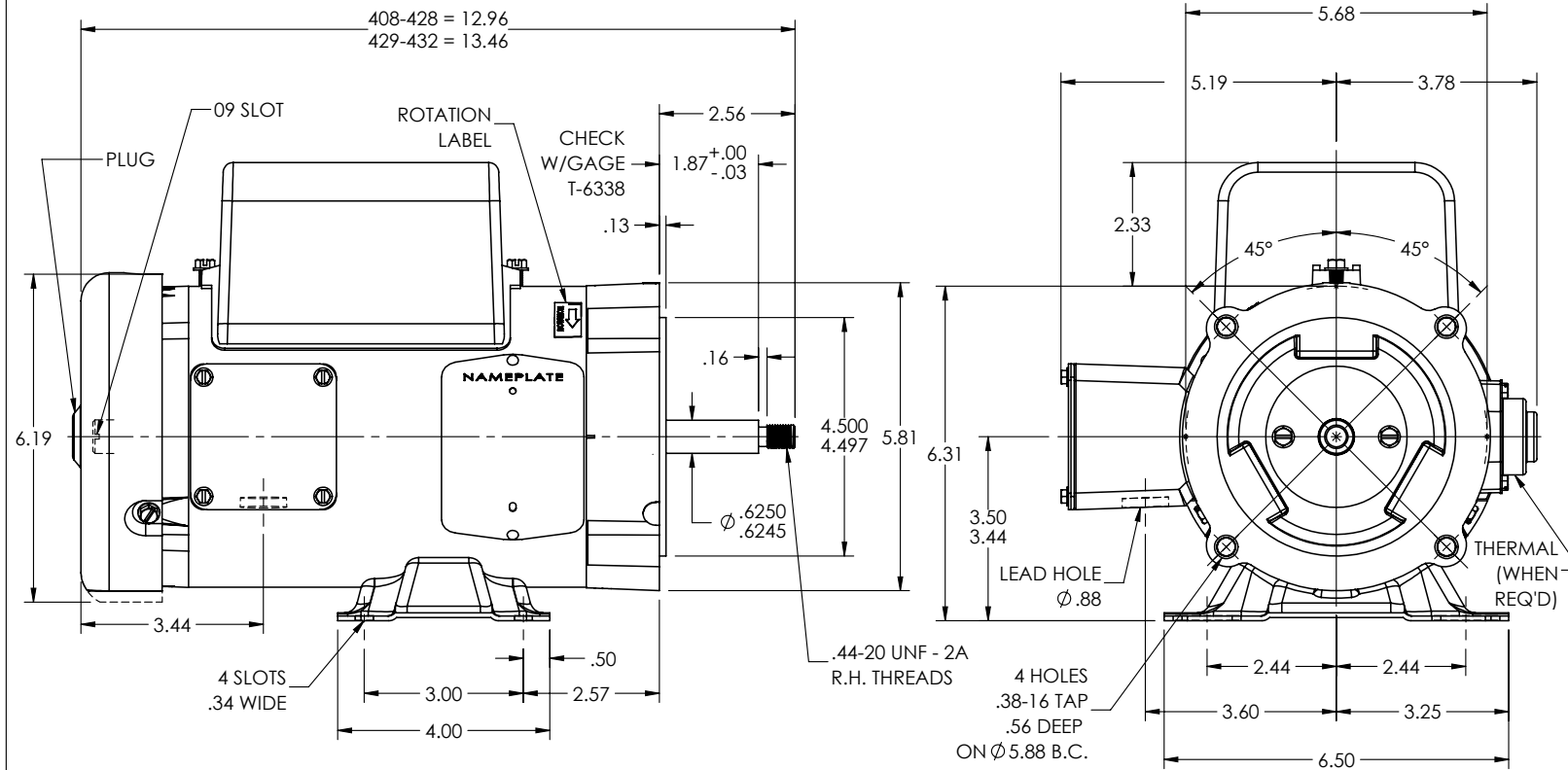
0.75 HP 1 PH 60 HZ 1725 RPM 230 V 3428LC

TORQUES (LB-FT): PO=5.7 PU=4.7 LR=7.5 LRA=31



12/2/2024 ACPERF, record # 7176

34LYM631



CUSTOMER IS RESPONSIBLE FOR DETERMINING THAT THE PRODUCT WILL PERFORM SUITABLY IN THE INTENDED APPLICATION

REV. DESC: LOAD TO SOLIDWORKS - REV "-"

REV: A VERSION: 01 REVISED: 08:25:20 12/21/2022 TDR: 000001201165

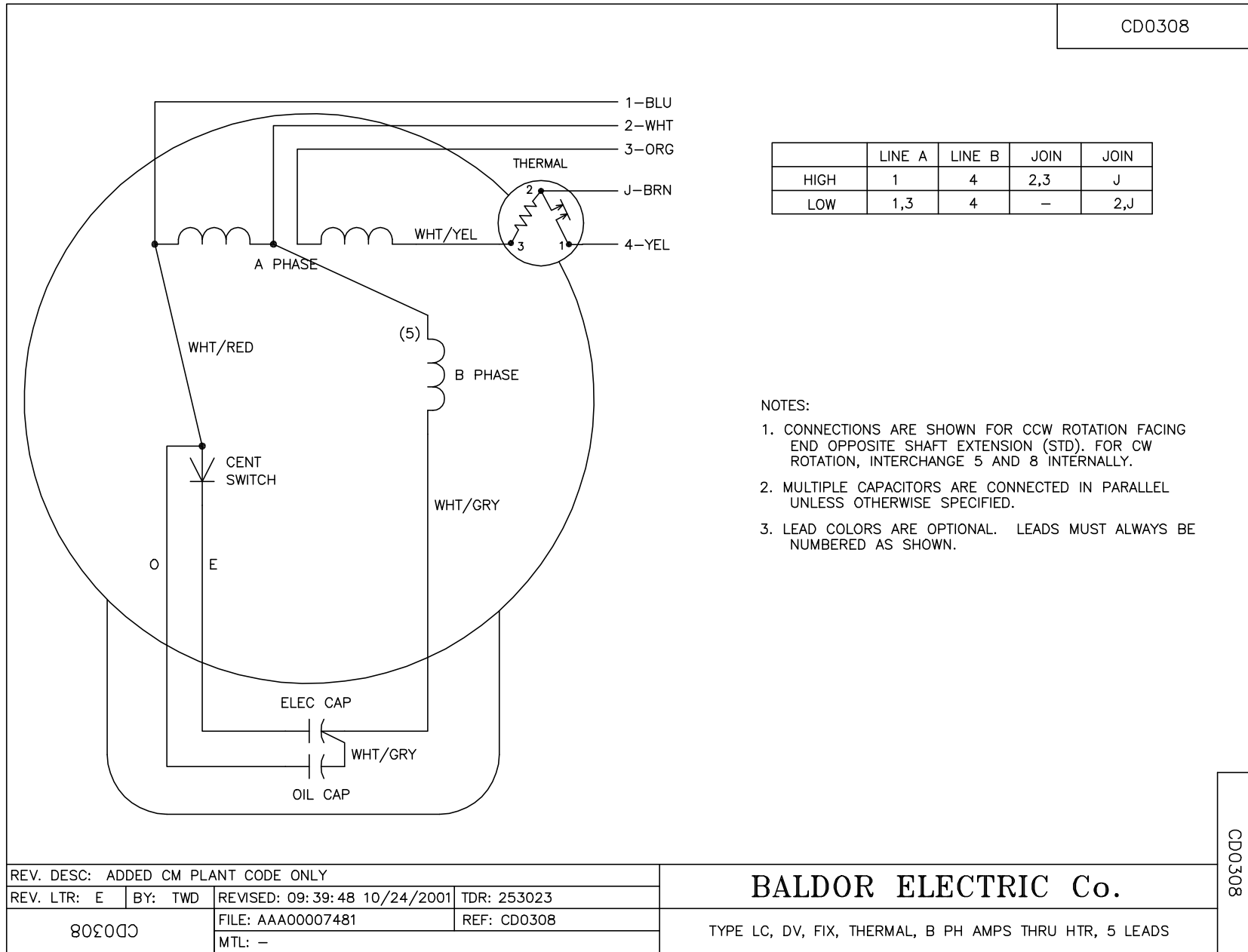
34LYM631 MODEL NO. 34LYM631 REF: -
 BY: ENFRAJ0

BALDOR - RELIANCE®

SPL HORZ 34LC NEMA 56J TEFC W/SPL STACK LGTHS.

34LYM631

CD0308



REV. DESC: ADDED CM PLANT CODE ONLY			
REV. LTR: E	BY: TWD	REVISED: 09:39:48 10/24/2001	TDR: 253023
803000		FILE: AAA00007481	REF: CD0308
		MTL: -	

BALDOR ELECTRIC Co.

TYPE LC, DV, FIX, THERMAL, B PH AMPS THRU HTR, 5 LEADS

CD0308