

**BALDOR • RELIANCE**

---

# Customer information packet

## CHM565A

1HP, 1140RPM, 3PH, 60HZ, 56, 3524M, TEAO, F1, N

Class - None

Division - Not Applicable

## Specifications

Enclosure	TEAO
Frame	56
Frame Material	Steel
Frequency	60.00 Hz
Haz Area Class and Group	None
Haz Area Division	Not Applicable
Motor Letter Type	Three Phase
Output @ Frequency	1.000 HP @ 60 HZ
Phase	3
Synchronous Speed @ Frequency	1200 RPM @ 60 HZ
Voltage @ Frequency	460.0 V @ 60 HZ 230.0 V @ 60 HZ 208.0 V @ 60 HZ
Agency Approvals	CSA UR
Ambient Temperature	40 °C
Auxillary Box	No Auxillary Box
Auxillary Box Lead Termination	None
Base Indicator	Resilient
Bearing Grease Type	Polyrex EM (-20F +300F)
Blower	None
Current @ Voltage	3.700 A @ 208.0 V 3.600 A @ 230.0 V 1.800 A @ 460.0 V
Design Code	B
Drip Cover	No Drip Cover
Duty Rating	CONT
Efficiency @ 100% Load	74.0 %
Electrically Isolated Bearing	Not Electrically Isolated
Feedback Device	NO FEEDBACK
Front Face Code	Terminal Panel
Front Shaft Indicator	None

## Part detail

Revision	H
Type	AC
Mech. spec.	35X463
Base	
Status	PRD/A
Elec. spec.	35WGL465
Layout	35LYX463
Eff. date	05-08-2024
CD Diagram	CD0007
Poles	06
Leads	12#18
Proprietary	False
Created date	12-22-2015

Heater Indicator	No Heater
High Voltage Full Load Amps	1.8 a
Insulation Class	F
Inverter Code	Not Inverter
KVA Code	K
Lifting Lugs	No Lifting Lugs
Locked Bearing Indicator	No Locked Bearing
Motor Lead Exit	Terminal Panel
Motor Lead Quantity/Wire Size	12 @ 18 AWG
Motor Lead Termination	Flying Leads
Motor Standards	NEMA
Motor Type	3524M
Mounting Arrangement	F1
Number of Poles	6
Overall Length	12.42 IN
Power Factor	68
Product Family	General Purpose
Pulley End Bearing Type	Ball
Pulley Face Code	Resilient Mount
Pulley Shaft Indicator	Standard
Rodent Screen	None
RoHS Status	ROHS COMPLIANT
Service Factor	1.15
Shaft Diameter	0.625 IN
Shaft Extension Location	Pulley End
Shaft Ground Indicator	No Shaft Grounding
Shaft Rotation	Reversible
Shaft Slinger Indicator	No Slinger
Speed	1140 rpm
Speed Code	Single Speed
Starting Method	Direct on line
Thermal Device - Bearing	None
Thermal Device - Winding	None
Vibration Sensor Indicator	No Vibration Sensor

<b>Winding Thermal 1</b>	<b>Automatic Thermal Overload</b>
<b>Winding Thermal 1 Location</b>	<b>SB</b>
<b>Winding Thermal 2</b>	<b>None</b>

**Nameplate**

<b>NP1257L</b>									
<b>CAT.NO.</b>	CHM565A								
<b>SPEC.</b>	35X463L465G1								
<b>HP</b>	1								
<b>VOLTS</b>	208-230/460								
<b>AMP</b>	3.7-3.6/1.8								
<b>RPM</b>	1140								
<b>FRAME</b>	56			<b>HZ</b>	60		<b>PH</b>	3	
<b>SER.F.</b>	1.15	<b>CODE</b>	K	<b>DES</b>	B	<b>CL</b>	F		
<b>NEMA-NOM-EFF</b>	74	<b>PF</b>	68						
<b>RATING</b>	40C AMB-CONT								
<b>CC</b>									
<b>DE</b>	6203	<b>ODE</b>	6203						
<b>ENCL</b>	TEAO	<b>SN</b>							

**AC Induction Motor Performance Data**

Record # 61293

Typical performance - not guaranteed values

Winding: 35WGL465-R002		Type: 3524M		Enclosure: TEAO	
<b>Nameplate Data</b>			<b>460 V, 60 Hz: High Voltage Connection</b>		
Rated Output (HP)	1	Full Load Torque	4.47 LB-FT		
Volts	208-230/460	Start Configuration	direct on line		
Full Load Amps	3.7-3.6/1.8	Breakdown Torque	15.2 LB-FT		
R.P.M.	1140	Pull-up Torque	10.1 LB-FT		
Hz	60 Phase	3	Locked-rotor Torque	12 LB-FT	
NEMA Design Code	B KVA Code	K	Starting Current	10 A	
Service Factor (S.F.)	1.15	No-load Current	1.23 A		
NEMA Nom. Eff.	74 Power Factor	68	Line-line Res. @ 25°C	19.8 Ω	
Rating - Duty	40C AMB-CONT	Temp. Rise @ Rated Load	32°C		
S.F. Amps		Temp. Rise @ S.F. Load	37°C		
		Locked-rotor Power Factor	58		
		Rotor inertia	0.142 LB-FT <sup>2</sup>		

**Load Characteristics 460 V, 60 Hz, 1 HP**

% of Rated Load	25	50	75	100	125	150	S.F.
Power Factor	31	46	57	68	73	78	71
Efficiency	59.2	73	78.6	75.9	75.4	73.4	75.6
Speed	1187	1177	1166	1153	1138	1122	1144
Line amperes	1.29	1.4	1.55	1.78	2.07	2.35	1.95

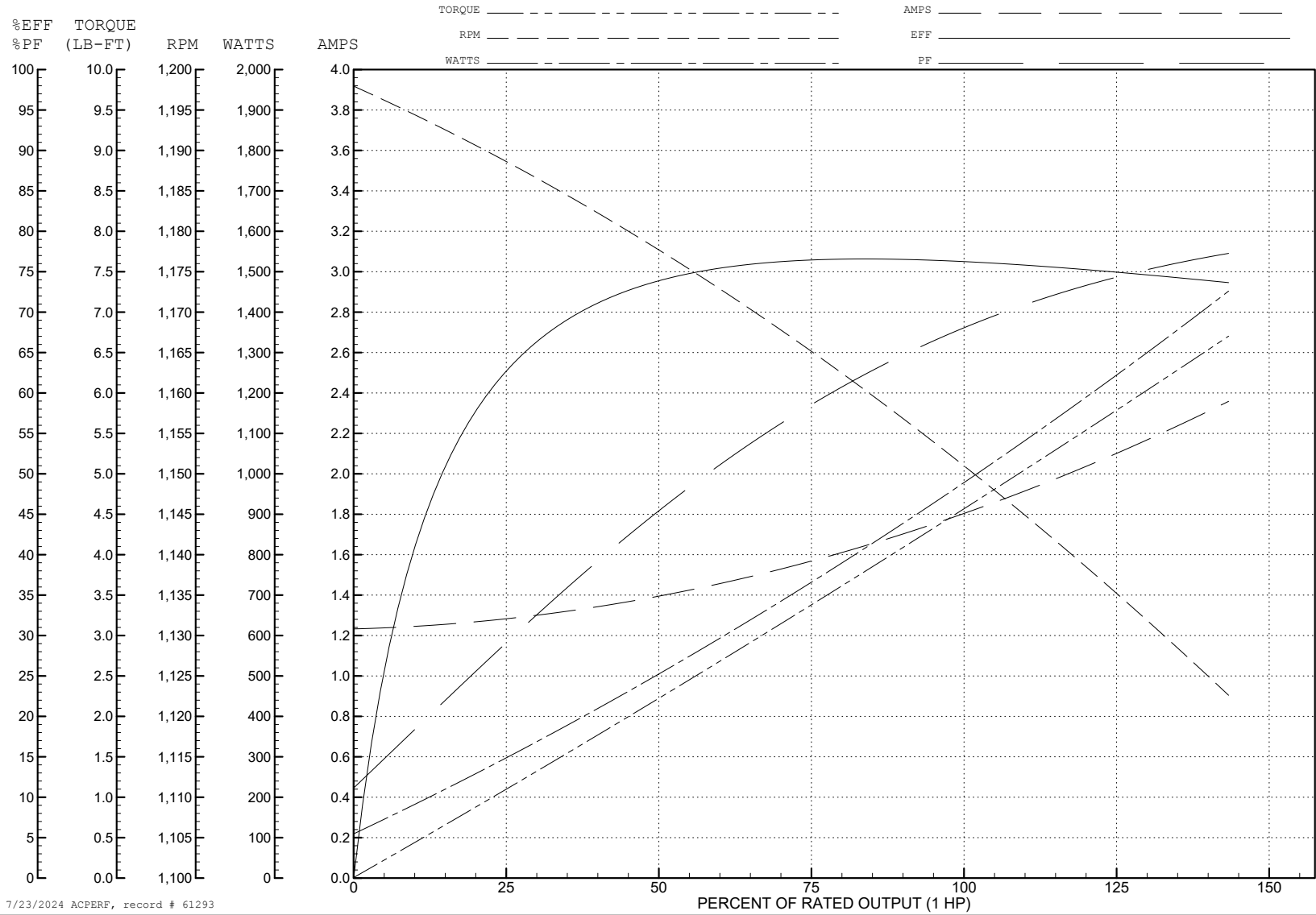
ABB Motors and Mechanical Inc.

WINDING # 35WGL465

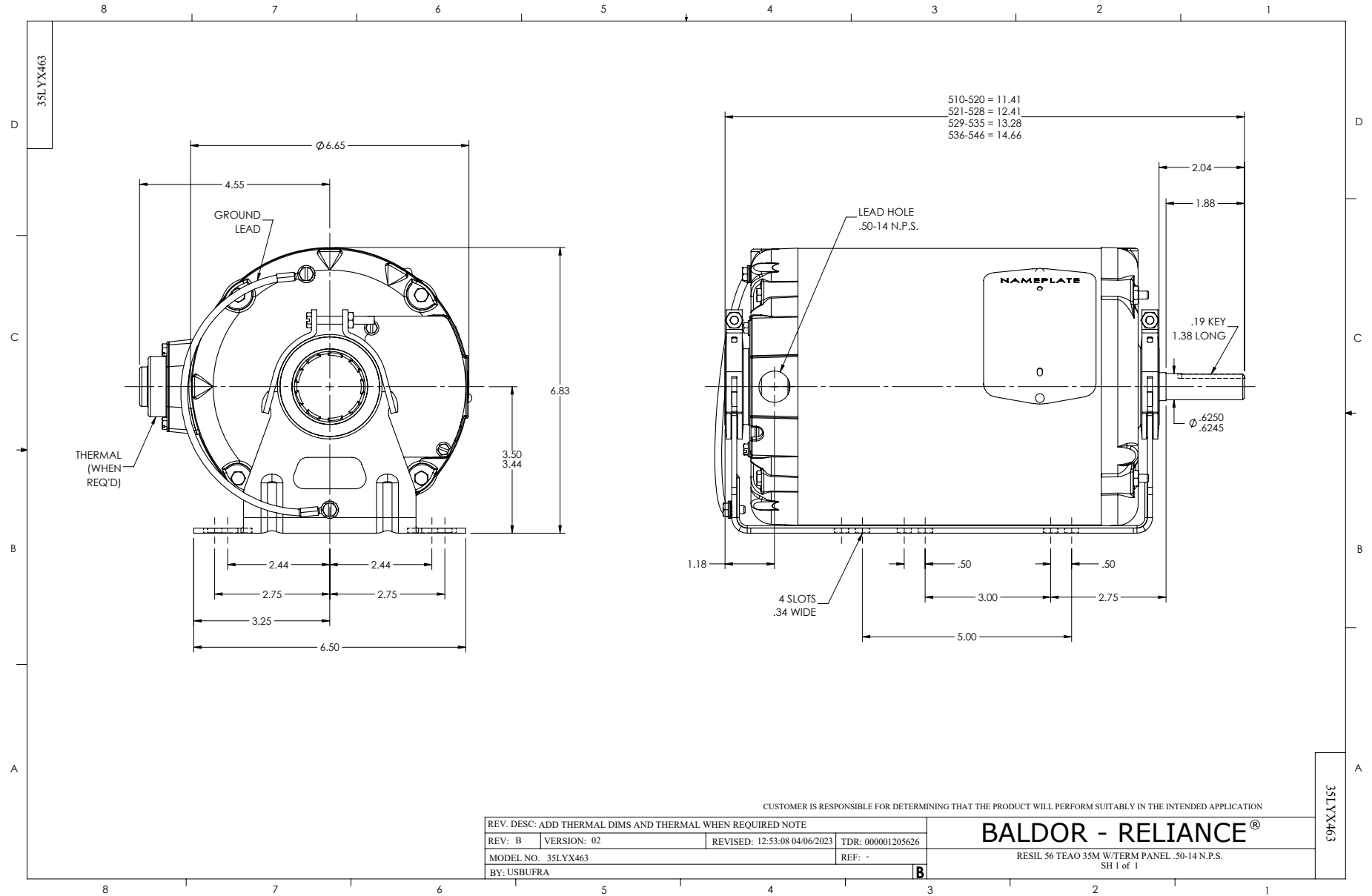
Typical performance - not guaranteed values.

1 HP 3 PH 60 HZ 1140 RPM 460 V 3524M

TORQUES (LB-FT): PO=15.2 PU=10.1 LR=12 LRA=10

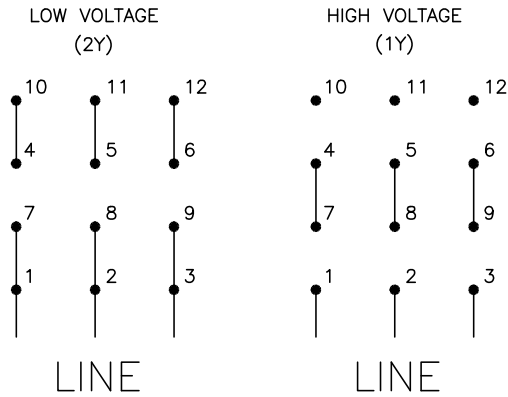
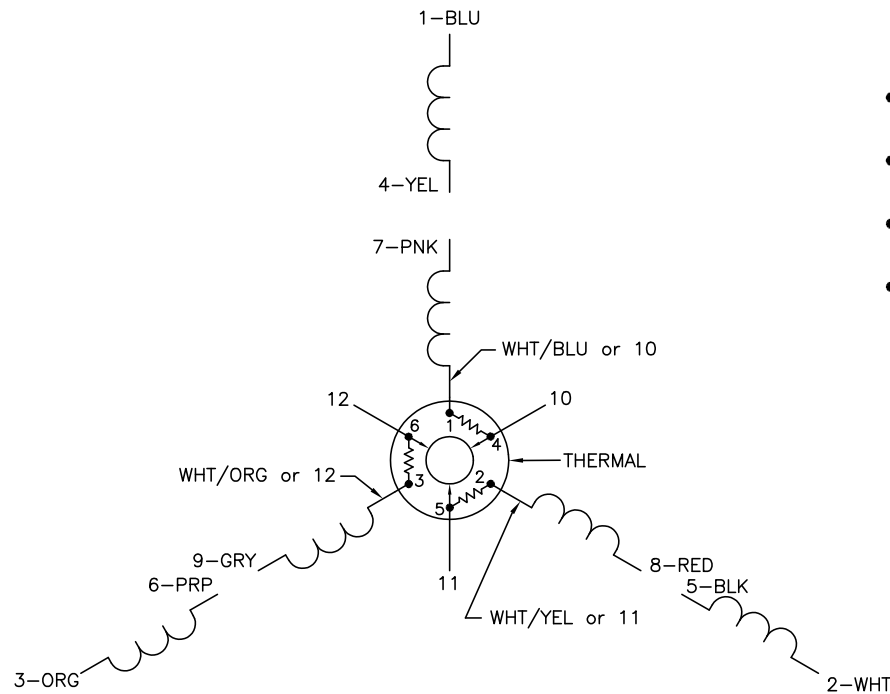


7/23/2024 ACPERF, record # 61293





CD0007



NOTES:

1. INTERCHANGE ANY TWO LINE LEADS TO REVERSE ROTATION.
2. ACTUAL NUMBER OF INTERNAL PARALLEL CIRCUITS MAY VARY.
3. LEAD COLORS ARE OPTIONAL. LEADS MUST ALWAYS BE NUMBERED AS SHOWN.

CD0007

REV. DESC: ADDED "CK" PLANT CODE			
REV. LTR: E	BY: EAH	REVISED: 05/06/99 17:1	TDR: 0181040
∟00000		FILE: AAA00008370	MDL: -
		MTL: -	

**BALDOR ELECTRIC Co.**

3PH, DV, THERMAL, 12 LEADS