

BALDOR • RELIANCE

Customer information packet

CHM264A

.33HP, 1140RPM, 3PH, 60HZ, 48YZ, 3414M, TEAO, F

Class - None

Division - Not Applicable

Specifications

| | |
|--------------------------------|--|
| Enclosure | TEAO |
| Frame | 48YZ |
| Frame Material | Steel |
| Frequency | 60.00 Hz |
| Haz Area Class and Group | None |
| Haz Area Division | Not Applicable |
| Motor Letter Type | Three Phase |
| Output @ Frequency | .330 HP @ 60 HZ |
| Phase | 3 |
| Synchronous Speed @ Frequency | 1200 RPM @ 60 HZ |
| Voltage @ Frequency | 230.0 V @ 60 HZ 460.0 V @ 60 HZ |
| Agency Approvals | UR CSA |
| Ambient Temperature | 40 °C |
| Auxillary Box | No Auxillary Box |
| Auxillary Box Lead Termination | None |
| Base Indicator | Resilient |
| Bearing Grease Type | Polyrex EM (-20F +300F) |
| Blower | None |
| Current @ Voltage | .900 A @ 460.0 V 1.800 A @ 230.0 V 2.100 A @ 208.0 V |
| Design Code | B |
| Drip Cover | No Drip Cover |
| Duty Rating | CONT |
| Efficiency @ 100% Load | 70.0 % |
| Electrically Isolated Bearing | Not Electrically Isolated |
| Feedback Device | NO FEEDBACK |
| Front Face Code | Resilient Mount |
| Front Shaft Indicator | None |
| Heater Indicator | No Heater |

Part detail

| | |
|--------------|------------|
| Revision | M |
| Type | AC |
| Mech. spec. | 34M250 |
| Base | |
| Status | PRD/A |
| Elec. spec. | 34WGW530 |
| Layout | 34LYM250 |
| Eff. date | 09-18-2023 |
| CD Diagram | CD0007 |
| Poles | 06 |
| Leads | 12#18 |
| Proprietary | False |
| Created date | 06-17-2013 |

| | |
|-------------------------------|-----------------------------|
| High Voltage Full Load Amps | 0.9 a |
| Insulation Class | B |
| Inverter Code | Not Inverter |
| KVA Code | K |
| Lifting Lugs | No Lifting Lugs |
| Locked Bearing Indicator | No Locked Bearing |
| Motor Lead Exit | Terminal Panel Or Lead Hole |
| Motor Lead Quantity/Wire Size | 12 @ 18 AWG |
| Motor Lead Termination | Flying Leads |
| Motor Standards | NEMA |
| Motor Type | 3414M |
| Mounting Arrangement | F1 |
| Number of Poles | 6 |
| Overall Length | 11.34 IN |
| Power Factor | 51 |
| Product Family | General Purpose |
| Pulley End Bearing Type | Ball |
| Pulley Face Code | Resilient Mount |
| Pulley Shaft Indicator | Standard |
| Rodent Screen | None |
| RoHS Status | ROHS COMPLIANT |
| Service Factor | 1.25 |
| Shaft Diameter | 0.500 IN |
| Shaft Extension Location | Pulley End |
| Shaft Ground Indicator | No Shaft Grounding |
| Shaft Rotation | Reversible |
| Shaft Slinger Indicator | No Slinger |
| Speed | 1140 rpm |
| Speed Code | Single Speed |
| Starting Method | Direct on line |
| Thermal Device - Bearing | None |
| Thermal Device - Winding | None |
| Vibration Sensor Indicator | No Vibration Sensor |
| Winding Thermal 1 | Automatic Thermal Overload |

Winding Thermal 1 Location

SB

Nameplate

| NP1257L | |
|---------------------|---|
| CAT.NO. | CHM264A |
| SPEC. | 34M250W530G1 |
| HP | .33 |
| VOLTS | 230/460 |
| AMP | 1.8/.9 |
| RPM | 1140 |
| FRAME | 48YZ HZ 60 PH 3 |
| SER.F. | 1.25 CODE K DES B CL B |
| NEMA-NOM-EFF | 70 PF 51 |
| RATING | 40C AMB-CONT |
| CC | |
| DE | 6203 ODE 6203 |
| ENCL | TEAO SN |
| | SFA 1.9/0.95 |

AC Induction Motor Performance Data

Record # 42465

Typical performance - not guaranteed values

| Winding: 34WGW530-R007 | | Type: 3414M | | Enclosure: TEAO | |
|-------------------------------|------------------------|--------------------|---|---------------------------|--|
| Nameplate Data | | | 230 V, 60 Hz: Low Voltage Connection | | |
| Rated Output (HP) | .33 AIR OVER | | Full Load Torque | 1.5 LB-FT | |
| Volts | 230/460 | | Start Configuration | direct on line | |
| Full Load Amps | 1.8/.9 | | Breakdown Torque | 5.5 LB-FT | |
| R.P.M. | 1140 | | Pull-up Torque | 4.2 LB-FT | |
| Hz | 60 Phase | 3 | Locked-rotor Torque | 4.45 LB-FT | |
| NEMA Design Code | B KVA Code | K | Starting Current | 7.3 A | |
| Service Factor (S.F.) | 1.25 | | No-load Current | 1.5 A | |
| NEMA Nom. Eff. | 70 Power Factor | 51 | Line-line Res. @ 25°C | 14.57 Ω | |
| Rating - Duty | 40C AMB-CONT | | Temp. Rise @ Rated Load | | |
| S.F. Amps | 1.9/0.95 | | Temp. Rise @ S.F. Load | | |
| | | | Locked-rotor Power Factor | 66 | |
| | | | Rotor inertia | 0.0333 LB-FT ² | |

Load Characteristics 230 V, 60 Hz, 0.33 HP

| % of Rated Load | 25 | 50 | 75 | 100 | 125 | 150 | S.F. |
|------------------------|-----------|-----------|-----------|------------|------------|------------|-------------|
| Power Factor | 19 | 30 | 42 | 51 | 58 | 64 | 58 |
| Efficiency | 44 | 58 | 66 | 70 | 71 | 72 | 71 |
| Speed | 1185 | 1170 | 1155 | 1135 | 1120 | 1095 | 1120 |
| Line amperes | 1.5 | 1.6 | 1.7 | 1.8 | 1.9 | 2.1 | 1.9 |

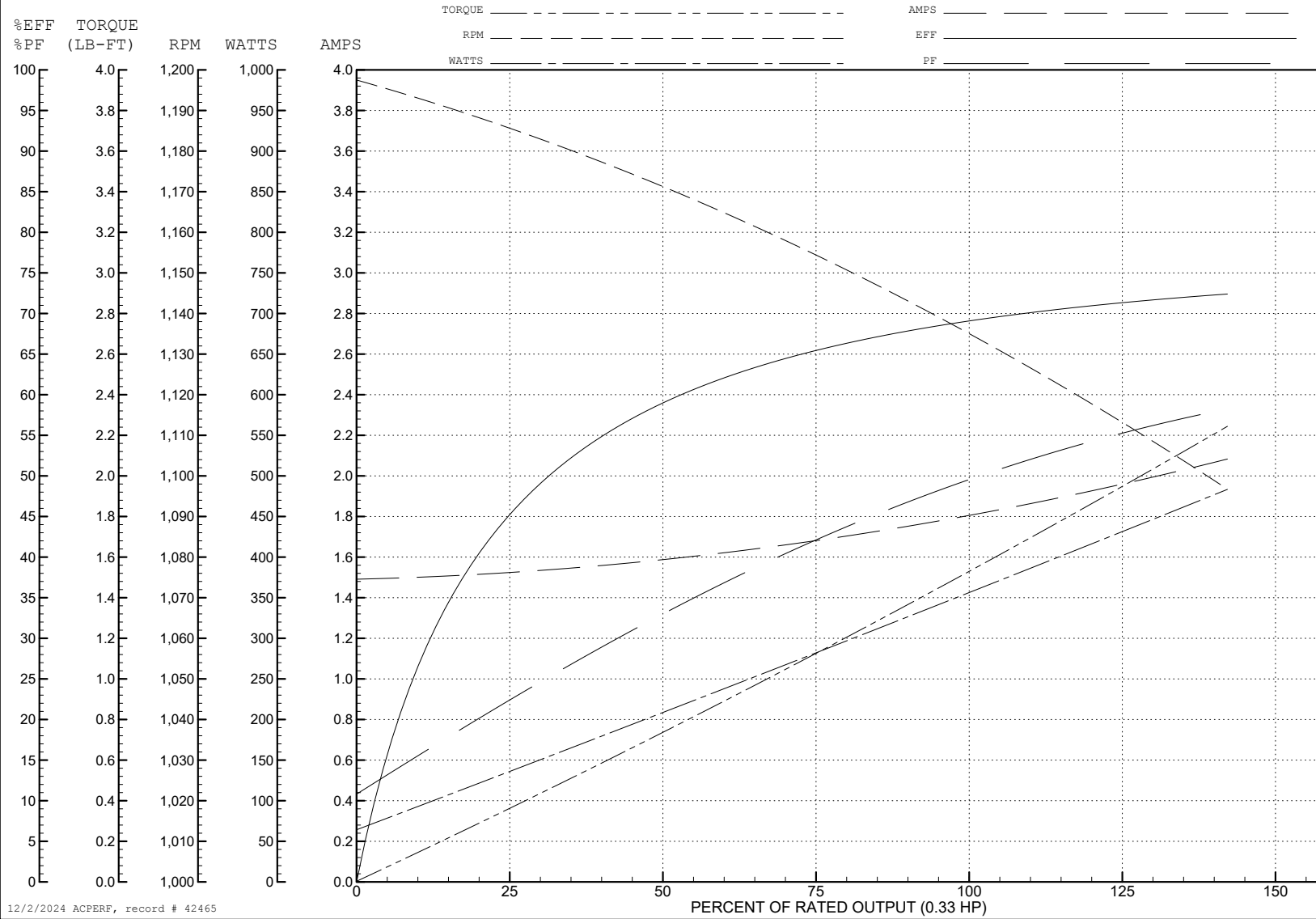
ABB Motors and Mechanical Inc.

WINDING # 34WGW530

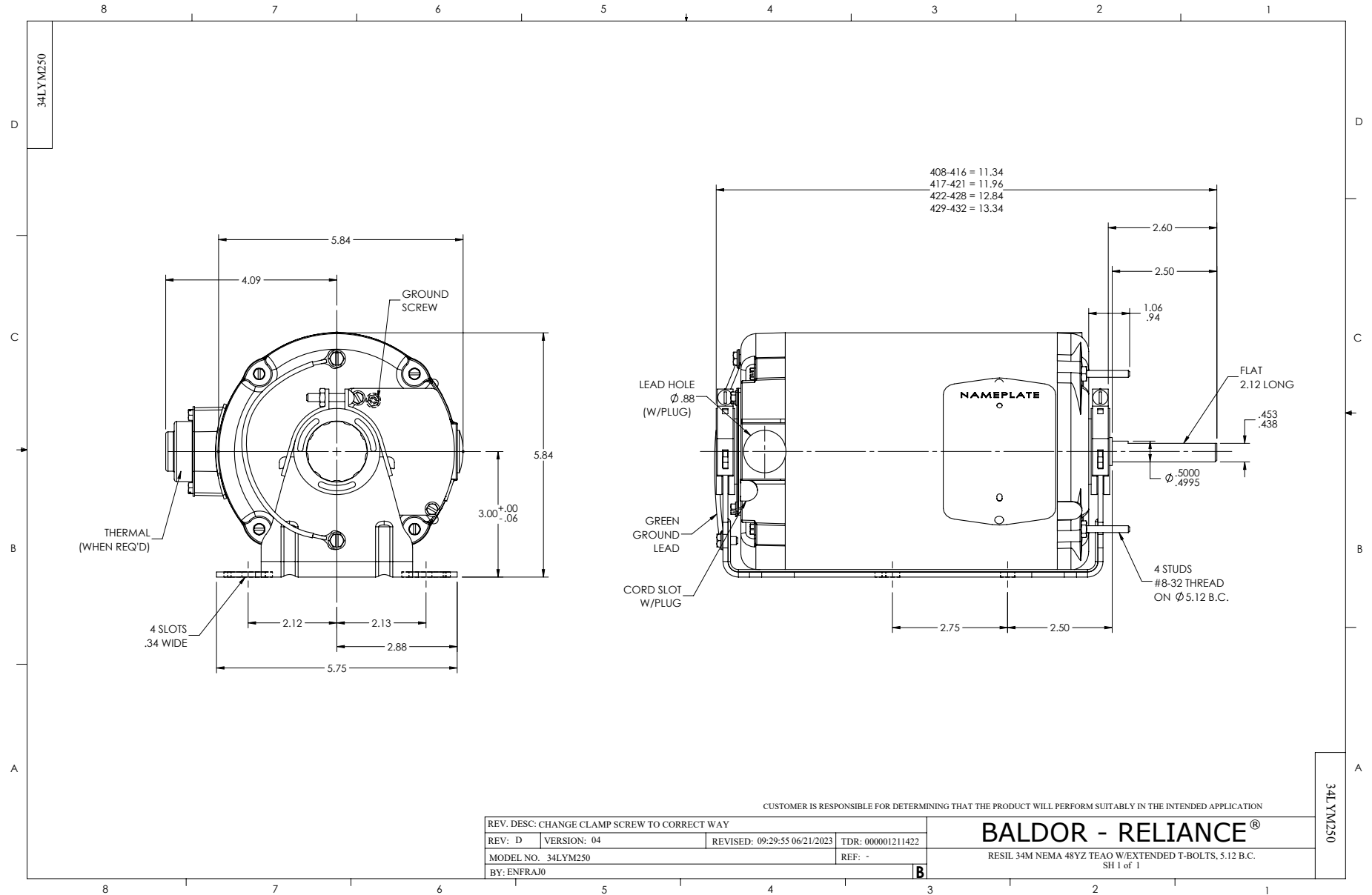
0.33 HP 3 PH 60 HZ 1140 RPM 230 V 3414M

Typical performance - not guaranteed values.

TORQUES (LB-FT): PO=5.5 PU=4.2 LR=4.45 LRA=7.3



12/2/2024 ACPERF, record # 42465



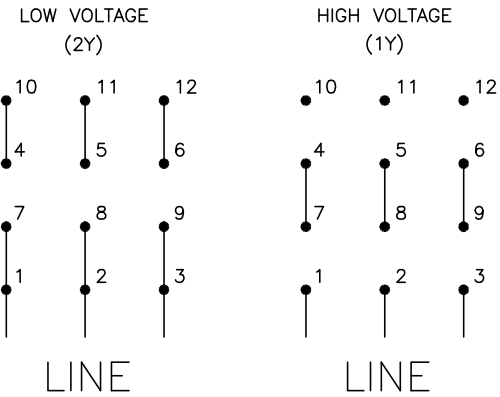
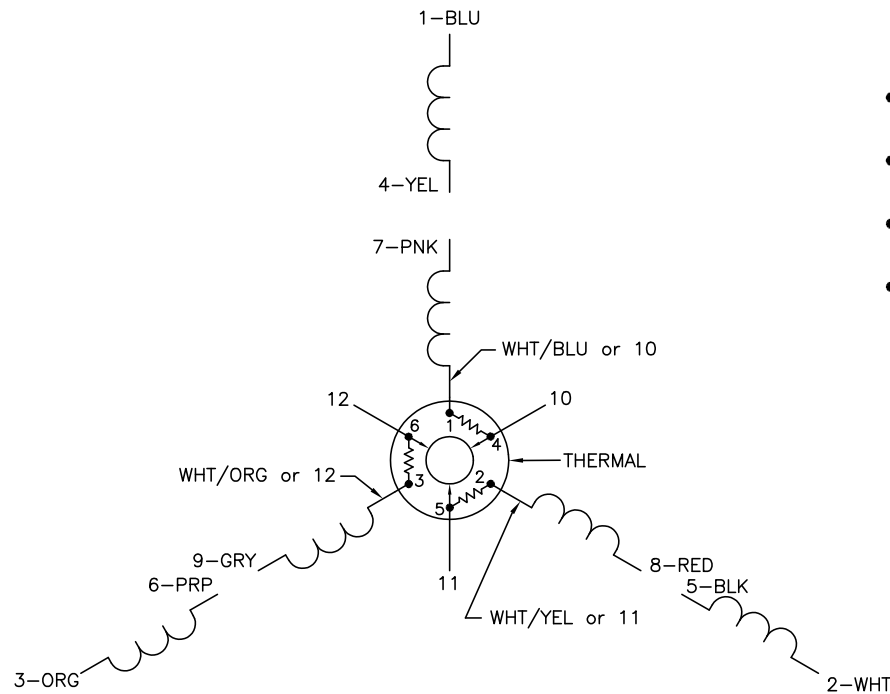
CUSTOMER IS RESPONSIBLE FOR DETERMINING THAT THE PRODUCT WILL PERFORM SUITABLY IN THE INTENDED APPLICATION

| | | | |
|--|-------------|------------------------------|-------------------|
| REV. DESC: CHANGE CLAMP SCREW TO CORRECT WAY | | | |
| REV: D | VERSION: 04 | REVISED: 09:29:55 06/21/2023 | TDR: 000001211422 |
| MODEL NO. 34LYM250 | | REF: - | |
| BY: ENFRAJ0 | | B | |

BALDOR - RELIANCE®
RESIL 34M NEMA 48YZ TEAO W/EXTENDED T-BOLTS, 5.12 B.C.
SH 1 of 1

34LYM250

CD0007



- NOTES:
1. INTERCHANGE ANY TWO LINE LEADS TO REVERSE ROTATION.
 2. ACTUAL NUMBER OF INTERNAL PARALLEL CIRCUITS MAY VARY.
 3. LEAD COLORS ARE OPTIONAL. LEADS MUST ALWAYS BE NUMBERED AS SHOWN.

CD0007

| | | | |
|----------------------------------|---------|------------------------|--------------|
| REV. DESC: ADDED "CK" PLANT CODE | | | |
| REV. LTR: E | BY: EAH | REVISED: 05/06/99 17:1 | TDR: 0181040 |
| L00000 | | FILE: AAA00008370 | MDL: - |
| | | MTL: - | |

BALDOR ELECTRIC Co.

3PH, DV, THERMAL, 12 LEADS