

BALDOR • RELIANCE

Customer information packet

CHC565A

1HP, 1075RPM, 1PH, 60HZ, 56, 3535C, TEAO, F1, N

Class - None

Division - Not Applicable

Specifications

Enclosure	TEAO
Frame	56
Frame Material	Steel
Frequency	60.00 Hz
Motor Letter Type	Oil Capacitor Start and Run
Output @ Frequency	1.000 HP @ 60 HZ
Phase	1
Synchronous Speed @ Frequency	1200 RPM @ 60 HZ
Voltage @ Frequency	115.0 V @ 60 HZ 230.0 V @ 60 HZ
XP Class and Group	None
XP Division	Not Applicable
Agency Approvals	CSA UR
Ambient Temperature	40 °C
Auxillary Box	No Auxillary Box
Auxillary Box Lead Termination	None
Base Indicator	Resilient
Bearing Grease Type	Polyrex EM (-20F +300F)
Blower	None
Current @ Voltage	10.600 A @ 115.0 V 5.300 A @ 230.0 V
Drip Cover	No Drip Cover
Duty Rating	CONT
Efficiency @ 100% Load	62.0 %
Electrically Isolated Bearing	Not Electrically Isolated
Feedback Device	NO FEEDBACK
Front Face Code	Terminal Panel
Front Shaft Indicator	None
Heater Indicator	No Heater
High Voltage Full Load Amps	5.3 a
Insulation Class	F

Part detail

Revision	E
Type	AC
Mech. spec.	35E3460
Base	
Status	PRD/A
Elec. spec.	35WGL464
Layout	35LYE3460
Eff. date	09-17-2023
CD Diagram	CD0381
Poles	06
Leads	6#18,1#14 #1TH
Proprietary	False
Created date	01-20-2016

Inverter Code	Not Inverter
KVA Code	B
Lifting Lugs	No Lifting Lugs
Locked Bearing Indicator	No Locked Bearing
Motor Lead Exit	Terminal Panel
Motor Lead Quantity/Wire Size	6 @ 18 AWG
Motor Lead Termination	Flying Leads
Motor Standards	NEMA
Motor Type	3535C
Mounting Arrangement	F1
Number of Poles	6
Overall Length	13.30 IN
Power Factor	90
Product Family	General Purpose
Pulley End Bearing Type	Sealed Bearing
Pulley Face Code	Resilient Mount
Pulley Shaft Indicator	Standard
Rodent Screen	None
RoHS Status	ROHS COMPLIANT
Service Factor	1.00
Shaft Diameter	0.625 IN
Shaft Extension Location	Pulley End
Shaft Ground Indicator	No Shaft Grounding
Shaft Rotation	Reversible
Shaft Slinger Indicator	No Slinger
Speed	1075 rpm
Speed Code	Single Speed
Starting Method	Direct on line
Thermal Device - Bearing	None
Thermal Device - Winding	None
Vibration Sensor Indicator	No Vibration Sensor
Winding Thermal 1	Automatic Thermal Overload
Winding Thermal 1 Location	SB
Winding Thermal 2	None

Nameplate

NP1257L									
CAT.NO.	CHC565A								
SPEC.	35E3460L464G1								
HP	1								
VOLTS	115/230								
AMP	10.6/5.3								
RPM	1075								
FRAME	56				HZ	60		PH	1
SER.F.	1.00	CODE	B	DES	-	CL	F		
NEMA-NOM-EFF	62	PF	90						
RATING	40C AMB-CONT								
CC									
DE	6203	ODE	6203						
ENCL	TEAO	SN							

AC Induction Motor Performance Data

Record # 54664

Typical performance - not guaranteed values

Winding: 35WGL464-R001		Type: 3535C		Enclosure: TEAO	
Nameplate Data			115 V, 60 Hz: Low Voltage Connection		
Rated Output (HP)	1	Full Load Torque	4.8 LB-FT		
Volts	115/230	Start Configuration	direct on line		
Full Load Amps	10.6/5.3	Breakdown Torque	7 LB-FT		
R.P.M.	1075	Pull-up Torque	1.1 LB-FT		
Hz	60 Phase	1	Locked-rotor Torque	1.2 LB-FT	
NEMA Design Code	- KVA Code	B	Starting Current	28 A	
Service Factor (S.F.)		1	No-load Current	2.84 A	
NEMA Nom. Eff.	62 Power Factor	90	Line-line Res. @ 25°C	1.18 Ω A Ph 13.3 Ω B Ph	
Rating - Duty	40C AMB-CONT		Temp. Rise @ Rated Load	96°C	
			Locked-rotor Power Factor	72.6	
			Rotor inertia	0.207 LB-FT ²	

Load Characteristics 115 V, 60 Hz, 1 HP

% of Rated Load	25	50	75	100
Power Factor	80	87	90	90
Efficiency	53.9	68.4	70.7	66.7
Speed	1178	1154	1122	1075
Line amperes	4.04	5.74	7.86	10.6

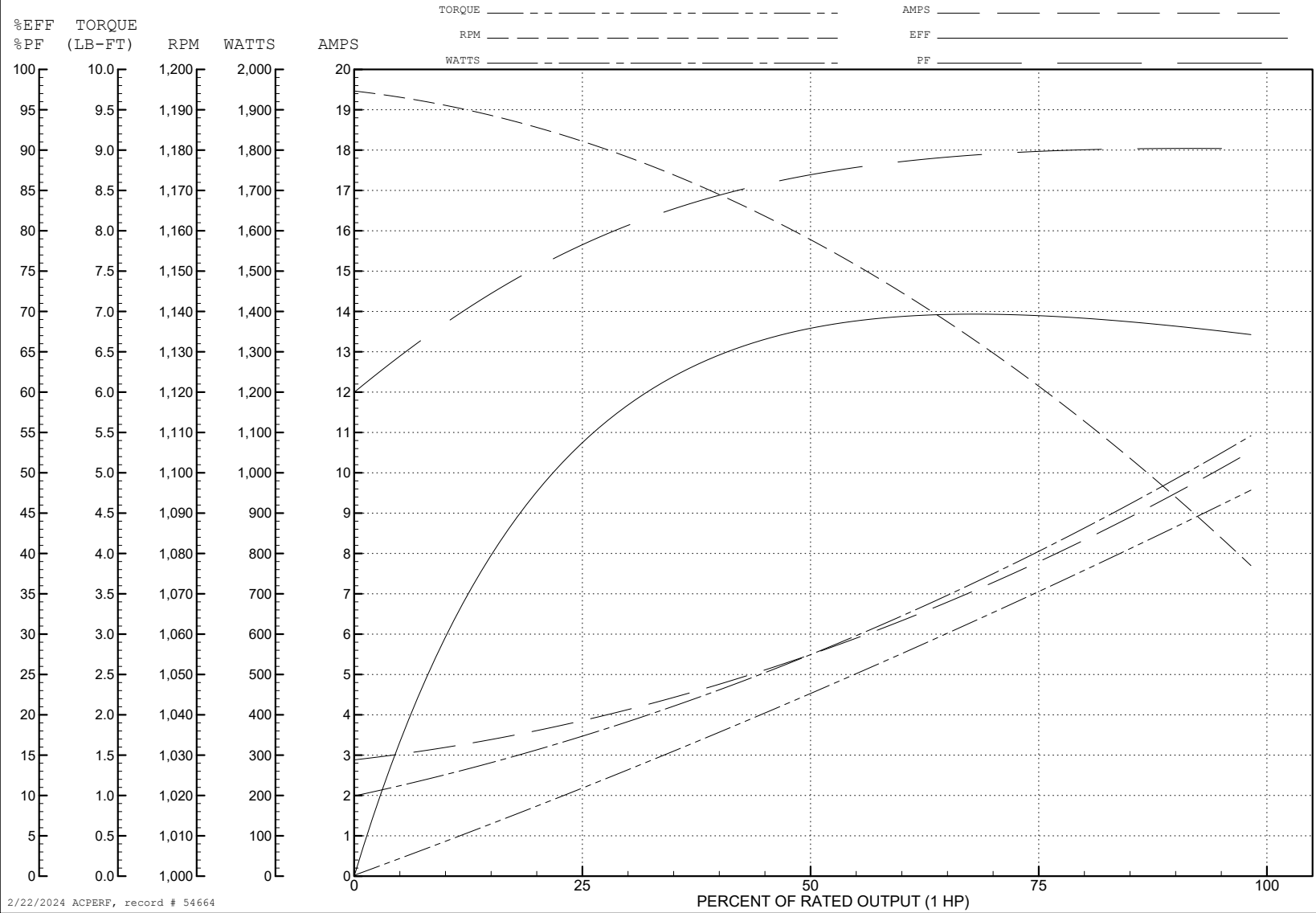
ABB Motors and Mechanical Inc.

WINDING # 35WGL464

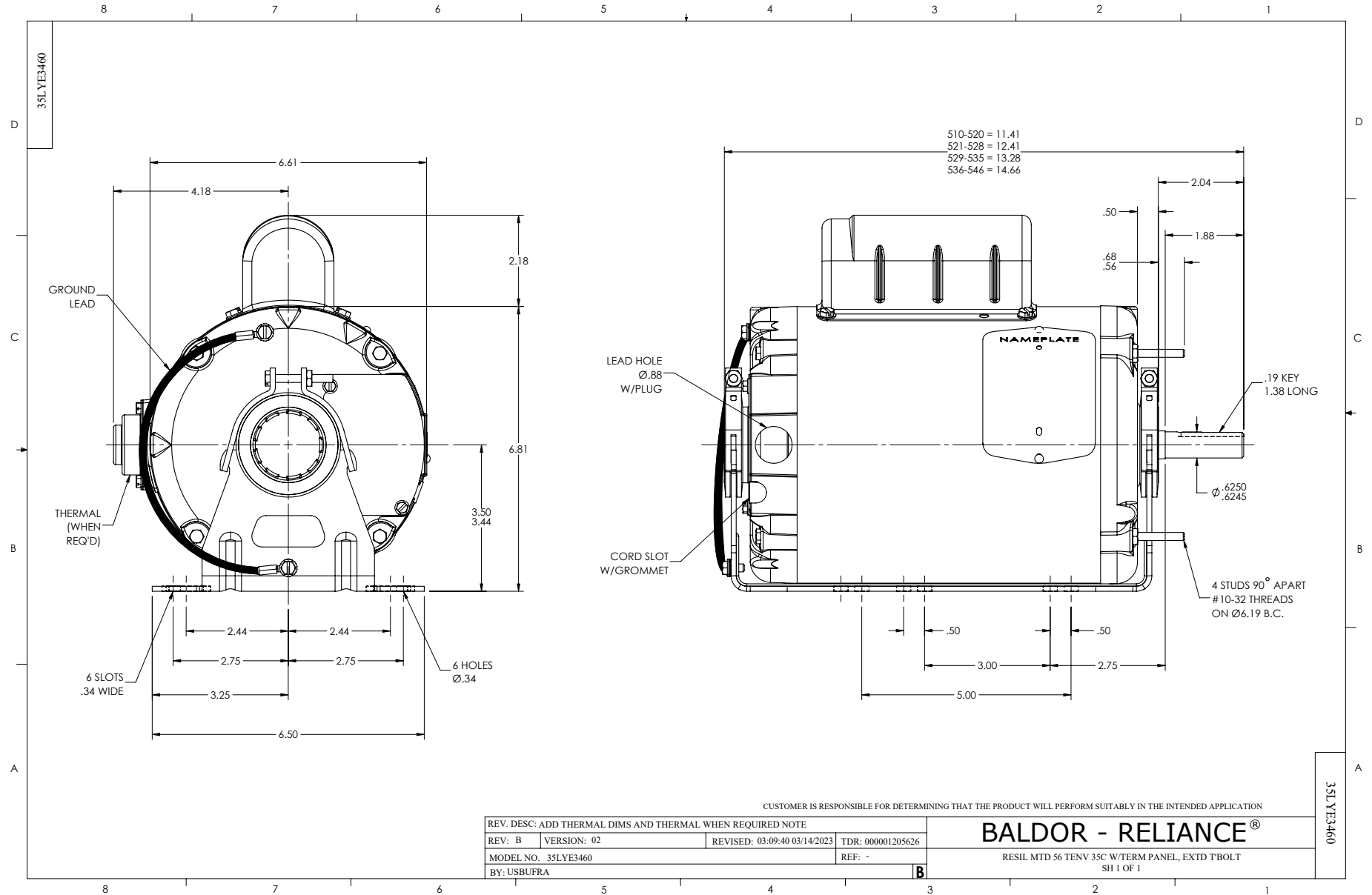
Typical performance - not guaranteed values.

1 HP 1 PH 60 HZ 1075 RPM 115 V 3535C

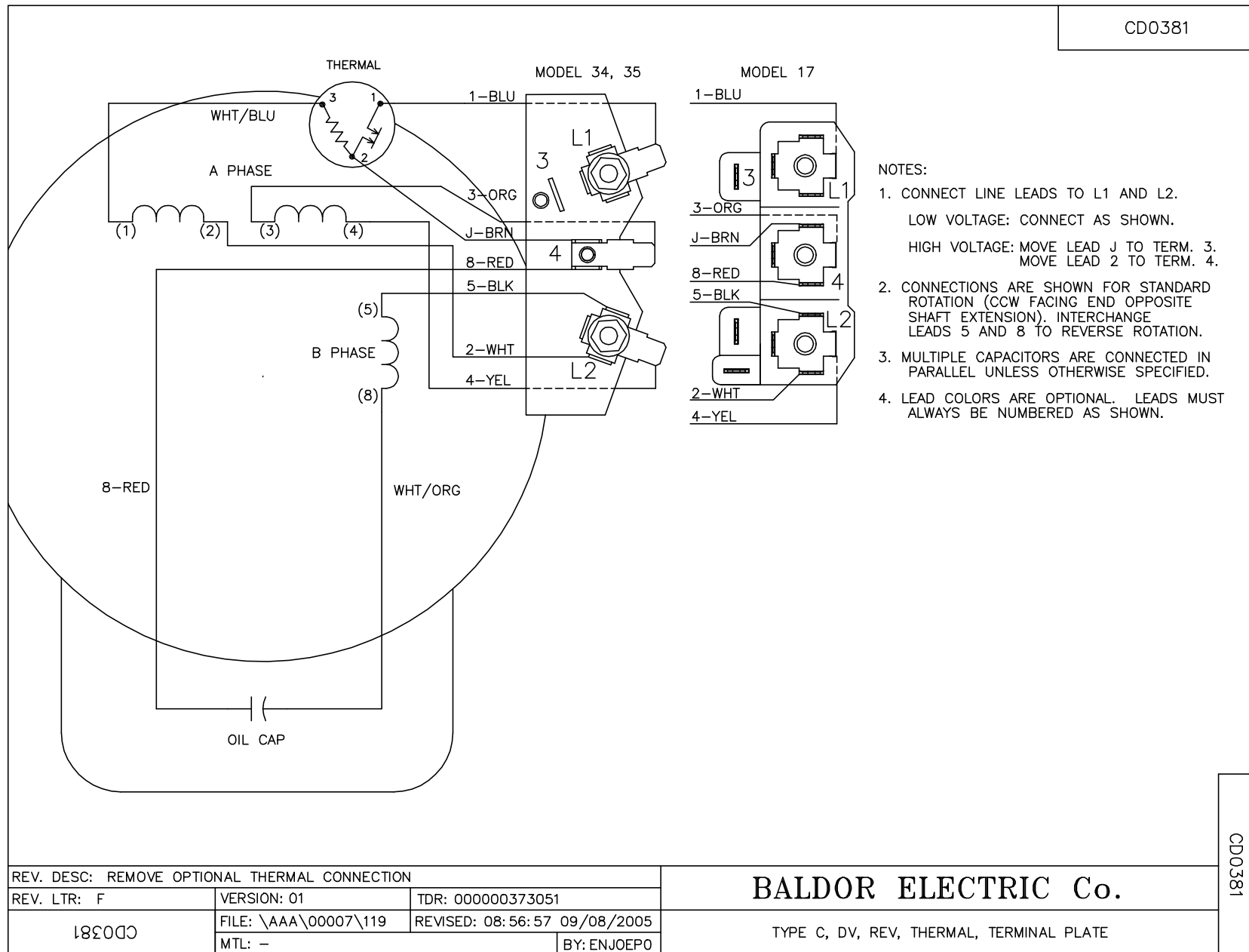
TORQUES (LB-FT): PO=7 PU=1.1 LR=1.2 LRA=28



2/22/2024 ACPERF, record # 54664



CD0381



REV. DESC: REMOVE OPTIONAL THERMAL CONNECTION		
REV. LTR: F	VERSION: 01	TDR: 000000373051
CD0381	FILE: \AAA\00007\119	REVISED: 08:56:57 09/08/2005
	MTL: -	BY: ENJOEPO

BALDOR ELECTRIC Co.

TYPE C, DV, REV, THERMAL, TERMINAL PLATE

CD0381