

**BALDOR • RELIANCE**

---

# Customer information packet

## CHC3526A

.5 AIR OVERHP, 850RPM, 1PH, 60HZ, 56Z, 3534C

Class - None

Division - Not Applicable

## Specifications

Enclosure	TEAO
Frame	56Z
Frame Material	Steel
Frequency	60.00 Hz
Haz Area Class and Group	None
Haz Area Division	Not Applicable
Motor Letter Type	Oil Capacitor Start and Run
Output @ Frequency	.500 HP @ 60 HZ
Phase	1
Synchronous Speed @ Frequency	900 RPM @ 60 HZ
Voltage @ Frequency	115.0 V @ 60 HZ 230.0 V @ 60 HZ
Agency Approvals	C UR US
Ambient Temperature	40 °C
Auxillary Box	No Auxillary Box
Auxillary Box Lead Termination	None
Base Indicator	Resilient
Bearing Grease Type	Polyrex EM (-20F +300F)
Blower	None
Current @ Voltage	4.100 A @ 230.0 V 8.200 A @ 115.0 V
Design Code	-
Drip Cover	No Drip Cover
Duty Rating	CONT
Efficiency @ 100% Load	57.5 %
Electrically Isolated Bearing	Not Electrically Isolated
Feedback Device	NO FEEDBACK
Front Shaft Indicator	None
Heater Indicator	No Heater
High Voltage Full Load Amps	4.1 a
Insulation Class	F
Inverter Code	Not Inverter

## Part detail

Revision	B
Type	AC
Mech. spec.	35H317
Base	
Status	PRD/A
Elec. spec.	35WGZ931
Layout	35LYH317
Eff. date	09-30-2024
CD Diagram	CD0381
Poles	08
Leads	6#18,1#16 #1TH
Proprietary	False
Created date	12-19-2022

IP Rating	NONE
KVA Code	F
Lifting Lugs	No Lifting Lugs
Locked Bearing Indicator	No Locked Bearing
Motor Lead Quantity/Wire Size	6 @ 18 AWG
Motor Lead Termination	Flying Leads
Motor Standards	NEMA
Motor Type	3534C
Mounting Arrangement	F1
Number of Poles	8
Overall Length	14.40 IN
Power Factor	68
Product Family	General Purpose
Pulley End Bearing Type	Sealed Bearing
Pulley Face Code	Resilient Mount
Pulley Shaft Indicator	Standard
Rodent Screen	None
Service Factor	1.00
Shaft Diameter	0.625 IN
Shaft Ground Indicator	No Shaft Grounding
Shaft Rotation	Reversible: Connected Standard
Shaft Slinger Indicator	No Slinger
Speed	850 rpm
Speed Code	Single Speed
Starting Method	Direct on line
Thermal Device - Bearing	None
Thermal Device - Winding	None
Vibration Sensor Indicator	No Vibration Sensor
Winding Thermal 1	Automatic Thermal Overload
Winding Thermal 1 Location	SB
Winding Thermal 2	None

**Nameplate**

<b>NP1280L</b>									
<b>CAT.NO.</b>	CHC3526A								
<b>SPEC.</b>	35H317Z931								
<b>HP</b>	.5 AIR OVER								
<b>VOLTS</b>	115/230								
<b>AMP</b>	8.2/4.1								
<b>RPM</b>	850								
<b>FRAME</b>	56Z	<b>HZ</b>	60	<b>PH</b>	1				
<b>SER.F.</b>	1.00	<b>CODE</b>	F	<b>DES</b>	-	<b>CL</b>	F		
<b>NEMA-NOM-EFF</b>	57.5	<b>PF</b>	68						
<b>RATING</b>	40C AMB-CONT								
<b>CC</b>									
<b>DE</b>	6203	<b>ODE</b>	6203						
<b>ENCL</b>	TEAO	<b>SN</b>							

**AC Induction Motor Performance Data**

Record # 108416

Typical performance - not guaranteed values

Winding: 35WZ931-R001		Type: 3534C	Enclosure: TEAO	
<b>Nameplate Data</b>			<b>230 V, 60 Hz: High Voltage Connection</b>	
Rated Output (HP)	.5 AIR OVER	Full Load Torque	3.187 LB-FT	
Volts	115/230	Start Configuration	direct on line	
Full Load Amps	8.2/4.1	Breakdown Torque	5.34 LB-FT	
R.P.M.	850	Pull-up Torque	0.883 LB-FT	
Hz	60 Phase	Locked-rotor Torque	1.02 LB-FT	
NEMA Design Code	- KVA Code	Starting Current	11.5 A	
Service Factor (S.F.)		No-load Current	3.24 A	
NEMA Nom. Eff.	57.5 Power Factor	Line-line Res. @ 25°C	7.3869 Ω A Ph 23.414 Ω B Ph	
Rating - Duty	40C AMB-CONT	Temp. Rise @ Rated Load		

**Load Characteristics 230 V, 60 Hz, 0.5 HP**

% of Rated Load	25	50	75	100	125	150
Power Factor	39	50	60	68	74	80
Efficiency	33.6	49.4	56.8	59.4	58.4	52.3
Speed	887.5	877	864.5	849.2	829.9	794.6
Line amperes	3.28	3.44	3.73	4.14	4.69	5.6

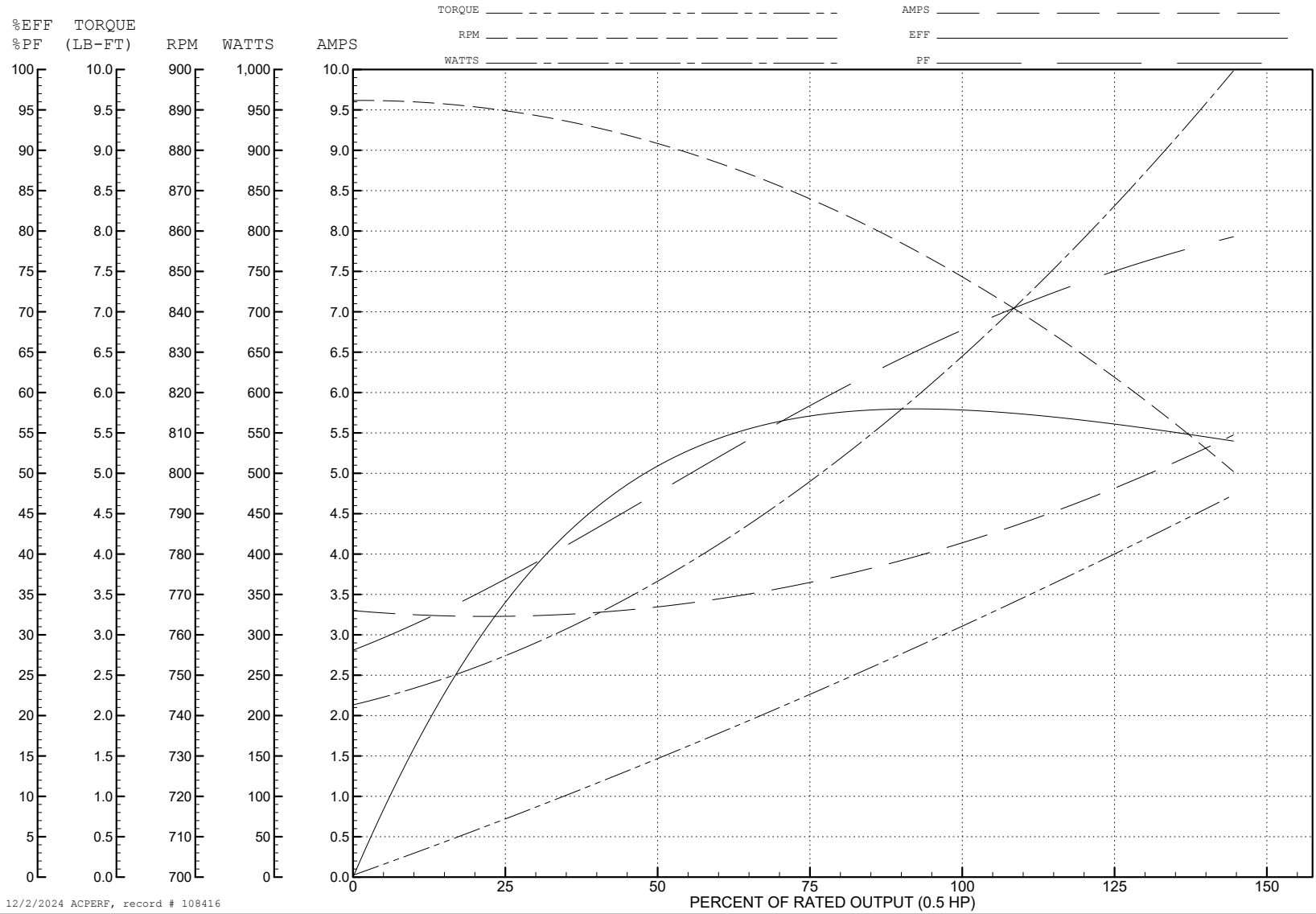
ABB Motors and Mechanical Inc.

WINDING # 35WGZ931

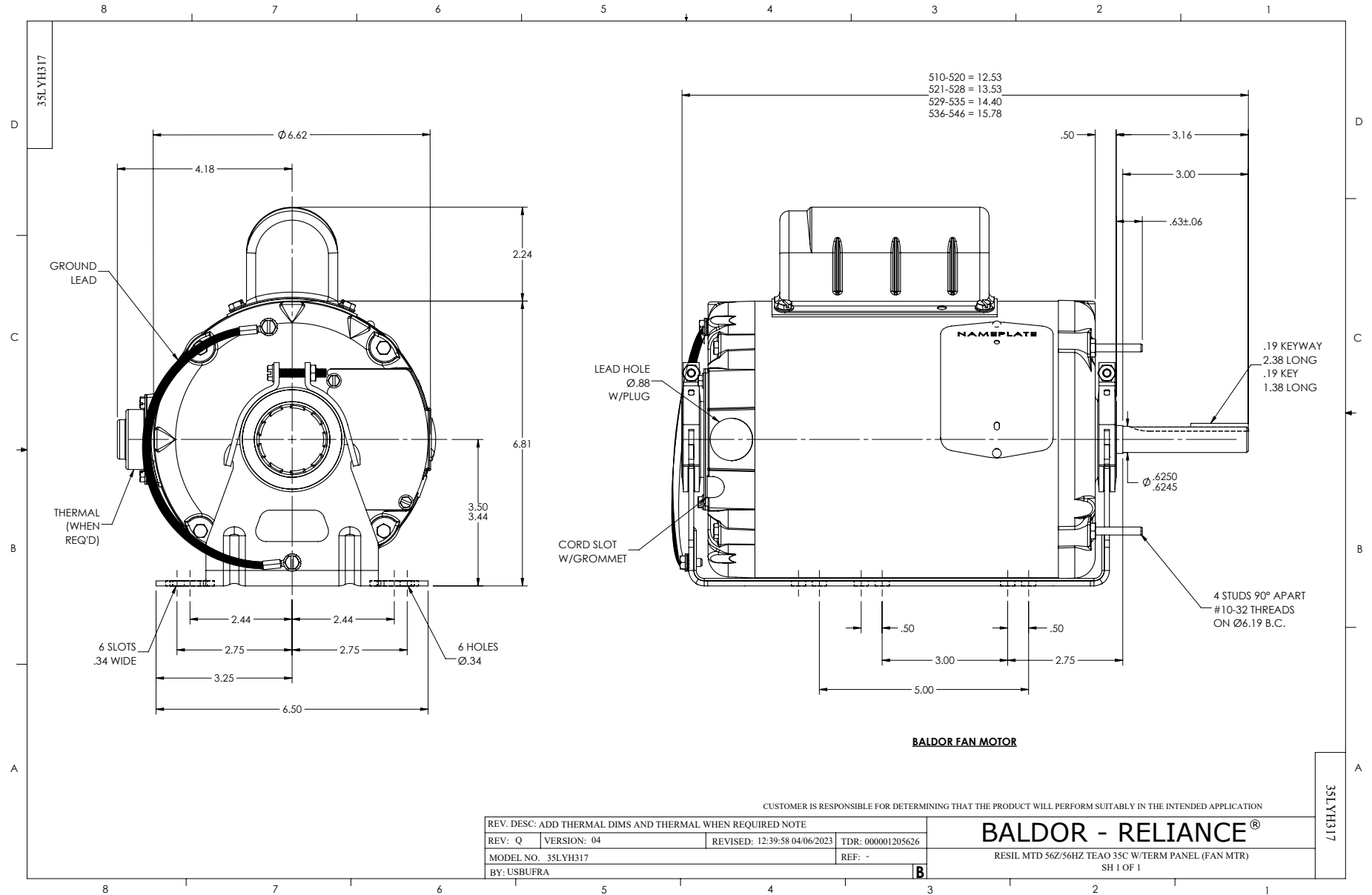
0.5 HP 1 PH 60 HZ 850 RPM 230 V 3534C

Typical performance - not guaranteed values.

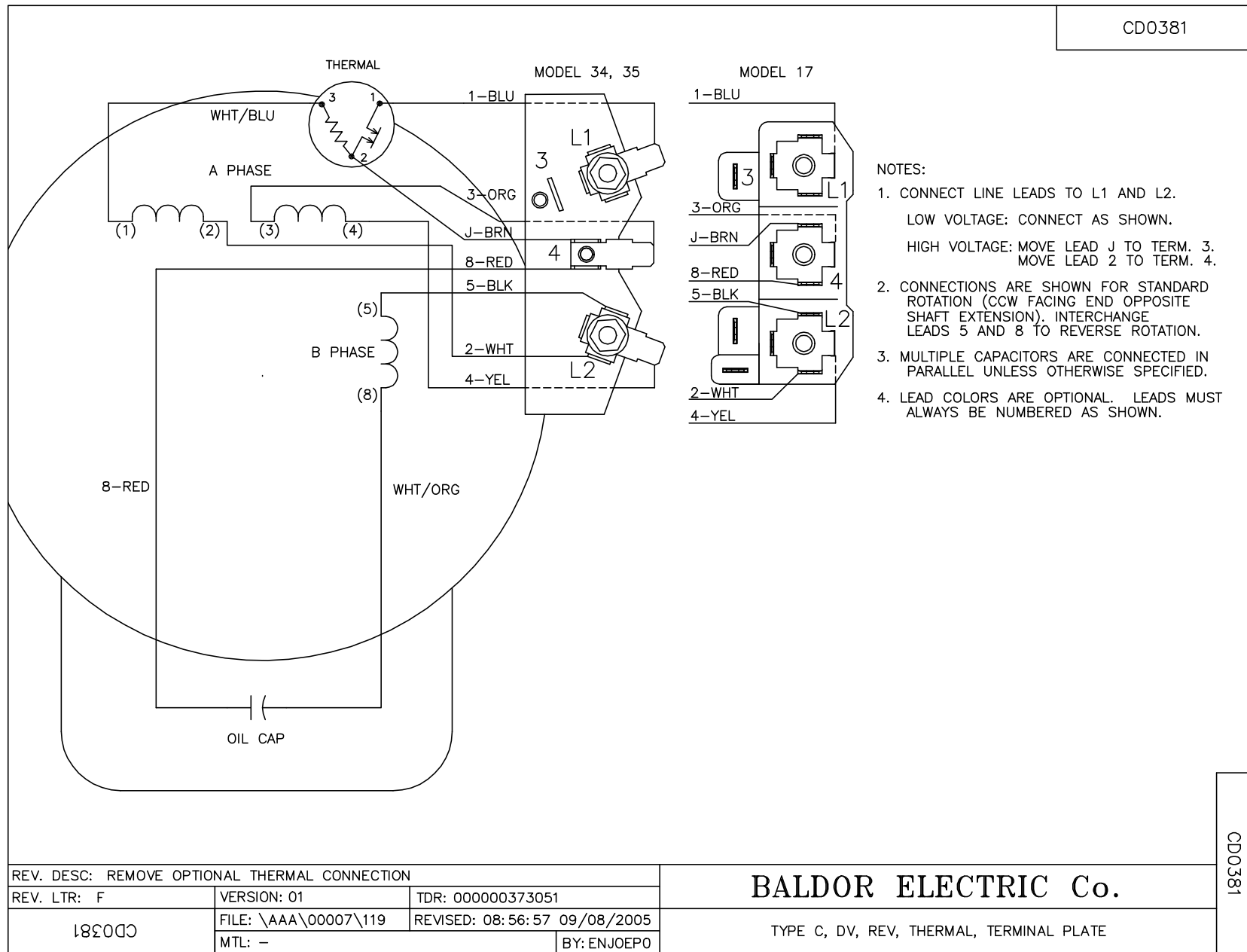
TORQUES (LB-FT): PO=5.34 PU=0.883 LR=1.02 LRA=11.5



12/2/2024 ACPERF, record # 108416



CD0381



REV. DESC: REMOVE OPTIONAL THERMAL CONNECTION		
REV. LTR: F	VERSION: 01	TDR: 000000373051
CD0381	FILE: \AAA\00007\119	REVISED: 08:56:57 09/08/2005
	MTL: -	BY: ENJOEPO

**BALDOR ELECTRIC Co.**

TYPE C, DV, REV, THERMAL, TERMINAL PLATE

CD0381