

**BALDOR • RELIANCE**

---

# Customer information packet

## CHC3525A

.5 AIR OVERHP, 1100RPM, 1PH, 60HZ, 56Z, 3528C

Class - None

Division - Not Applicable

Copyright © All product information within this document is subject to ABB Motors and Mechanical Inc. copyright © protection, unless otherwise noted.

8/10/2024 3:26:42 AM

## Specifications

Enclosure	TEAO
Frame	56Z
Frame Material	Steel
Frequency	60.00 Hz
Haz Area Class and Group	None
Haz Area Division	Not Applicable
Motor Letter Type	Oil Capacitor Start and Run
Output @ Frequency	.500 HP @ 60 HZ
Phase	1
Synchronous Speed @ Frequency	1200 RPM @ 60 HZ
Voltage @ Frequency	115.0 V @ 60 HZ 230.0 V @ 60 HZ
Agency Approvals	CSA UR
Ambient Temperature	40 °C
Auxillary Box	No Auxillary Box
Auxillary Box Lead Termination	None
Base Indicator	Resilient
Bearing Grease Type	Polyrex EM (-20F +300F)
Blower	None
Current @ Voltage	2.600 A @ 230.0 V 5.200 A @ 115.0 V
Drip Cover	No Drip Cover
Duty Rating	CONT
Efficiency @ 100% Load	70.0 %
Electrically Isolated Bearing	Not Electrically Isolated
Feedback Device	NO FEEDBACK
Front Face Code	Terminal Panel
Front Shaft Indicator	None
Heater Indicator	No Heater
High Voltage Full Load Amps	2.6 a
Insulation Class	F

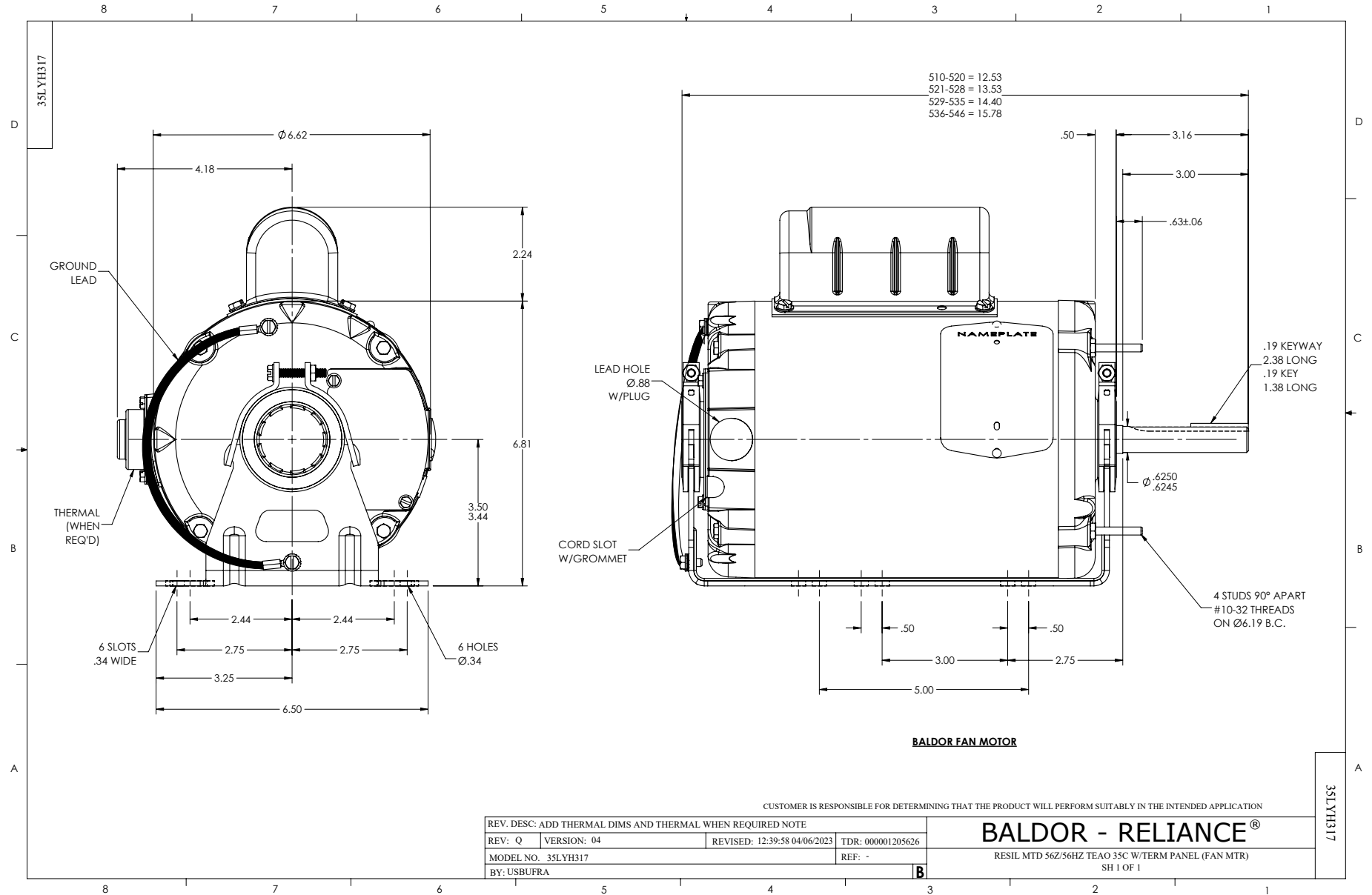
## Part detail

Revision	K
Type	AC
Mech. spec.	35H317
Base	
Status	PRD/A
Elec. spec.	35WGN460
Layout	35LYH317
Eff. date	07-25-2024
CD Diagram	CD0381
Poles	06
Leads	7#18
Proprietary	False
Created date	03-29-2012

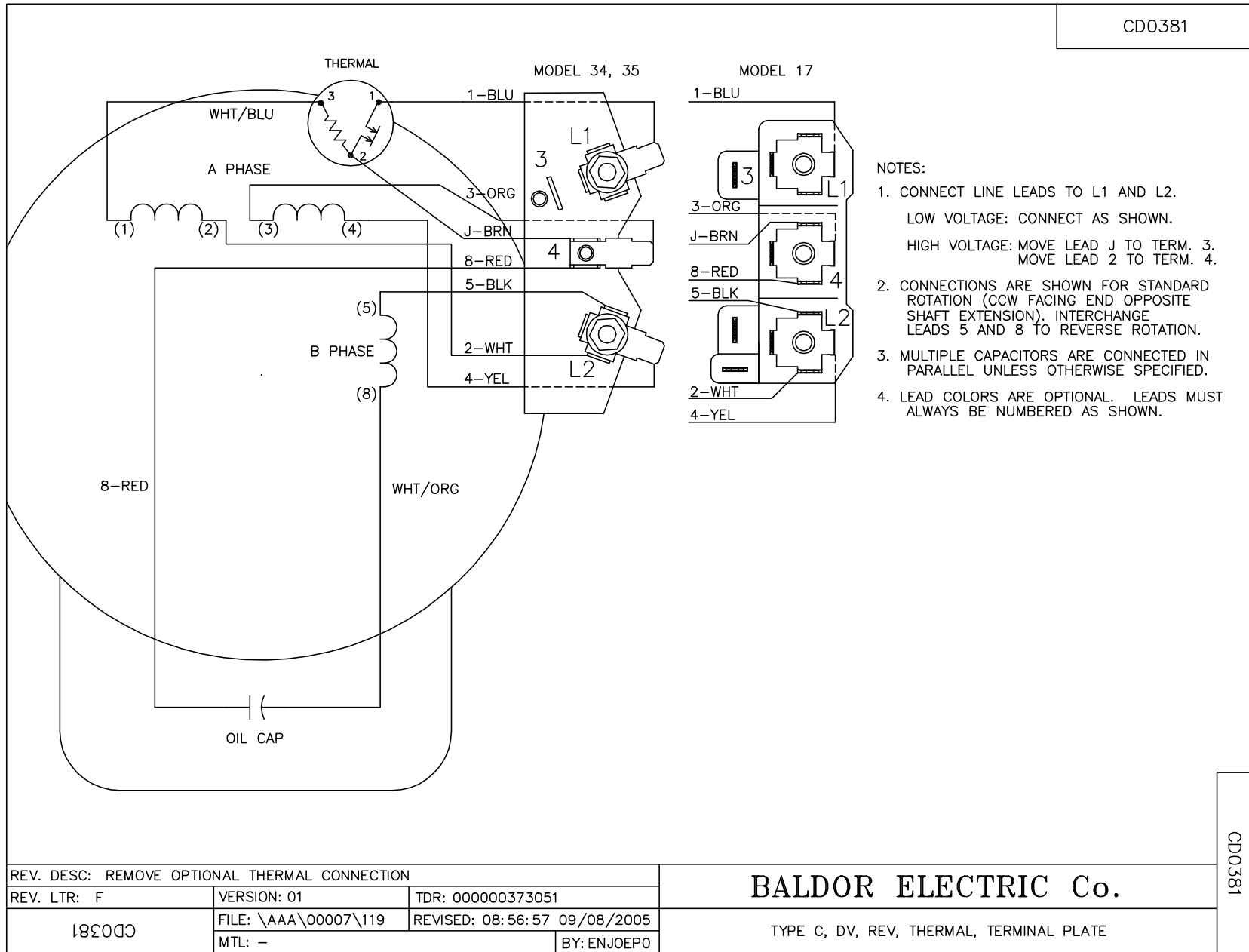
Inverter Code	Not Inverter
KVA Code	C
Lifting Lugs	No Lifting Lugs
Locked Bearing Indicator	No Locked Bearing
Motor Lead Exit	Terminal Panel
Motor Lead Quantity/Wire Size	7 @ 18 AWG
Motor Lead Termination	None
Motor Standards	NEMA
Motor Type	3528C
Mounting Arrangement	F1
Number of Poles	6
Overall Length	13.54 IN
Power Factor	92
Product Family	General Purpose
Pulley End Bearing Type	Sealed Bearing
Pulley Face Code	Resilient Mount
Pulley Shaft Indicator	Standard
Rodent Screen	None
Service Factor	1.00
Shaft Diameter	0.625 IN
Shaft Extension Location	Pulley End
Shaft Ground Indicator	No Shaft Grounding
Shaft Rotation	Reversible: Connected Standard
Shaft Slinger Indicator	No Slinger
Speed	1100 rpm
Speed Code	Single Speed
Starting Method	Direct on line
Thermal Device - Bearing	None
Thermal Device - Winding	None
Vibration Sensor Indicator	No Vibration Sensor
Winding Thermal 1	Automatic Thermal Overload
Winding Thermal 1 Location	SB
Winding Thermal 2	None

**Nameplate**

NP1280L							
<b>CAT.NO.</b>	CHC3525A						
<b>SPEC.</b>	35H317N460G1						
<b>HP</b>	.5 AIR OVER						
<b>VOLTS</b>	115/230						
<b>AMP</b>	5.2/2.6						
<b>RPM</b>	1100						
<b>FRAME</b>	56Z	<b>HZ</b>	60	<b>PH</b>	1		
<b>SER.F.</b>	1.00	<b>CODE</b>	C	<b>DES</b>	-	<b>CL</b>	F
<b>NEMA-NOM-EFF</b>	70	<b>PF</b>	92				
<b>RATING</b>	40C AMB-CONT						
<b>CC</b>							
<b>DE</b>	6203	<b>ODE</b>	6203				
<b>ENCL</b>	TEAO	<b>SN</b>					



CD0381



CD0381