

BALDOR • RELIANCE

Customer information packet

CHC3504A

.5HP, 1700RPM, 1PH, 60HZ, 56, 3420C, TEAO, F1, N

Class - None

Division - Not Applicable

Specifications

Enclosure	TEAO
Frame	56
Frame Material	Steel
Frequency	60.00 Hz
Haz Area Class and Group	None
Haz Area Division	Not Applicable
Motor Letter Type	Oil Capacitor Start and Run
Output @ Frequency	.500 HP @ 60 HZ
Phase	1
Synchronous Speed @ Frequency	1800 RPM @ 60 HZ
Voltage @ Frequency	230.0 V @ 60 HZ 115.0 V @ 60 HZ
Agency Approvals	CSA UR
Ambient Temperature	40 °C
Auxillary Box	No Auxillary Box
Auxillary Box Lead Termination	None
Base Indicator	Resilient
Bearing Grease Type	Polyrex EM (-20F +300F)
Blower	None
Current @ Voltage	5.200 A @ 115.0 V 2.800 A @ 208.0 V 2.600 A @ 230.0 V
Drip Cover	No Drip Cover
Duty Rating	CONT
Efficiency @ 100% Load	72.0 %
Electrically Isolated Bearing	Not Electrically Isolated
Feedback Device	NO FEEDBACK
Front Face Code	Resilient Mount
Front Shaft Indicator	None
Heater Indicator	No Heater
High Voltage Full Load Amps	2.6 a

Part detail

Revision	E
Type	AC
Mech. spec.	34M947
Base	
Status	PRD/A
Elec. spec.	34WGR058
Layout	34LYM947
Eff. date	07-25-2024
CD Diagram	CD0381
Poles	04
Leads	7#18
Proprietary	False
Created date	03-09-2017

Insulation Class	B
Inverter Code	Not Inverter
KVA Code	H
Lifting Lugs	No Lifting Lugs
Locked Bearing Indicator	No Locked Bearing
Motor Lead Exit	Terminal Panel
Motor Lead Quantity/Wire Size	7 @ 18 AWG
Motor Lead Termination	Flying Leads
Motor Standards	NEMA
Motor Type	3420C
Mounting Arrangement	F1
Number of Poles	4
Overall Length	11.59 IN
Power Factor	86
Product Family	General Purpose
Pulley End Bearing Type	Ball
Pulley Face Code	Resilient Mount
Pulley Shaft Indicator	Standard
Rodent Screen	None
RoHS Status	ROHS COMPLIANT
Service Factor	1.15
Shaft Diameter	0.625 IN
Shaft Extension Location	Pulley End
Shaft Ground Indicator	No Shaft Grounding
Shaft Rotation	Reversible: Connected Standard
Shaft Slinger Indicator	No Slinger
Speed	1700 rpm
Speed Code	Single Speed
Starting Method	Direct on line
Thermal Device - Bearing	None
Thermal Device - Winding	None
Vibration Sensor Indicator	No Vibration Sensor
Winding Thermal 1	Automatic Thermal Overload
Winding Thermal 1 Location	EP

Winding Thermal 2

None

Nameplate

NP1280L							
CAT.NO.	CHC3504A						
SPEC.	34M947R058G1						
HP	.5						
VOLTS	115/230						
AMP	5.2/2.6						
RPM	1700						
FRAME	56	HZ	60	PH	1		
SER.F.	1.15	CODE	H	DES	-	CL	B
NEMA-NOM-EFF	72	PF	86				
RATING	40C AMB-CONT						
CC							
DE	6203	ODE	6203				
ENCL	TEAO	SN					

AC Induction Motor Performance Data

Record # 42880

Typical performance - not guaranteed values

Winding: 34WGR058-R001			Type: 3420C			Enclosure: TEAO		
Nameplate Data				230 V, 60 Hz: High Voltage Connection				
Rated Output (HP)			.5 AIR OVER	Full Load Torque	1.54 LB-FT			
Volts			115/230	Start Configuration	direct on line			
Full Load Amps			5.2/2.6	Breakdown Torque	4.37 LB-FT			
R.P.M.			1700	Pull-up Torque	0.568 LB-FT			
Hz	60	Phase	1	Locked-rotor Torque	0.706 LB-FT			
NEMA Design Code			H	Starting Current	13.8 A			
Service Factor (S.F.)			1.15	No-load Current	1.57 A			
NEMA Nom. Eff.	72	Power Factor	86	Line-line Res. @ 25°C	5.6083 Ω A Ph 4.1514 Ω B Ph			
Rating - Duty			40C AMB-CONT	Temp. Rise @ Rated Load				

Load Characteristics 230 V, 60 Hz, 0.5 HP

% of Rated Load	25	50	75	100	125	150	S.F.
Power Factor	58	70	80	86	89	91	88
Efficiency	44.4	64.9	69.5	73.4	75.1	75.3	74.4
Speed	1785.8	1775.6	1759.8	1744.3	1725.4	1705.7	1733
Line amperes	1.67	1.87	2.25	2.64	3.09	3.57	2.91

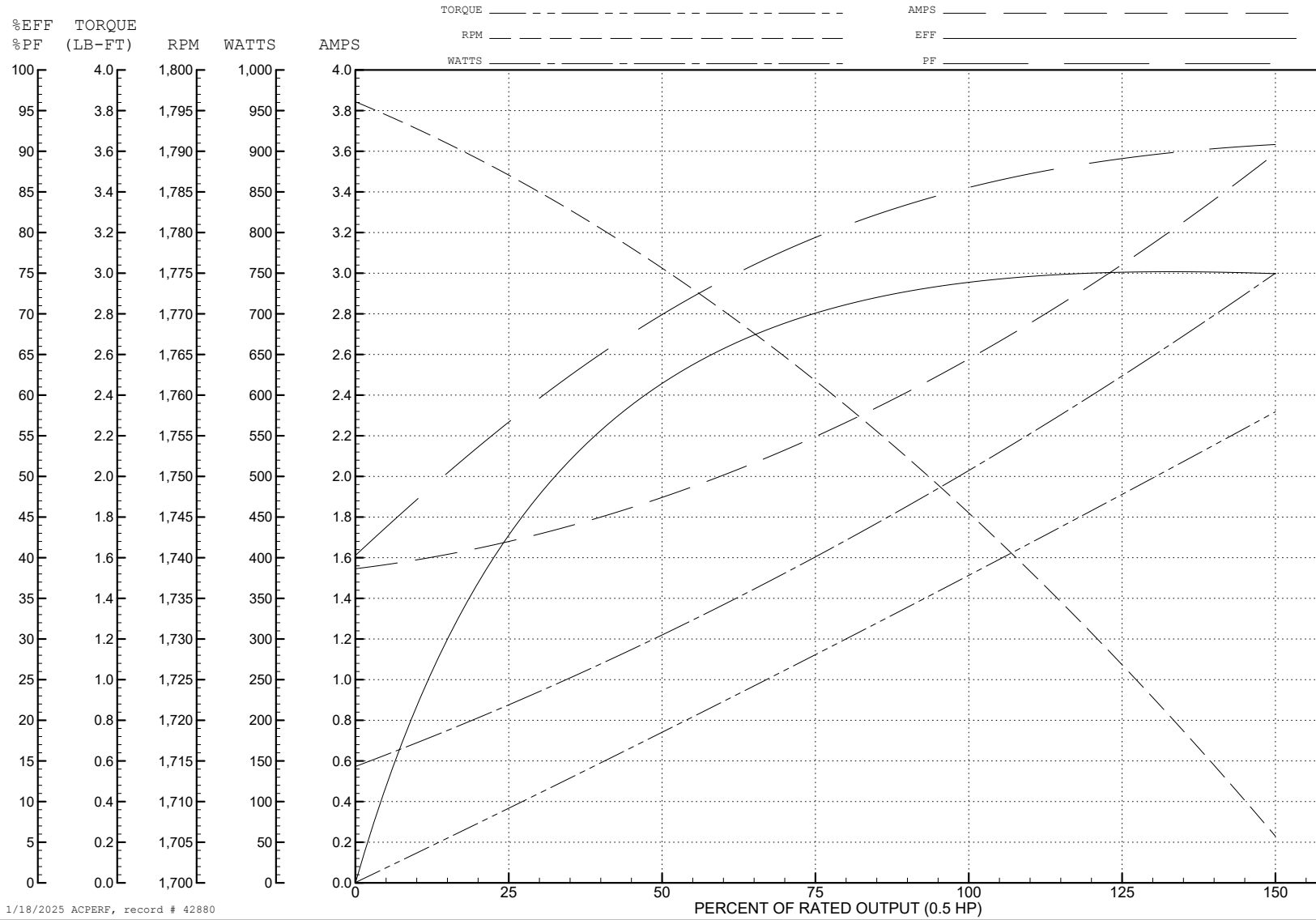
ABB Motors and Mechanical Inc.

WINDING # 34WGR058

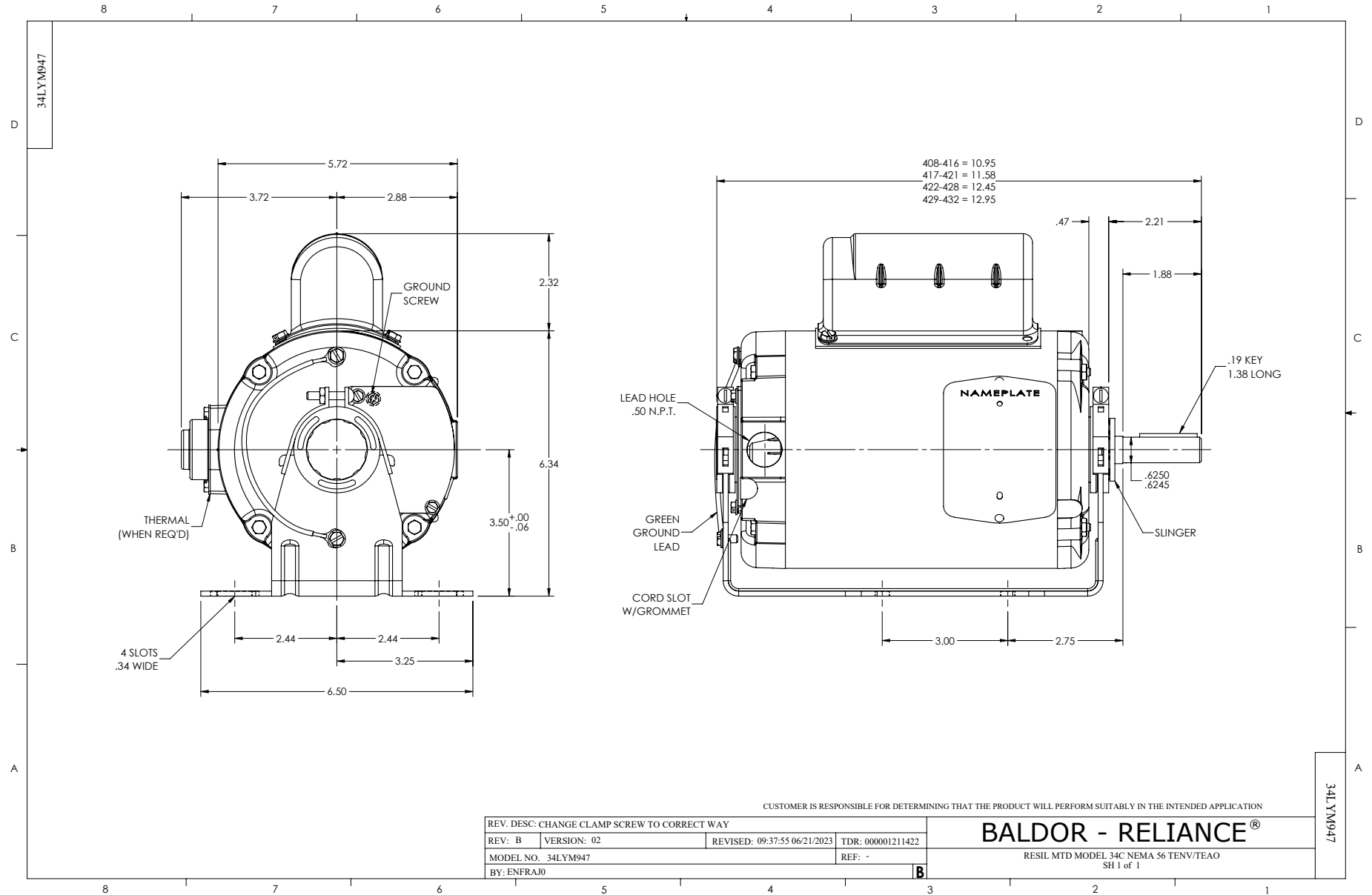
Typical performance - not guaranteed values.

0.5 HP 1 PH 60 HZ 1700 RPM 230 V 3420C

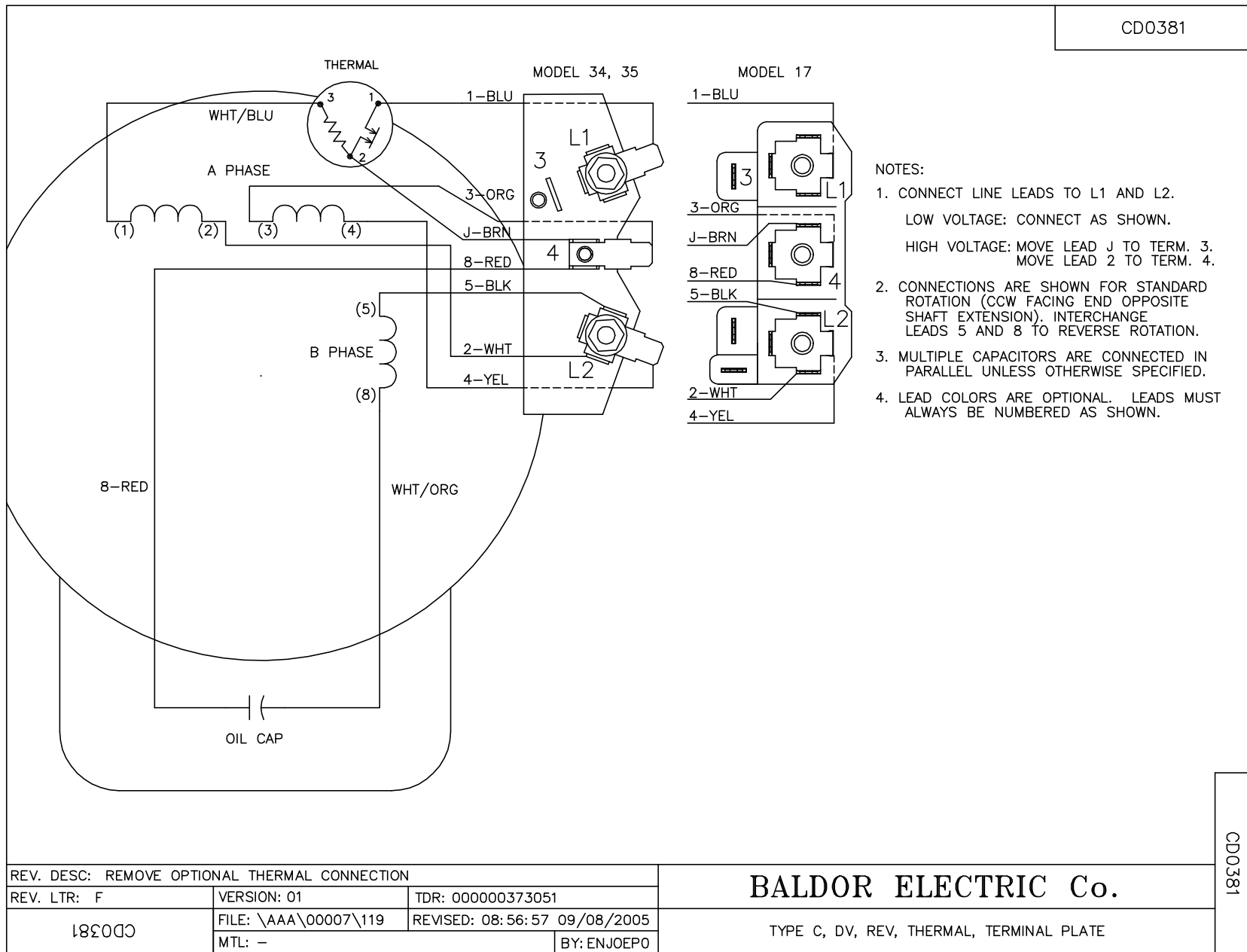
TORQUES (LB-FT): PO=4.37 PU=0.568 LR=0.706 LRA=13.8



1/18/2025 ACPERF, record # 42880



CD0381



REV. DESC: REMOVE OPTIONAL THERMAL CONNECTION		
REV. LTR: F	VERSION: 01	TDR: 000000373051
CD0381	FILE: \AAA\00007\119	REVISED: 08:56:57 09/08/2005
	MTL: -	BY: ENJOEPO

BALDOR ELECTRIC Co.

TYPE C, DV, REV, THERMAL, TERMINAL PLATE

CD0381